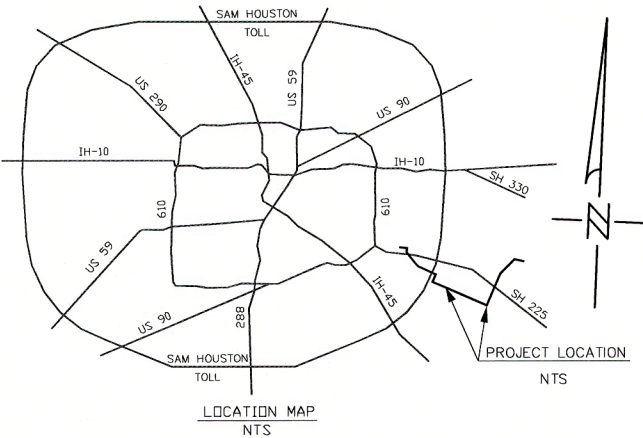
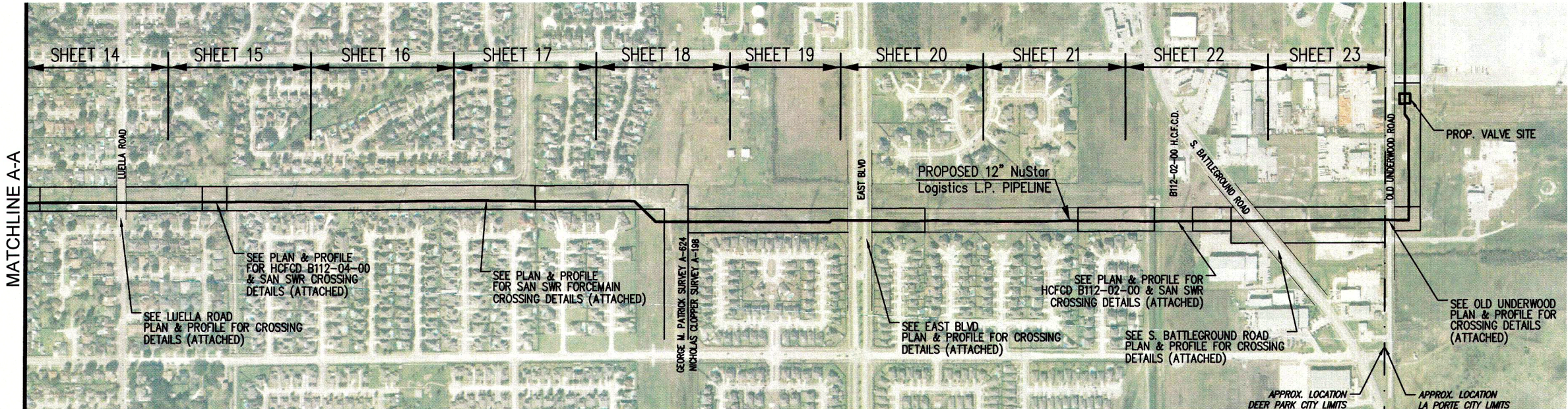
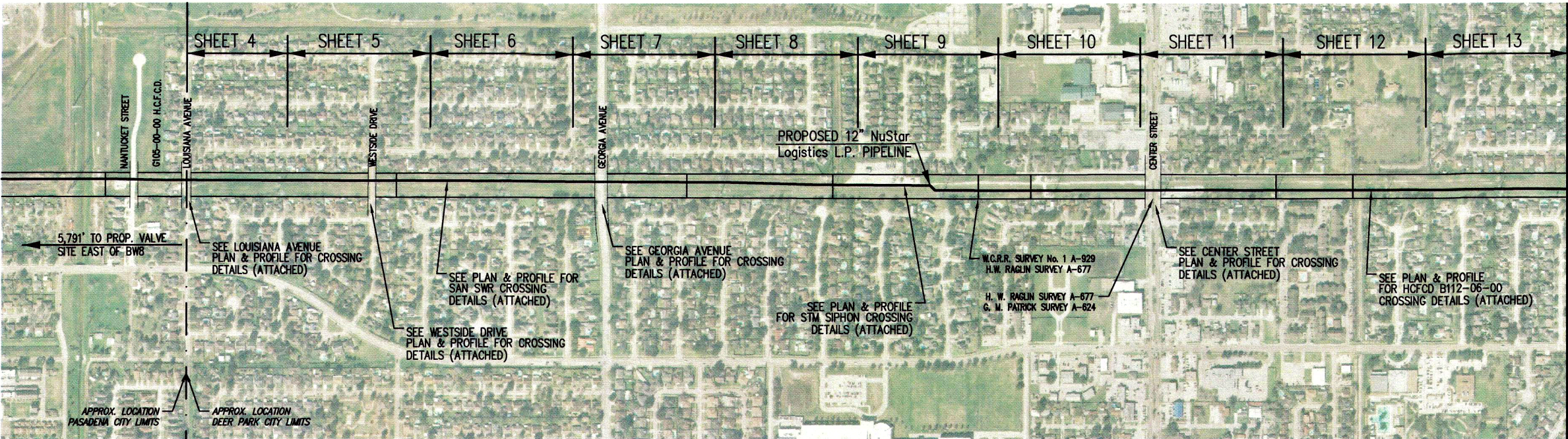


\\dc1\Projects\CV051\DWG\Survey\CNP\Permit Exhibits\CV051 - 02-CITY OF DEER PARK\CV051 - 03 COVER SHEET - ARIEL.dwg, COVER SHEET 01, 04/10/14 2:28.19PM



ABBREVIATIONS

P.O.C.	= POINT OF COMMENCEMENT
R.O.W.	= RIGHT OF WAY
TYP.	= TYPICAL
ST.	= STREET
RD	= ROAD
HWY	= HIGHWAY

PROPOSED 12" NuStar Logistics L.P.
PIPELINE CROSSING

THE CITY OF
DEER PARK

HARRIS COUNTY, TEXAS

© Copyright 2014 Weisser Engineering Company, Inc.

DRAWN BY: W.E.C. CALC'D. BY: J.G. SCALE: 1" = 800'

CHECKED BY: J.M./K.J. SHEET 3 OF 23

CREW CHIEF: DATE: 04/08/2014 JOB No.: CV051

"EXHIBIT"

1. BEARING AND GRID COORDINATES ARE BASED ON THE STATE PLANE COORDINATE SYSTEM, TEXAS SOUTH CENTRAL ZONE 4204, NAD83 (2011 adj.) WITH A COMBINED SCALE FACTOR = 0.999885809. ALL DISTANCES ARE SURFACE DISTANCES.
2. SEE ACCOMPANYING LEGAL DESCRIPTION OF HEREIN DESCRIBED CENTERLINE.

 **WEISSER**
Engineering &
Surveying Co.
19500 Park Row, Suite 100
Houston, Texas 77084
(281) 579 - 7300
T.B.P.E.R. #F-68 T.B.P.L.S. #100518-00

 **NuStar**