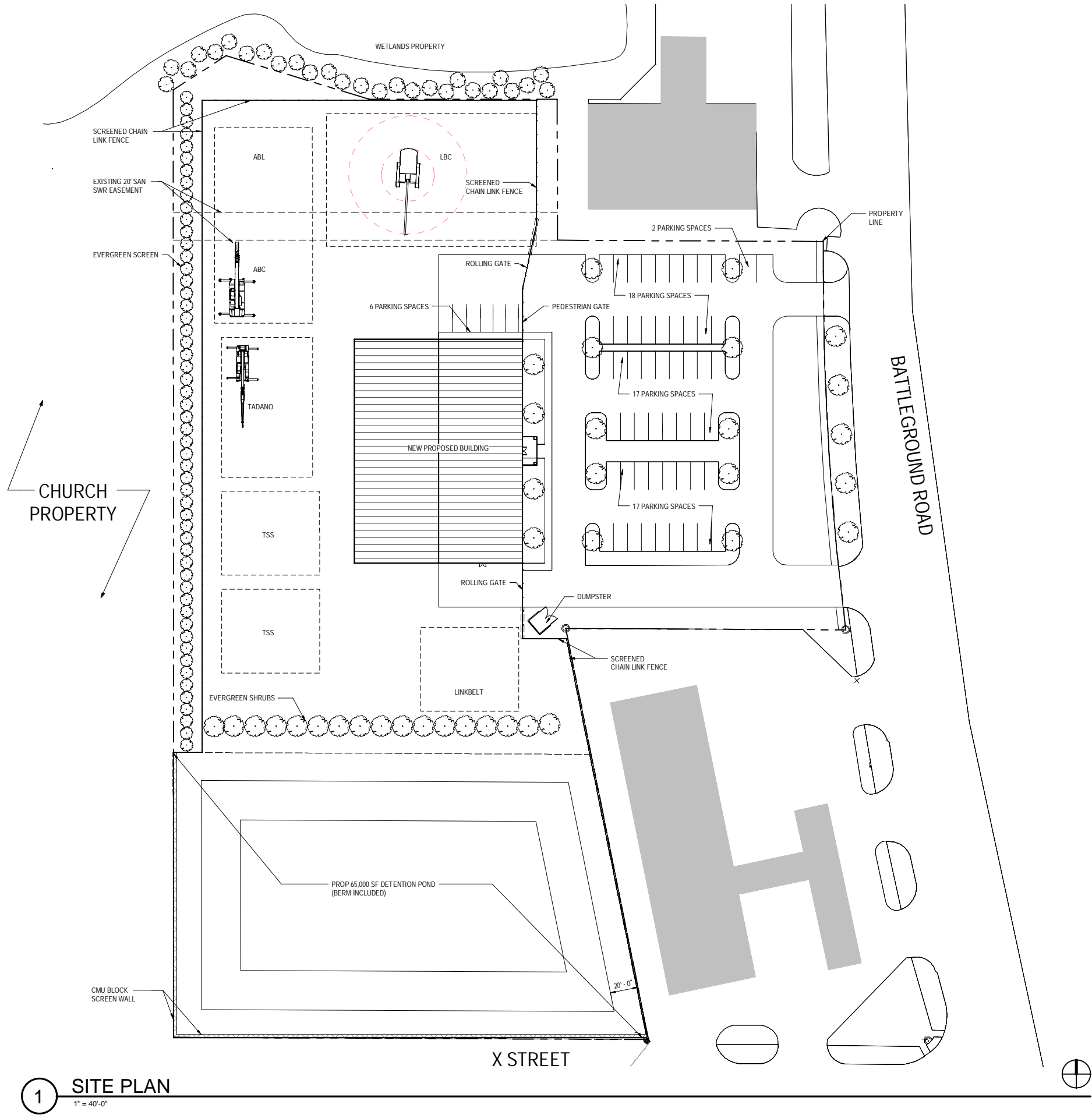


5/28/2023 7:17:11
Autodesk Docs://CICB - Crane School SD/CICB-CRANE SCHOOL_SD_R22_Arch.rvt

REV	DESCRIPTION	DATE
<div><div>H2B</div><div><div>H2B, INC.</div><div>TEXAS ENGINEERING FIRM REG. NO. 8856</div><div>TEXAS ARCHITECTURE FIRM REG. NO. BR 3384</div><div>1225 N LOOP W, SUITE 800</div><div>HOUSTON, TX 77008</div><div>713.864.2900</div></div></div>		
CICB CRANE SCHOOL 0 WALLISVILLE ROAD HOUSTON, TEXAS 77013		
AERIAL VIEW		
<div><div>H2B PROJECT No.:</div><div>DESIGNED BY :</div><div>DRAWN BY :</div><div>SCALE:</div></div>		<div><div>23-047</div><div>TBH</div><div>KMS</div><div>AS SHOWN</div></div> <div>A-100</div>

PLOTTED ON: 5/30/2023 3:03:27
 FILE NAME: C:\Users\Arch\Desktop\SD\ICB-Crane School\SD_R22_Arch.mxd



1 SITE PLAN
 1" = 40'-0"

REV	DESCRIPTION	DATE
<div> <div> </div> <div> H2B, INC. TEXAS FIRM REGISTRATION NO. 8856 1225 N LOOP W, SUITE 800 HOUSTON, TX 77008 713.864.2900 </div> </div>		
CICB CRANE SCHOOL 0 WALLISVILLE ROAD HOUSTON, TEXAS 77013		
SITE PLAN		
THIS DOCUMENT IS RELEASED FOR INTERIM REVIEW AND NOT INTENDED FOR CONSTRUCTION, BIDDING, OR PERMIT PURPOSES. TRAVIS B. HICKS, AIA TX LICENSE No. 25583		
H2B PROJECT No.: DESIGNED BY : DRAWN BY : SCALE:	23-047 TBH TBH AS SHOWN	A-101

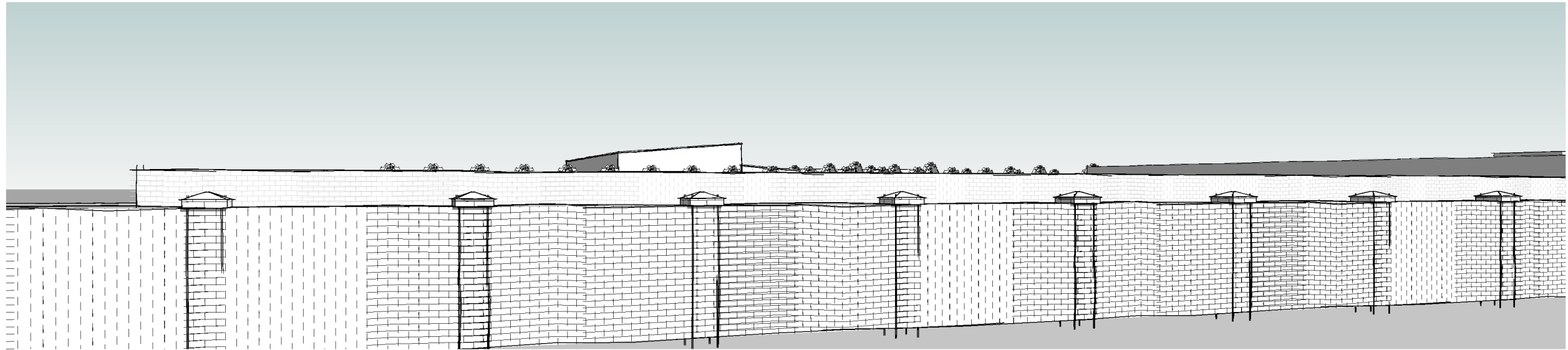
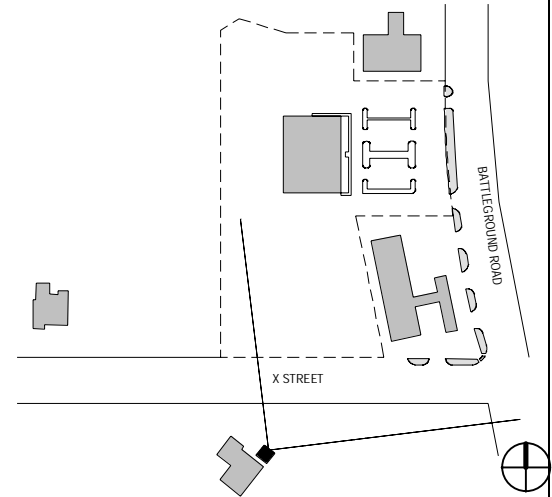


VIEW OF PROPOSED BUILDING
ELEVATION

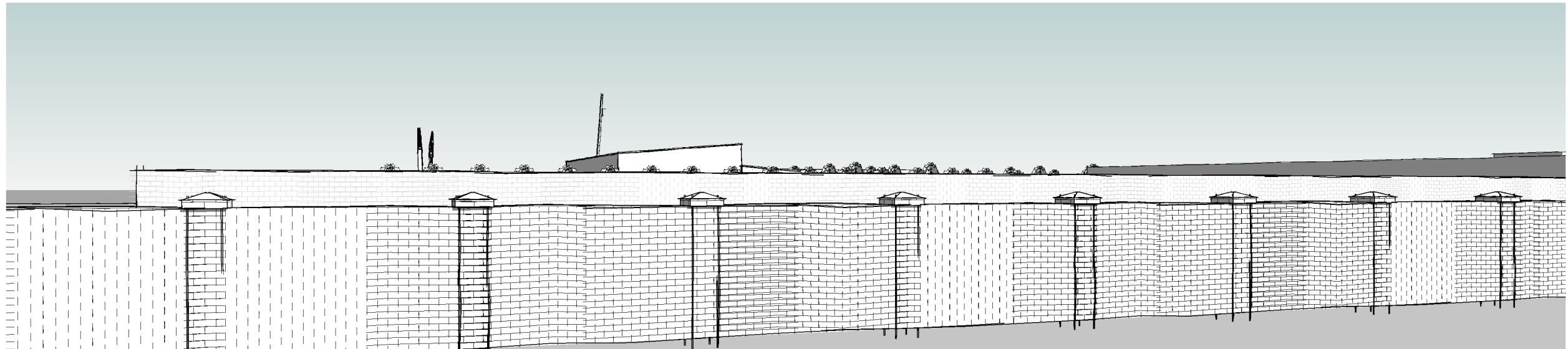
1

PLOTTED ON: 5/28/2023 7:17:20
FILE NAME: Autodesks Docs/CICB - Crane School SD/CICB-CRANE SCHOOL_SD_R22_Arch.rvt

REV	DESCRIPTION	DATE
<div><div><div>H2B</div><div><div>H2B, INC.</div><div>TEXAS ENGINEERING FIRM REG. NO. 8856</div><div>TEXAS ARCHITECTURE FIRM REG. NO. BR 3384</div><div>1225 N LOOP W, SUITE 800</div><div>HOUSTON, TX 77008</div><div>713.864.2900</div></div></div></div>		
<div>CICB CRANE SCHOOL</div> <div>0 WALLISVILLE ROAD</div> <div>HOUSTON, TEXAS 77013</div>		
BUILDING ELEVATION		
<div>H2B PROJECT No.: 23-047</div> <div>DESIGNED BY: TBH</div> <div>DRAWN BY: KMS</div> <div>SCALE: AS SHOWN</div>		A-102

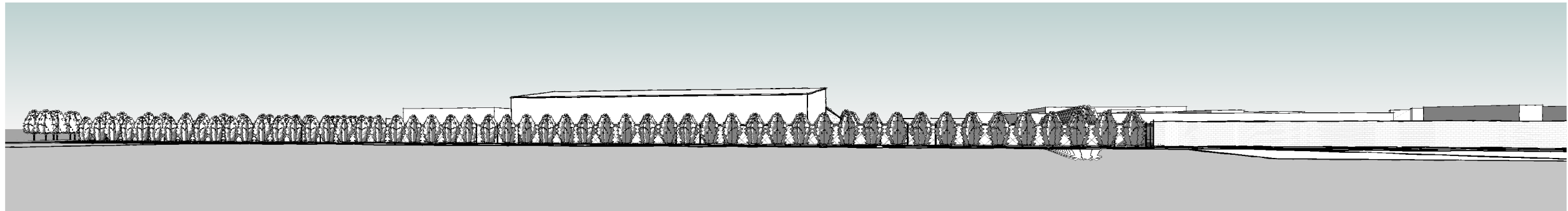
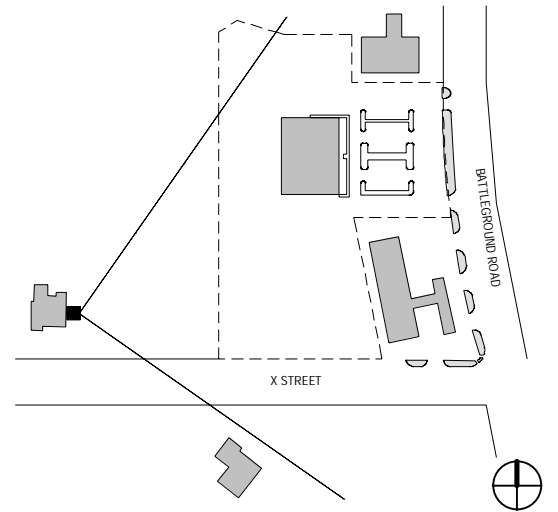


VIEW FROM RESIDENT'S BACKYARD
(WITH BOOM DOWN)

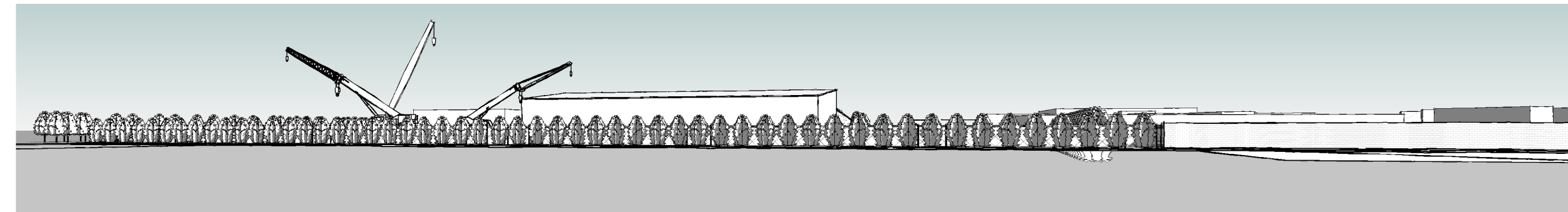


VIEW FROM RESIDENT'S BACKYARD

REV	DESCRIPTION	DATE
<div><div><div>H2B</div><div><div>H2B, INC.</div><div>TEXAS ENGINEERING FIRM REG. NO. 8856</div><div>TEXAS ARCHITECTURE FIRM REG. NO. BR 3384</div><div>1225 N LOOP W, SUITE 800</div><div>HOUSTON, TX 77008</div><div>713.864.2900</div></div></div><div>CICB CRANE SCHOOL</div><div>0 WALLISVILLE ROAD</div><div>HOUSTON, TEXAS 77013</div><div>SITE VIEW</div></div>		
<div><div><div>H2B PROJECT No.: 23-047</div><div>DESIGNED BY: TBH</div><div>DRAWN BY: KMS</div><div>SCALE: AS SHOWN</div></div><div>A-103</div></div>		

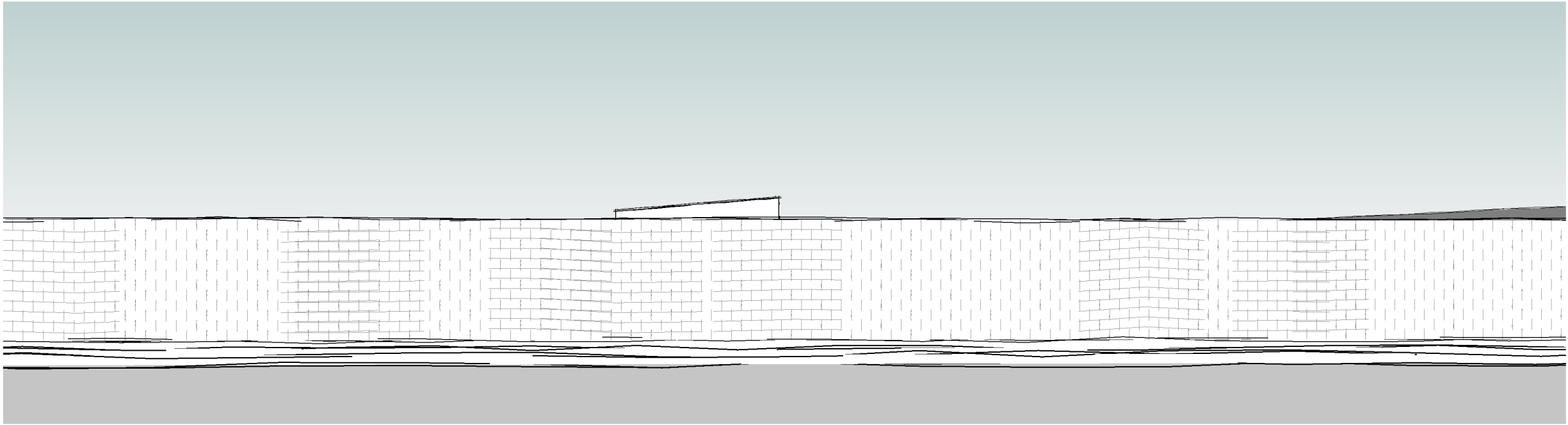


2 VIEW FROM RESIDENT ADJACENT TO SITE (WITH BOOM DOWN)



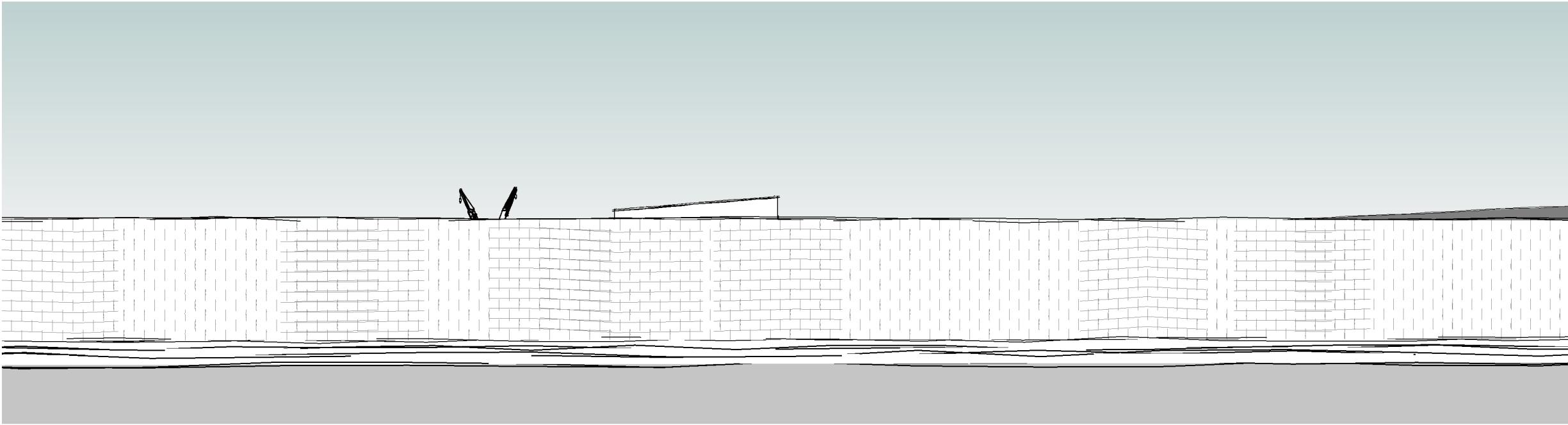
1 VIEW FROM RESIDENT ADJACENT TO SITE

REV	DESCRIPTION	DATE
<div><div><div>H2B</div><div>H2B, INC. TEXAS ENGINEERING FIRM REG. NO. 8856 TEXAS ARCHITECTURE FIRM REG. NO. BR 3384 1225 N LOOP W, SUITE 800 HOUSTON, TX 77008 713.864.2900</div></div><div>CICB CRANE SCHOOL 0 WALLISVILLE ROAD HOUSTON, TEXAS 77013</div><div>SITE VIEW</div></div>		
<div><div><div>H2B PROJECT No.: DESIGNED BY : DRAWN BY : SCALE:</div><div>23-047 Designer Author AS SHOWN</div></div><div>A-104</div></div>		



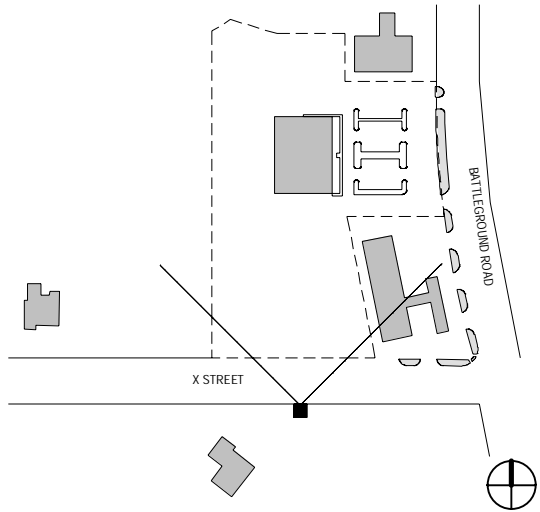
VIEW FROM SIDE WALK OFF OF X
STREET (WITH BOOM DOWN)

2



VIEW FROM SIDE WALK OFF OF
X STREET

1



REV	DESCRIPTION	DATE
<div><div><div>H2B</div><div><div>H2B, INC.</div><div>TEXAS ENGINEERING FIRM REG. NO. 8856</div><div>TEXAS ARCHITECTURE FIRM REG. NO. BR 3384</div><div>1225 N LOOP W, SUITE 800</div><div>HOUSTON, TX 77008</div><div>713.864.2900</div></div></div><div><div>CICB CRANE SCHOOL</div><div>0 WALLISVILLE ROAD</div><div>HOUSTON, TEXAS 77013</div></div><div>SITE VIEW</div></div>		
<div><div><div>H2B PROJECT No.: 23-047</div><div>DESIGNED BY : Designer</div><div>DRAWN BY : Author</div><div>SCALE: AS SHOWN</div></div><div>A-105</div></div>		