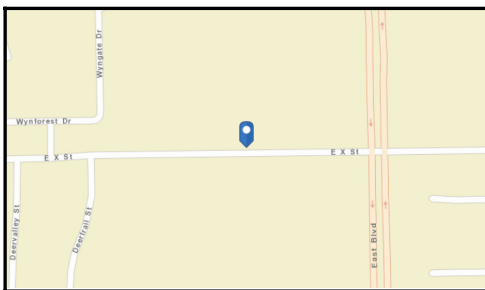
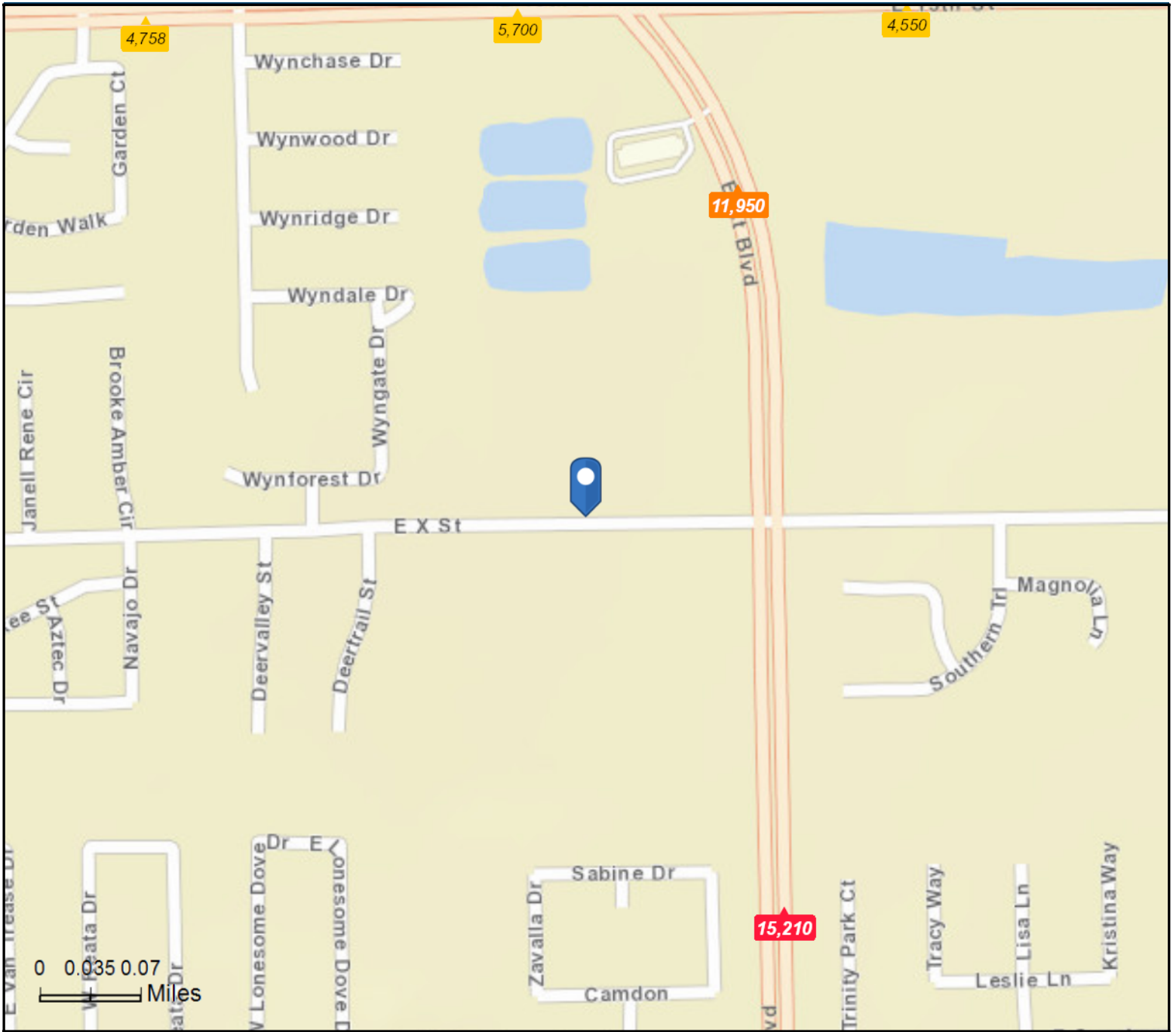


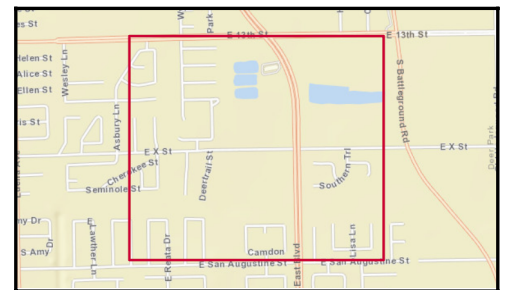
- Average Daily Traffic Volume**
- ▲ Up to 6,000 vehicles per day
 - ▲ 6,001 - 15,000
 - ▲ 15,001 - 30,000
 - ▲ 30,001 - 50,000
 - ▲ 50,001 - 100,000
 - ▲ More than 100,000 per day



Source: ©2019 Kalibrate Technologies (Q3 2019).



- Average Daily Traffic Volume**
- ▲ Up to 6,000 vehicles per day
 - ▲ 6,001 - 15,000
 - ▲ 15,001 - 30,000
 - ▲ 30,001 - 50,000
 - ▲ 50,001 - 100,000
 - ▲ More than 100,000 per day



Source: ©2019 Kalibrate Technologies (Q3 2019).



Traffic Count Profile

2211 E X St, Deer Park, Texas, 77536
Rings: 1 mile radii

Prepared by Esri
Latitude: 29.69523
Longitude: -95.10089

Distance:	Street:	Closest Cross-street:	Year of Count:	Count:
0.25	East Blvd	E 13th St (0.14 miles NW)	2011	11,950
0.30	East Blvd	E San Augustine St (0.09 miles S)	2009	15,210
0.35	E 13th St	East Blvd (0.08 miles E)	2011	5,700
0.37	E San Augustine St	East Blvd (0.04 miles E)	2009	4,320
0.41	E San Augustine St	Trinity Park Ct (0.02 miles W)	2009	2,150
0.41	E 13th St	Half Ct (0.08 miles E)	2011	4,550
0.44	East Blvd	E San Augustine St (0.06 miles N)	2009	14,980
0.46	E 13th St	Asbury Ln (0.04 miles W)	2009	4,758
0.59	S Battleground Rd	E 13th St (0.06 miles S)	1996	17,280
0.61	E San Augustine St	W Van Trease Dr (0.03 miles E)	2009	4,334
0.62	E 13th St	S Battleground Rd (0.07 miles W)	2011	2,360
0.65	East Blvd	State Hwy 225 (0.16 miles N)	2009	10,808
0.68	East Blvd	P Ave (0.05 miles S)	2009	12,531
0.69	E X St	Karankawas Ct (0.07 miles E)	2011	4,270
0.70	S Battleground Rd	State Hwy 225 (0.07 miles N)	2009	18,458
0.75	State Hwy 225	S Battleground Rd (0.07 miles E)	1996	620
0.76	la Porte Hwy	S Battleground Rd (0.13 miles E)	2011	89,000
0.77	State Hwy 225	East Blvd (0.12 miles W)	1996	2,663
0.77	E 13th St	Luella Ave (0.07 miles W)	2011	5,740
0.77	Luella Ave	S Kaufman Dr (0.04 miles N)	2009	6,030
0.78	Old Underwood Rd	E X St (0.18000001 miles S)	2011	1,940
0.80	E X St	Luella Ave (0.04 miles E)	2011	4,220
0.81	la Porte Hwy	East Blvd (0.13 miles W)	2013	78,567
0.82	Luella Ave	Helen Dr (0.02 miles S)	2011	4,030
0.84	Luella Ave	Frances St (0.02 miles N)	2011	3,060
0.85	Luella Ave	E San Augustine St (0.02 miles N)	2011	5,490
0.87	la Porte Hwy	Old Underwood Rd (0.12 miles SE)	2013	72,080
0.89	Old Underwood Rd	State Hwy 225 (0.03 miles N)	1996	3,760
0.93	Luella Ave	Warren St (0.02 miles S)	2009	5,444
0.93	la Porte Hwy	Old Underwood Rd (0.01 miles W)	1996	2,150

Data Note:The Traffic Profile displays up to 30 of the closest available traffic counts within the largest radius around your site. The years of the counts in the database range from 2019 to 1963. Over 25% of the counts were taken between 2010 and 2019 and over 77% of the counts were taken between 2000 and 2019. Traffic counts are identified by the street on which they were recorded, along with the distance and direction to the closest cross-street. Distances displayed as 0.00 miles (due to rounding), are closest to the site. A traffic count is defined as the two-way Average Daily Traffic (ADT) that passes that location.

Source: ©2019 Kalibrate Technologies (Q3 2019).