

MOVING TOWARD A....



GREENER, HEALTHIER, AND HAPPIER CITY

DEER PARK

Comprehensive Master Plan for Park, Recreation, and Open Space: 2024 - 2034



PRESENTATION OUTLINE

1. ACKNOWLEDGMENTS

2. PROJECT PROCESS AND SCHEDULE

3. THEORETICAL FOUNDATION AND GUIDING DESIGN PRINCIPLES

4. KEY ISSUES, MISSION, CORE VALUES, AND GOALS

5. MASTER PLAN FRAMEWORK

6. RECOMMENDED IMPROVEMENT AND RENOVATION FOR EXISTING PARKS AND RECREATION FACILITIES

7. SITE DESIGNS FOR TARGET PARK SITES



ACKNOWLEDGMENTS

MAJOR AND CITY COUNCIL

Jerry Mounton Jr., Mayor
Sherry Garrison, Council Position 1
TJ Haight, Council Position 2
Tommy Ginn, Council Position 3
Bill Patterson, Council Position 4
Ron Martin, Council Position 5
Georgette Ford, Council Position 6

PARKS AND RECREATION DEPARTMENT

Charlie Sandberg, Director of Parks and Recreation
Jacob Zuniga, Assistant Director of Parks and Recreation
Nicole Garvis, Marketing and Technical Coordinator
Debra Culp, Athletics and Aquatics Supervisor

PROJECT COORDINATORS: TEXAS TARGET COMMUNITIES

Jaimie Hicks Masterson, Director of Texas Target Communities
Jeewasmi Thapa, Senior Program Coordinator

TEXAS A&M UNIVERSITY

PARTICIPATING CLASSES AND STUDENTS: MASTER OF LANDSCAPE ARCHITECTURE STUDENTS

LAND 693: Grace Canady, Class of 2024
LAND 621: Urvi Joshi, Na Wang, Kalya Komo, and Wafa Bassiouni

BACHELOR OF LANDSCAPE ARCHITECTURE STUDENTS

LAND 311: Sydney Puentes, Lauren Kasel, Oscar Trevino, Kayla Bennett, Riley Simmons, Juliana Carillo, Mace Bristow, Blake Alexander, Cole Bishop, Brian Schoppe, Jose Zapata, Christina Camarillo, Ashley Dinhobl, Amh Pham, Quade Clark, David Holmes, Kenneth Alexander, Leo LeFebre, Lindsey Tobin, Danielle Ren, Katie Ashmore, Kara Wilson, Cassidy Summers, Emma Owens, Shelby Morris, Sydney Reeves

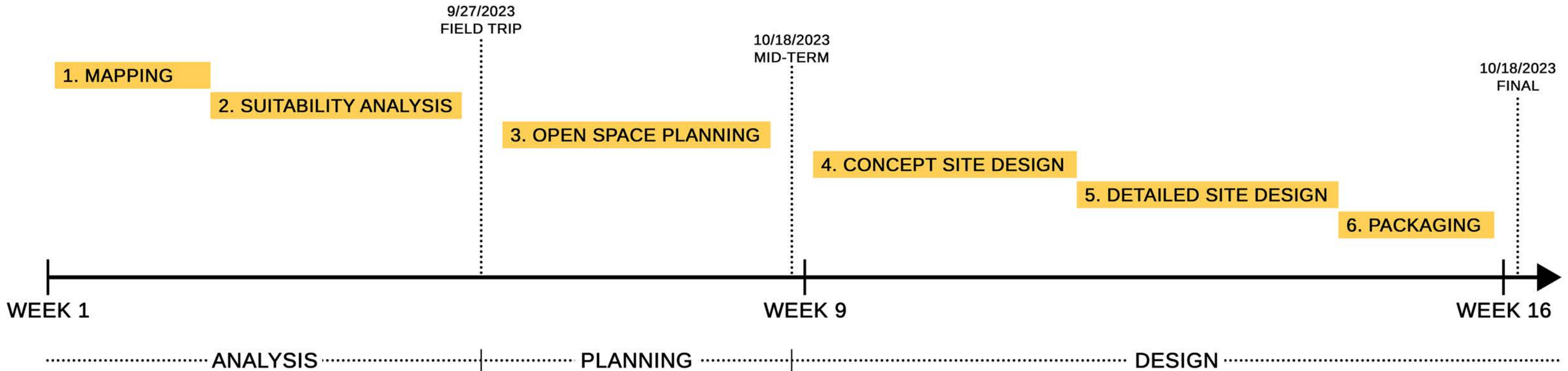
FACULTY ADVISORY TEAM

Dr. Chang-Shan Huang, Project Director/Committee Chair
Dr. Dongying Li, Instructor of LAND 311/Committee Member
Dr. Boqian Xu, Instructor of LAND 621/311
Dr. Scott Shafer, Department of Parks, Recreation and Tourism/Committee Member
Dr. Michael Arnold, Department of Horticulture/Committee Member

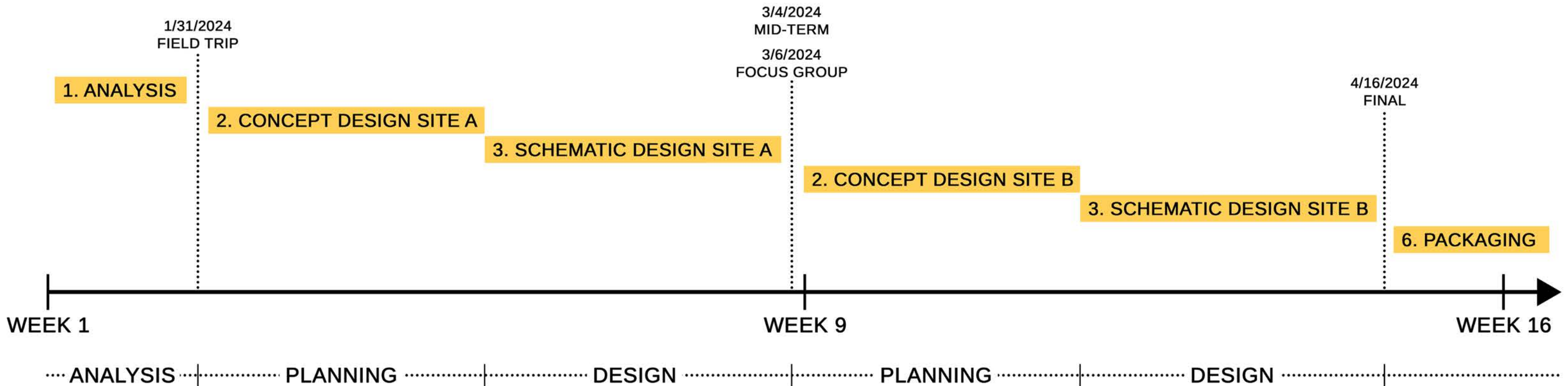


PROJECT PROCESS AND SCHEDULE

FALL 2023 - LAND 311



SPRING 2024 - LAND 621



OUTLINE FOR THE FINAL MASTER PLAN REPORT

Section/Chapter No.	Title/topic	Key Points of Content
Executive Summary		
Introduction		
		Summary of achievements since last master plan (2013-23)
		Major changes, opportunities and challenges of Deer Park
		Scope, focus and approach of this master plan
		Planning process and community engagement
Chapter 1	Community Profile of Deer Park	
		Location and Regional Context of Deer Park
		History of Deer Park
		Demographic and economic profile
		Physical environment profile
		Community infrastructures and facilities
		Summary: Overall Community character
Chapter 2	Inventory and Evaluation of Existing Park & Recreation Facilities in Deer Park	
		Inventory of existing park and recreation facilities
		Level of service
		Natural resources and open spaces
		Historical and cultural resources
		Summary: Key issues/problems to be addressed
Chapter 3	Community Park and Recreation Needs Assessment	
		Community Engagement Workshops
		Mail-out Questionnaire Survey
		Survey result analysis – major findings
		Summary: Major Community Needs
Chapter 4	Value, Vision, Mission, Goals, Objectives, and Guiding Principles for the Master Plan	
		Core value
		Vision and mission statements
		Goals and Objectives

Section/Chapter No.	Title/topic	Key Points of Content
		Guiding Principles
Chapter 5	City-wide Parks, Recreation and Open Space System Framework	
		Concept for City-wide Parks, Recreation and Open Space System Framework
		Recommendations for Improvement
		<ul style="list-style-type: none"> Connectivity/accessibility: Trail, walkway, bikeway system
		<ul style="list-style-type: none"> Wayfinding and Signage system
		<ul style="list-style-type: none"> Themed districts/neighborhoods with major nodes and landmarks
		<ul style="list-style-type: none"> Community Identity/legibility
		<ul style="list-style-type: none"> Gateway corridors: Center Street and Augustin Street
Chapter 6	Recommendations for Individual Park Improvements	
		Classification of Individual Park Improvements and Priority List
		List of suggested new facilities and features in the existing parks
		Schematic designs for prioritized individual parks
Chapter 7	Implementation Strategies	
		<ul style="list-style-type: none"> Priority /phasing Strategies
		<ul style="list-style-type: none"> Funding Strategies
		<ul style="list-style-type: none"> Community Engagement and Participation
		<ul style="list-style-type: none"> Marketing and Promotion

THEORETICAL FOUNDATION AND GUIDING DESIGN PRINCIPLES - HOLISTIC DESIGN

HOLISTIC DESIGN APPROACH

The relationship between humans and nature was once thought to be independent of each other but with research development and implementation it is understood, the relationship is deeply interdependent. The interaction humans have with nature, parks, or natural environments, plays an essential role in humans' overall health and well-being.

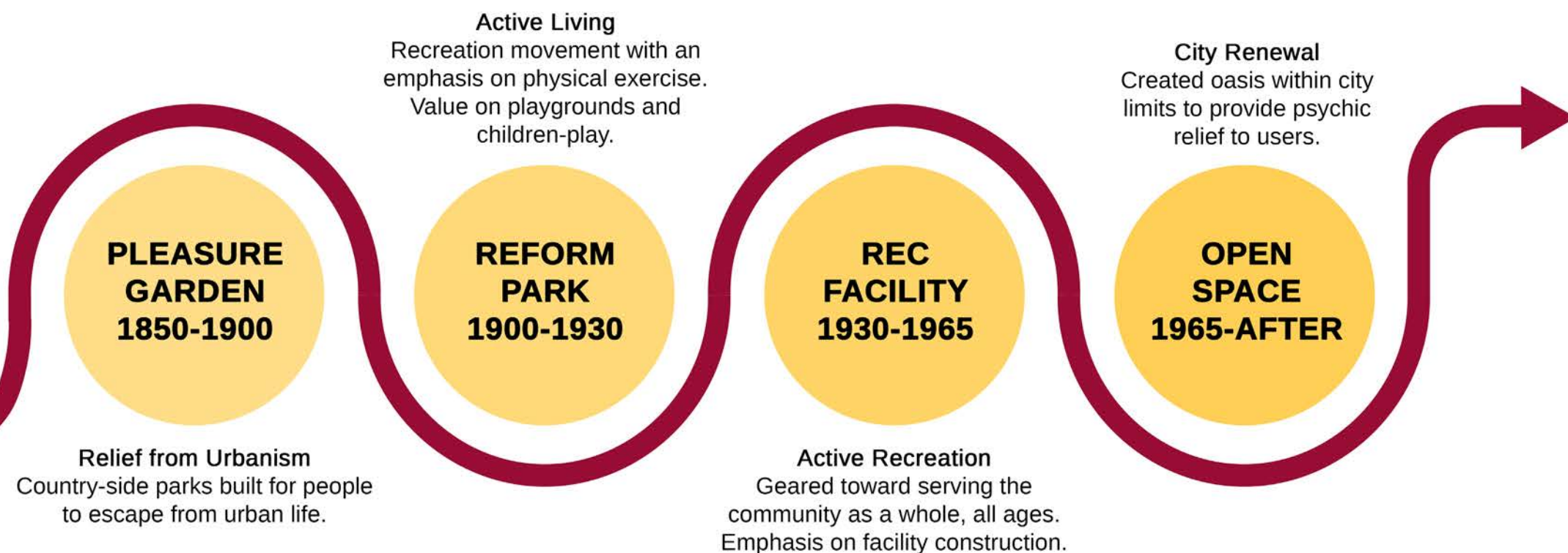
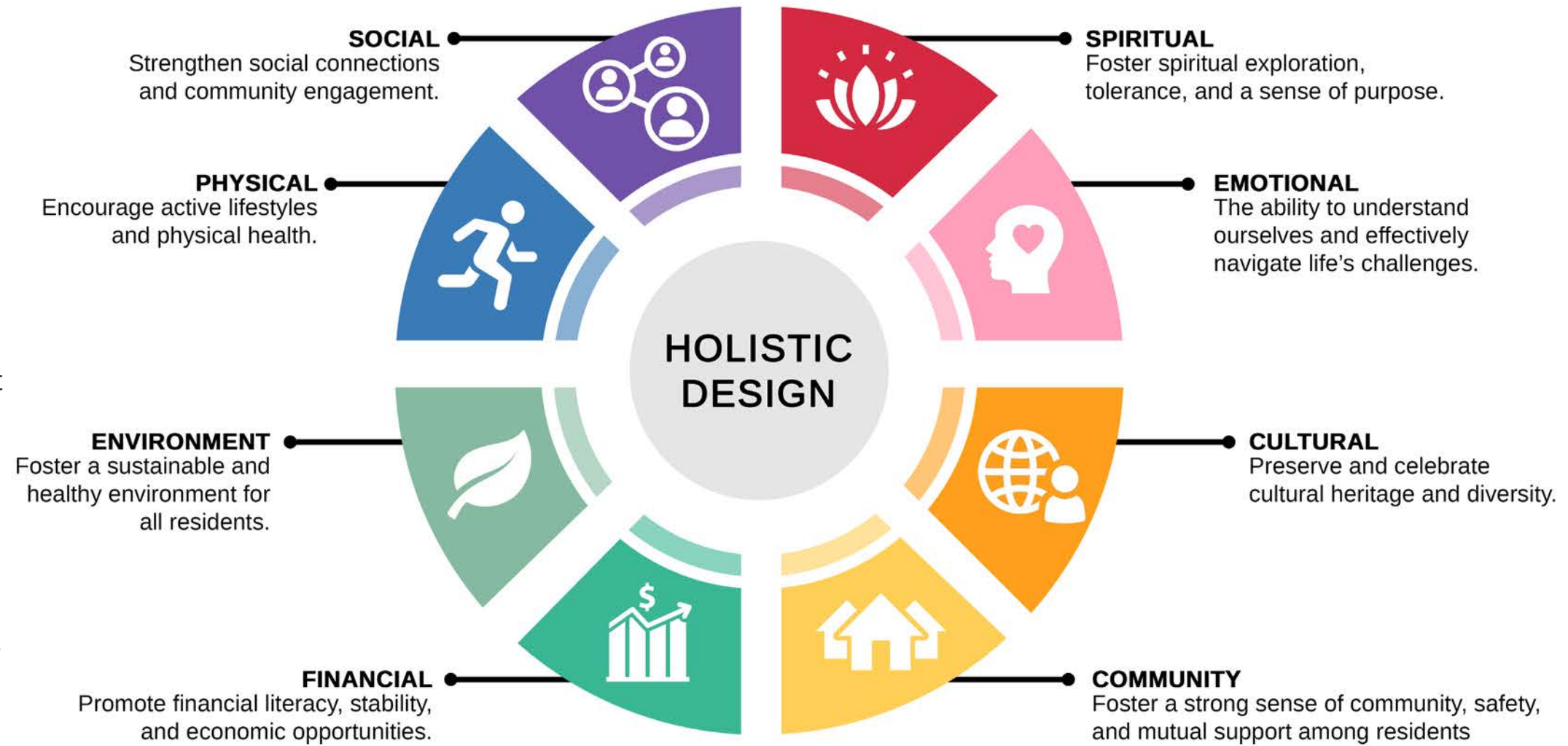
When there is a large emphasis on park systems in cities, their main goal is to make sources of nature more readily available to the public because nature is a vital component to human overall health. Parks are an essential part of a city's infrastructure because of their ability to provide nature access and provide health benefits. Due to parks varying in size, shape, and character, parks can provide a spectrum of opportunities for the public based on their natural environment levels. Opportunities that can be seen through evidence-based research are improved physiological, psychological, social, and overall well-being.

Parks can be sourced as a holistic health engagement process due to their overall benefits to humans' health.

EVOLUTION OF URBAN PARKS IN USA

Galen Cranz asserts that parks are vital to cities, serving as essential communal spaces for recreation, relaxation, and community interaction. The book traces the evolution of parks from picturesque landscapes in the 19th century to more functional, multipurpose spaces in the 20th and 21st centuries, reflecting changing societal values and urban development trends. Despite these shifts, parks continue to be crucial components of urban planning, contributing to the health, well-being, and vitality of communities.

1982. "The Role of Parks in the City", The Politics of Park Design: A History of Urban Parks in America, Galen Cranz



THEORETICAL FOUNDATION AND GUIDING DESIGN PRINCIPLES - INTERGENERATIONAL DESIGN

INTERGENERATIONAL DESIGN APPROACH

Intergenerational design is a design approach that emphasizes engagement between generations of people. The design approach first gained popularity in the 1990's with its idea of meeting the needs of both the youth and elderly in public environments.

The design method focuses on the creation of green spaces that respond to age-based needs, enhance livability, enable generations to meet, interact, and under each other through shared space. Interactions between generations can lead to individual health benefits, social inclusions, and overall community benefits.

CHILDREN AND TEEN BENEFITS

- 1 Improved academic achievement through senior mentoring.
- 2 Feeling loved and enjoying dedicated attention.
- 3 Gaining confidence through non-judgemental companionship.
- 4 Emotional Bonding
- 5 Exposed to knowledge and demeanor of older adults.

<https://www.civicplus.com/blog/pr/six-benefits-of-intergenerational-parks-and-rec-activities/>

SENIOR BENEFITS

- 1 Improved Communication
- 2 Enhanced Self-Esteem
- 3 Better Decision-Making Skills
- 4 Improved Memory
- 5 Feeling Appreciated and Valued
- 6 Assisting the next generation and making a difference in a future society.

<https://www.civicplus.com/blog/pr/six-benefits-of-intergenerational-parks-and-rec-activities/>



INTERGENERATIONAL DESIGN OBJECTIVES



ENTICE ALL AGES

Attract and encourage all ages to use parks in their community.

Determine the main attractors to parks for an array of visitors (ages and ability levels).



ENABLE PHYSICAL ACTIVITY

Encourage all park users to be active.

Identify the physical or natural elements, as well as park characteristics that afford physical activity.



ENGAGE PEOPLE SOCIALLY

Afford activities that encourage park visitors to socially connect with others.

Facilitate intergenerational park use, rather than silos of intergenerational spaces, identifying opportunities for multi-generational or joint participation.

https://eprints.qut.edu.au/235562/1/intergenerational_parks_design_guide_2022_reduced.pdfincididunt

KEY ISSUES, MISSION, CORE VALUES, AND GOALS

KEY ISSUES

1. CONNECTIVITY CHALLENGES

- Limited Sidewalk and Bike Lanes
- Accessibility Issues
- ADA Standard

2. VARIETY AND QUALITY OF EXISTING PARK AND RECREATION FACILITIES

- Insufficient Infrastructure
- Lack of Diverse Recreation Opportunities within City Parks for Special Needs of Each Group.
- Lack of Focus on Cultural and Historical Experiences.
- Shade Insufficiency

3. INCLUSIVITY AND EQUITY

- Lack of Park Facilities in the Underserved Neighborhoods.
- Lack of use of the Golf Course.

4. COMMUNITY IDENTITY

- Lack of Visual Identity
- Lack of Wayfinding Signage System
- Lack of Beautification Efforts

5. SUSTAINABILITY CONCERNS

- Air Pollution
- Noise Pollution
- Visual Impact
- Flood Risk Zones
- Natural Disasters
- Urban Heat Index

6. LAND AVAILABILITY

- Limited Available Land for Existing Park
- Expansion or Adding New Parks because of Landlocked Conditions.
- Financial Constraints

MISSION STATEMENT

The Mission of the City of Deer Park is to deliver exemplary municipal services that provide a high quality of life consistent with our history, culture, and unique sense of community.

DEER PARK CORE VALUES



COMMUNITY

We embrace the uniqueness of the City of Deer Park and incorporate that in advancing the health and well-being of our customers and residents through parks and recreation opportunities.



EQUITY AND INCLUSION

We endeavor to increase accessibility and inclusivity of parks, facilities, programs, and services for all citizens.



HEALTHY LIFESTYLE

We inspire our citizens to pursue healthier lifestyles, which will create a more livable community.



SAFETY

We strive to provide well-maintained and safe parks and facilities to all citizens.



SUSTAINABILITY

The city prioritizes sustainability through strategic urban planning, renewable energy adoption, waste reduction initiatives, and the promotion of green transportation, fostering a resilient and environmentally conscious community.

PROPOSED GOALS FOR MASTER PLAN



GOAL 1

Ensure all park systems and facilities are an essential part of the city.



GOAL 2

Revitalize Park infrastructure with unique features for each neighborhoods character.



GOAL 3

Create a vibrant cultural and arts hub within the city limits.



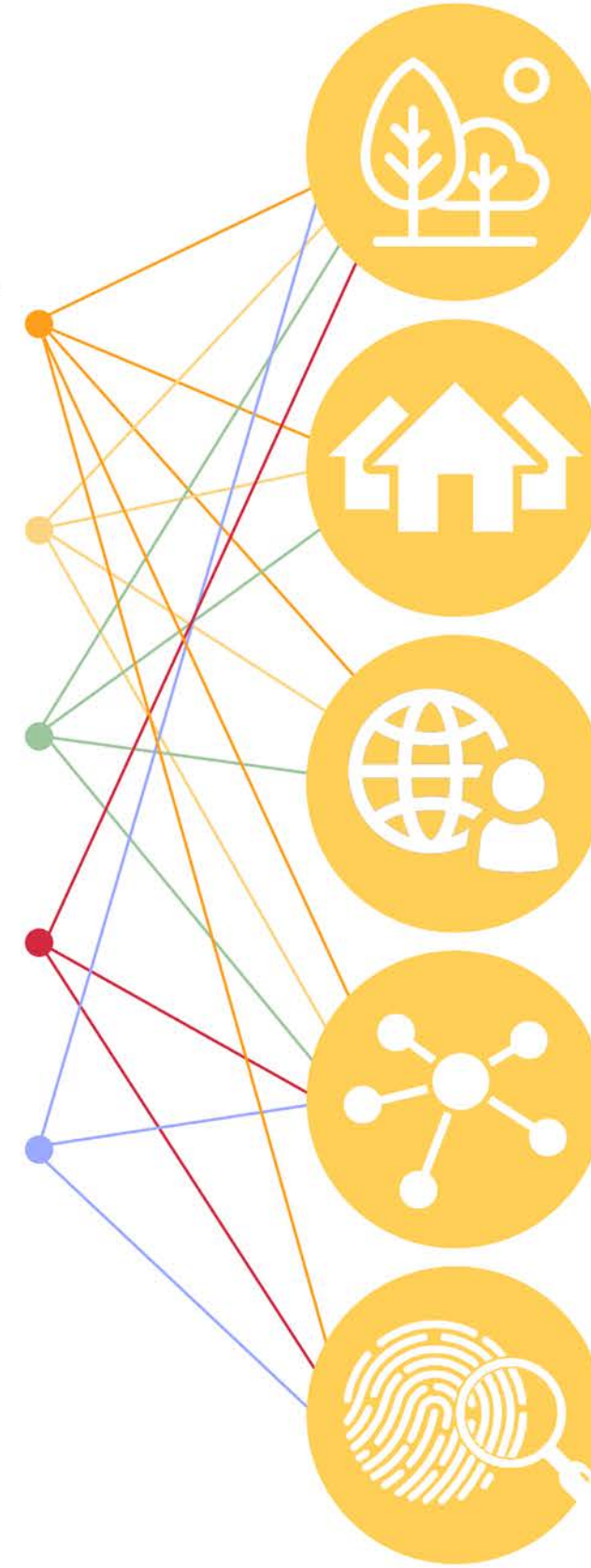
GOAL 4

Establish city wide connectivity.

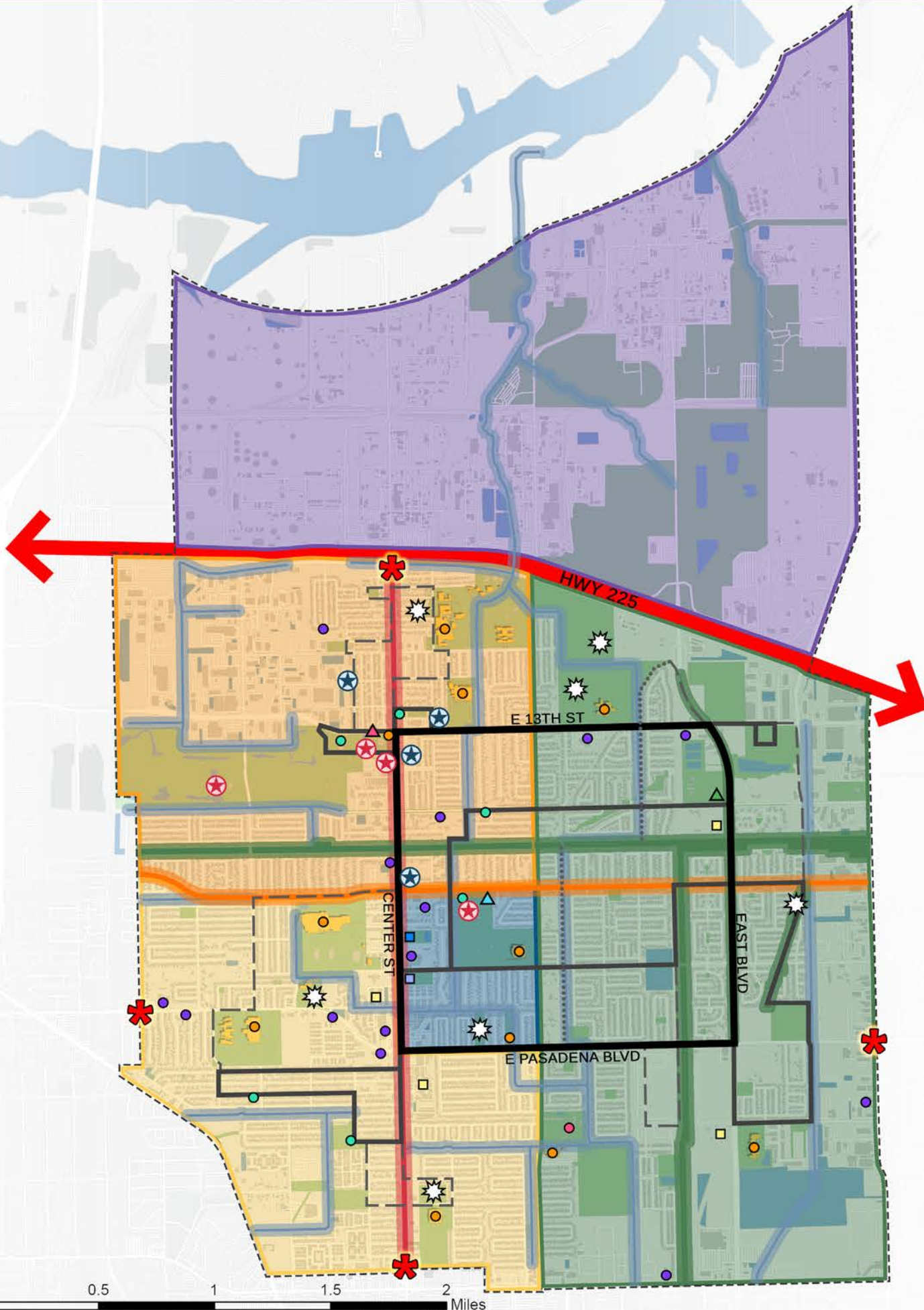


GOAL 5

Promote and enhance the unique identity of the city.



PARKS, RECREATION, AND OPEN SPACE MASTER PLAN FRAMEWORK



FRAMEWORK LEGEND

- GREEN SPACE NETWORK
 - DEER PARK ISD FOOTPRINT
 - BUILDING FOOTPRINT
 - WATER - DETENTION PONDS
 - PRINCIPAL ARTERIAL
 - DEER PARK CITY BOUNDARY
- (5) DISTRICTS**
- INDUSTRIAL DISTRICT
 - CULTURAL-ARTS DISTRICT
 - LEARNING DISTRICT
 - NATURE DISTRICT
 - CENTER DISTRICT
- (4) GATEWAY ENTRANCES**
- INDUSTRIAL DISTRICT
- (3) CORRIDORS**
- DRAINAGE CANAL CORRIDOR
 - CIVIC CORRIDOR
 - COMMERCIAL CORRIDOR
 - GREEN OPEN SPACE CORRIDOR
- (2) COMMUNITY HUBS**
- CULTURAL-ARTS HUB
CIVIC AND COMMUNITY HUB
- DAY CARES
 - FIRE STATIONS
 - SENIOR LIVING
 - COMMUNITY CENTERS
 - CITY HALL BUILDING
 - LIBRARY
 - DEER PARK ISD SCHOOLS
 - THEATER BUILDING
 - POLICE STATION
 - TEXAS HISTORIC MARKERS
 - DEER PARK HISTORIC MARKERS
- (1) INTERCONNECTED TRAIL SYSTEM**
- PRIMARY TRAIL LOOP
 - SECONDARY TRAIL LOOP
 - TERTIARY TRAIL LOOP
 - EXISTING HIKE/BIKE TRAIL
 - PROPOSED POCKET PARK

CITY LEGIBILITY

Kevin Lynch's concept of city legibility, as presented in his influential work "The Image of the City," refers to the ease with which individuals can navigate and comprehend urban environments. Lynch argued that legible cities possess distinct landmarks, clear pathways, and recognizable nodes that contribute to a cohesive mental map for residents. This idea underscores the importance of urban design in creating cities that are not only physically navigable but also psychologically accessible, enhancing the overall quality of life for their inhabitants.

5 ELEMENTS FOR A CITY

- PATH**
- Primary Loop
 - Secondary Trail
 - Tertiary Trail
 - Drainage Corridor
 - Green Corridor
 - Civic Corridor
 - Commercial Corridor
 - Highway 225
- EDGE**
- Highway 225
 - City Boundary
 - Buffalo Bayou Canal
 - District Boundaries
 - Corridors
- LANDMARK**
- Historical Markers
 - City Hall Building
 - Fire Stations
 - School Stadium
 - Water Towers
- DISTRICT**
- Industrial District
 - Learning District
 - Nature District
 - Center District
 - Cultural-Arts District
- NODE**
- Major Intersections
 - Center Street
 - Dow Park
 - Parks and Recreation Facilities
 - Deer Park ISD Schools

GREEN SPACE NETWORK AND PRIORITY AREAS FOR NEW PARKS

GREEN SPACE CONNECTIONS

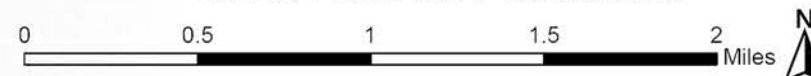
The green space network in Deer Park is thoughtfully organized into six distinct categories, encompassing city-owned land, easements, and privately owned land. Notably, a substantial portion of privately owned land is concentrated in the Industrial District, situated north of Highway 225, while the remaining five categories of open green space are located south of the highway.

Before implementing any enhancements to parks and recreational open spaces, a thorough analysis of the existing green network's interconnectivity is crucial. While the map reflects an equitable distribution of parks and recreational facilities across the city, the challenge lies in the uneven distribution of green space acreage. Addressing this issue is paramount to cultivating a more balanced and accessible green infrastructure throughout Deer Park.

A more balanced and accessible green infrastructure will not only enrich the quality of life for residents but also reinforce Deer Park's commitment to sustainable urban living. As the city continues to grow, thoughtful planning and strategic enhancements to the Green Space Network will play a pivotal role in fostering a resilient, vibrant, and interconnected community.

GREEN SPACE NETWORK LEGEND

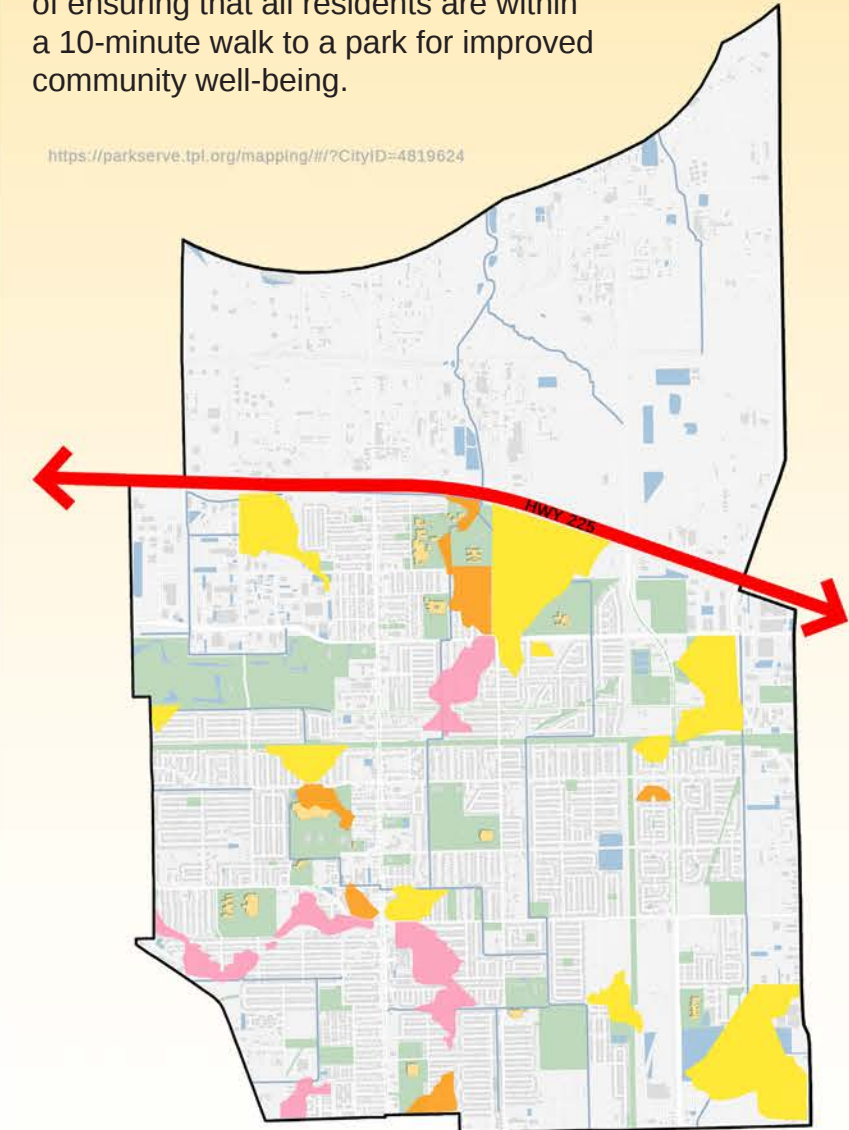
- PARKS AND RECREATION FACILITIES
- GOLF COURSE
- EASEMENTS AND OPEN SPACE
- PRIVATE OWNED GREEN SPACE
- DEER PARK CITY OWNED LAND
- DEER PARK ISD OWNED LAND
- DEER PARK ISD FOOTPRINT
- BUILDING FOOTPRINT
- WATER - DETENTION PONDS
- DRAINAGE CANALS
- PRINCIPAL ARTERIAL
- DEER PARK CITY BOUNDARY



PRIORITY AREAS FOR NEW PARKS

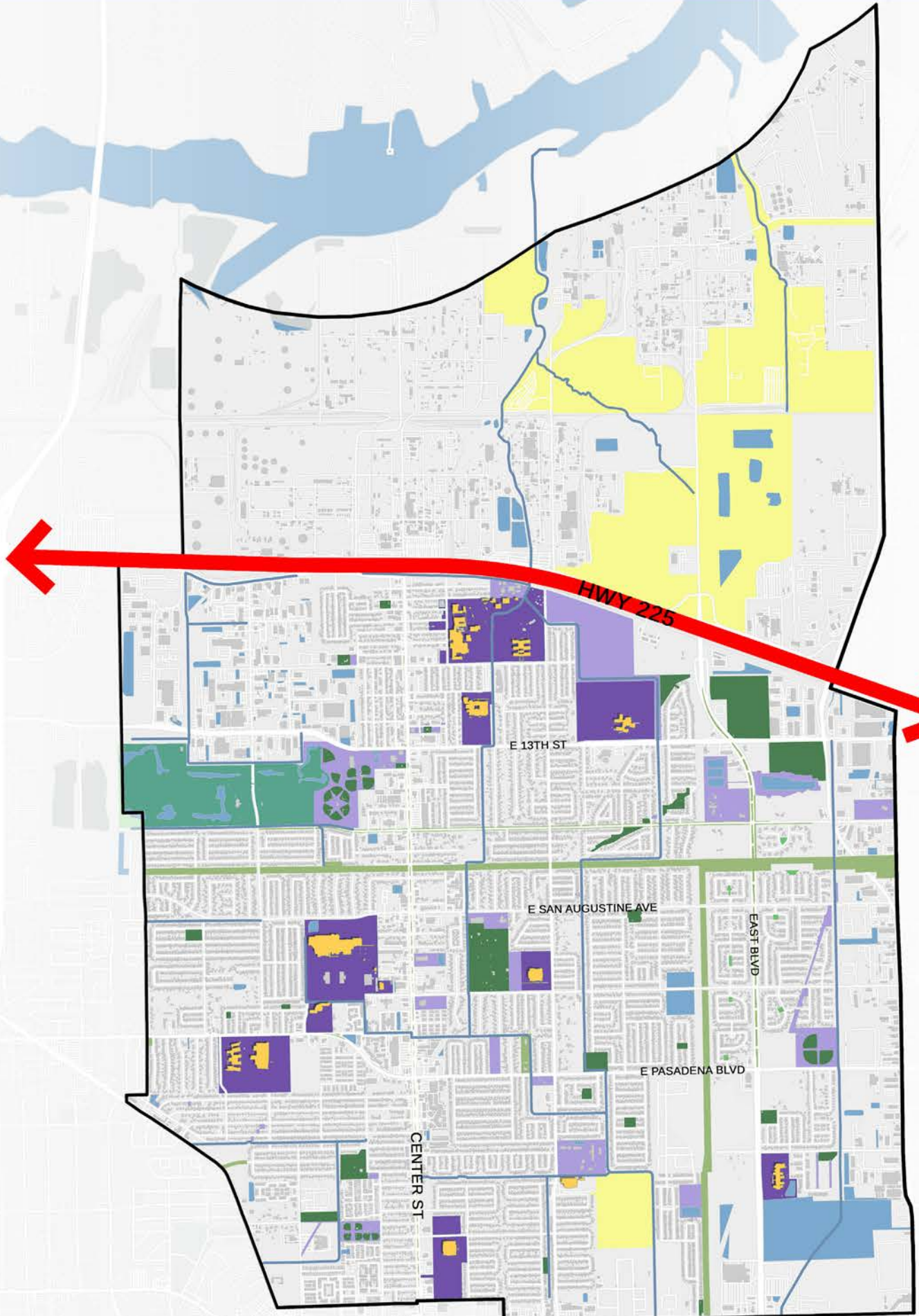
Utilizing ParkServe data for Deer Park, areas in need of a park system intervention are categorized into very high priority, high priority, and moderate priority. This classification is determined by factors such as population density, density of low-income households, density of people of color, air pollution respiratory hazard, urban heat islands, and health, emphasizing the importance of ensuring that all residents are within a 10-minute walk to a park for improved community well-being.

<https://parkservetpl.org/mapping/#/?CityID=4819624>

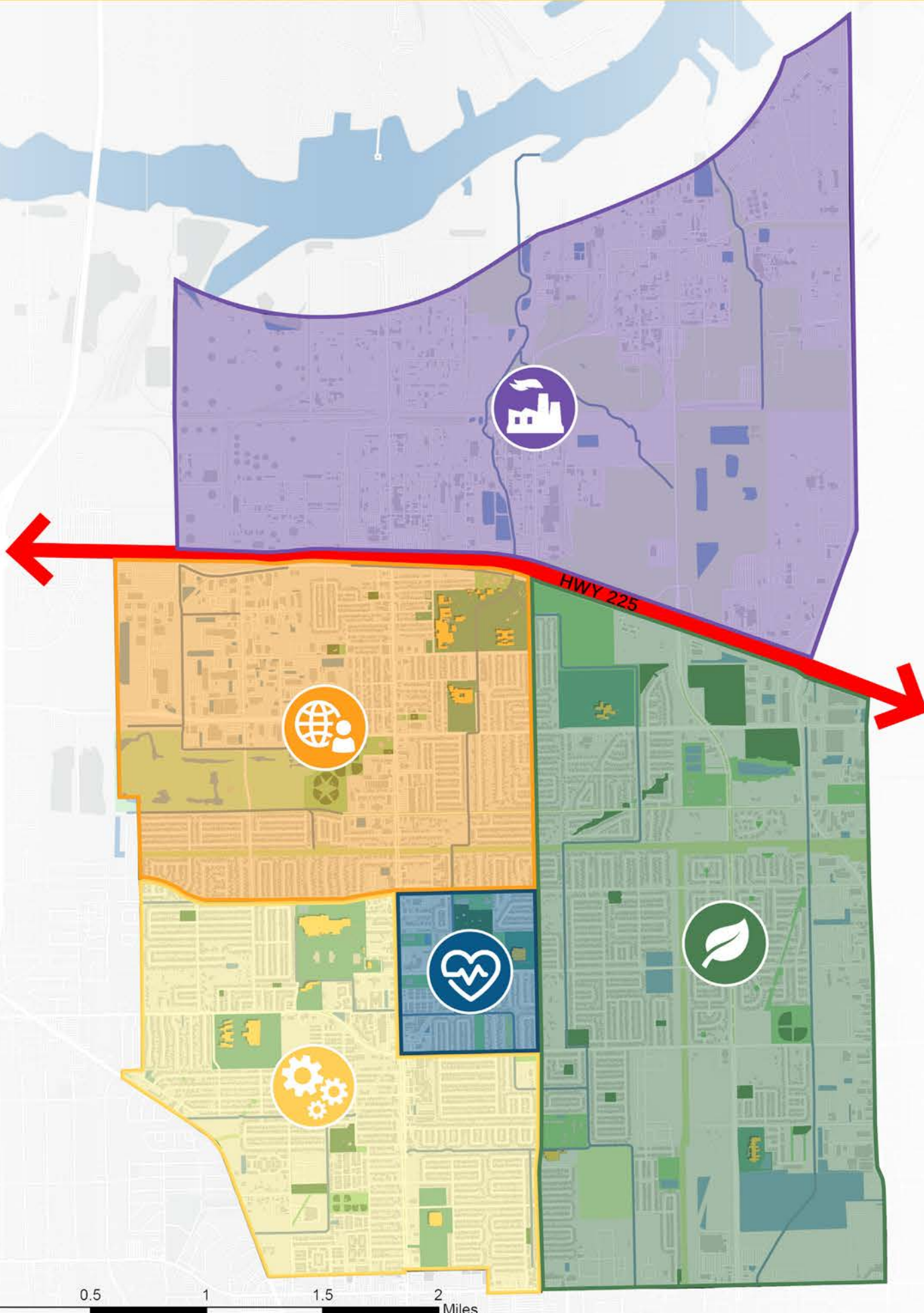


PRIORITY AREAS LEGEND

- GREEN SPACE NETWORK
- VERY HIGH PRIORITY
- HIGH PRIORITY
- MODERATE PRIORITY



FIVE THEME DISTRICTS



INDUSTRIAL DISTRICT

The industrial district is a dynamic and vital part of a city, contributing significantly to its economic growth while posing unique challenges related to infrastructure, environment, and community planning.

AREA
~ 4.6
SQUARE MILES

PARKS

0



CULTURAL-ARTS DISTRICT

Through a seamless blend of the past and present, the district endeavors to amplify the significance of its heritage, offering both visitors and residents an immersive experience that honors and celebrates the unique history that defines this charming community.

AREA
~ 2.6
SQUARE MILES

PARKS

5



LEARNING DISTRICT

The Learning District in Deer Park actively involves residents in educational programs within neighborhood parks. Tailored for the community, it introduces new programming to foster social bonds and community strengths. By utilizing educational initiatives, the Learning District seeks to enhance both individual skills and collective connections among the residents.

AREA
~ 2.3
SQUARE MILES

PARKS

5



CENTER DISTRICT

Situated at the heart of Deer Park, the Center District serves as the city's focal point. This central hub features Dow Park, epitomizing the community bond and underscoring the significance of outdoor programming for both residents and visitors. As the heartbeat of the city, the Center District pulsates with a sense of shared identity and a commitment to fostering a vibrant and inclusive community experience.

AREA
~ 0.4
SQUARE MILES

PARKS

1



NATURE DISTRICT

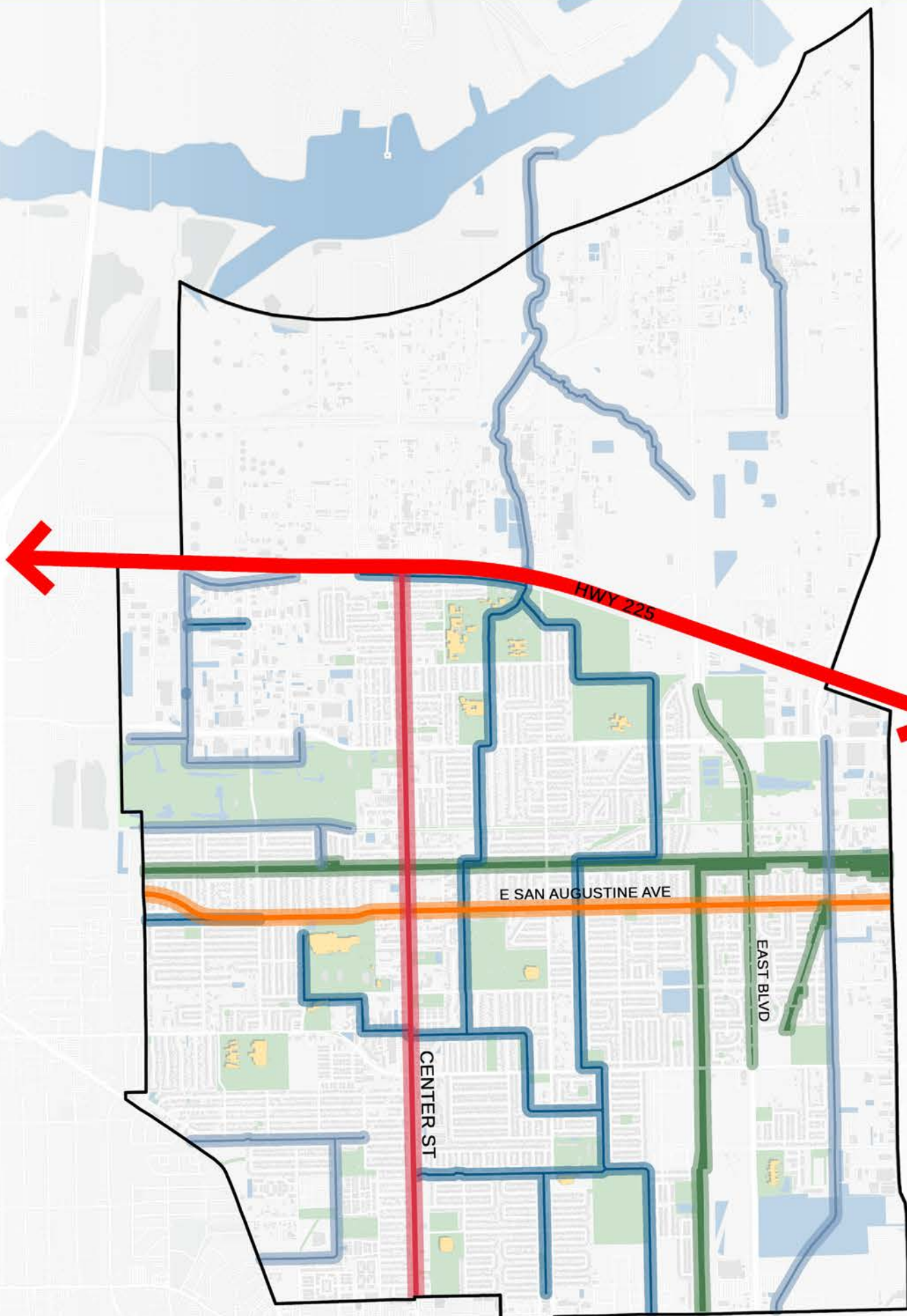
The Nature District initiative in Deer Park underscores the pivotal role of nature in enhancing the city's fabric. By introducing a greener landscape, the initiative not only elevates the quality of life for residents but also cultivates a sustainable image for Deer Park in comparison to neighboring communities.

AREA
~ 4.4
SQUARE MILES

PARKS

24
(7 HOA PARKS)

CHARACTERISTIC AND FUNCTIONAL CORRIDORS



THE VITAL ROLE OF CORRIDORS

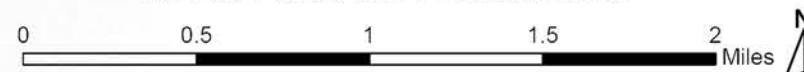
In Deer Park, corridors serve as vital connectors, forming a foundational link between different areas of the city. The three distinct corridor types—drainage canal corridors, street-human corridors, and open green space corridors—share the common objective of fostering connectivity.

Drainage canal corridors play a crucial role by linking green open spaces to the Buffalo Bayou channel, effectively managing storm water within the city. Street-human corridors seamlessly weave together places of interest, ranging from local businesses and parks to residential homes, creating a comprehensive network that enhances accessibility and community engagement. Additionally, open green space corridors contribute to the synergy of the green network, serving as interconnected pathways for both humans and wildlife.

These corridors hold significance in the city's overall analysis as integral components of the green network systems and the broader connectivity infrastructure. Their vertical and horizontal alignment throughout Deer Park not only ensures efficient storm water management but also enhances the overall accessibility and interconnectedness of the city, promoting a harmonious balance between urban development and natural elements.

CORRIDOR LEGEND

- CONCRETE DRAINAGE CANAL CORRIDOR
- GREEN DRAINAGE CANAL CORRIDOR
- CIVIC CORRIDOR
- COMMERCIAL CORRIDOR
- GREEN OPEN SPACE CORRIDOR
- GREEN SPACE NETWORK
- DEER PARK ISD FOOTPRINT
- BUILDING FOOTPRINT
- WATER - DETENTION PONDS
- PRINCIPAL ARTERIAL
- DEER PARK CITY BOUNDARY



TYPES OF CORRIDORS

Deer Park features a diverse array of corridors, including Concrete vs. Green drainage canals, Civic vs. Commercial corridors, and green open space corridors. Each corridor type plays a vital role in the seamless interconnection of the city—facilitating the efficient movement of storm water, linking people to various destinations, and connecting green spaces for both aesthetic and environmental benefits.

DRAINAGE CANALS CONCRETE

East X Street



DRAINAGE CANALS GREEN SWALE

East Pasadena Street



CIVIC CORRIDOR

East San Augustine Street



COMMERCIAL CORRIDOR

Center Street



CENTER-POINT EASEMENT

Luella Ave.



P STREET RIGHT OF WAY

East P Street



COMMUNITY AMENITIES AND HUBS

COMMUNITY DYNAMICS

The community amenities in Deer Park are primarily concentrated along the Center Street corridor and the western side of the city. This alignment is closely tied to Center Street's role as the main commercial thoroughfare. Historical markers, divided into Texas and Deer Park categories, are centrally located at the intersection of Center Street and East 13th Street. Preserving these markers is vital for upholding Deer Park's cultural heritage and unique identity.

Furthermore, strategic placement of daycares and senior living facilities is essential to inform intergenerational design programming. Identifying suitable areas accessible to both the youth and senior community ensures a thoughtful and inclusive approach to community planning. By pinpointing these facilities, we can foster a sense of community cohesion and facilitate interactions between different age groups, enriching the overall community experience.

IMPORTANCE OF COMMUNITY

Community amenities are vital contributors to the overall quality of life for residents, playing a pivotal role in fostering the well-being of a community. Community amenities collectively shape a community into a multifaceted and thriving environment. Beyond meeting basic needs, these amenities contribute to a community's identity, social cohesion, and the overall happiness and satisfaction of its residents, creating a space that people are proud to call home.

ROLE OF COMMUNITY AMENITIES



PUBLIC SAFETY

- ▲ Fire Stations
- Police Stations



PUBLIC EDUCATION

- Library
- Deer Park ISD Schools
- Day Care
- Community Centers



SOCIALIZATION

- Day Care
- Senior Living
- Community Centers
- Deer Park ISD Schools



HISTORICAL PRESERVATION

- ★ Texas Historic Markers
- ★ Deer Park Historic Markers



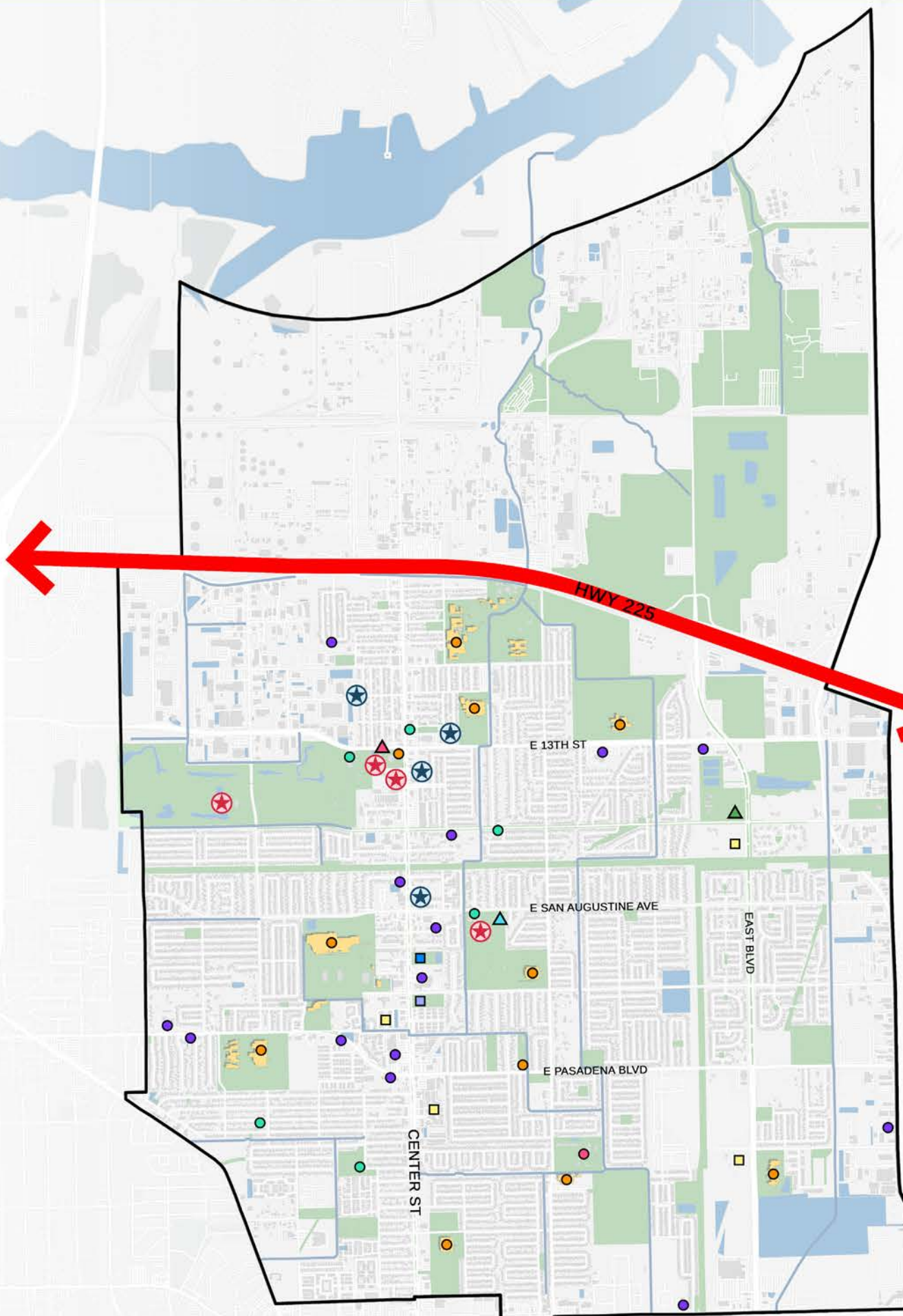
CULTURAL ENRICHMENT

- ▲ Theater Building
- ★ Deer Park Historic Markers



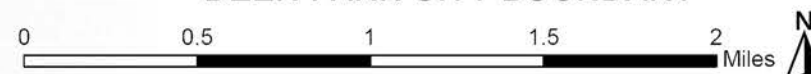
CIVIC ENGAGEMENT

- Community Centers
- ▲ City Hall Building
- ▲ Fire Station
- Police Station

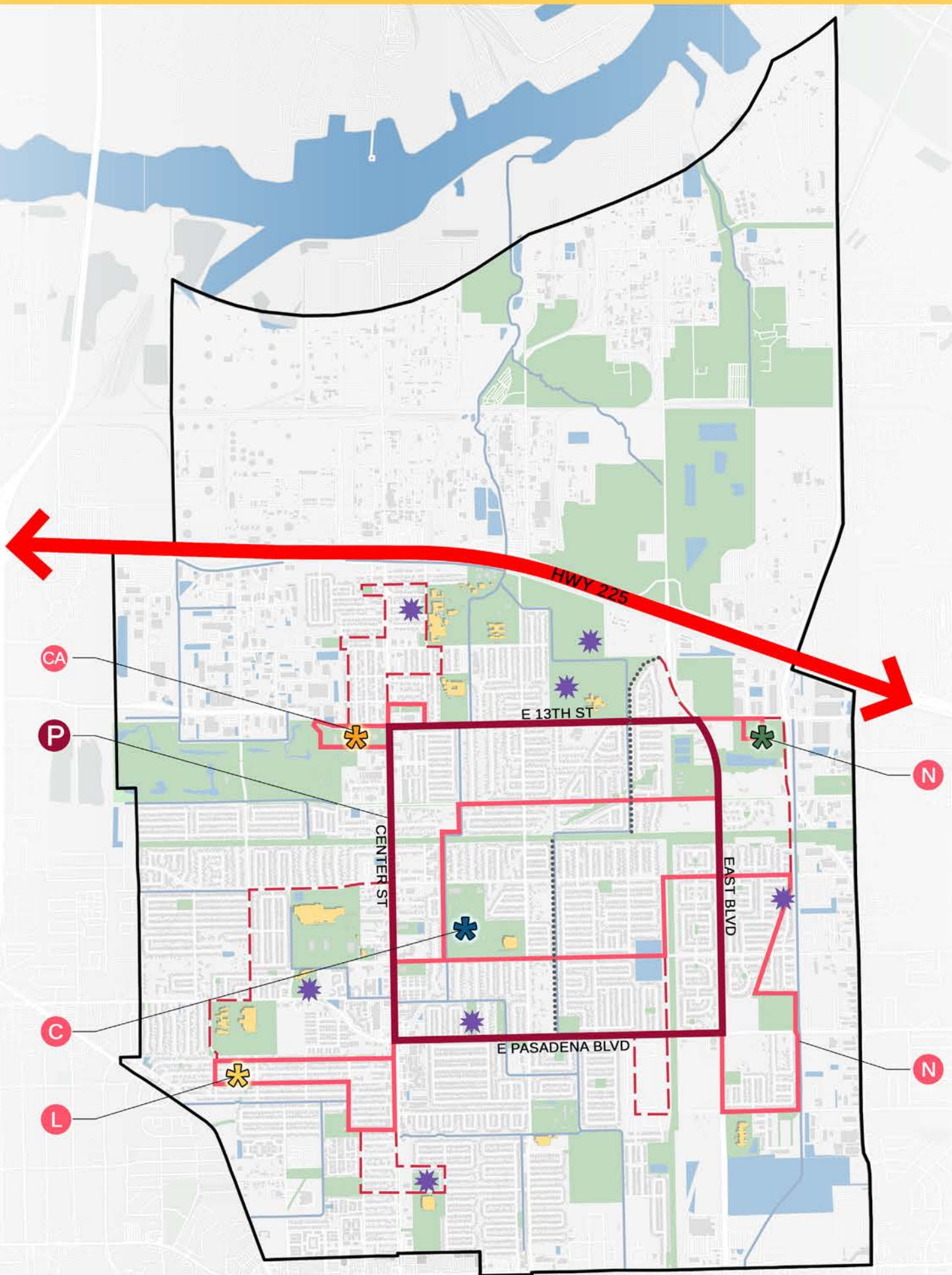


COMMUNITY AMENITIES LEGEND

- DAY CARE
- ▲ FIRE STATIONS
- SENIOR LIVING
- COMMUNITY CENTERS
- ▲ CITY HALL BUILDING
- LIBRARY
- DEER PARK ISD SCHOOLS
- ▲ THEATER BUILDING
- POLICE STATION
- ★ TEXAS HISTORIC MARKERS
- ★ DEER PARK HISTORIC MARKERS
- GREEN SPACE NETWORK
- DEER PARK ISD FOOTPRINT
- BUILDING FOOTPRINT
- WATER - DETENTION PONDS
- DRAINAGE CANALS
- PRINCIPAL ARTERIAL
- DEER PARK CITY BOUNDARY



CONNECTIVITY AND MULTI-LEVEL TRAIL SYSTEM



CONNECTIVITY SYSTEM

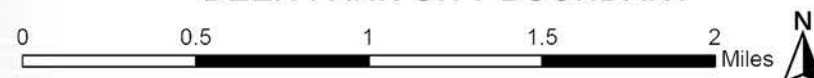
The existing hike-bike trails consists of 1.7 miles of decomposed granite trails.

The proposed trail system will add 22.7 miles of connectivity opportunities.

- P** DEER PARK PRIMARY LOOP
Total Mileage - 6 Miles
- CA** CULTURAL-ARTS TRAIL
Total Mileage - 3.2 Miles
- L** LEARNING TRAIL
Total Mileage - 5 Miles
- C** CENTER TRAIL
Total Mileage - 3.8 Miles
- N** NATURE TRAIL
Total Mileage - 4.7 Miles

PROPOSED CONNECTIVITY SYSTEM

- EXISTING HIKE/BIKE TRAIL
- PRIMARY TRAIL LOOP
- SECONDARY TRAIL LOOP
- - - TERTIARY TRAIL LOOP
- * DISTRICT POINT OF INTEREST
- * CULTURAL - ARTS DISTRICT
- * LEARNING DISTRICT
- * CENTER DISTRICT
- * NATURE DISTRICT
- * PROPOSED POCKET PARK
- GREEN SPACE NETWORK
- DEER PARK ISD FOOTPRINT
- BUILDING FOOTPRINT
- WATER - DETENTION PONDS
- DRAINAGE CANALS
- PRINCIPAL ARTERIAL
- DEER PARK CITY BOUNDARY



POINTS OF INTEREST



CULTURAL - ARTS DISTRICT

ART PARK PLAYERS THEATRE
JIMMY BURKE CENTER



LEARNING DISTRICT

KINGSDALE REC CENTER



CENTER DISTRICT

DOW PARK
CITY HALL AND COMMUNITY CENTER

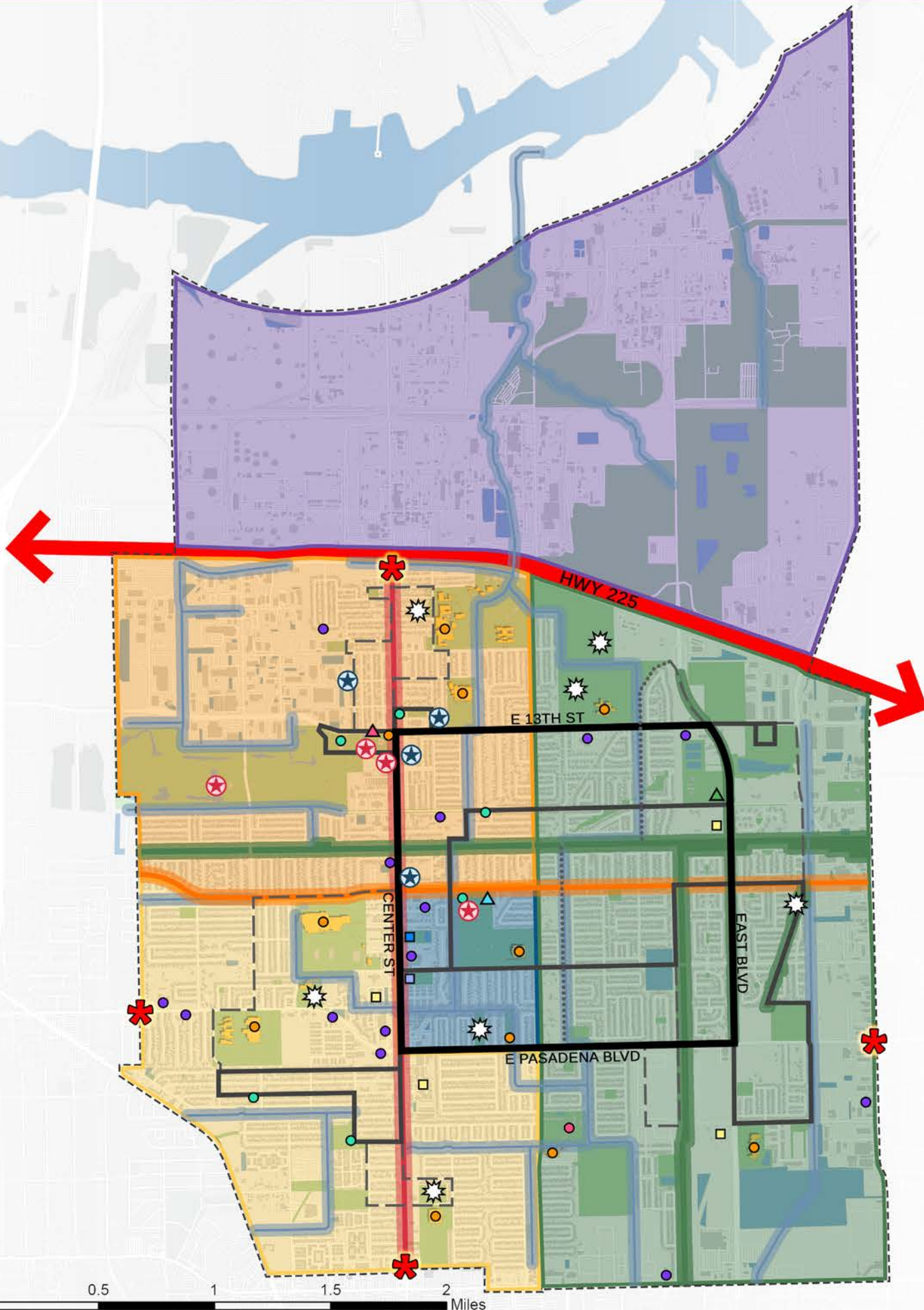


NATURE DISTRICT

NATURE PRESERVE



PARKS, RECREATION, AND OPEN SPACE MASTER PLAN FRAMEWORK



FRAMEWORK LEGEND

- GREEN SPACE NETWORK
 - DEER PARK ISD FOOTPRINT
 - BUILDING FOOTPRINT
 - WATER - DETENTION PONDS
 - PRINCIPAL ARTERIAL
 - DEER PARK CITY BOUNDARY
- (5) DISTRICTS**
- INDUSTRIAL DISTRICT
 - CULTURAL-ARTS DISTRICT
 - LEARNING DISTRICT
 - NATURE DISTRICT
 - CENTER DISTRICT
- (4) GATEWAY ENTRANCES**
- INDUSTRIAL DISTRICT
- (3) CORRIDORS**
- DRAINAGE CANAL CORRIDOR
 - CIVIC CORRIDOR
 - COMMERCIAL CORRIDOR
 - GREEN OPEN SPACE CORRIDOR
- (2) COMMUNITY HUBS**
- CULTURAL-ARTS HUB
CIVIC AND COMMUNITY HUB
- DAY CARES
 - FIRE STATIONS
 - SENIOR LIVING
 - COMMUNITY CENTERS
 - CITY HALL BUILDING
 - LIBRARY
 - DEER PARK ISD SCHOOLS
 - THEATER BUILDING
 - POLICE STATION
 - TEXAS HISTORIC MARKERS
 - DEER PARK HISTORIC MARKERS
- (1) INTERCONNECTED TRAIL SYSTEM**
- PRIMARY TRAIL LOOP
 - SECONDARY TRAIL LOOP
 - TERTIARY TRAIL LOOP
 - EXISTING HIKE/BIKE TRAIL
 - PROPOSED POCKET PARK

CITY LEGIBILITY

Kevin Lynch's concept of city legibility, as presented in his influential work "The Image of the City," refers to the ease with which individuals can navigate and comprehend urban environments. Lynch argued that legible cities possess distinct landmarks, clear pathways, and recognizable nodes that contribute to a cohesive mental map for residents. This idea underscores the importance of urban design in creating cities that are not only physically navigable but also psychologically accessible, enhancing the overall quality of life for their inhabitants.

5 ELEMENTS FOR A CITY

- PATH**
- Primary Loop
 - Secondary Trail
 - Tertiary Trail
 - Drainage Corridor
 - Green Corridor
 - Civic Corridor
 - Commercial Corridor
 - Highway 225
- EDGE**
- Highway 225
 - City Boundary
 - Buffalo Bayou Canal
 - District Boundaries
 - Corridors
- LANDMARK**
- Historical Markers
 - City Hall Building
 - Fire Stations
 - School Stadium
 - Water Towers
- DISTRICT**
- Industrial District
 - Learning District
 - Nature District
 - Center District
 - Cultural-Arts District
- NODE**
- Major Intersections
 - Center Street
 - Dow Park
 - Parks and Recreation Facilities
 - Deer Park ISD Schools

LOCATION OF TARGET PARK SITES

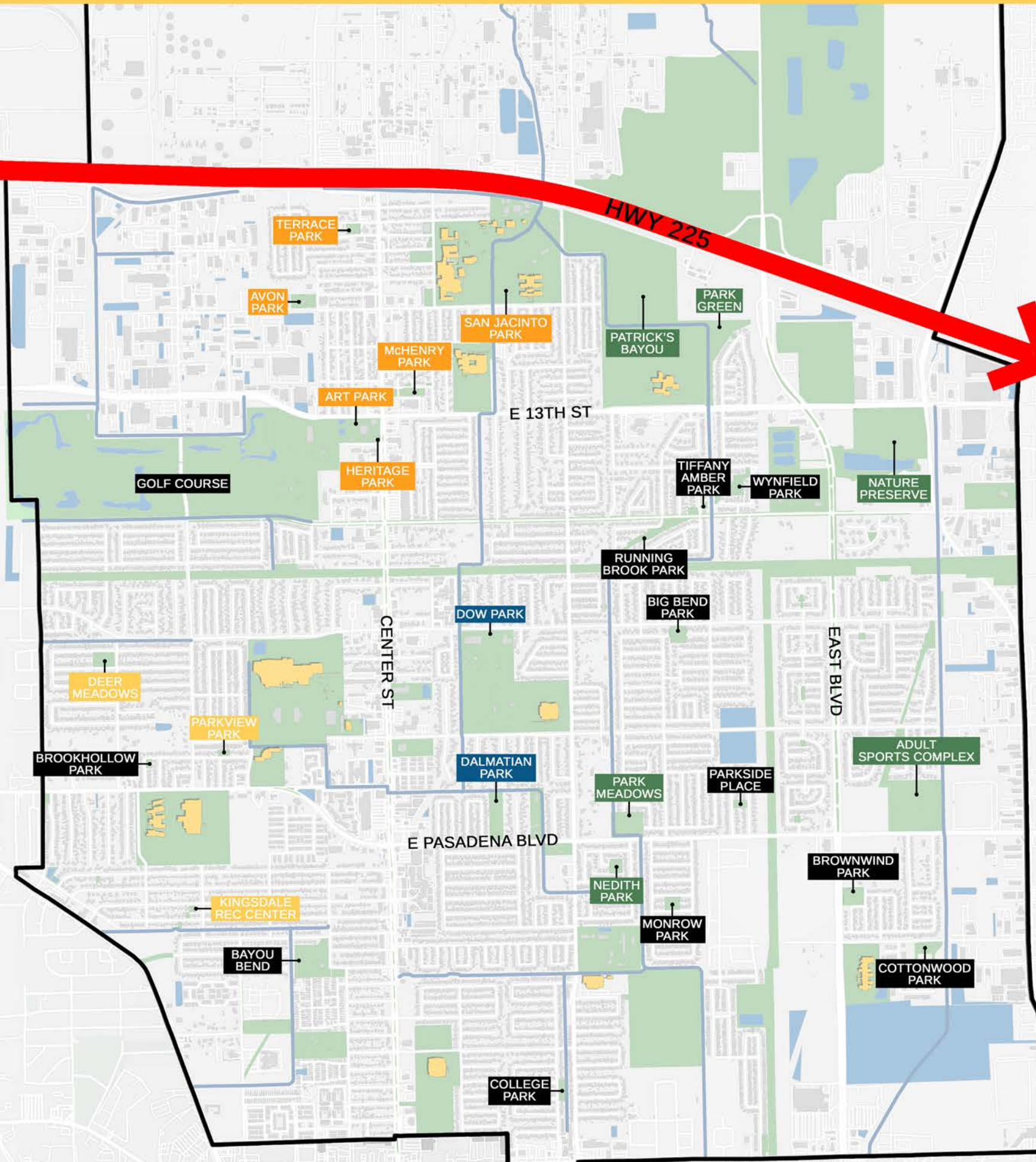
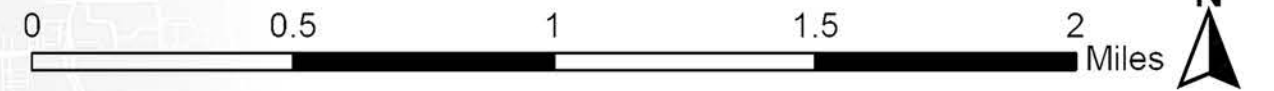
TARGET SITE DESIGNS BY STUDENTS

Deer Park boasts 28 community parks, with the Texas A&M Landscape Architecture and Urban Planning department collaborating with the city to craft a comprehensive master plan for the next decade. As a result, 17 of these parks have undergone development or renovation to better serve the needs of the community.

CULTURAL-ARTS DISTRICT	NATURE DISTRICT	LEARNING DISTRICT	CENTER DISTRICT
TERRACE PARK	PARK GREEN PARK	DEER MEADOWS	DOW PARK
AVON PARK	PATRICK'S BAYOU	PARKVIEW PARK	DALMATIAN PARK
ART PARK	ADULT SPORTS COMPLEX	KINGSDALE REC CENTER	
HERITAGE PARK	PARK MEADOWS		
McHENRY PARK	NEDITH PARK		
SAN JACINTO PARK	NATURE PRESERVE		

TARGET SITE DESIGN LEGEND

- CULTURAL-ARTS DISTRICT TARGET SITES
- NATURE DISTRICT TARGET SITES
- LEARNING DISTRICT TARGET SITES
- CENTER DISTRICT TARGET SITES
- DEER PARK ISD FOOTPRINT
- BUILDING FOOTPRINT
- WATER - DETENTION PONDS
- DRAINAGE CANALS
- PRINCIPAL ARTERIAL
- DEER PARK CITY BOUNDARY

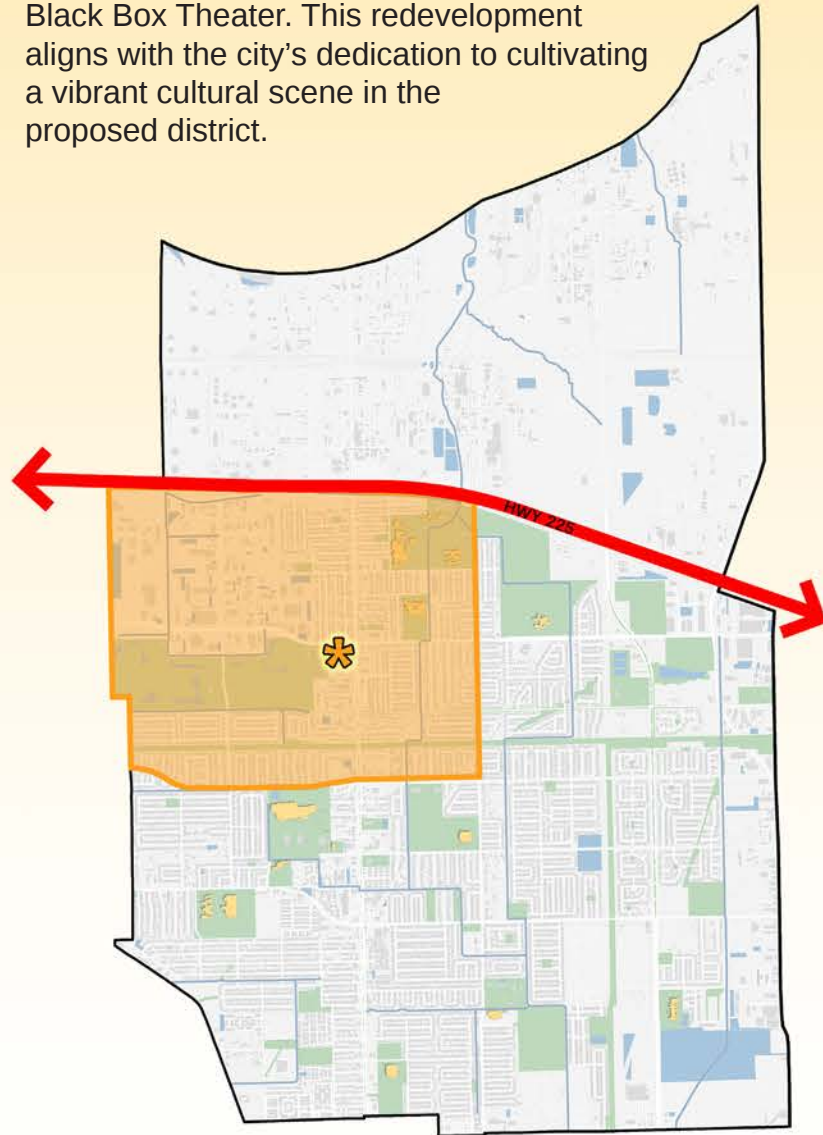


CULTURAL-ARTS DISTRICT - ART PARK

MUNICIPAL COURT AND THEATER

In the planned cultural and arts district, the focus is on revitalizing the current municipal court, theater, and fire department complex. The municipal court building will be converted into the Art Park Platers Theater, while the court itself will move to the south-west corner, optimizing space.

The fire department building is set to become a modern Black Box Theater. This redevelopment aligns with the city's dedication to cultivating a vibrant cultural scene in the proposed district.

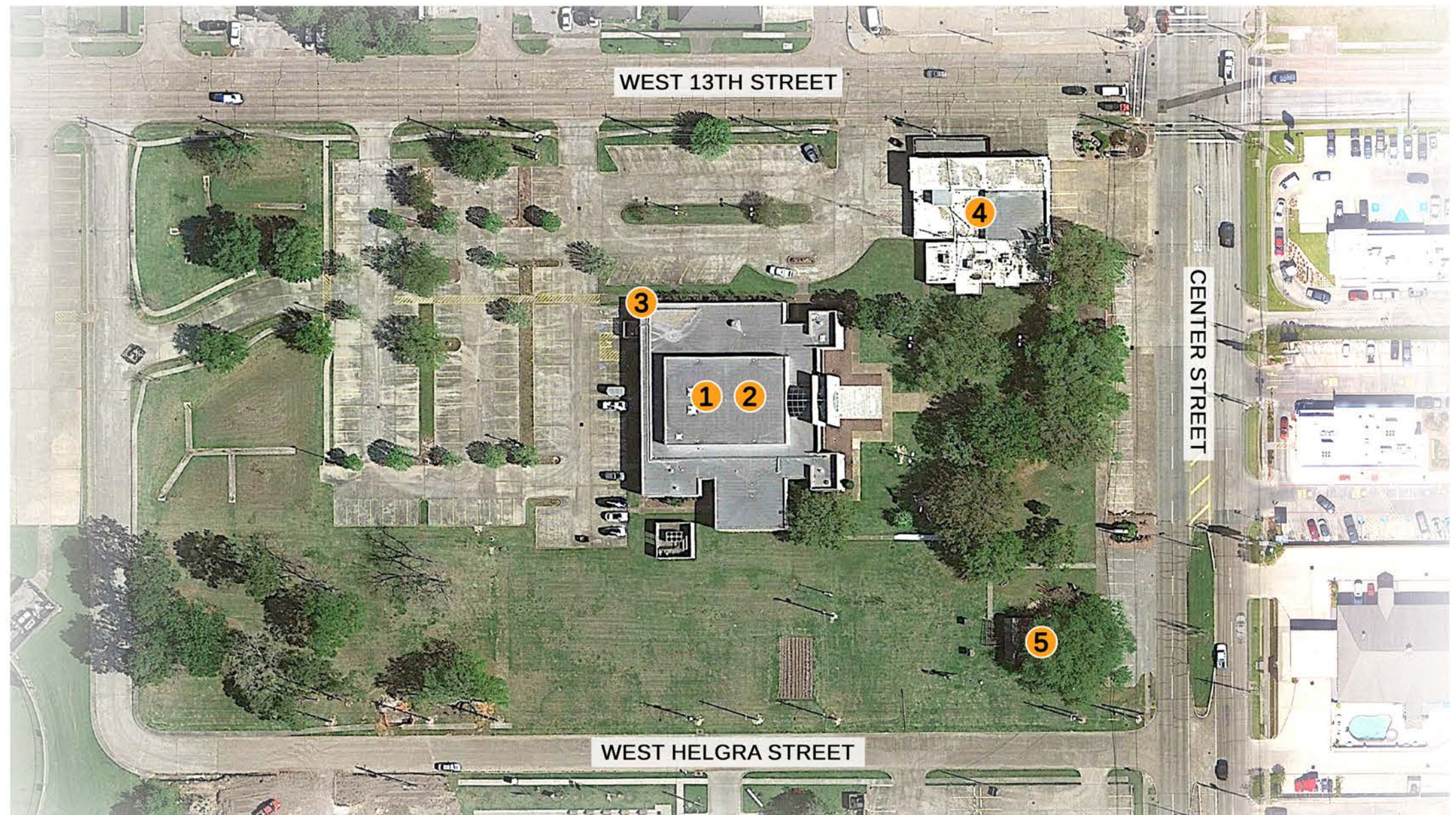


TARGET SITE DESIGN DISTRICT

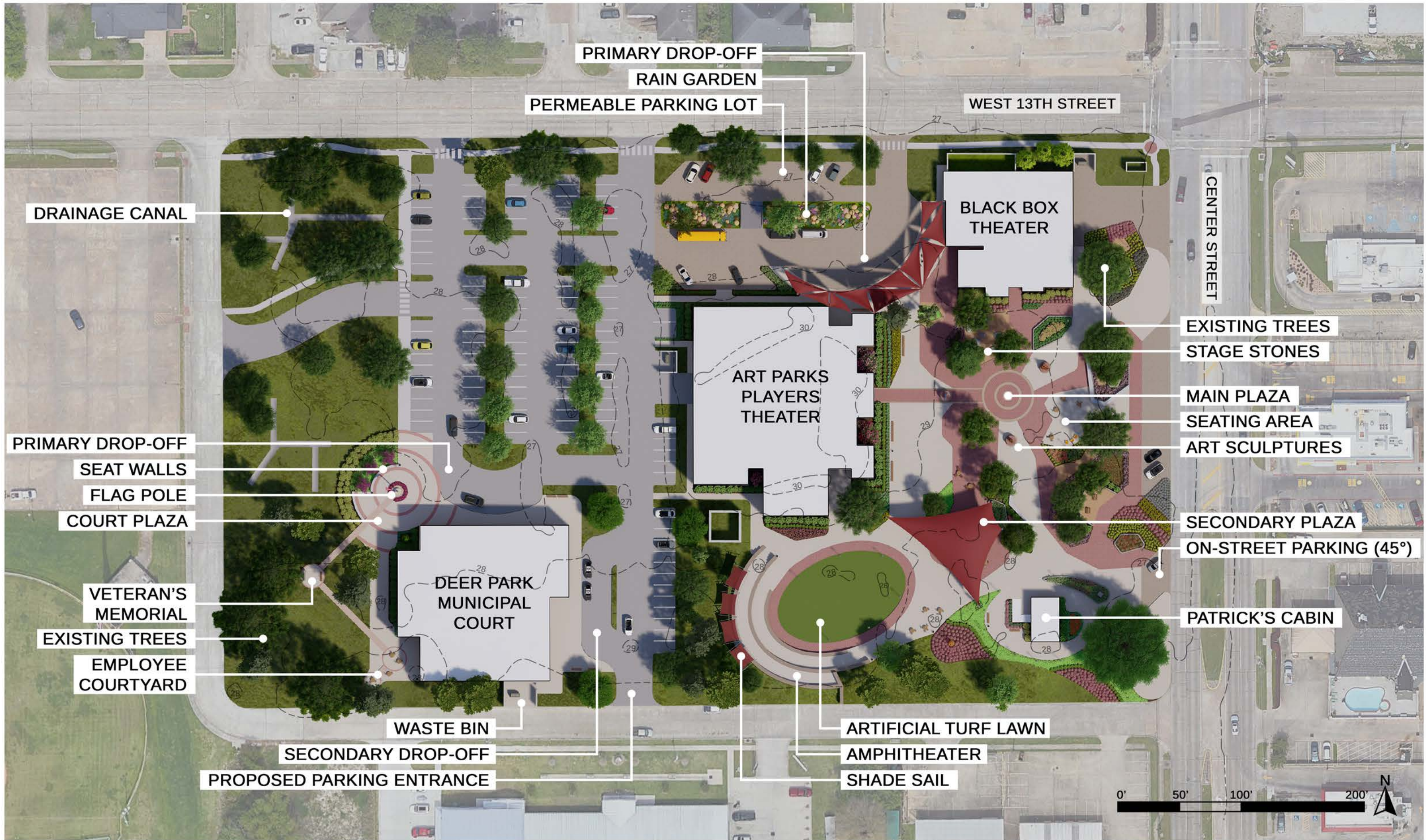
- CULTURAL-ARTS DISTRICT
- ✱ MUNICIPAL COURT - THEATER
- PRINCIPAL ARTERIAL
- DEER PARK CITY BOUNDARY



1	2	3	4	5
MUNICIPAL COURT	THEATER	COURT-THEATER	FIRE DEPARTMENT	PATRICK'S CABIN
USER GROUP Government Employees Deer Park Residents General Public	USER GROUP Theater Employees Volunteers Deer Park Residents Audience Members	SHARED FEATURES Auditorium Parking Lot and Street Parking	USER GROUP 11 Firefighters 4 Dual Service Employees General Public	USER GROUP Deer Park Residents Visitors-Tourist General Public
OPERATION HOURS Monday to Friday 8 AM - 5 PM	OPERATION HOURS Monday to Friday 10 AM - 10 PM Shows Times: Friday to Sunday	AUDITORIUM SEATS 238	OPERATION HOURS Open 24 Hours 7 Days out of the Week	OPERATION HOURS Open 24 Hours 7 Days out of the Week
SQUARE FOOTAGE ~40,000 ft ²	SQUARE FOOTAGE ~20,000 ft ²	PARKING SPACES Spaces: 125 ADA Spaces: 6	SQUARE FOOTAGE ~10,000 ft ²	SQUARE FOOTAGE ~1,000 ft ²



CULTURAL-ARTS DISTRICT - ART PARK



CULTURAL-ARTS DISTRICT - ART PARK



PROGRAMMING OPPORTUNITIES

1. DUAL PURPOSE PARKING LOT

Purpose 1: Permeable Parking

Features: 11 Parking Spots, 5 ADA Parking Spots, 3 Bus Parking Spots, and Semi-Circle Drop Off

Programming: Competition Visitor Parking



Purpose 2: Festival Grounds

Features: Food Truck Parking and ~20,000 Square Feet of Event Space

Programming: Farmers Markets or Block Parties



2. SHADED DANCE PLAZA

Features: Large Shade Sail and ~6500 Square Feet of Event Space

Programming: Two-Step Dancing



Programming: Mexican Folk Dancing



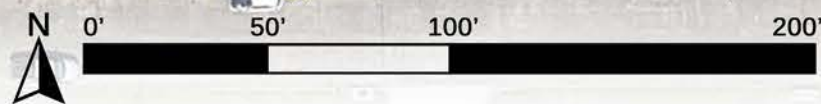
3. ARTIFICIAL TURF AND AMPHITHEATER

Features: ~3000 Square Feet of Turf and Amphitheater can Accommodate 200 People

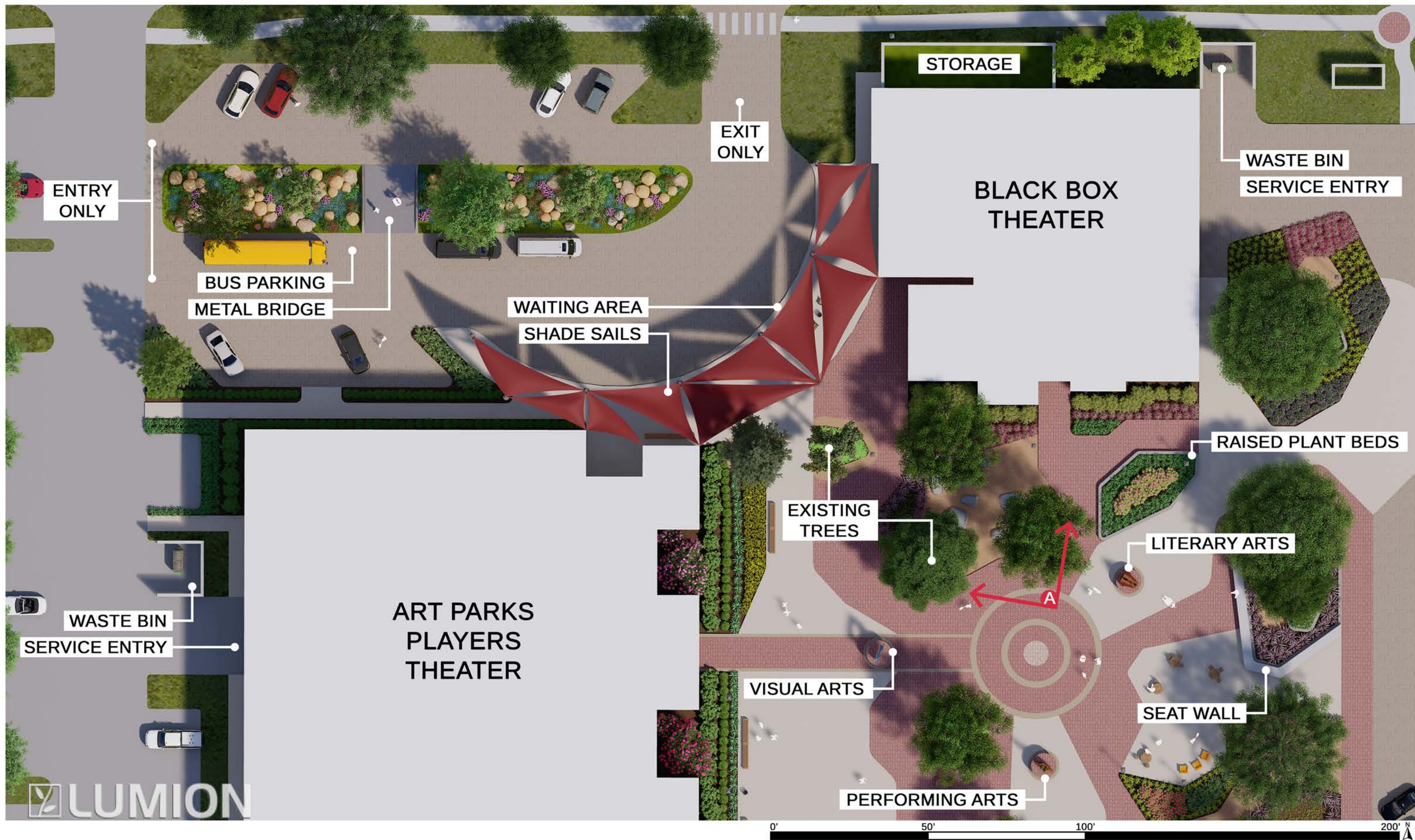
Programming: Concerts



Programming: Theater Shows



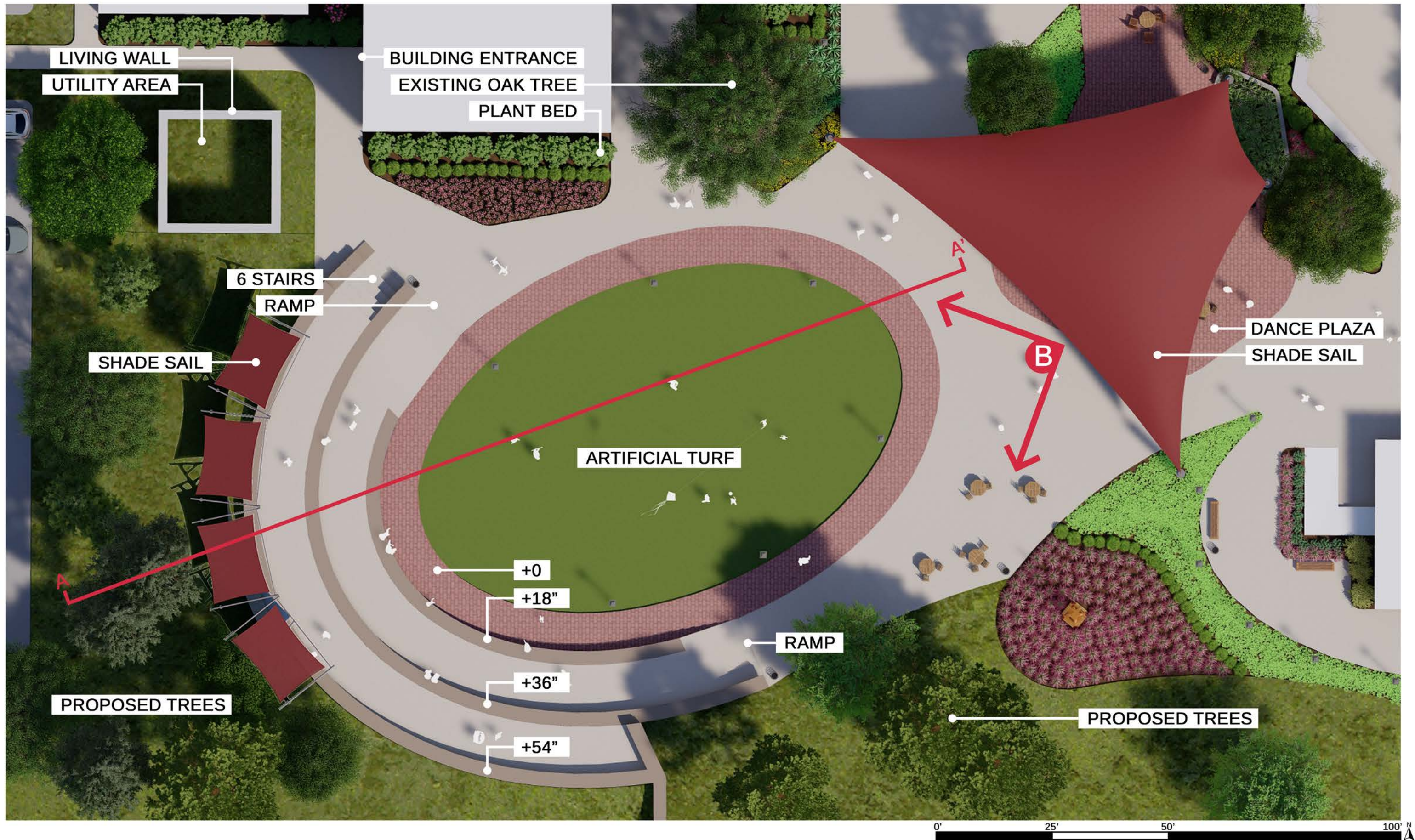
CULTURAL-ARTS DISTRICT - ART PARK



CULTURAL-ARTS DISTRICT - ART PARK

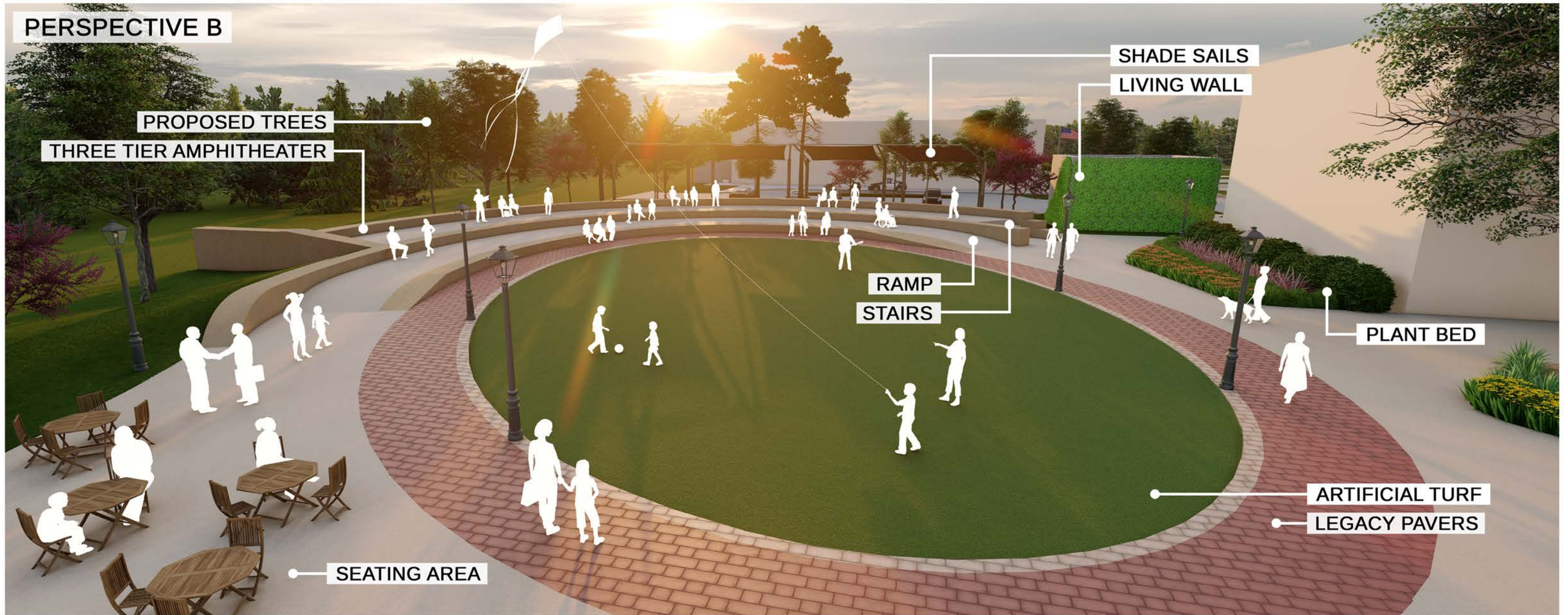


CULTURAL-ARTS DISTRICT - ART PARK

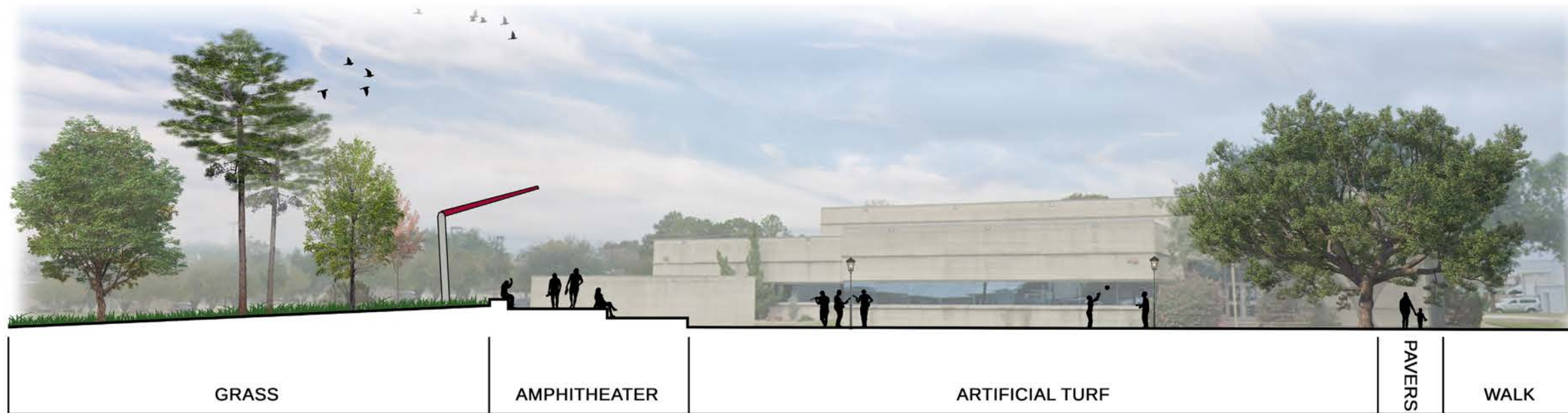


CULTURAL-ARTS DISTRICT - ART PARK

PERSPECTIVE B



SECTION CUT



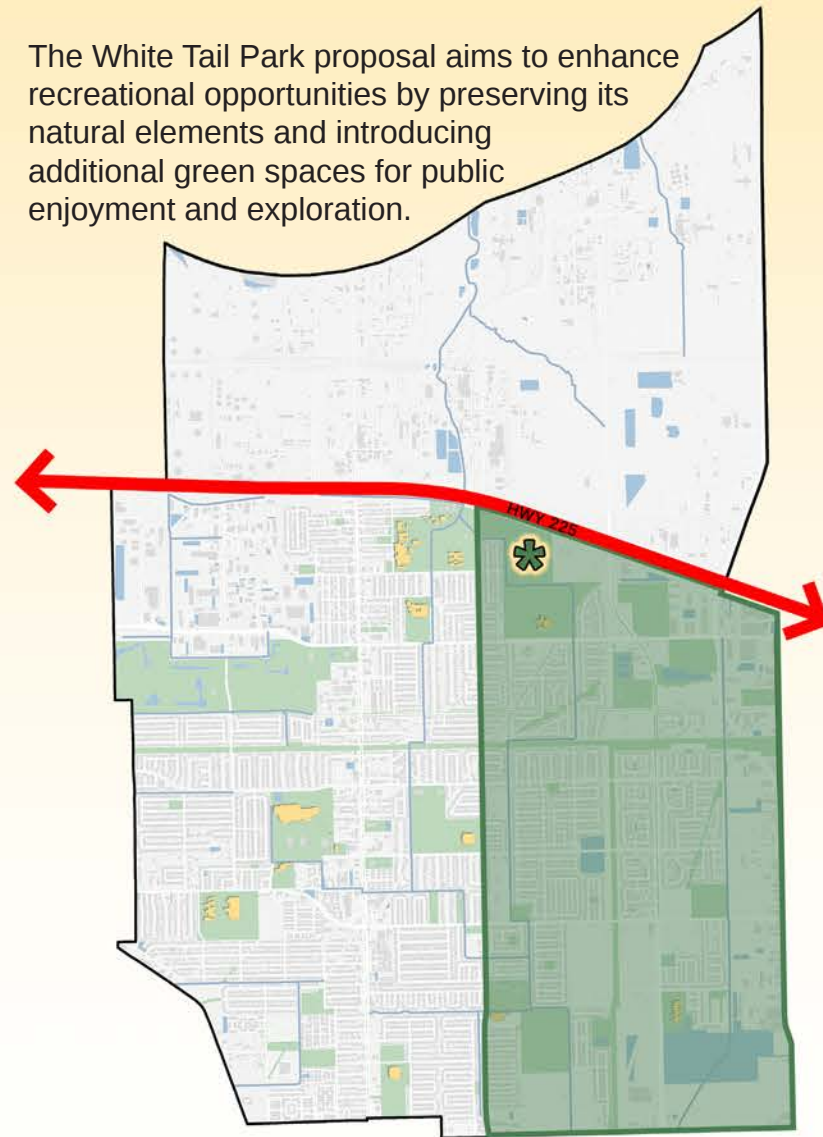
0 5 10 20'

NATURE DISTRICT - WHITE TAIL PARK, PATRICK'S BAYOU

PATRICK'S BAYOU DETENTION POND

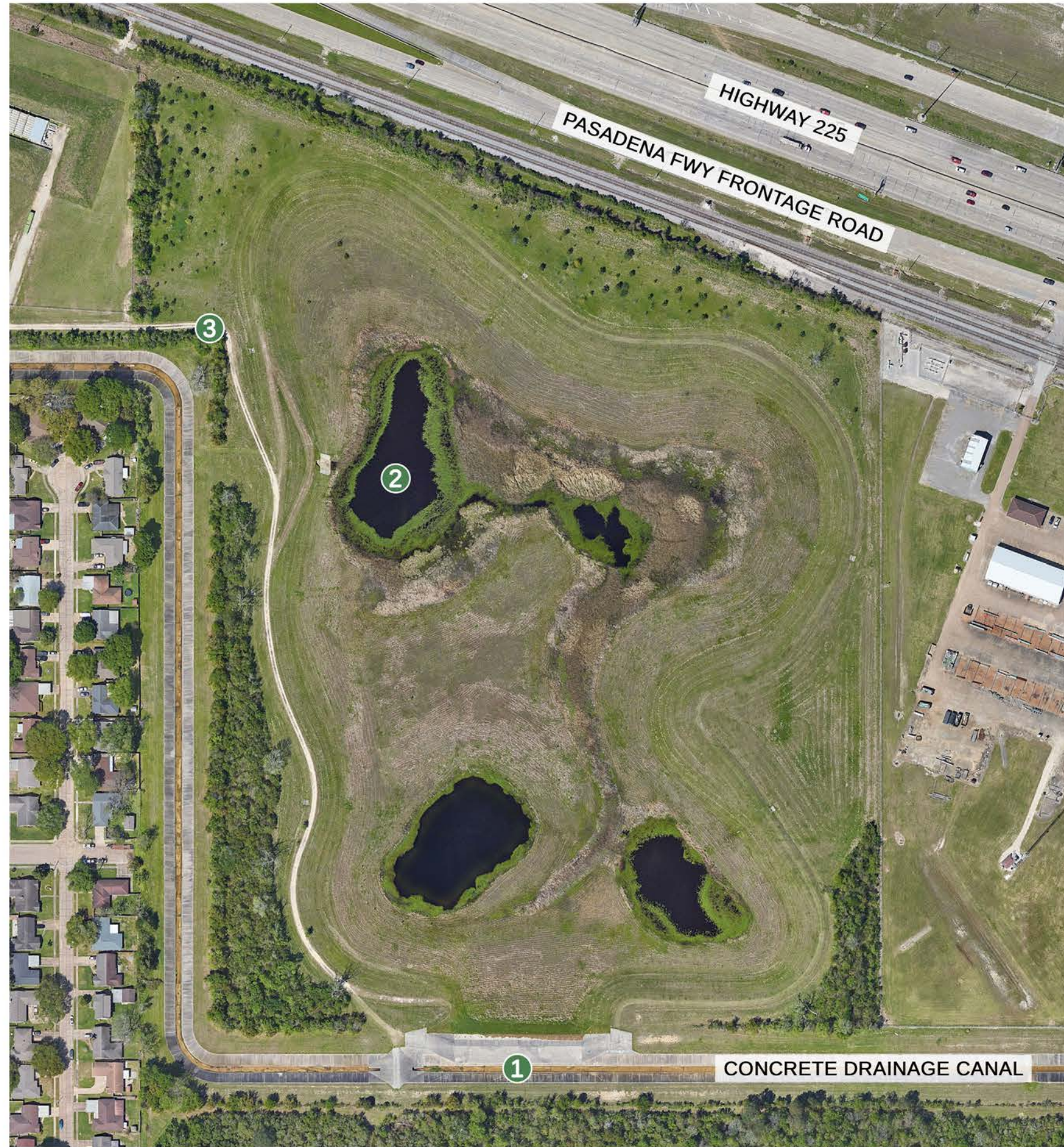
In the planned nature district, the main goal is to conserve natural elements while incorporating more green spaces, vegetation, and educational opportunities about nature. The detention pond, situated at the northernmost point under the 225 Highway, currently serves to manage water during storms/flooding. Eventually, stormwater will flow north to the Buffalo Bayou Canal.

The White Tail Park proposal aims to enhance recreational opportunities by preserving its natural elements and introducing additional green spaces for public enjoyment and exploration.



TARGET SITE DESIGN DISTRICT

- NATURE DISTRICT
- PATRICK'S BAYOU DETENTION POND
- PRINCIPAL ARTERIAL
- DEER PARK CITY BOUNDARY



1

PATRICK'S BAYOU

ELEMENT

Man-Made Concrete Drainage Canal with Overflow Gutter

FUNCTIONS

Funnel Stormwater to Buffalo Bayou Canal

2

DETENTION POND

ELEMENT

Natural Land Detention Pond with 4 Distinct Ponds

FUNCTIONS

Designed to Manage an Influx Stormwater Runoff with Natural Filtration Practices with Vegetation and Soil

3

SERVICE ROAD

ELEMENT

Gravel Based 10 Foot Service Road

FUNCTIONS

Provides Throughfair and Access for Maintenance Purposes

NATURE DISTRICT - WHITE TAIL PARK, PATRICK'S BAYOU

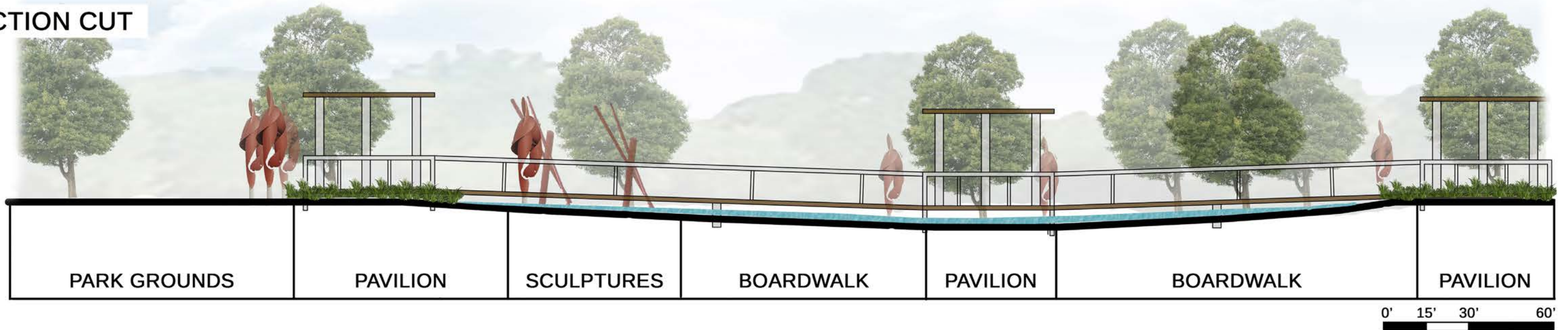


NATURE DISTRICT - WHITE TAIL PARK, PATRICK'S BAYOU

PERSPECTIVE A



SECTION CUT



NATURE DISTRICT - WHITE TAIL PARK, PATRICK'S BAYOU

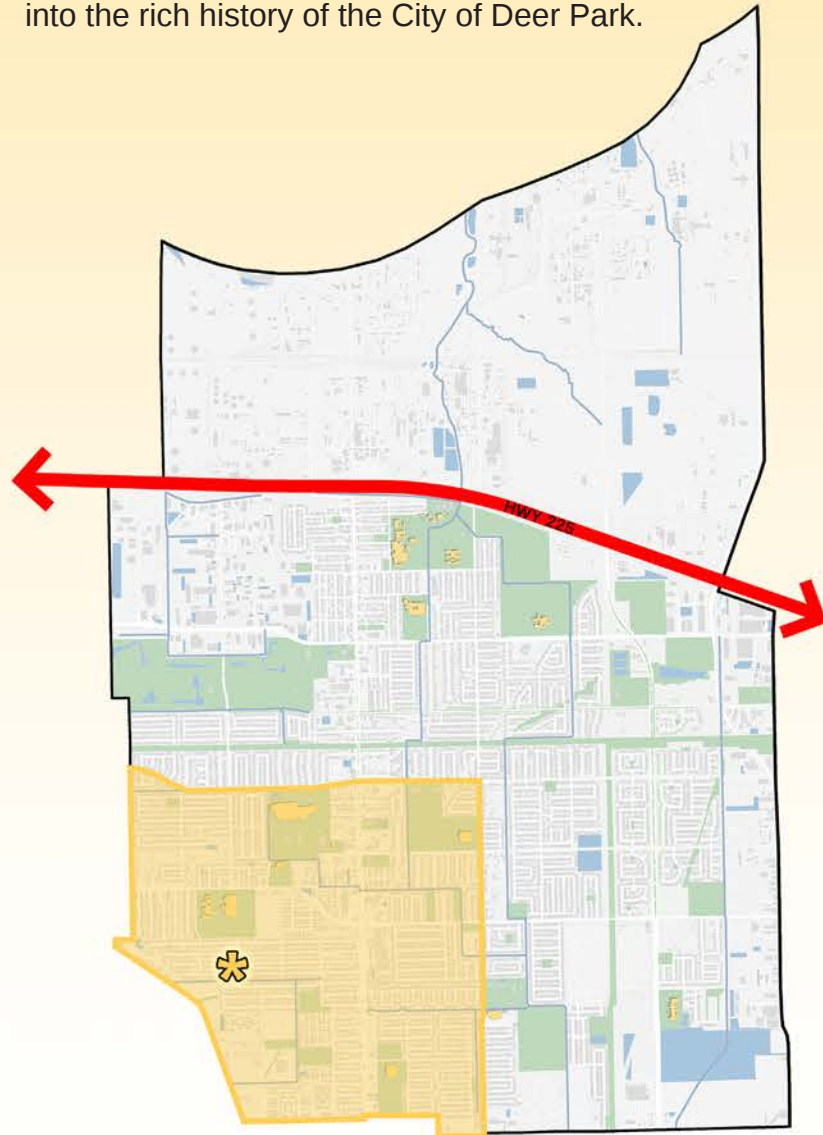
PERSPECTIVE A



LEARNING DISTRICT - DEER MEADOWS PARK

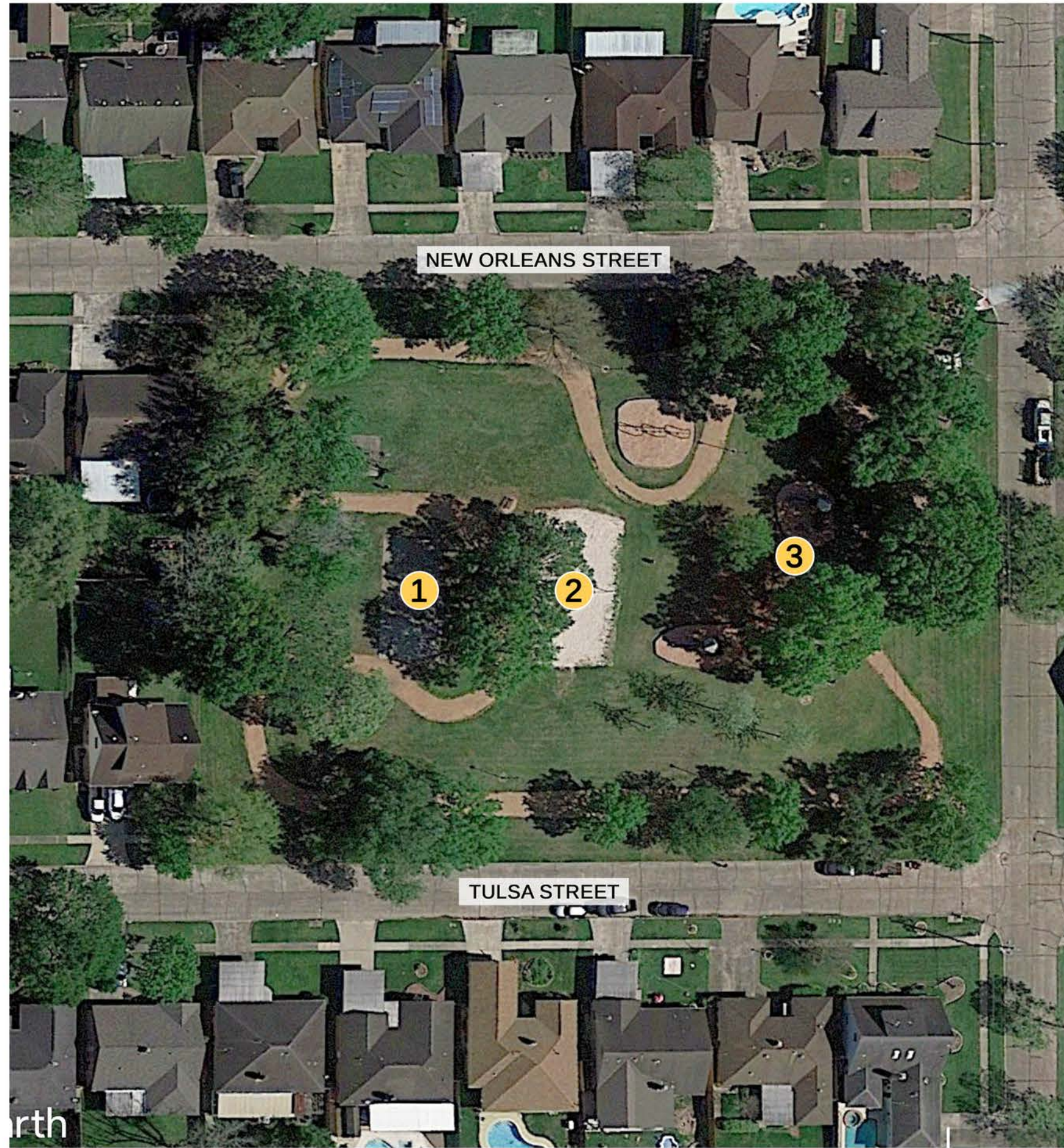
DEER MEADOWS PARK

In the planned learning district, our objective is to foster a culture of lifelong learning within the community. Deer Meadows, a frequently visited area due to its orientation and amenities, offers various physical activity programming such as volleyball, basketball, and playgrounds. The renovation of Deer Meadows seeks to maintain these recreational elements while also enhancing learning opportunities, particularly by delving into the rich history of the City of Deer Park.



TARGET SITE DESIGN DISTRICT

- LEARNING DISTRICT
- DEER MEADOWS PARK
- PRINCIPAL ARTERIAL
- DEER PARK CITY BOUNDARY



1

BASKETBALL COURT

USER GROUP

Park Visitors
Deer Park Residents
General Public

ELEMENTS

Full Court
2 Basketball Goal Post

2

VOLLEYBALL COURT

USER GROUP

Park Visitors
Deer Park Residents
General Public

ELEMENTS

Sand Volleyball Court
1 Volleyball Net

3

PLAY AREA

USER GROUP

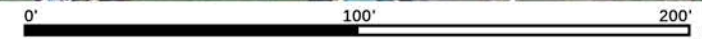
Specifically Children
Park Visitors
Deer Park Residents
General Public

ELEMENTS

2 Playground Sets
Swing Sets

SQUARE FOOTAGE

Playground Areas: ~2,900 ft²



LEARNING DISTRICT - DEER MEADOWS PARK

HISTORICAL MEMORIAL PATHWAY
ON STREET PARKING
PAVILION WITH GREEN SPACE

HISTORICAL MEMORIAL PATHWAY

OPEN GREEN LAWN
MEMORIAL ENGRAVED PATHWAY

PARK SIGNAGE

SHADED SEATING

VOLLEYBALL COURT

PICNIC AREA

BASKETBALL COURT

CHILDREN PLAYGROUND
ADULT PLAY

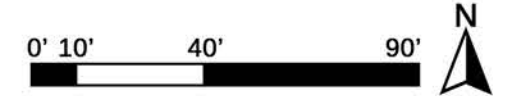
TULSA STREET

OKLAHOMA AVE

LEGEND

 PERSPECTIVE POINT OF VIEW

 SECTION CUT LINE



LEARNING DISTRICT - DEER MEADOWS PARK

PERSPECTIVE A



LEARNING DISTRICT - DEER MEADOWS PARK

PERSPECTIVE B



EARLY HISTORY

Dr. George Moffit Patrick
purchased land in the 1830's. This became the Patrick Survey, which was the most well-known and covered the largest area that became Deer Park. After defeating the powerful Mexican Army at the Battle of San Jacinto, General Sam Houston, David Burnet and the Texas Cabinet met at a nearby cabin to draft the initial treaty papers. This cabin, which belonged to Dr. George Moffit Patrick, was located in present day Deer Park on Buffalo Bayou. Because of this, Deer Park holds the significant distinction of being the true Birthplace of Texas.

HISTORICAL MARKERS

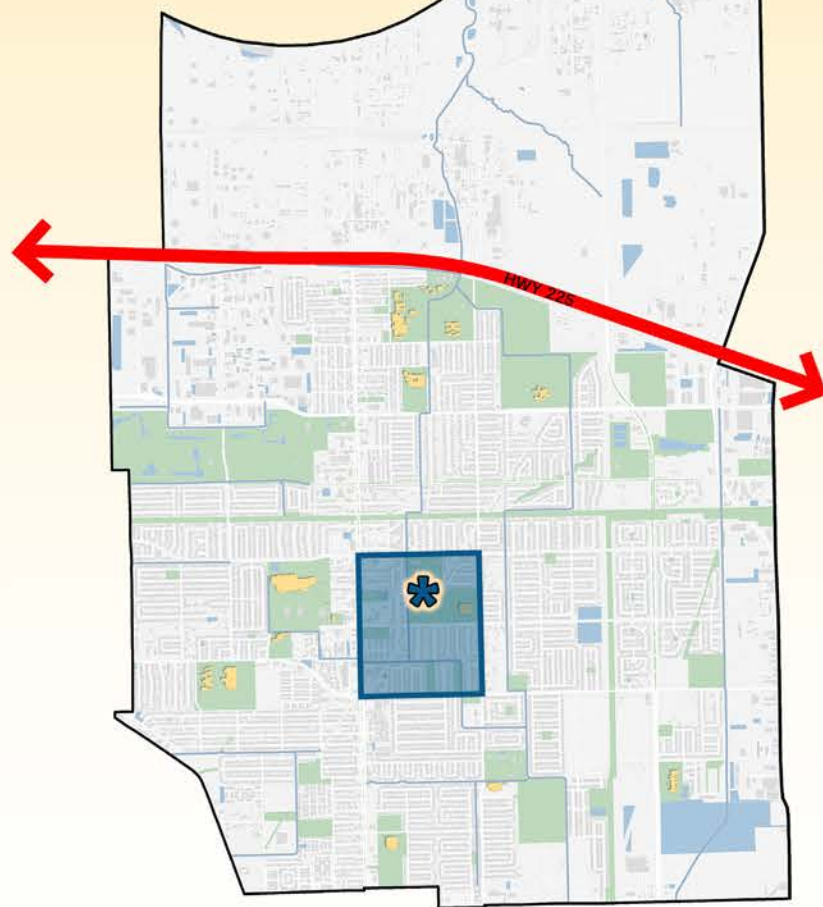
1837 The Survey
1845 The Survey
1850 The Survey
1855 The Survey
1860 The Survey
1865 The Survey
1870 The Survey
1875 The Survey
1880 The Survey
1885 The Survey
1890 The Survey
1895 The Survey
1900 The Survey
1905 The Survey
1910 The Survey
1915 The Survey
1920 The Survey
1925 The Survey
1930 The Survey
1935 The Survey
1940 The Survey
1945 The Survey
1950 The Survey
1955 The Survey
1960 The Survey
1965 The Survey
1970 The Survey
1975 The Survey
1980 The Survey
1985 The Survey
1990 The Survey
1995 The Survey
2000 The Survey
2005 The Survey
2010 The Survey
2015 The Survey
2020 The Survey

Simeon Henry West
filed his original plat on December 20, 1892 and subdivided it into parcels.
West was a statesman and a very respected citizen of Illinois. He was very aggressive in pursuing his dream and achieving his vision for creating the town of Deer Park. As settlers arrived from the north to build homes and establish farms, West built a hotel and a post office in 1893. He graded a road from West Avenue (Center Street) to Buffalo Bayou. West also granted a strip of land about 100 feet wide to build the first railroad through Deer Park for one dollar. He donated the land for the right-of-way to the Houston Ship Channel and, on October 3, 1902, he granted the deed to the United States of America.

CENTER DISTRICT - DOW PARK

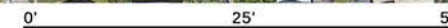
DOW PARK

Situated at the heart of the city, the Center District is anchored by Dow Park, a sprawling 40-acre expanse serving as the quintessential central park for both visitors and residents of Deer Park. Dow Park is home to vital community hubs such as the Aquatics Center, City Hall, and Community Center. The proposed renovations for Dow Park are poised to invigorate community engagement while seamlessly integrating natural elements into the landscape. The design ethos revolves around revitalizing existing park features and infusing innovative programming ideas throughout the park grounds, ensuring a vibrant and dynamic space for all.



TARGET SITE DESIGN DISTRICT

- CENTER DISTRICT
- DOW PARK
- PRINCIPAL ARTERIAL
- DEER PARK CITY BOUNDARY



1

OPEN-AIR PAVILION

USER GROUP

- Park Visitors
- Deer Park Residents
- General Public
- Entertainment Groups

EVENTS

- Concerts
- Movie in the Park
- Rent Pavilion for Parties

SQUARE FOOTAGE

- Large Pavilion: ~4,000 ft²
- Small Pavilion: ~900 ft²

2

PLAY AREA

USER GROUP

- Specifically Children
- Park Visitors
- Deer Park Residents
- General Public

ELEMENTS

- Playground
- Covered Canopy
- Splash Pad

SQUARE FOOTAGE

- Playground: ~6,000 ft²
- Small Pavilion: ~2,700 ft²

3

COMMUNITY CENTER

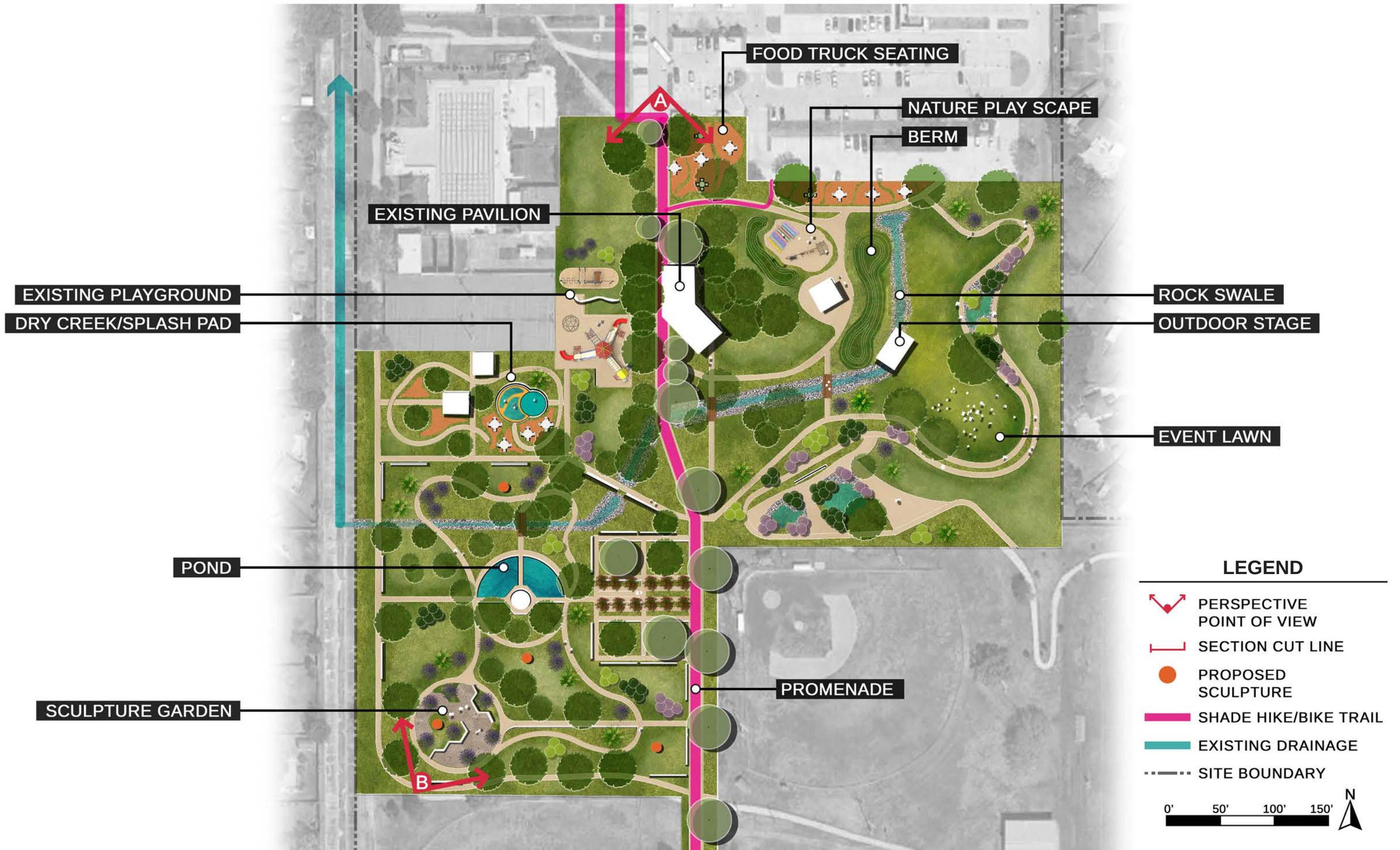
USER GROUP

- Park Visitors
- Deer Park Residents
- General Public

ELEMENTS

- Community Center Building
- Aquatics Center
- Tennis Courts

CENTER DISTRICT - DOW PARK



CENTER DISTRICT - DOW PARK

PERSPECTIVE A



CENTER DISTRICT - DOW PARK

PERSPECTIVE B



MOVING TOWARD A....



GREENER, HEALTHIER, AND HAPPIER CITY

DEER PARK

Comprehensive Master Plan for Park, Recreation, and Open Space: 2024 - 2034

