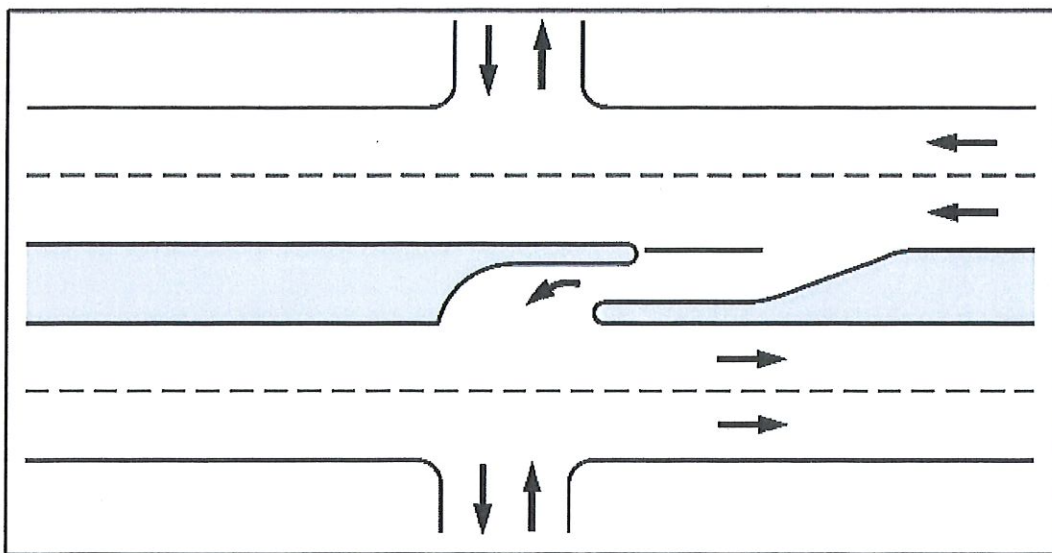




#### **Alternative 4: Add a non-traversable directional median on Center Street**

Alternative 4 proposed adding a directional non-traversable median, with a left turn bay, for the northbound left turn movement on Center Street. See example shown in **Figure 2**. Alternative 4 will not alter the existing traffic flow, therefore the existing LOS and delay shown in **Table 3** apply. This separator would prevent the eastbound left turn movement from Railroad Avenue, where the access becomes right-in/right-out only with just two conflict points.

This Alternative will require additional pavement on Center Street. The pavement would need to widen to 66-feet, from its existing 64-feet, with five 11-foot lanes (two southbound and three northbound) and 11-foot median/left turn lane.



**Figure 2: Left-Turn Ingress from One Direction**