

SIGN TYPE A

REMOVE AND DISPOSE OF EXISTING SIGN, CUT SUPPORT TO GRADE AND CAP, BREAK OUT PAD, BELOW GRADE FOUNDATION TO REMAIN IN PLACE NEW SIGN WILL NOT BE IN SAME LOCATION AS EXISTING

REMOVE AND DISPOSE

24'-0" +/-

9'-9"

EXISTING CONDITIONS

SIGN ELEVATION
SCALE: 3/8 " = 1'-0"

CLIENT APPROVAL

SIGNED:

DATE:

LANDLORD APPROVAL

SIGNED:

DATE:

SIGN ELEVATION: SIDE A
SCALE: 3/8 " = 1'-0"

UPDATED CONDITIONS

Page 1 of 5

SALES APPROVAL



2611 EL CAMINO • HOUSTON, TEXAS 77054
TEL: 713.863.0600 • FAX: 713.863.7585
www.NationalSigns.com

PROJECT: DEER PARK GOLF COURSE

LOCATION: 1600 GEORGIA STREET

CITY/STATE: DEER PARK, TX 77536

SALES REP: REBECCA BRUCE

DATE : 4.14.2017

DRAWN BY: JORGE G. QUALITY REVIEW

DRAWING#: PD17 28120 FABRICATION READY

THIS RENDERING IS THE PROPERTY OF NATIONAL SIGNS, LLC. ANY REPRODUCTION OR EXHIBITION OF THIS DRAWING IS STRICTLY PROHIBITED. ©2017 NATIONAL SIGNS, LLC. THIS RENDERING MAY NOT BE USED TO CONSTRUCT AND/OR BUILD WHAT IS DEPICTED HEREIN WITHOUT THE EXPRESS WRITTEN CONSENT OF NATIONAL SIGNS, LLC.



120 VOLT ELECTRICAL SERVICE

	SIGN	LED DISPLAY
ELECTRICAL LOAD:	2.25 Amps @120V	12.5 Amps @120V
20 AMP CIRCUIT(S):	1@120V	2 @120V

PROVIDE PRIMARY ELECTRICAL WITHIN 6' OF STREET END OF SIGN
CLIENT TO PROVIDE ALL PRIMARY ELECTRICAL SERVICES TO THE SIGN UNLESS OTHERWISE SPECIFIED

REVISIONS

C	6.28.17	Revised text	Jorge
D	7.10.17	Revised concrete pad	Jorge
E	7.19.17	Added engineering details	Jorge
F	1.26.18	Revised text	Jorge
G	2.13.18	Revised copy	Jorge

UL INSTALLATION REQUIREMENTS UL


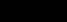






THIS SIGN IS INTENDED TO BE INSTALLED IN ACCORDANCE WITH THE REQUIREMENTS OF ARTICLE 600 OF THE NATIONAL ELECTRICAL CODE AND/OR OTHER APPLICABLE LOCAL CODES. THIS INCLUDES PROPER GROUNDING AND BONDING OF THE SIGN.

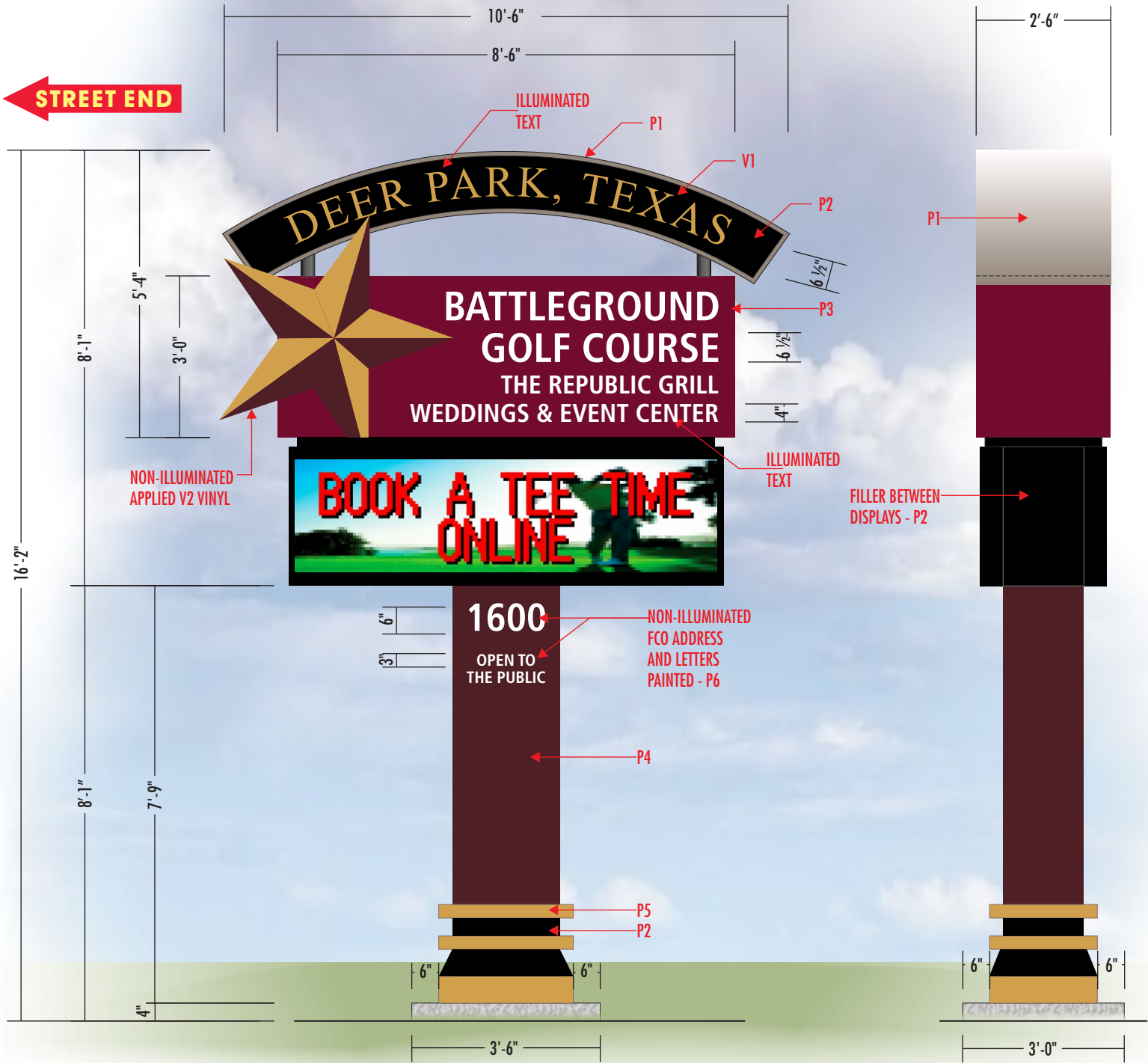
SIGN TYPE A

QUANTITY - 1

FABRICATE AND INSTALL DOUBLE FACED PYLON SIGN

- ALL ALUMINUM CONSTRUCTION:
- ARCHED CABINET: FINISH: P1 AND P2
 - TEXT: ROUTED INTO FACE AND BACKED WITH 3/16" THICK, #7328 WHITE ACRYLIC, WITH 1ST SURFACE APPLIED, V1 VINYL
 - SUPPORT PIPES: 3 1/2"Ø STANDARD STEEL PIPE W/4" O.D. X .226 THICK WALL FINISH: P2
- MAIN ID CABINET: FINISH: P3
- LOGO AND TEXT: ROUTED INTO FACE AND BACKED WITH 3/4" THICK CLEAR ACRYLIC, 3/8" TO EXTEND PAST FACE – 2nd SURFACE VINYL DIFFUSER APPLIED AND 1ST SURFACE APPLIED WHITE VINYL
- FLAT CUT OUT STAR: .125 ALUMINUM FLUSH MOUNTED TO CABINET FACES FINISH: P3 WITH APPLIED V2 VINYL
- REVEAL: 2" HIGH, FINISH: P2
- LED DISPLAYS:
- 40 X 150 FULL COLOR LED MATRIX (15.85mm PIXEL PITCH)
 - 2'-1" HIGH 7'-10" WIDE DISPLAY AREA
 - 2'-7" HIGH 8'-1" WIDE CABINET
 - FULLY PROGRAMMABLE TEXT & GRAPHICS
 - COMMUNICATIONS: ETHERNET BRIDGE RADIO
 - REQUIRED ONLY IF DISTANCE BETWEEN ETHERNET ROUTER AND LED DISPLAY IS OVER 250 FEET
 - OPEN LINE OF SIGN FROM TRANSMITTER TO SIGN REQUIRED
 - TEMPERATURE SENSOR IS NOT INCLUDED
- FILLER BETWEEN CABINETS: FINISH: P2
- POLE COVER: FINISH: P2 AND P3
- ACCENTS ON POLE COVER: FINISH: P5
- ADDRESS: 1/2" THICK FLAT CUT OUT ACRYLIC FLUSH MOUNTED TO POLE COVER, FINISH: P6
- CONCRETE PAD: 3" LARGER ALL AROUND THAN SECTION ABOVE. MIN 3" ABOVE GRADE/ MIN 3" BELOW GRADE
- SUPPORT: 8"Ø STANDARD STEEL PIPE W/8.63" O.D. X .322 THICK WALL
- FOUNDATION: 36" X 7'-4" DEEP CONCRETE PIER
- INTERNALLY ILLUMINATED
- ALUMINUM ANGLE FRAME
- NO VISIBLE FASTENERS ON FACE
- COUNTER SUNK SCREWS ON ENDS

FINISH SCHEDULE	
PAINT COLORS - SATIN FINISH	
	P1: PMS WARM GRAY 8C
	P2: MP BLACK
	P3: PTM DK BURGUNDY 220-68
	P4: PMS 504C BROWN
	P5: PMS 7407C GOLD
	P6: MP WHITE
VINYL COLORS	
	V1: TRANS. GOLD NUGGET 230-131
	V2: DTM GOLD PMS 7407C & BROWN PMS 504C
APPROVED BY: _____	



SIGN ELEVATION: **SIDE B**
SCALE: 3/8 " = 1'-0"



2611 EL CAMINO • HOUSTON, TEXAS 77054
TEL: 713.863.0600 • FAX: 713.863.7585
www.NationalSigns.com

PROJECT: DEER PARK GOLF COURSE

LOCATION: 1600 GEORGIA STREET

CITY/STATE: DEER PARK, TX 77536

SALES REP: REBECCA BRUCE

DATE : 4.14.2017

DRAWN BY: JORGE G. QUALITY REVIEW

DRAWING#: PD17 28120 FABRICATION READY

THIS RENDERING IS THE PROPERTY OF NATIONAL SIGNS, LLC. ANY REPRODUCTION OR EXHIBITION OF THIS DRAWING IS STRICTLY PROHIBITED. ©2017 NATIONAL SIGNS, LLC. THIS RENDERING MAY NOT BE USED TO CONSTRUCT AND/OR BUILD WHAT IS DEPICTED HEREIN WITHOUT THE EXPRESS WRITTEN CONSENT OF NATIONAL SIGNS, LLC.



120 VOLT ELECTRICAL SERVICE

	SIGN	LED DISPLAY
ELECTRICAL LOAD:	2.25 Amps @120V	12.5 Amps @120V
20 AMP CIRCUIT(S):	1@120V	2 @120V

PROVIDE PRIMARY ELECTRICAL WITHIN 6' OF STREET END OF SIGN
CLIENT TO PROVIDE ALL PRIMARY ELECTRICAL SERVICES TO THE SIGN UNLESS OTHERWISE SPECIFIED

REVISIONS

C	6.28.17	Revised text	Jorge
D	7.10.17	Revised concrete pad	Jorge
E	7.19.17	Added engineering details	Jorge
F	1.26.18	Revised text	Jorge
G	2.13.18	Revised copy	Jorge

UL INSTALLATION REQUIREMENTS
THIS SIGN IS INTENDED TO BE INSTALLED IN ACCORDANCE WITH THE REQUIREMENTS OF ARTICLE 600 OF THE NATIONAL ELECTRICAL CODE AND/OR OTHER APPLICABLE LOCAL CODES. THIS INCLUDES PROPER GROUNDING AND BONDING OF THE SIGN.

CLIENT APPROVAL

SIGNED:

DATE:

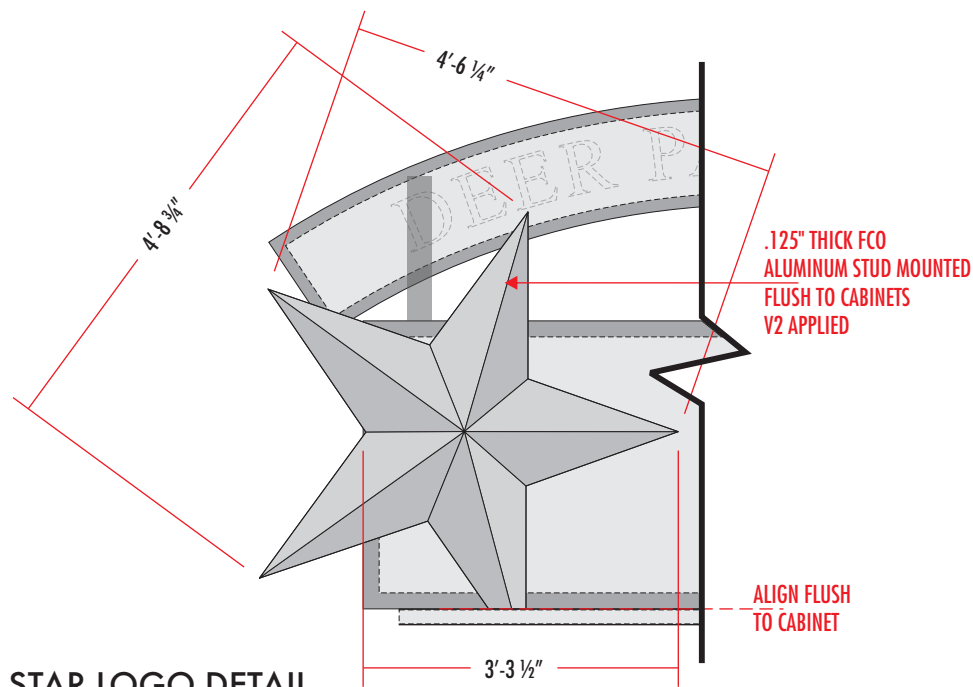
LANDLORD APPROVAL

SIGNED:

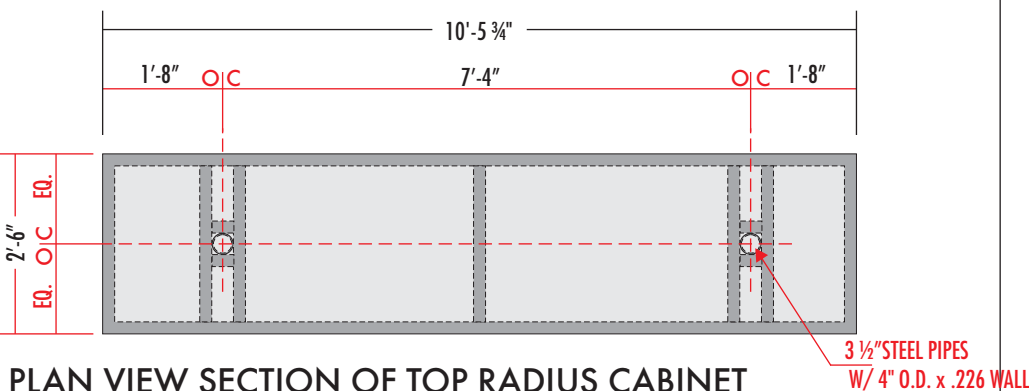
DATE:

SALES APPROVAL

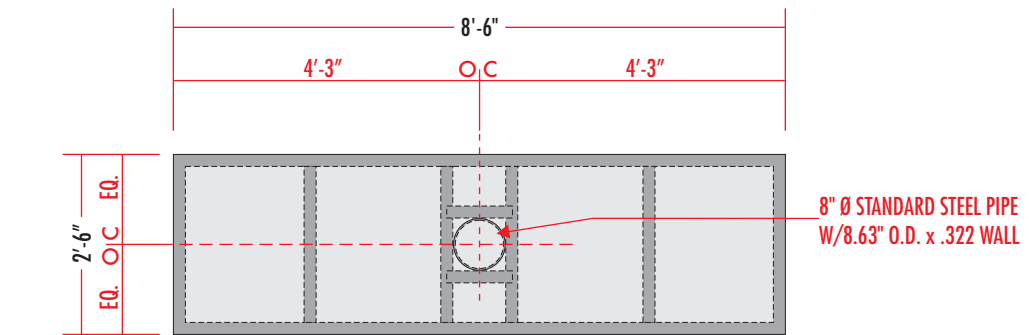
SIGN TYPE A



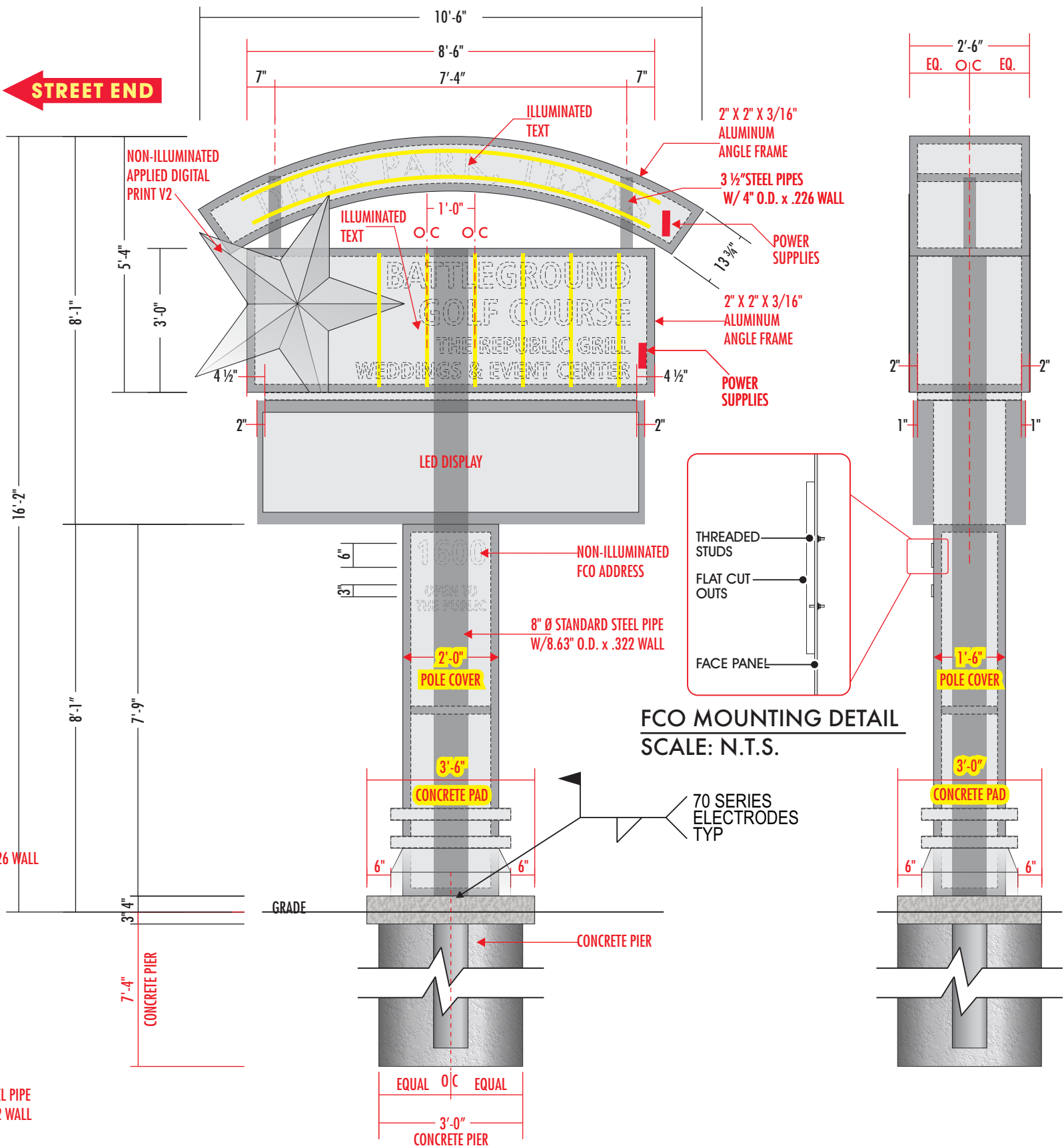
STAR LOGO DETAIL
SCALE: 1/2" = 1'-0"



PLAN VIEW SECTION OF TOP RADIUS CABINET
SCALE: 3/8" = 1'-0"



PLAN VIEW SECTION OF CENTER CABINET
SCALE: 3/8" = 1'-0"



SIGN ELEVATION: SIDE B
SCALE: 3/8" = 1'-0"



2611 EL CAMINO • HOUSTON, TEXAS 77054
TEL: 713.863.0600 • FAX: 713.863.7585
www.NationalSigns.com

PROJECT: DEER PARK GOLF COURSE

LOCATION: 1600 GEORGIA STREET

CITY/STATE: DEER PARK, TX 77536

SALES REP: REBECCA BRUCE

DATE : 4.14.2017

DRAWN BY: JORGE G. QUALITY REVIEW

DRAWING#: PD17 28120 FABRICATION READY

THIS RENDERING IS THE PROPERTY OF NATIONAL SIGNS, LLC. ANY REPRODUCTION OR EXHIBITION OF THIS DRAWING IS STRICTLY PROHIBITED. ©2017 NATIONAL SIGNS, LLC. THIS RENDERING MAY NOT BE USED TO CONSTRUCT AND/OR BUILD WHAT IS DEPICTED HEREIN WITHOUT THE EXPRESS WRITTEN CONSENT OF NATIONAL SIGNS, LLC.



120 VOLT ELECTRICAL SERVICE

	SIGN	LED DISPLAY
ELECTRICAL LOAD:	2.25 Amps @120V	12.5 Amps @120V
20 AMP CIRCUIT(S):	1 @120V	2 @120V

PROVIDE PRIMARY ELECTRICAL WITHIN 6' OF STREET END OF SIGN
CLIENT TO PROVIDE ALL PRIMARY ELECTRICAL SERVICES TO THE SIGN UNLESS OTHERWISE SPECIFIED

REVISIONS

C	6.28.17	Revised text	Jorge
D	7.10.17	Revised concrete pad	Jorge
E	7.19.17	Added engineering details	Jorge
F	1.26.18	Revised text	Jorge
G	2.13.18	Revised copy	Jorge

UL INSTALLATION REQUIREMENTS UL

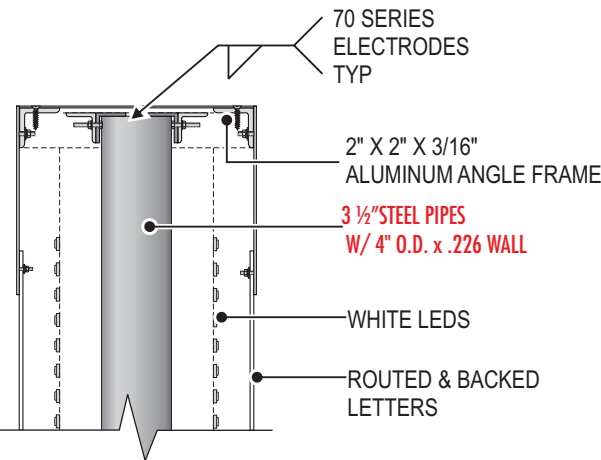
THIS SIGN IS INTENDED TO BE INSTALLED IN ACCORDANCE WITH THE REQUIREMENTS OF ARTICLE 600 OF THE NATIONAL ELECTRICAL CODE AND/OR OTHER APPLICABLE LOCAL CODES. THIS INCLUDES PROPER GROUNDING AND BONDING OF THE SIGN.

CLIENT APPROVAL SIGNED: DATE:

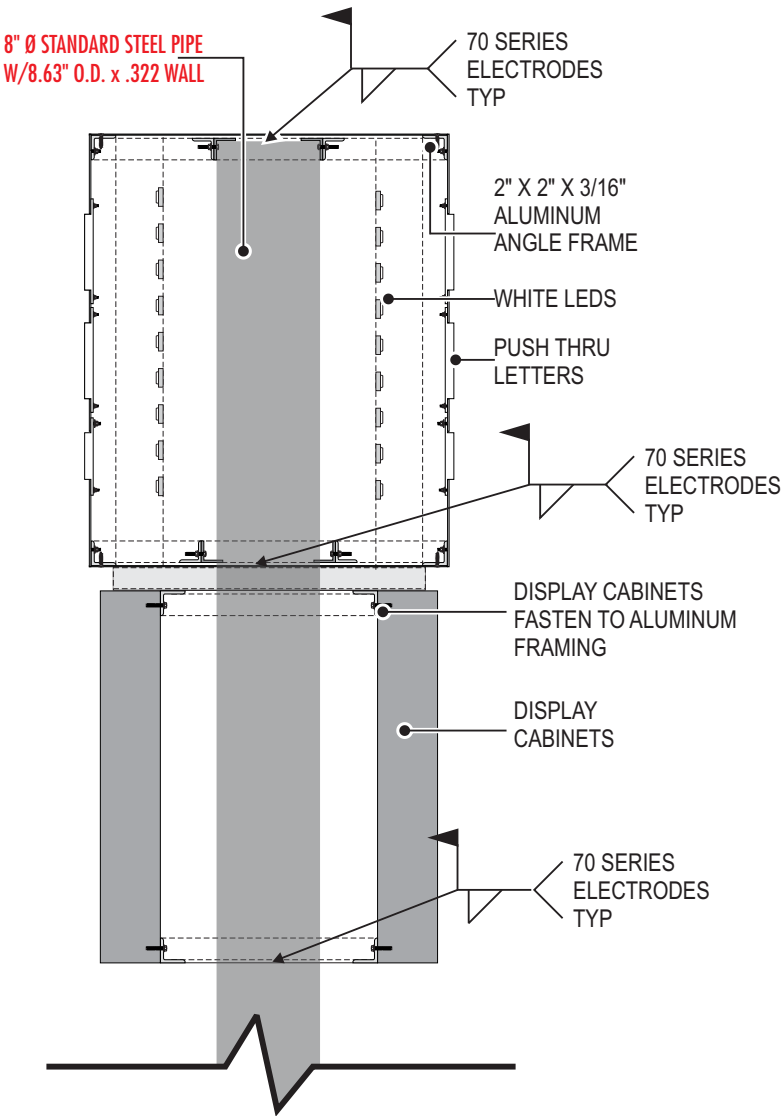
LANDLORD APPROVAL SIGNED: DATE:

SALES APPROVAL

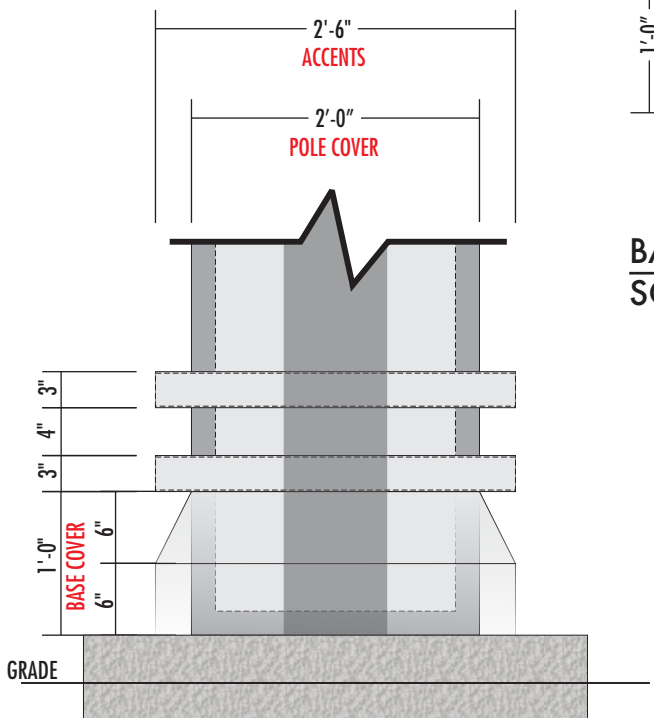
SIGN TYPE A



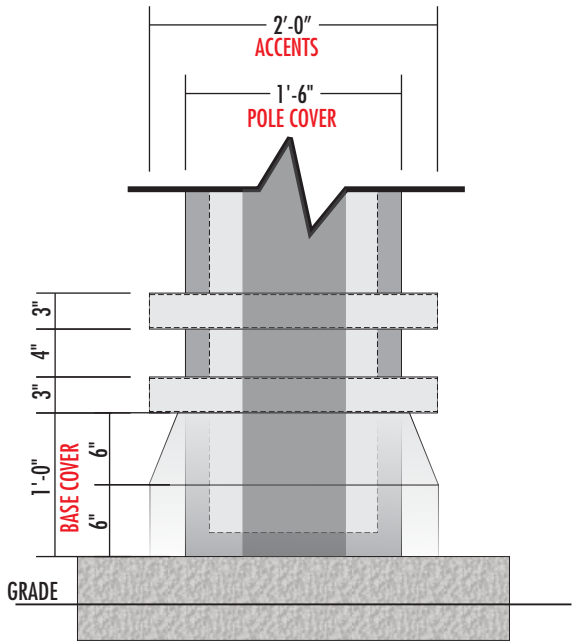
SECTION OF RADIUS ROOF
SCALE: NOT TO SCALE



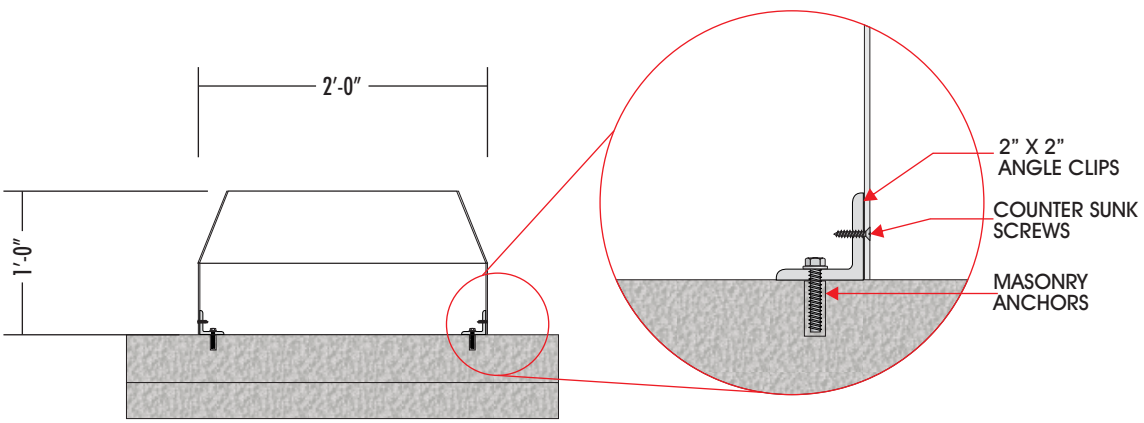
SECTION OF CABINET AND DISPLAYS
SCALE: 3/4" = 1'-0"



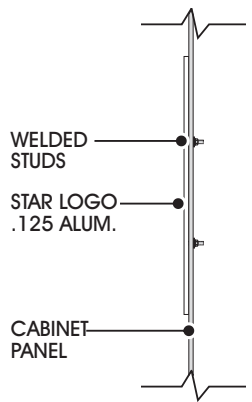
FRONT VIEW SECTION AT BASE
SCALE: 3/4" = 1'-0"



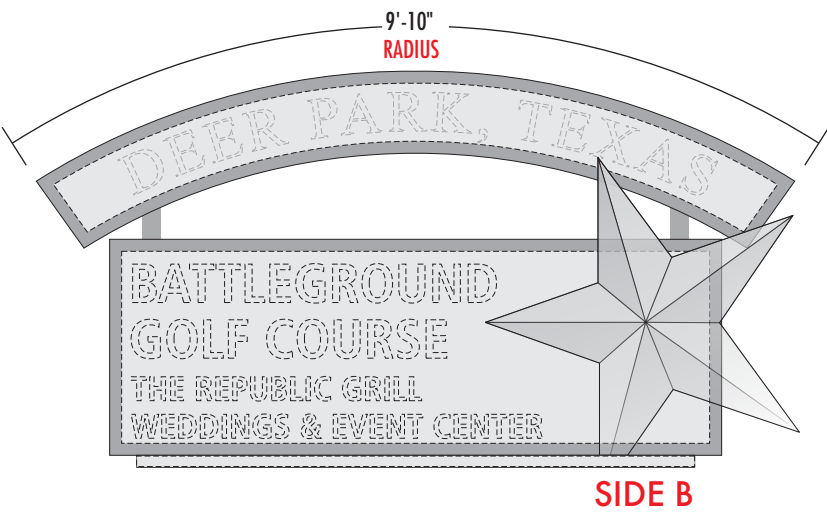
SIDE VIEW SECTION AT BASE
SCALE: 3/4" = 1'-0"



BASE COVER DETAIL
SCALE: 3/4" = 1'-0"



STAR LOGO MOUNTING DETAIL
SCALE: N.T.S.



SIGN RADIUS DETAIL
SCALE: 3/8" = 1'-0"



2611 EL CAMINO • HOUSTON, TEXAS 77054
TEL: 713.863.0600 • FAX: 713.863.7585
www.NationalSigns.com

PROJECT: DEER PARK GOLF COURSE

LOCATION: 1600 GEORGIA STREET

CITY/STATE: DEER PARK, TX 77536

SALES REP: REBECCA BRUCE

DATE : 4.14.2017

DRAWN BY: JORGE G. QUALITY REVIEW

DRAWING#: PD17 28120 FABRICATION READY

THIS RENDERING IS THE PROPERTY OF NATIONAL SIGNS, LLC. ANY REPRODUCTION OR EXHIBITION OF THIS DRAWING IS STRICTLY PROHIBITED. ©2017 NATIONAL SIGNS, LLC. THIS RENDERING MAY NOT BE USED TO CONSTRUCT AND/OR BUILD WHAT IS DEPICTED HEREIN WITHOUT THE EXPRESS WRITTEN CONSENT OF NATIONAL SIGNS, LLC.



120 VOLT ELECTRICAL SERVICE

	SIGN	LED DISPLAY
ELECTRICAL LOAD:	2.25 Amps @120V	12.5 Amps @120V
20 AMP CIRCUIT(S):	1 @120V	2 @120V

PROVIDE PRIMARY ELECTRICAL WITHIN 6' OF STREET END OF SIGN
CLIENT TO PROVIDE ALL PRIMARY ELECTRICAL SERVICES TO THE SIGN UNLESS OTHERWISE SPECIFIED

REVISIONS

C	6.28.17	Revised text	Jorge
D	7.10.17	Revised concrete pad	Jorge
E	7.19.17	Added engineering details	Jorge
F	1.26.18	Revised text	Jorge
G	2.13.18	Revised copy	Jorge

UL INSTALLATION REQUIREMENTS
THIS SIGN IS INTENDED TO BE INSTALLED IN ACCORDANCE WITH THE REQUIREMENTS OF ARTICLE 600 OF THE NATIONAL ELECTRICAL CODE AND/OR OTHER APPLICABLE LOCAL CODES. THIS INCLUDES PROPER GROUNDING AND BONDING OF THE SIGN.

CLIENT APPROVAL SIGNED: DATE:

LANDLORD APPROVAL SIGNED: DATE:

SALES APPROVAL



2611 EL CAMINO • HOUSTON, TEXAS 77054
TEL: 713.863.0600 • FAX: 713.863.7585
www.NationalSigns.com

PROJECT: DEER PARK GOLF COURSE

LOCATION: 1600 GEORGIA STREET

CITY/STATE: DEER PARK, TX 77536

SALES REP: REBECCA BRUCE

DATE : 4.14.2017

DRAWN BY: JORGE G. QUALITY REVIEW

DRAWING#: PD17 28120 FABRICATION READY

THIS RENDERING IS THE PROPERTY OF NATIONAL SIGNS, LLC. ANY REPRODUCTION OR EXHIBITION OF THIS DRAWING IS STRICTLY PROHIBITED. ©2017 NATIONAL SIGNS, LLC. THIS RENDERING MAY NOT BE USED TO CONSTRUCT AND/OR BUILD WHAT IS DEPICTED HEREIN WITHOUT THE EXPRESS WRITTEN CONSENT OF NATIONAL SIGNS, LLC.



120 VOLT ELECTRICAL SERVICE

	SIGN	LED DISPLAY
ELECTRICAL LOAD:		
20 AMP CIRCUIT(S):		

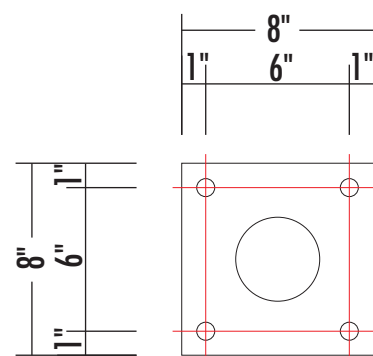
CLIENT TO PROVIDE ALL PRIMARY ELECTRICAL SERVICES TO THE SIGN UNLESS OTHERWISE SPECIFIED

REVISIONS

C	6.28.17	Revised text	Jorge
D	7.10.17	Revised concrete pad	Jorge
E	7.19.17	Added engineering details	Jorge
F	1.26.18	Revised text	Jorge
G	2.13.18	Revised copy	Jorge

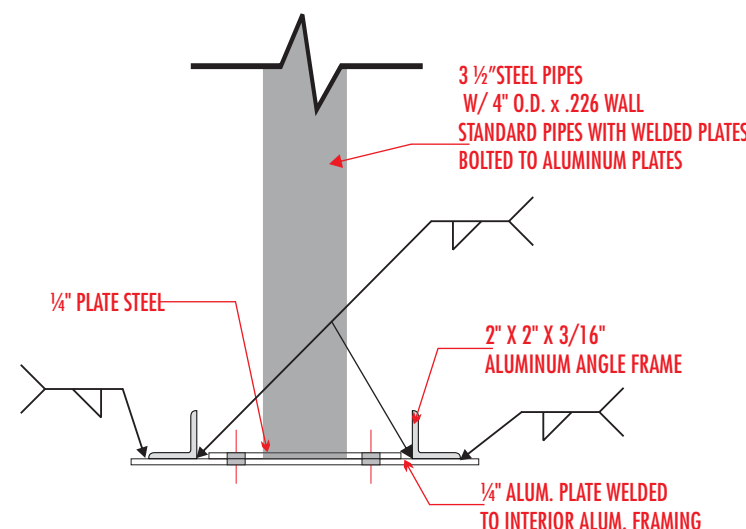
UL INSTALLATION REQUIREMENTS

THIS SIGN IS INTENDED TO BE INSTALLED IN ACCORDANCE WITH THE REQUIREMENTS OF ARTICLE 600 OF THE NATIONAL ELECTRICAL CODE AND/OR OTHER APPLICABLE LOCAL CODES. THIS INCLUDES PROPER GROUNDING AND BONDING OF THE SIGN.

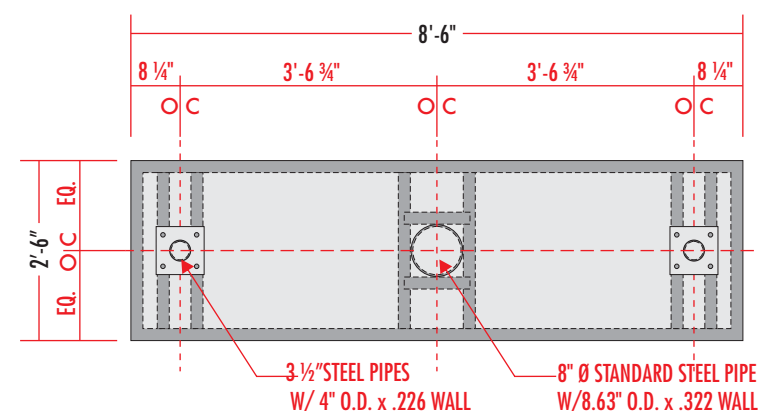


8" X 8" X 3/8" MATCH PLATE
W/ (4) 3/8" Ø THRU BOLTS
BOLTED TO ALUMINUM FRAMING

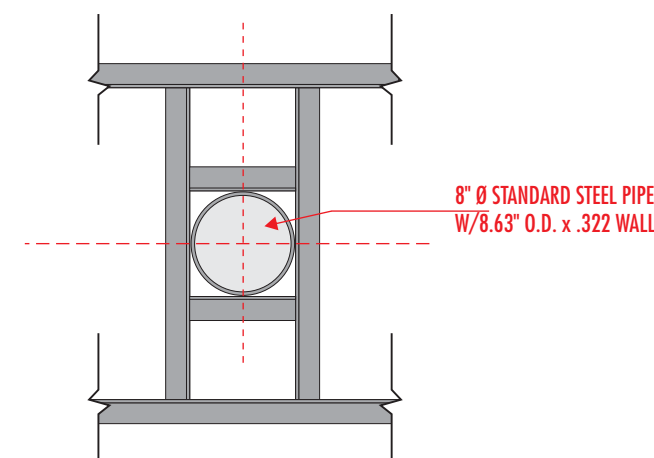
MATCH PLATE DETAIL
SCALE: 1 1/2" = 1'-0"



DETAIL
SCALE: 1 1/2" = 1'-0"



PLAN VIEW SECTION OF MAIN CABINET
SCALE: 3/8" = 1'-0"



SADDLE TYPE DETAIL OF MAIN ID CABINET
SCALE: 3/4" = 1'-0"

SIGN TYPE A

REMOVE AND DISPOSE OF EXISTING SIGN, CUT SUPPORT TO GRADE AND CAP, BREAK OUT PAD, BELOW GRADE FOUNDATION TO REMAIN IN PLACE NEW SIGN WILL NOT BE IN SAME LOCATION AS EXISTING

STREET END →



SIGN ELEVATION: **SIDE A** EXISTING CONDITIONS
SCALE: 3/8" = 1'-0"

CLIENT APPROVAL SIGNED: _____

DATE: _____

LANDLORD APPROVAL SIGNED: _____

DATE: _____

STREET END →



SIGN ELEVATION: **SIDE A** UPDATED CONDITIONS
SCALE: 3/8" = 1'-0"

SALES APPROVAL _____



2611 EL CAMINO • HOUSTON, TEXAS 77054
TEL: 713.863.0600 • FAX: 713.863.7585
www.NationalSigns.com

PROJECT: DEER PARK PARKS & RECREATION

LOCATION: 610 E. SAN AUGUSTINE

CITY/STATE: DEER PARK, TX 77536

SALES REP: REBECCA BRUCE

DATE : 4.20.2017

DRAWN BY: JORGE G. QUALITY REVIEW

DRAWING#: NS17 28122 FABRICATION READY

THIS RENDERING IS THE PROPERTY OF NATIONAL SIGNS, LLC. ANY REPRODUCTION OR EXHIBITION OF THIS DRAWING IS STRICTLY PROHIBITED. ©2017 NATIONAL SIGNS, LLC. THIS RENDERING MAY NOT BE USED TO CONSTRUCT AND/OR BUILD WHAT IS DEPICTED HEREIN WITHOUT THE EXPRESS WRITTEN CONSENT OF NATIONAL SIGNS, LLC.



120 VOLT ELECTRICAL SERVICE

	SIGN	LED DISPLAY
ELECTRICAL LOAD:		
20 AMP CIRCUIT(S):		

CLIENT TO PROVIDE ALL PRIMARY ELECTRICAL SERVICES TO THE SIGN UNLESS OTHERWISE SPECIFIED

REVISIONS

A	5.25.17 Revised layout Jorge

UL INSTALLATION REQUIREMENTS UL

THIS SIGN IS INTENDED TO BE INSTALLED IN ACCORDANCE WITH THE REQUIREMENTS OF ARTICLE 600 OF THE NATIONAL ELECTRICAL CODE AND/OR OTHER APPLICABLE LOCAL CODES. THIS INCLUDES PROPER GROUNDING AND BONDING OF THE SIGN.

SIGN TYPE A

QUANTITY - 1

FABRICATE AND INSTALL DOUBLE FACED PYLON SIGN

ALL ALUMINUM CONSTRUCTION:

- ARCHED CABINET: FINISH: P1 AND P2
- TEXT: ROUTED INTO FACE AND BACKED WITH 3/16" THICK, #7328 WHITE ACRYLIC, WITH 1ST SURFACE APPLIED, V1 VINYL
- SUPPORT PIPES: FINISH: P2
- MAIN ID CABINET: FINISH: P3
- LOGO AND TEXT: ROUTED INTO FACE AND BACKED WITH 3/4" THICK CLEAR ACRYLIC, 3/8" TO EXTEND PAST FACE – 2ND SURFACE VINYL DIFFUSER APPLIED AND 1ST SURFACE APPLIED WHITE VINYL
- FLAT CUT OUT STAR: .125 ALUMINUM FLUSH MOUNTED TO CABINET FACES FINISH: P3 WITH APPLIED V2 VINYL
- REVEAL: 2" HIGH, FINISH: P2
- LED DISPLAYS:
 - 40 X 150 FULL COLOR LED MATRIX (15.85mm PIXEL PITCH)
 - 2'-1" HIGH 7'-10" WIDE DISPLAY AREA
 - 2'-7" HIGH 8'-1" WIDE CABINET
 - FULLY PROGRAMMABLE TEXT & GRAPHICS
 - COMMUNICATIONS: ETHERNET BRIDGE RADIO
 - REQUIRED ONLY IF DISTANCE BETWEEN ETHERNET ROUTER AND LED DISPLAY IS OVER 250 FEET
 - OPEN LINE OF SIGN FROM TRANSMITTER TO SIGN REQUIRED
 - TEMPERATURE SENSOR IS NOT INCLUDED
- FILLER BETWEEN CABINETS: FINISH: P2
- POLE COVER: FINISH: P2 AND P3
- ACCENTS ON POLE COVER: FINISH: P5
- ADDRESS: 1/2" THICK FLAT CUT OUT ACRYLIC FLUSH MOUNTED TO POLE COVER, FINISH: P6
- CONCRETE PAD: 3" LARGER ALL AROUND THAN SECTION ABOVE. MIN 3" ABOVE GRADE/ MIN 3" BELOW GRADE
- SUPPORT: AS PER ENGINEER REQUIREMENTS
- FOUNDATION: AS PER ENGINEER REQUIREMENTS
- INTERNALLY ILLUMINATED
- ALUMINUM ANGLE FRAME
- NO VISIBLE FASTENERS ON FACE
- COUNTER SUNK SCREWS ON ENDS

FINISH SCHEDULE

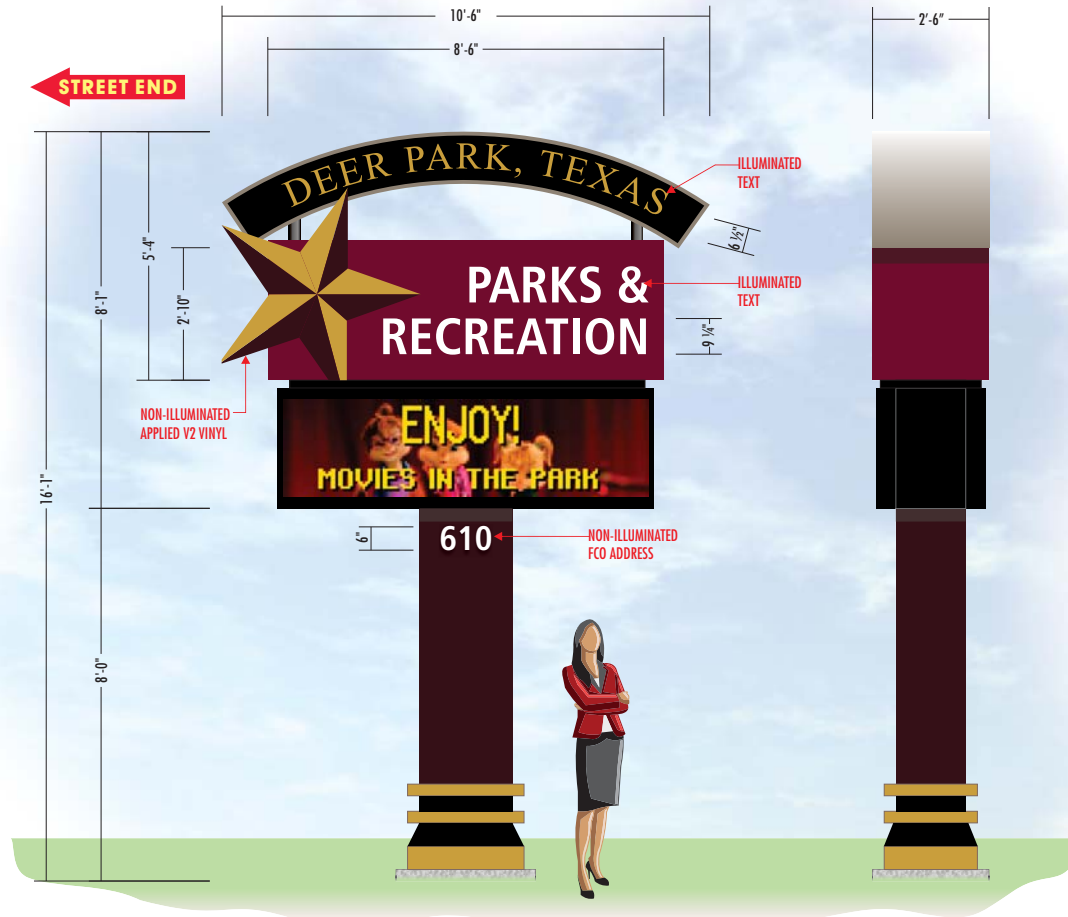
PAINT COLORS - SATIN FINISH

- P1: PMS WARM GRAY 8C
- P2: MP BLACK
- P3: PTM DK BURGUNDY 220-68
- P4: PMS 504C BROWN
- P5: PMS 7407C GOLD
- P6: MP WHITE

VINYL COLORS

- V1: TRANS. GOLD NUGGET 230-131
- V2: DTM GOLD PMS 7407C & BROWN PMS 504C
- V3: DIGITAL VINYL W/ LAMINATE

APPROVED BY: _____



SIGN ELEVATION: SIDE B

SCALE: 3/8" = 1'-0"



2611 EL CAMINO • HOUSTON, TEXAS 77054
TEL: 713.863.0600 • FAX: 713.863.7585
www.NationalSigns.com

PROJECT: DEER PARK PARKS & RECREATION

LOCATION: 610 E. SAN AUGUSTINE

CITY/STATE: DEER PARK, TX 77536

SALES REP: REBECCA BRUCE

DATE: 4.20.2017

DRAWN BY: JORGE G. QUALITY REVIEW

DRAWING#: NS17 28122 FABRICATION READY

THIS RENDERING IS THE PROPERTY OF NATIONAL SIGNS, LLC. ANY REPRODUCTION OR EXHIBITION OF THIS DRAWING IS STRICTLY PROHIBITED. ©2017 NATIONAL SIGNS, LLC. THIS RENDERING MAY NOT BE USED TO CONSTRUCT AND/OR BUILD WHAT IS DEPICTED HEREIN WITHOUT THE EXPRESS WRITTEN CONSENT OF NATIONAL SIGNS, LLC.



120 VOLT ELECTRICAL SERVICE

	SIGN	LED DISPLAY
ELECTRICAL LOAD:		
20 AMP CIRCUIT(S):		

CLIENT TO PROVIDE ALL PRIMARY ELECTRICAL SERVICES TO THE SIGN UNLESS OTHERWISE SPECIFIED

REVISIONS

A	5.25.17 Revised layout Jorge

UL INSTALLATION REQUIREMENTS UL

THIS SIGN IS INTENDED TO BE INSTALLED IN ACCORDANCE WITH THE REQUIREMENTS OF ARTICLE 600 OF THE NATIONAL ELECTRICAL CODE AND/OR OTHER APPLICABLE LOCAL CODES. THIS INCLUDES PROPER GROUNDING AND BONDING OF THE SIGN.

CLIENT APPROVAL SIGNED: _____

DATE: _____

LANDLORD APPROVAL SIGNED: _____

DATE: _____

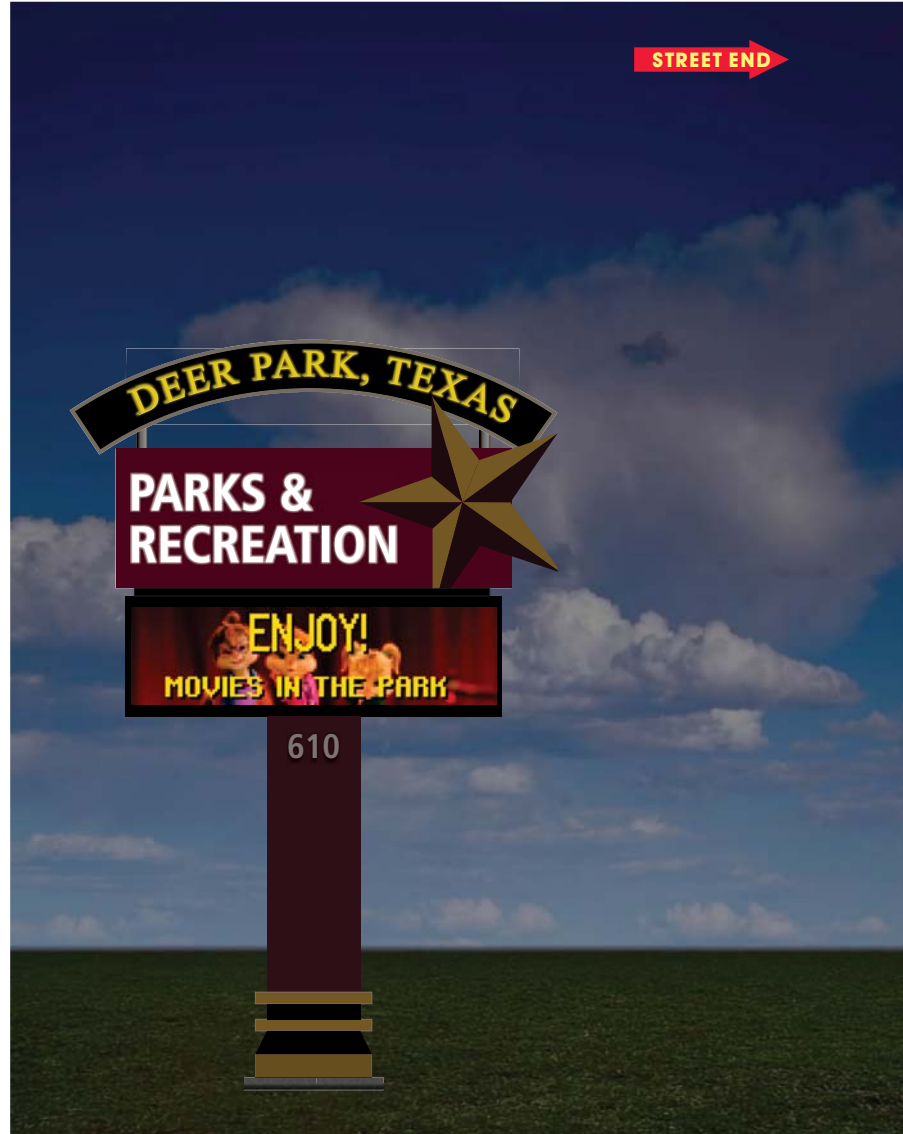
Page 2 of 3

SALES APPROVAL _____

SIGN TYPE A



SIGN ELEVATION: SIDE A
SCALE: 3/8" = 1'-0"



SIGN NIGHT VIEW ELEVATION
SCALE: 3/8" = 1'-0"



2611 EL CAMINO • HOUSTON, TEXAS 77054
TEL: 713.863.0600 • FAX: 713.863.7585
www.NationalSigns.com

PROJECT: DEER PARK PARKS & RECREATION

LOCATION: 610 E. SAN AUGUSTINE

CITY/STATE: DEER PARK, TX 77536

SALES REP: REBECCA BRUCE

DATE : 4.20.2017

DRAWN BY: JORGE G. QUALITY REVIEW

DRAWING#: NS17 28122 FABRICATION READY

THIS RENDERING IS THE PROPERTY OF NATIONAL SIGNS, LLC. ANY REPRODUCTION OR EXHIBITION OF THIS DRAWING IS STRICTLY PROHIBITED. ©2017 NATIONAL SIGNS, LLC. THIS RENDERING MAY NOT BE USED TO CONSTRUCT AND/OR BUILD WHAT IS DEPICTED HEREIN WITHOUT THE EXPRESS WRITTEN CONSENT OF NATIONAL SIGNS, LLC.



120 VOLT ELECTRICAL SERVICE

	SIGN	LED DISPLAY
ELECTRICAL LOAD:		
20 AMP CIRCUIT(S):		

CLIENT TO PROVIDE ALL PRIMARY ELECTRICAL SERVICES TO THE SIGN UNLESS OTHERWISE SPECIFIED

REVISIONS

A	5.25.17 Revised layout Jorge

UL INSTALLATION REQUIREMENTS

THIS SIGN IS INTENDED TO BE INSTALLED IN ACCORDANCE WITH THE REQUIREMENTS OF ARTICLE 600 OF THE NATIONAL ELECTRICAL CODE AND/OR OTHER APPLICABLE LOCAL CODES. THIS INCLUDES PROPER GROUNDING AND BONDING OF THE SIGN.

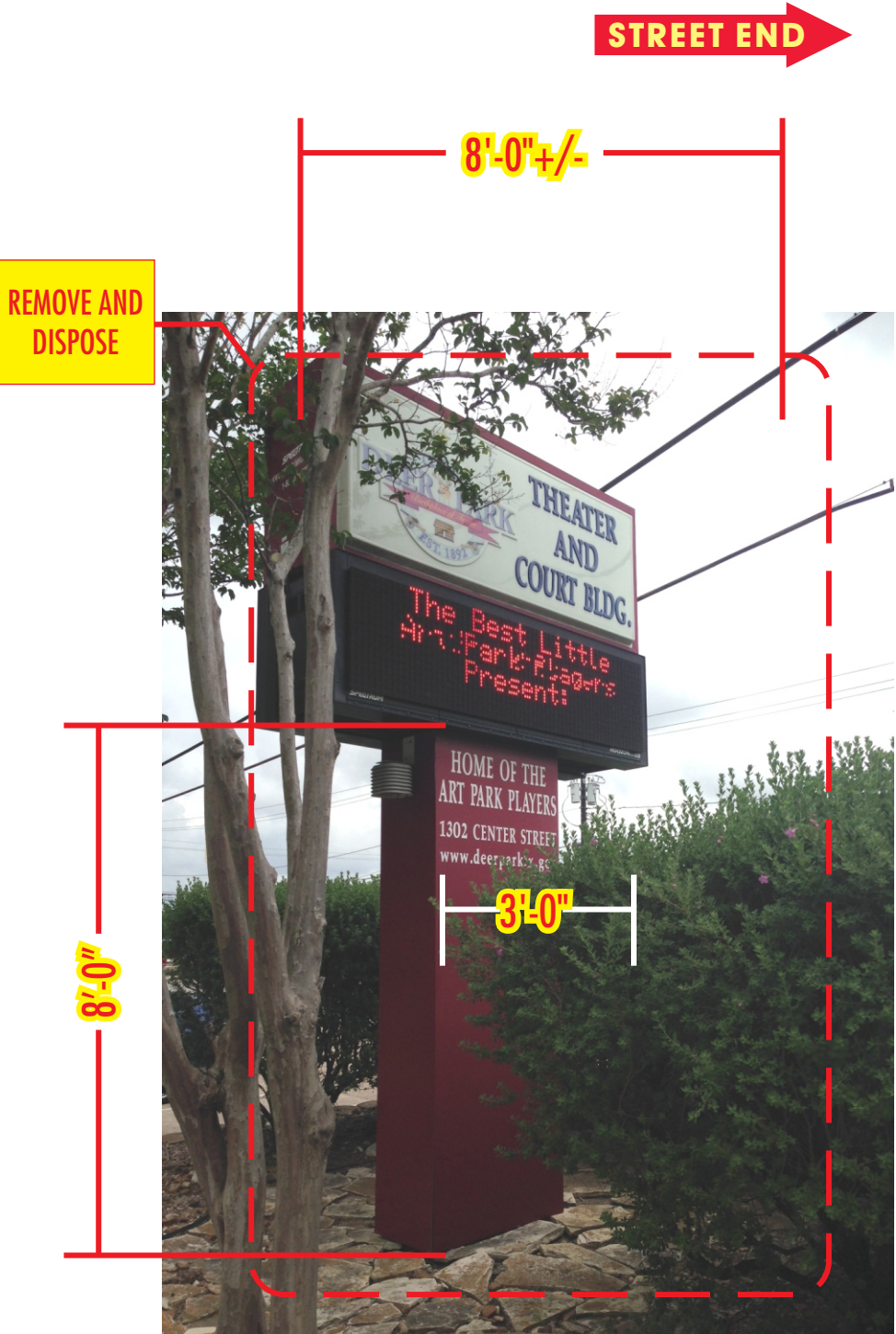
CLIENT APPROVAL SIGNED: DATE:

LANDLORD APPROVAL SIGNED: DATE:

SALES APPROVAL

SIGN TYPE A

REMOVE AND DISPOSE OF EXISTING SIGN, CUT SUPPORT TO GRADE AND CAP, BREAK OUT PAD, BELOW GRADE FOUNDATION TO REMAIN IN PLACE NEW SIGN WILL NOT BE IN SAME LOCATION AS EXISTING



SIGN ELEVATION: **SIDE A** EXISTING CONDITIONS
SCALE: 3/8 " = 1'-0"

CLIENT APPROVAL SIGNED: DATE:



SIGN ELEVATION: **SIDE A** UPDATED CONDITIONS
SCALE: 3/8 " = 1'-0"

LANDLORD APPROVAL SIGNED: DATE:

Page 1 of 5
SALES APPROVAL



2611 EL CAMINO • HOUSTON, TEXAS 77054
TEL: 713.863.0600 • FAX: 713.863.7585
www.NationalSigns.com

PROJECT: DEER PARK THEATER & COURT BLDG
LOCATION: 1302 CENTER STREET
CITY/STATE: DEERPARK, TX 77536
SALES REP: REBECCA BRUCE
DATE : 4.19.2017
DRAWN BY: JORGE G. QUALITY REVIEW
DRAWING#: PD17 28121 FABRICATION READY

THIS RENDERING IS THE PROPERTY OF NATIONAL SIGNS, LLC. ANY REPRODUCTION OR EXHIBITION OF THIS DRAWING IS STRICTLY PROHIBITED. ©2017 NATIONAL SIGNS, LLC. THIS RENDERING MAY NOT BE USED TO CONSTRUCT AND/OR BUILD WHAT IS DEPICTED HEREIN WITHOUT THE EXPRESS WRITTEN CONSENT OF NATIONAL SIGNS, LLC.



120 VOLT ELECTRICAL SERVICE			
		SIGN	LED DISPLAY
ELECTRICAL LOAD:		2.1 Amps @120V	12.5 Amps @120V
20 AMP CIRCUIT(S):		1 @120V	2 @120V
PROVIDE PRIMARY ELECTRICAL WITHIN 6' OF STREET END OF SIGN CLIENT TO PROVIDE ALL PRIMARY ELECTRICAL SERVICES TO THE SIGN UNLESS OTHERWISE SPECIFIED			
REVISIONS			
A	5.25.17 Revised layout	Jorge	
B	6.13.17 Removed Option 1	Jorge	
C	7.19.17 Added engineering info.	Jorge	
D	2.13.18 Revised copy	Jorge	









UL INSTALLATION REQUIREMENTS UL
THIS SIGN IS INTENDED TO BE INSTALLED IN ACCORDANCE WITH THE REQUIREMENTS OF ARTICLE 600 OF THE NATIONAL ELECTRICAL CODE AND/OR OTHER APPLICABLE LOCAL CODES. THIS INCLUDES PROPER GROUNDING AND BONDING OF THE SIGN.

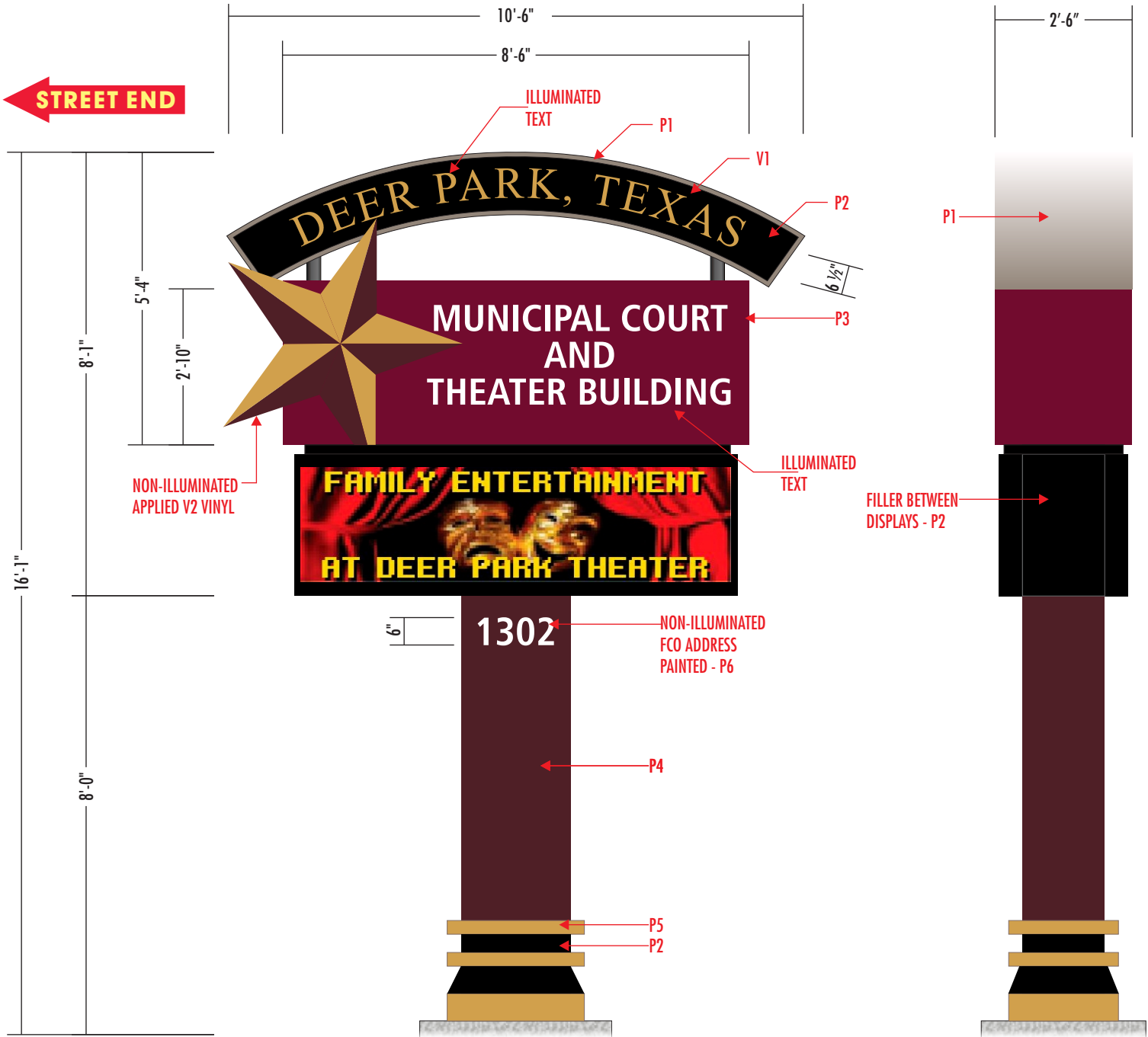
SIGN TYPE A

QUANTITY - 1

FABRICATE AND INSTALL DOUBLE FACED PYLON SIGN

- ALL ALUMINUM CONSTRUCTION:
- ARCHED CABINET: FINISH: P1 AND P2
 - TEXT: ROUTED INTO FACE AND BACKED WITH 3/16" THICK, #7328 WHITE ACRYLIC, WITH 1ST SURFACE APPLIED, V1 VINYL
 - SUPPORT PIPES: 3 1/2"Ø STANDARD STEEL PIPE W/4" O.D. X .226 THICK WALL FINISH: P2
-
- MAIN ID CABINET: FINISH: P3
 - LOGO AND TEXT: ROUTED INTO FACE AND BACKED WITH 3/4" THICK CLEAR ACRYLIC, 3/8" TO EXTEND PAST FACE – 2nd SURFACE VINYL DIFFUSER APPLIED AND 1ST SURFACE APPLIED WHITE VINYL
 - FLAT CUT OUT STAR: .125 ALUMINUM FLUSH MOUNTED TO CABINET FACES FINISH: P3 WITH APPLIED V2 VINYL
-
- REVEAL: 2" HIGH, FINISH: P2
-
- LED DISPLAYS:
 - 40 X 150 FULL COLOR LED MATRIX (15.85mm PIXEL PITCH)
 - 2'-1" HIGH 7'-10" WIDE DISPLAY AREA
 - 2'-7" HIGH 8'-1" WIDE CABINET
 - FULLY PROGRAMMABLE TEXT & GRAPHICS
 - COMMUNICATIONS: ETHERNET BRIDGE RADIO
 - REQUIRED ONLY IF DISTANCE BETWEEN ETHERNET ROUTER AND LED DISPLAY IS OVER 250 FEET
 - OPEN LINE OF SIGN FROM TRANSMITTER TO SIGN REQUIRED
 - TEMPERATURE SENSOR IS NOT INCLUDED
-
- FILLER BETWEEN CABINETS: FINISH: P2
-
- POLE COVER: FINISH: P2 AND P3
 - ACCENTS ON POLE COVER: FINISH: P5
 - ADDRESS: 1/2" THICK FLAT CUT OUT ACRYLIC FLUSH MOUNTED TO POLE COVER, FINISH: P6
-
- CONCRETE PAD: 3" LARGER ALL AROUND THAN SECTION ABOVE. MIN 3" ABOVE GRADE/ MIN 3" BELOW GRADE
 - SUPPORT: 8"Ø STANDARD STEEL PIPE W/8.63" O.D. X .322 THICK WALL
 - FOUNDATION: 36" X 7'-4" DEEP CONCRETE PIER
-
- INTERNALLY ILLUMINATED
 - ALUMINUM ANGLE FRAME
 - NO VISIBLE FASTENERS ON FACE
 - COUNTER SUNK SCREWS ON ENDS

FINISH SCHEDULE	
PAINT COLORS - SATIN FINISH	
	P1: PMS WARM GRAY 8C
	P2: MP BLACK
	P3: PTM DK BURGUNDY 220-68
	P4: PMS 504C BROWN
	P5: PMS 7407C GOLD
	P6: MP WHITE
VINYL COLORS	
	V1: TRANS. GOLD NUGGET 230-131
	V2: DTM GOLD PMS 7407C & BROWN PMS 504C
APPROVED BY: _____	



SIGN ELEVATION: **SIDE B**
SCALE: 3/8 " = 1'-0"

Page 2 of 5



2611 EL CAMINO • HOUSTON, TEXAS 77054
TEL: 713.863.0600 • FAX: 713.863.7585
www.NationalSigns.com

PROJECT: DEER PARK THEATER & COURT BLDG

LOCATION: 1302 CENTER STREET

CITY/STATE: DEERPARK, TX 77536

SALES REP: REBECCA BRUCE

DATE : 4.19.2017

DRAWN BY: JORGE G. QUALITY REVIEW

DRAWING#: PD17 28121 FABRICATION READY

THIS RENDERING IS THE PROPERTY OF NATIONAL SIGNS, LLC. ANY REPRODUCTION OR EXHIBITION OF THIS DRAWING IS STRICTLY PROHIBITED. ©2017 NATIONAL SIGNS, LLC. THIS RENDERING MAY NOT BE USED TO CONSTRUCT AND/OR BUILD WHAT IS DEPICTED HEREIN WITHOUT THE EXPRESS WRITTEN CONSENT OF NATIONAL SIGNS, LLC.



120 VOLT ELECTRICAL SERVICE

	SIGN	LED DISPLAY
ELECTRICAL LOAD:	2.1 Amps @120V	12.5 Amps @120V
20 AMP CIRCUIT(S):	1 @120V	2 @120V

PROVIDE PRIMARY ELECTRICAL WITHIN 6' OF STREET END OF SIGN
CLIENT TO PROVIDE ALL PRIMARY ELECTRICAL SERVICES TO THE SIGN UNLESS OTHERWISE SPECIFIED

REVISIONS

A	5.25.17 Revised layout	Jorge
B	6.13.17 Removed Option 1	Jorge
C	7.19.17 Added engineering info.	Jorge
D	2.13.18 Revised copy	Jorge

UL INSTALLATION REQUIREMENTS UL

THIS SIGN IS INTENDED TO BE INSTALLED IN ACCORDANCE WITH THE REQUIREMENTS OF ARTICLE 600 OF THE NATIONAL ELECTRICAL CODE AND/OR OTHER APPLICABLE LOCAL CODES. THIS INCLUDES PROPER GROUNDING AND BONDING OF THE SIGN.

CLIENT APPROVAL

SIGNED:

DATE:

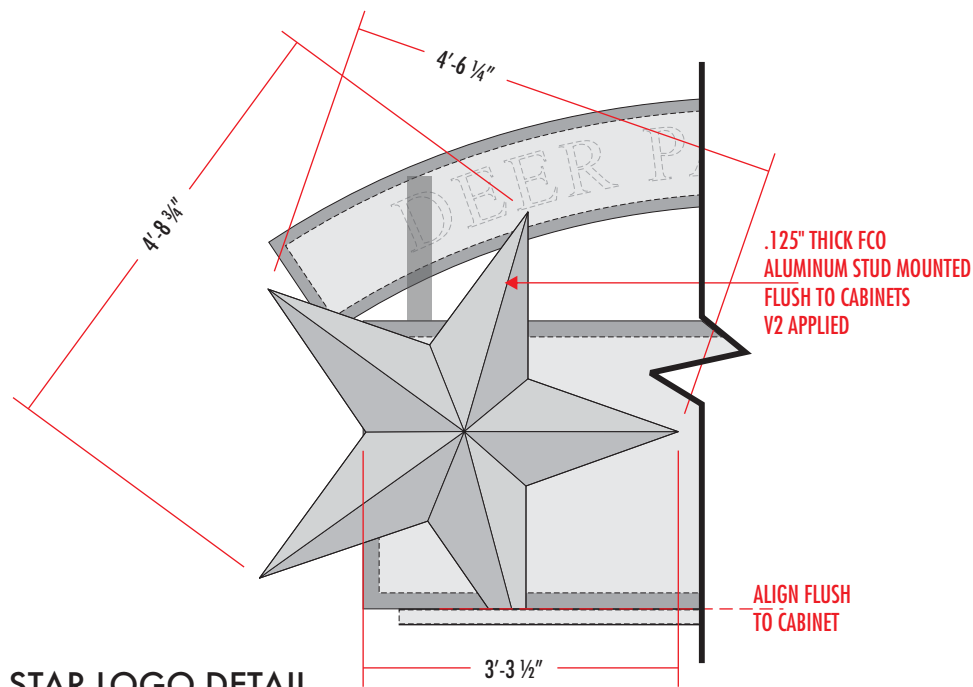
LANDLORD APPROVAL

SIGNED:

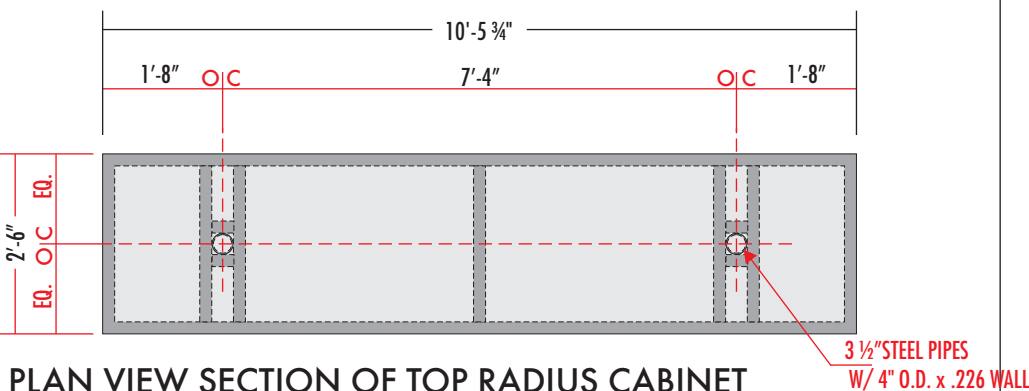
DATE:

SALES APPROVAL

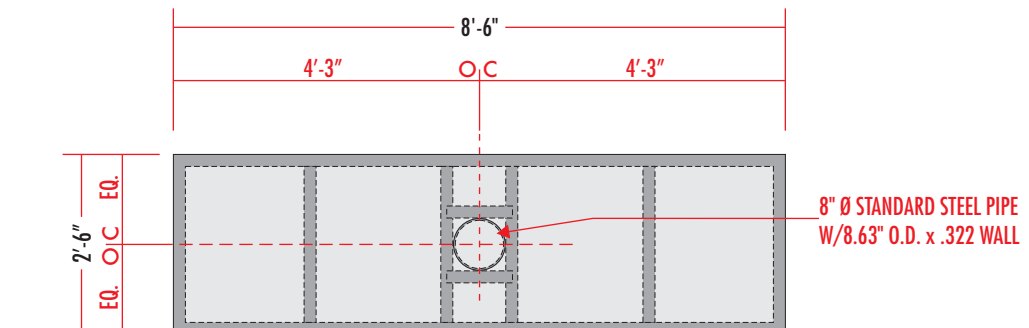
SIGN TYPE A



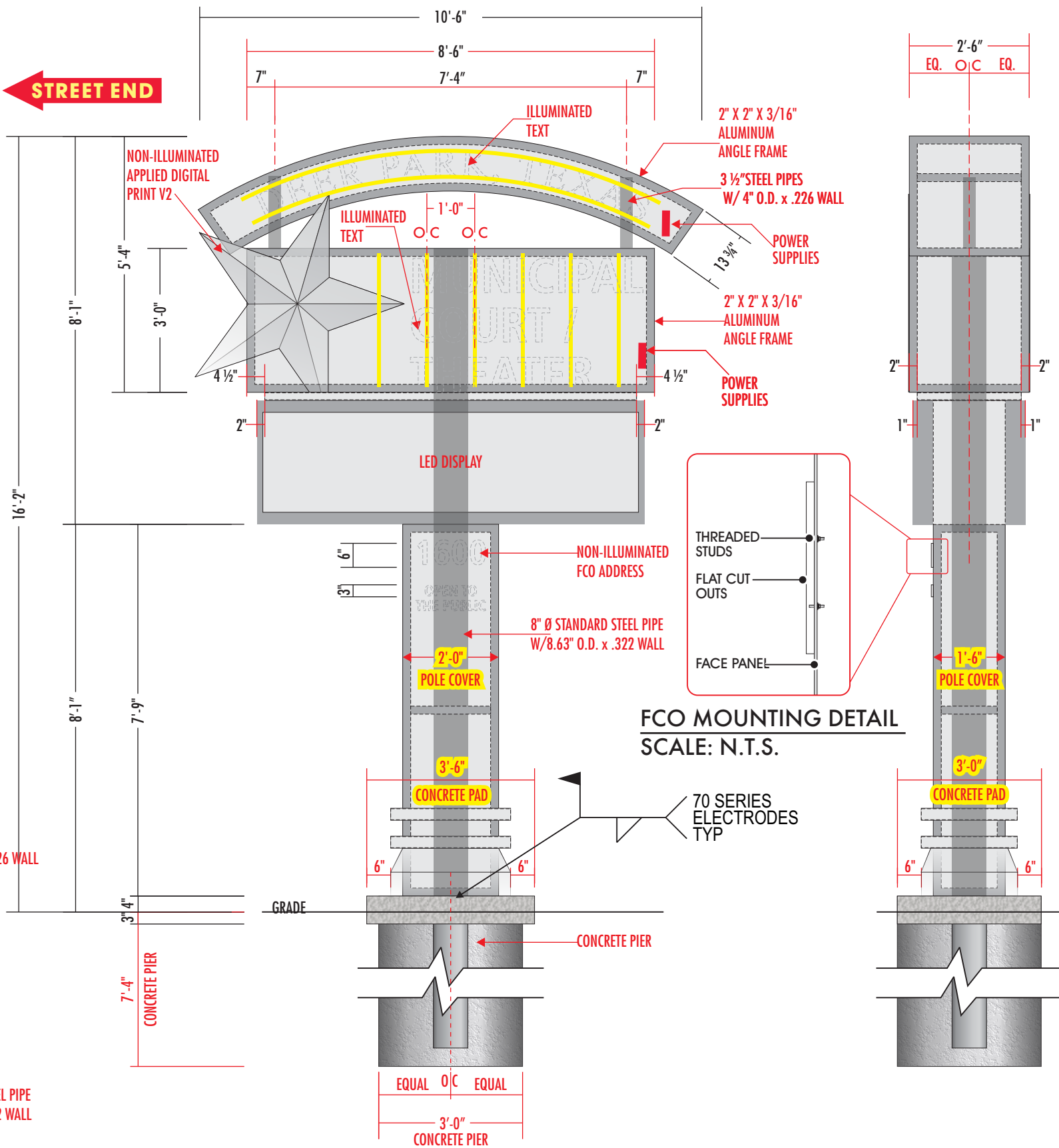
STAR LOGO DETAIL
SCALE: 1/2" = 1'-0"



PLAN VIEW SECTION OF TOP RADIUS CABINET
SCALE: 3/8" = 1'-0"



PLAN VIEW SECTION OF CENTER CABINET
SCALE: 3/8" = 1'-0"



2611 EL CAMINO • HOUSTON, TEXAS 77054
TEL: 713.863.0600 • FAX: 713.863.7585
www.NationalSigns.com

PROJECT: DEER PARK THEATER & COURT BLDG
LOCATION: 1302 CENTER STREET
CITY/STATE: DEERPARK, TX 77536
SALES REP: REBECCA BRUCE
DATE : 4.19.2017
DRAWN BY: JORGE G. QUALITY REVIEW
DRAWING#: PD17 28121 FABRICATION READY

THIS RENDERING IS THE PROPERTY OF NATIONAL SIGNS, LLC. ANY REPRODUCTION OR EXHIBITION OF THIS DRAWING IS STRICTLY PROHIBITED. ©2017 NATIONAL SIGNS, LLC. THIS RENDERING MAY NOT BE USED TO CONSTRUCT AND/OR BUILD WHAT IS DEPICTED HEREIN WITHOUT THE EXPRESS WRITTEN CONSENT OF NATIONAL SIGNS, LLC.

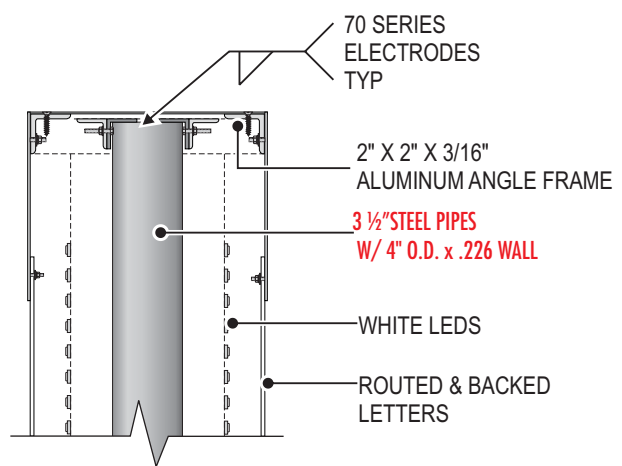


120 VOLT ELECTRICAL SERVICE			
		SIGN	LED DISPLAY
ELECTRICAL LOAD:		2.1 Amps @120V	12.5 Amps @120V
20 AMP CIRCUIT(S):		1 @120V	2 @120V
PROVIDE PRIMARY ELECTRICAL WITHIN 6' OF STREET END OF SIGN CLIENT TO PROVIDE ALL PRIMARY ELECTRICAL SERVICES TO THE SIGN UNLESS OTHERWISE SPECIFIED			

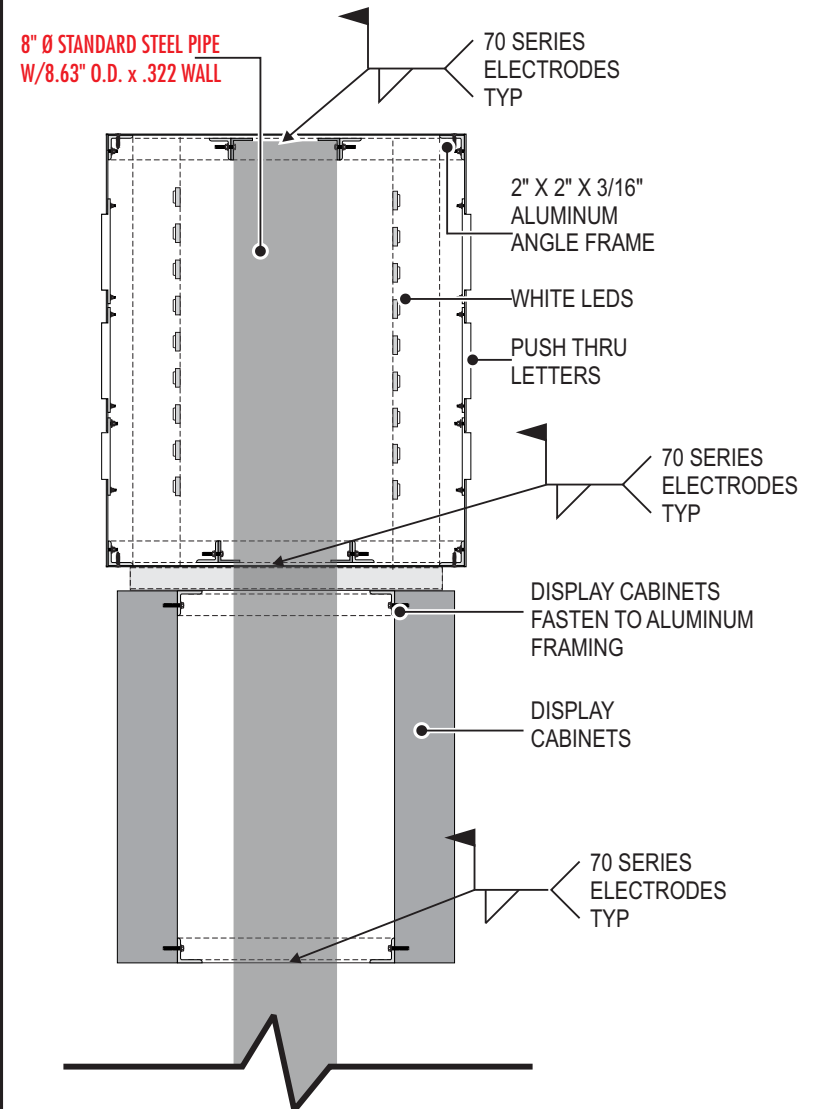
REVISIONS		
A	5.25.17 Revised layout	Jorge
B	6.13.17 Removed Option 1	Jorge
C	7.19.17 Added engineering info.	Jorge
D	2.13.18 Revised copy	Jorge

UL INSTALLATION REQUIREMENTS
THIS SIGN IS INTENDED TO BE INSTALLED IN ACCORDANCE WITH THE REQUIREMENTS OF ARTICLE 600 OF THE NATIONAL ELECTRICAL CODE AND/OR OTHER APPLICABLE LOCAL CODES. THIS INCLUDES PROPER GROUNDING AND BONDING OF THE SIGN.

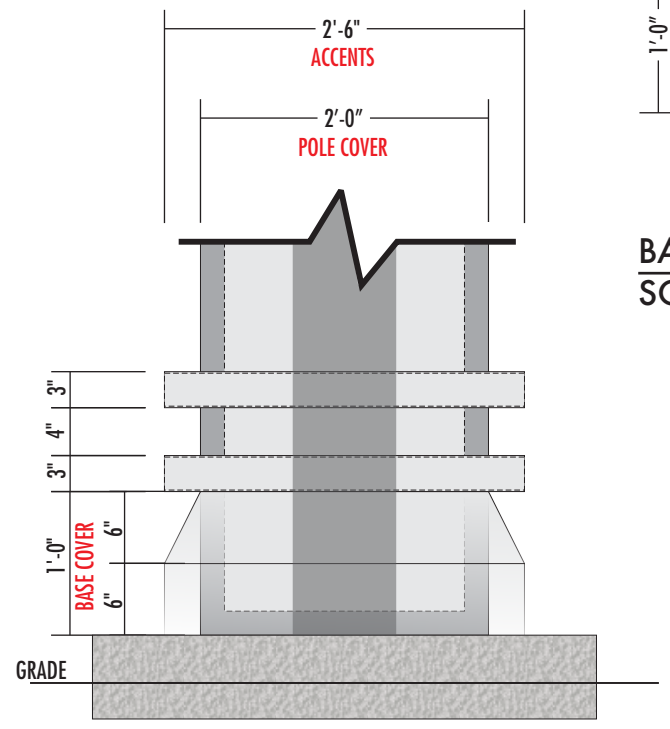
SIGN TYPE A



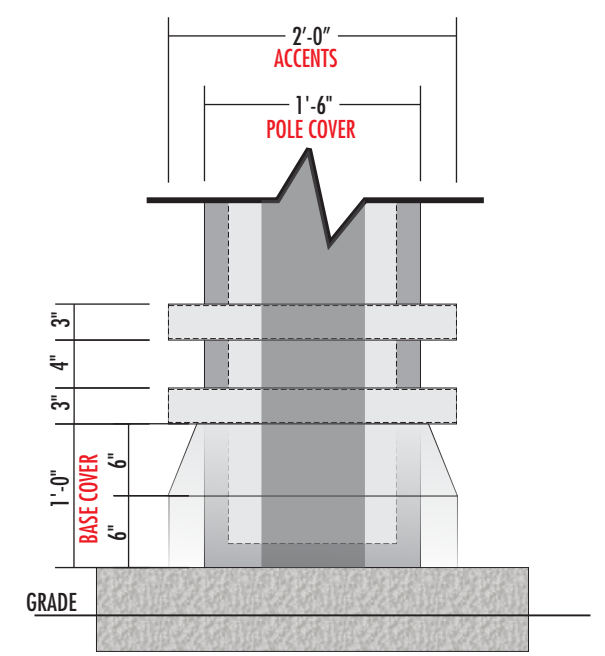
SECTION OF RADIUS ROOF
SCALE: NOT TO SCALE



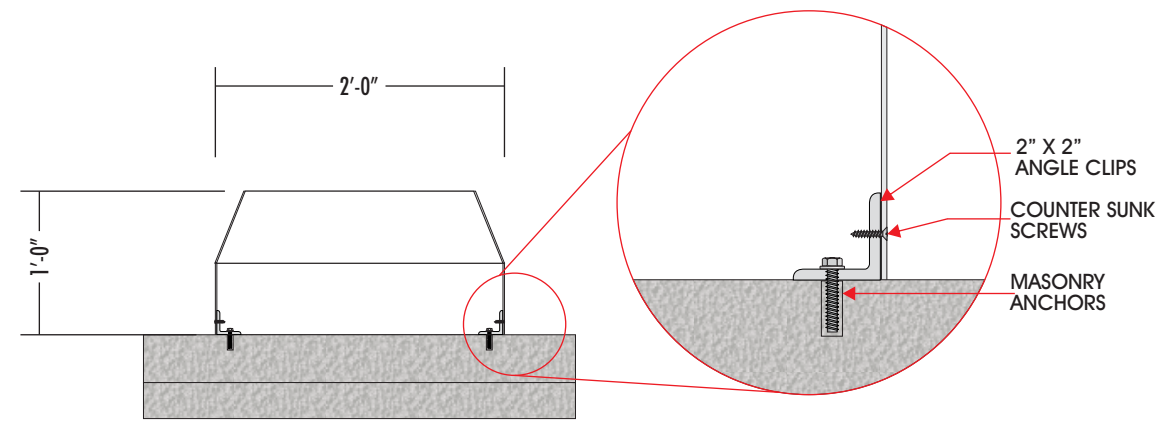
SECTION OF CABINET AND DISPLAYS
SCALE: 3/4" = 1'-0"



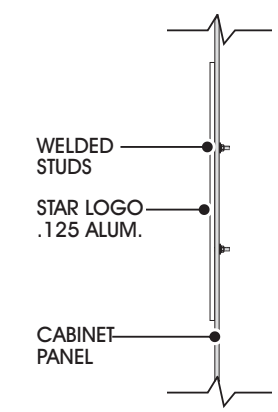
FRONT VIEW SECTION AT BASE
SCALE: 3/4" = 1'-0"



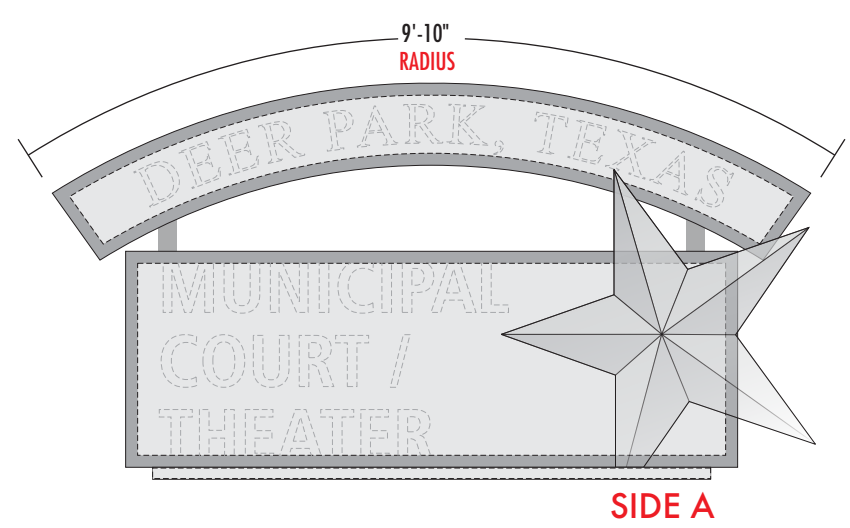
SIDE VIEW SECTION AT BASE
SCALE: 3/4" = 1'-0"



BASE COVER DETAIL
SCALE: 3/4" = 1'-0"



STAR LOGO MOUNTING DETAIL
SCALE: N.T.S.



SIGN RADIUS DETAIL
SCALE: 3/8" = 1'-0"



2611 EL CAMINO • HOUSTON, TEXAS 77054
TEL: 713.863.0600 • FAX: 713.863.7585
www.NationalSigns.com

PROJECT: DEER PARK THEATER & COURT BLDG

LOCATION: 1302 CENTER STREET

CITY/STATE: DEERPARK, TX 77536

SALES REP: REBECCA BRUCE

DATE : 4.19.2017

DRAWN BY: JORGE G. QUALITY REVIEW

DRAWING#: PD17 28121 FABRICATION READY

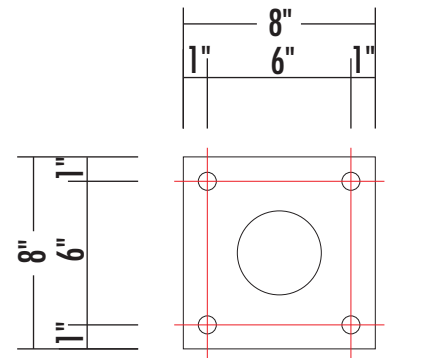
THIS RENDERING IS THE PROPERTY OF NATIONAL SIGNS, LLC. ANY REPRODUCTION OR EXHIBITION OF THIS DRAWING IS STRICTLY PROHIBITED. ©2017 NATIONAL SIGNS, LLC. THIS RENDERING MAY NOT BE USED TO CONSTRUCT AND/OR BUILD WHAT IS DEPICTED HEREIN WITHOUT THE EXPRESS WRITTEN CONSENT OF NATIONAL SIGNS, LLC.



120 VOLT ELECTRICAL SERVICE			
ELECTRICAL LOAD:	SIGN		LED DISPLAY
	2.1 Amps @120V	12.5 Amps @120V	
20 AMP CIRCUIT(S):	1 @120V	2 @120V	
PROVIDE PRIMARY ELECTRICAL WITHIN 6' OF STREET END OF SIGN CLIENT TO PROVIDE ALL PRIMARY ELECTRICAL SERVICES TO THE SIGN UNLESS OTHERWISE SPECIFIED			

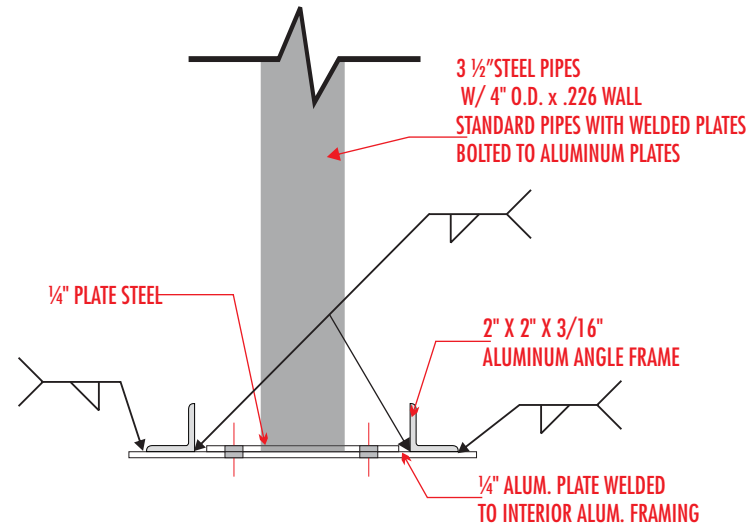
REVISIONS			
A	5.25.17	Revised layout	Jorge
B	6.13.17	Removed Option 1	Jorge
C	7.19.17	Added engineering info.	Jorge
D	2.13.18	Revised copy	Jorge

UL INSTALLATION REQUIREMENTS
THIS SIGN IS INTENDED TO BE INSTALLED IN ACCORDANCE WITH THE REQUIREMENTS OF ARTICLE 600 OF THE NATIONAL ELECTRICAL CODE AND/OR OTHER APPLICABLE LOCAL CODES. THIS INCLUDES PROPER GROUNDING AND BONDING OF THE SIGN.

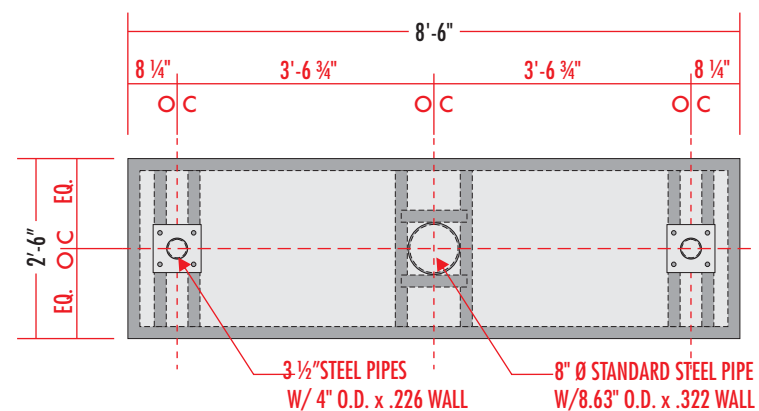


8" X 8" X 3/8" MATCH PLATE
W/ (4) 3/8" Ø THRU BOLTS
BOLTED TO ALUMINUM FRAMING

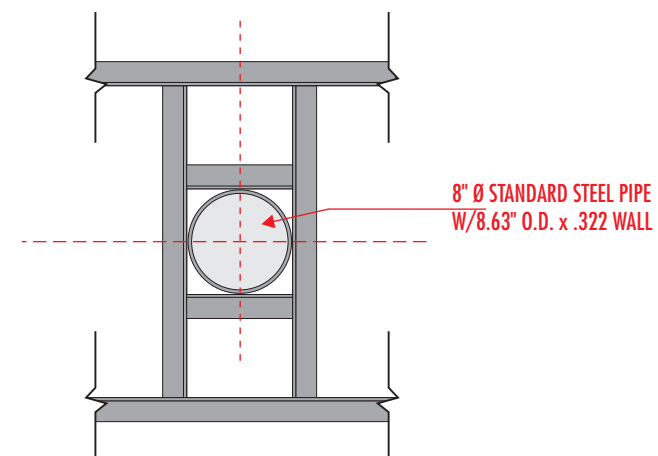
MATCH PLATE DETAIL
SCALE: 1 1/2" = 1'-0"



DETAIL
SCALE: 1 1/2" = 1'-0"



PLAN VIEW SECTION OF MAIN CABINET
SCALE: 3/8" = 1'-0"



SADDLE TYPE DETAIL OF MAIN ID CABINET
SCALE: 3/4" = 1'-0"



2611 EL CAMINO • HOUSTON, TEXAS 77054
TEL: 713.863.0600 • FAX: 713.863.7585
www.NationalSigns.com

PROJECT: DEER PARK THEATER & COURT BLDG

LOCATION: 1302 CENTER STREET

CITY/STATE: DEERPARK, TX 77536

SALES REP: REBECCA BRUCE

DATE : 4.19.2017

DRAWN BY: JORGE G. QUALITY REVIEW

DRAWING#: PD17 28121 FABRICATION READY

THIS RENDERING IS THE PROPERTY OF NATIONAL SIGNS, LLC. ANY REPRODUCTION OR EXHIBITION OF THIS DRAWING IS STRICTLY PROHIBITED. ©2017 NATIONAL SIGNS, LLC. THIS RENDERING MAY NOT BE USED TO CONSTRUCT AND/OR BUILD WHAT IS DEPICTED HEREIN WITHOUT THE EXPRESS WRITTEN CONSENT OF NATIONAL SIGNS, LLC.



120 VOLT ELECTRICAL SERVICE

	SIGN	LED DISPLAY
ELECTRICAL LOAD:	2.1 Amps @120V	12.5 Amps @120V
20 AMP CIRCUIT(S):	1 @120V	2 @120V

PROVIDE PRIMARY ELECTRICAL WITHIN 6' OF STREET END OF SIGN
CLIENT TO PROVIDE ALL PRIMARY ELECTRICAL SERVICES TO THE SIGN UNLESS OTHERWISE SPECIFIED

REVISIONS

A	5.25.17 Revised layout	Jorge
B	6.13.17 Removed Option 1	Jorge
C	7.19.17 Added engineering info.	Jorge
D	2.13.18 Revised copy	Jorge

UL INSTALLATION REQUIREMENTS

THIS SIGN IS INTENDED TO BE INSTALLED IN ACCORDANCE WITH THE REQUIREMENTS OF ARTICLE 600 OF THE NATIONAL ELECTRICAL CODE AND/OR OTHER APPLICABLE LOCAL CODES. THIS INCLUDES PROPER GROUNDING AND BONDING OF THE SIGN.

SIGN TYPE A

REMOVE AND DISPOSE OF EXISTING SIGN, CUT SUPPORT TO GRADE AND CAP, BREAK OUT PAD, BELOW GRADE FOUNDATION TO REMAIN IN PLACE NEW SIGN WILL NOT BE IN SAME LOCATION AS EXISTING



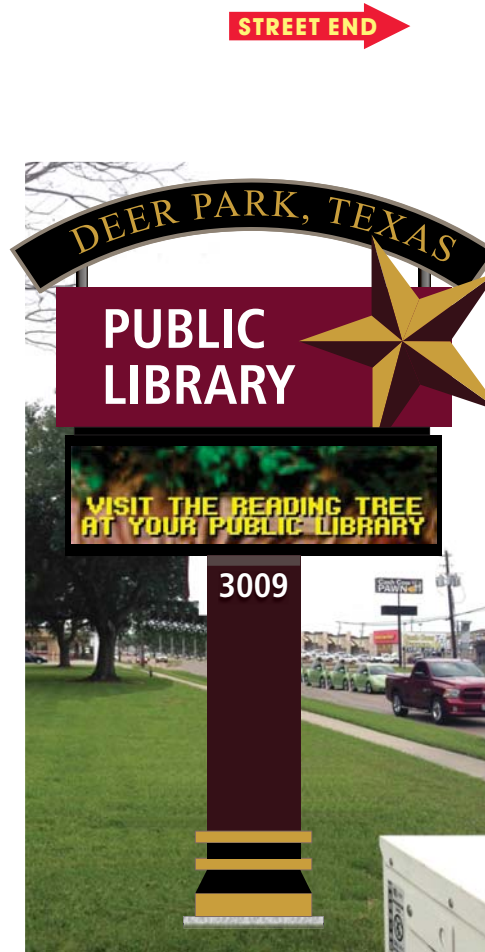
SIGN ELEVATION: **SIDE A** EXISTING CONDITIONS
SCALE: 3/8" = 1'-0"

CLIENT APPROVAL SIGNED: _____

DATE: _____

LANDLORD APPROVAL SIGNED: _____

DATE: _____



SIGN ELEVATION: **SIDE A** UPDATED CONDITIONS
SCALE: 3/8" = 1'-0"

SALES APPROVAL _____



2611 EL CAMINO • HOUSTON, TEXAS 77054
TEL: 713.863.0600 • FAX: 713.863.7585
www.NationalSigns.com

PROJECT: DEER PARK PUBLIC LIBRARY

LOCATION: 3009 CENTER STREET

CITY/STATE: DEER PARK, TX 77536

SALES REP: REBECCA BRUCE

DATE : 4.13.2017

DRAWN BY: JORGE G. QUALITY REVIEW

DRAWING#: NS17 28112 FABRICATION READY

THIS RENDERING IS THE PROPERTY OF NATIONAL SIGNS, LLC. ANY REPRODUCTION OR EXHIBITION OF THIS DRAWING IS STRICTLY PROHIBITED. ©2017 NATIONAL SIGNS, LLC. THIS RENDERING MAY NOT BE USED TO CONSTRUCT AND/OR BUILD WHAT IS DEPICTED HEREIN WITHOUT THE EXPRESS WRITTEN CONSENT OF NATIONAL SIGNS, LLC.



120 VOLT ELECTRICAL SERVICE

	SIGN	LED DISPLAY
ELECTRICAL LOAD:		
20 AMP CIRCUIT(S):		

CLIENT TO PROVIDE ALL PRIMARY ELECTRICAL SERVICES TO THE SIGN UNLESS OTHERWISE SPECIFIED

REVISIONS

A	5.25.17 Revised layout Jorge
B	6.13.17 Removed Option 1 Jorge

UL INSTALLATION REQUIREMENTS

THIS SIGN IS INTENDED TO BE INSTALLED IN ACCORDANCE WITH THE REQUIREMENTS OF ARTICLE 600 OF THE NATIONAL ELECTRICAL CODE AND/OR OTHER APPLICABLE LOCAL CODES. THIS INCLUDES PROPER GROUNDING AND BONDING OF THE SIGN.

SIGN TYPE A

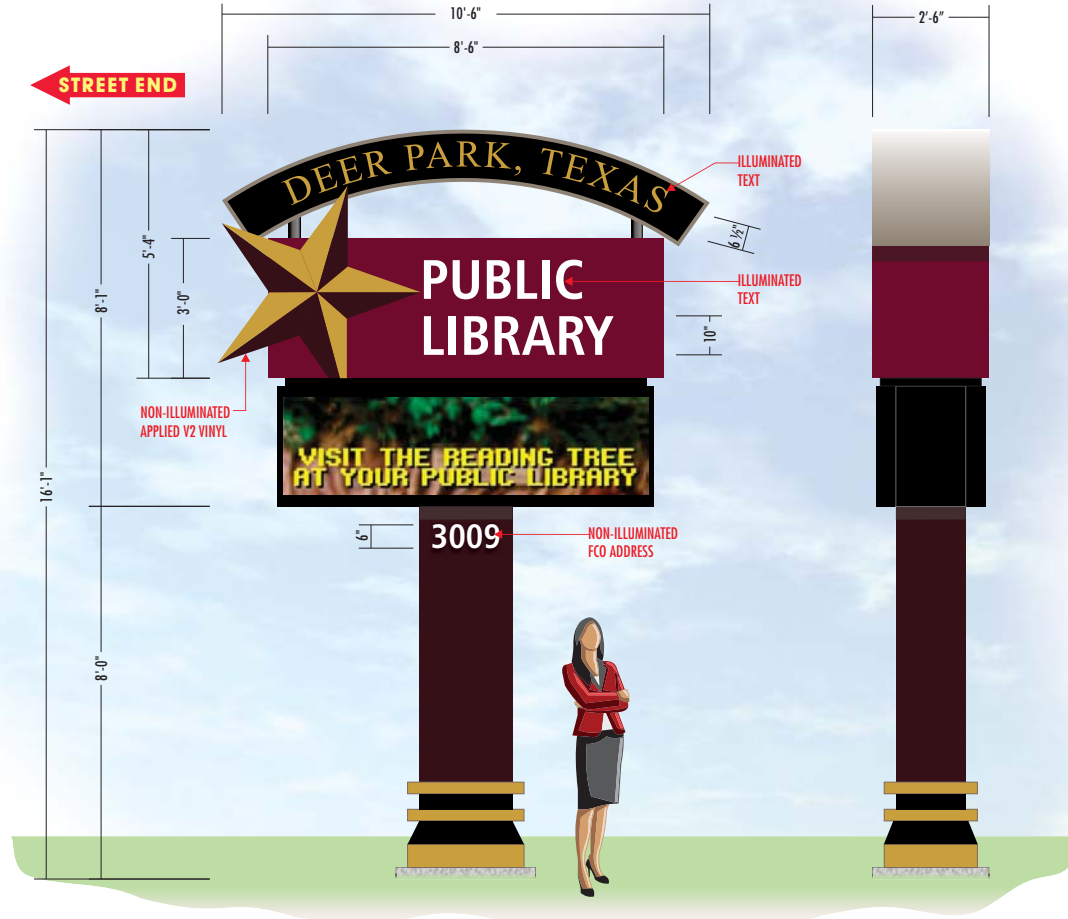
QUANTITY - 1

FABRICATE AND INSTALL DOUBLE FACED PYLON SIGN

ALL ALUMINUM CONSTRUCTION:

- ARCHED CABINET: FINISH: P1 AND P2
- TEXT: ROUTED INTO FACE AND BACKED WITH 3/16" THICK, #7328 WHITE ACRYLIC, WITH 1ST SURFACE APPLIED, V1 VINYL
- SUPPORT PIPES: FINISH: P2
- MAIN ID CABINET: FINISH: P3
- LOGO AND TEXT: ROUTED INTO FACE AND BACKED WITH 3/4" THICK CLEAR ACRYLIC, 3/8" TO EXTEND PAST FACE – 2nd SURFACE VINYL DIFFUSER APPLIED AND 1ST SURFACE APPLIED WHITE VINYL
- FLAT CUT OUT STAR: .125 ALUMINUM FLUSH MOUNTED TO CABINET FACES FINISH: P3 WITH APPLIED V2 VINYL
- REVEAL: 2" HIGH, FINISH: P2
- LED DISPLAYS:
 - 40 X 150 FULL COLOR LED MATRIX (15.85mm PIXEL PITCH)
 - 2'-1" HIGH 7'-10" WIDE DISPLAY AREA
 - 2'-7" HIGH 8'-1" WIDE CABINET
 - FULLY PROGRAMMABLE TEXT & GRAPHICS
 - COMMUNICATIONS: ETHERNET BRIDGE RADIO
 - REQUIRED ONLY IF DISTANCE BETWEEN ETHERNET ROUTER AND LED DISPLAY IS OVER 250 FEET
 - OPEN LINE OF SIGN FROM TRANSMITTER TO SIGN REQUIRED
 - TEMPERATURE SENSOR IS NOT INCLUDED
- FILLER BETWEEN CABINETS: FINISH: P2
- POLE COVER: FINISH: P2 AND P3
- ACCENTS ON POLE COVER: FINISH: P5
- ADDRESS: 1/2" THICK FLAT CUT OUT ACRYLIC FLUSH MOUNTED TO POLE COVER, FINISH: P6
- CONCRETE PAD: 3" LARGER ALL AROUND THAN SECTION ABOVE. MIN 3" ABOVE GRADE/ MIN 3" BELOW GRADE
- SUPPORT: AS PER ENGINEER REQUIREMENTS
- FOUNDATION: AS PER ENGINEER REQUIREMENTS
- INTERNALLY ILLUMINATED
- ALUMINUM ANGLE FRAME
- NO VISIBLE FASTENERS ON FACE
- COUNTER SUNK SCREWS ON ENDS

FINISH SCHEDULE	
PAINT COLORS - SATIN FINISH	
	P1: PMS WARM GRAY 8C
	P2: MP BLACK
	P3: PIM DK BURGUNDY 220-68
	P4: PMS 504C BROWN
	P5: PMS 7407C GOLD
	P6: MP WHITE
VINYL COLORS	
	V1: TRANS. GOLD NUGGET 230-131
	V2: DTM GOLD PMS 7407C & BROWN PMS 504C
	V3: DIGITAL VINYL W/ LAMINATE
APPROVED BY: _____	



SIGN ELEVATION: SIDE B

SCALE: 3/8" = 1'-0"



2611 EL CAMINO • HOUSTON, TEXAS 77054
TEL: 713.863.0600 • FAX: 713.863.7585
www.NationalSigns.com

PROJECT: DEER PARK PUBLIC LIBRARY

LOCATION: 3009 CENTER STREET

CITY/STATE: DEER PARK, TX 77536

SALES REP: REBECCA BRUCE

DATE: 4.13.2017

DRAWN BY: JORGE G. QUALITY REVIEW

DRAWING#: NS17 28112 FABRICATION READY

THIS RENDERING IS THE PROPERTY OF NATIONAL SIGNS, LLC. ANY REPRODUCTION OR EXHIBITION OF THIS DRAWING IS STRICTLY PROHIBITED. ©2017 NATIONAL SIGNS, LLC. THIS RENDERING MAY NOT BE USED TO CONSTRUCT AND/OR BUILD WHAT IS DEPICTED HEREIN WITHOUT THE EXPRESS WRITTEN CONSENT OF NATIONAL SIGNS, LLC.



120 VOLT ELECTRICAL SERVICE

	SIGN	LED DISPLAY
ELECTRICAL LOAD:		
20 AMP CIRCUIT(S):		

CLIENT TO PROVIDE ALL PRIMARY ELECTRICAL SERVICES TO THE SIGN UNLESS OTHERWISE SPECIFIED

REVISIONS

A	5.25.17 Revised layout Jorge
B	6.13.17 Removed Option 1 Jorge

UL INSTALLATION REQUIREMENTS

THIS SIGN IS INTENDED TO BE INSTALLED IN ACCORDANCE WITH THE REQUIREMENTS OF ARTICLE 600 OF THE NATIONAL ELECTRICAL CODE AND/OR OTHER APPLICABLE LOCAL CODES. THIS INCLUDES PROPER GROUNDING AND BONDING OF THE SIGN.

CLIENT APPROVAL SIGNED: _____

DATE: _____

LANDLORD APPROVAL SIGNED: _____

DATE: _____

Page 2 of 3

SALES APPROVAL _____

SIGN TYPE A



SIGN ELEVATION: **SIDE A**
SCALE: 3/8" = 1'-0"



SIGN NIGHT VIEW ELEVATION
SCALE: 3/8" = 1'-0"



2611 EL CAMINO • HOUSTON, TEXAS 77054
TEL: 713.863.0600 • FAX: 713.863.7585
www.NationalSigns.com

PROJECT: DEER PARK PUBLIC LIBRARY

LOCATION: 3009 CENTER STREET

CITY/STATE: DEER PARK, TX 77536

SALES REP: REBECCA BRUCE

DATE : 4.13.2017

DRAWN BY: JORGE G. QUALITY REVIEW

DRAWING#: NS17 28112 FABRICATION READY

THIS RENDERING IS THE PROPERTY OF NATIONAL SIGNS, LLC. ANY REPRODUCTION OR EXHIBITION OF THIS DRAWING IS STRICTLY PROHIBITED. ©2017 NATIONAL SIGNS, LLC. THIS RENDERING MAY NOT BE USED TO CONSTRUCT AND/OR BUILD WHAT IS DEPICTED HEREIN WITHOUT THE EXPRESS WRITTEN CONSENT OF NATIONAL SIGNS, LLC.



120 VOLT ELECTRICAL SERVICE

	SIGN	LED DISPLAY
ELECTRICAL LOAD:		
20 AMP CIRCUIT(S):		

CLIENT TO PROVIDE ALL PRIMARY ELECTRICAL SERVICES TO THE SIGN UNLESS OTHERWISE SPECIFIED

REVISIONS

A	5.25.17 Revised layout Jorge
B	6.13.17 Removed Option 1 Jorge

UL INSTALLATION REQUIREMENTS

THIS SIGN IS INTENDED TO BE INSTALLED IN ACCORDANCE WITH THE REQUIREMENTS OF ARTICLE 600 OF THE NATIONAL ELECTRICAL CODE AND/OR OTHER APPLICABLE LOCAL CODES. THIS INCLUDES PROPER GROUNDING AND BONDING OF THE SIGN.

CLIENT APPROVAL

SIGNED:

DATE:

LANDLORD APPROVAL

SIGNED:

DATE:

SALES APPROVAL

SIGN TYPE A

QUANTITY - 1

FABRICATE AND INSTALL ILLUMINATED DOUBLE FACED MONUMENT SIGN

ALL ALUMINUM FABRICATION:
ARCHED CAP: FINISH: P1

REVEAL: FINISH: P2

MAIN ID CABINET: FINISH: P3

- LOGO AND TEXT: ROUTED INTO FACE AND BACKED WITH 3/4" THICK CLEAR ACRYLIC, 3/8" TO EXTEND PAST FACE - 2nd SURFACE VINYL DIFFUSER APPLIED AND 1ST SURFACE APPLIED WHITE VINYL AND V1 VINYL
- ADDRESS: 1/2" THICK FLAT CUT OUT ACRYLIC MOUNTED FLUSH TO FILLER ON SIDE FACING STREET, FINISH: P4

- FLAT CUT OUT STAR: .125 ALUMINUM FLUSH MOUNTED TO CABINET FACES FINISH: P3 WITH APPLIED V2 VINYL

LED DISPLAYS:

- 40 X 150 FULL COLOR LED MATRIX (15.85mm PIXEL PITCH)
- 2'-1" HIGH 5'-3" WIDE DISPLAY AREA
- 2'-7" HIGH 5'-6" WIDE CABINET
- FULLY PROGRAMMABLE TEXT & GRAPHICS
- COMMUNICATIONS: ETHERNET BRIDGE RADIO
- REQUIRED ONLY IF DISTANCE BETWEEN ETHERNET ROUTER AND LED DISPLAY IS OVER 250 FEET
- OPEN LINE OF SIGN FROM TRANSMITTER TO SIGN REQUIRED
- TEMPERATURE SENSOR IS NOT INCLUDED

- DONOR PLAQUE: TO BE DETERMINED

STONE BASE:

- ALUMINUM ANGLE FRAME
- DUROCK PANELS FASTENED TO FRAME
- MASONRY STONE: EL DORADO STONE, COUNTRY RUBBLE, CAPRI
- NOTE: MASONRY SUPPLIED AND INSTALLED BY NATIONAL SIGNS

- CONCRETE PAD: 6" LARGER ALL AROUND THAN SECTION ABOVE, MIN 4" ABOVE GRADE/ MIN 3" BELOW GRADE
- SUPPORT: AS PER ENGINEER REQUIREMENTS
- FOUNDATION: AS PER ENGINEER REQUIREMENTS

- INTERNALLY ILLUMINATED WITH WHITE LED LIGHTS
- ALUMINUM ANGLE FRAME
- NO VISIBLE FASTENERS ON FACE
- COUNTER SUNK SCREWS ON ENDS

FINISH SCHEDULE

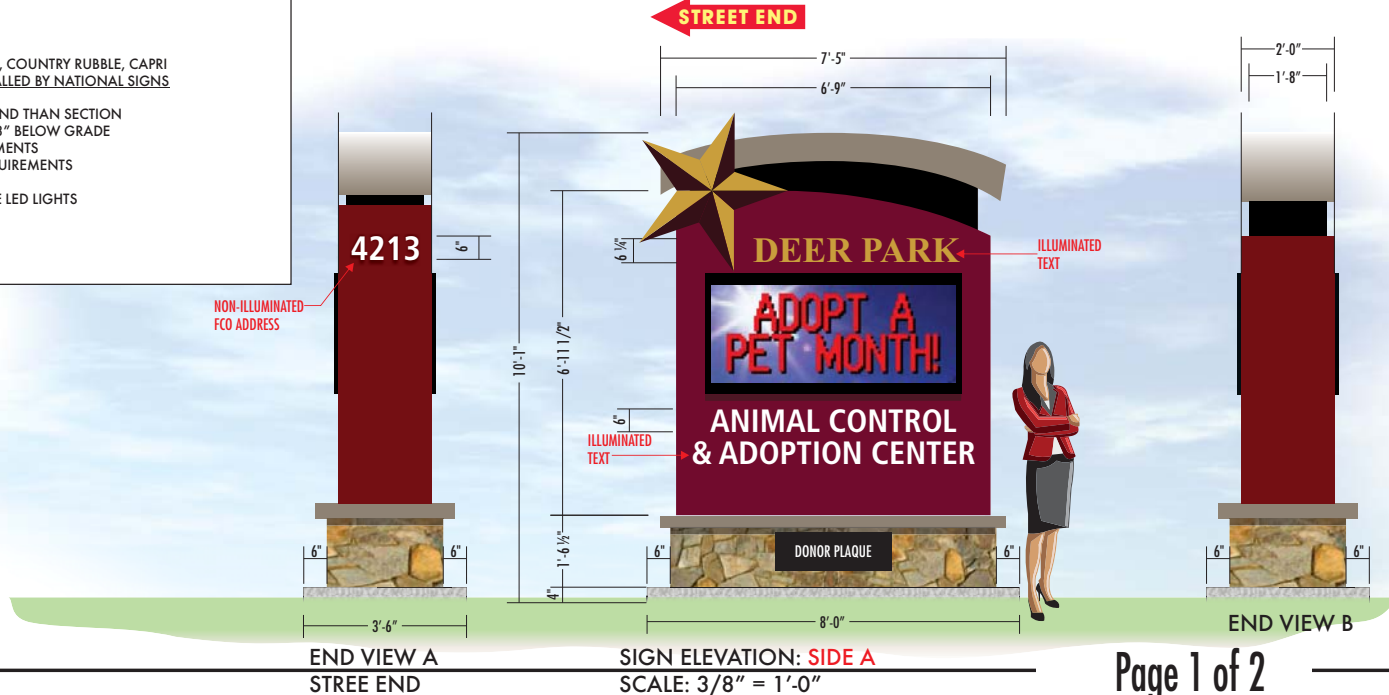
PAINT COLORS - SATIN FINISH

- P1: PMS WARM GRAY 8C
- P2: MP BLACK
- P3: PTM DK BURGUNDY 220-68
- P4: MP WHITE

VINYL COLORS

- V1: TRANS. GOLD NUGGET 230-131

APPROVED BY: _____



END VIEW A
STREET END

SIGN ELEVATION: SIDE A
SCALE: 3/8" = 1'-0"

END VIEW B



2611 EL CAMINO • HOUSTON, TEXAS 77054
TEL: 713.863.0600 • FAX: 713.863.7585
www.NationalSigns.com

PROJECT: DEER PARK ANIMAL CONTROL

LOCATION: 4213 LUELLA - BUILDING G

CITY/STATE: DEER PARK, TX 77536

SALES REP: REBECCA BRUCE

DATE: 6.9.2017

DRAWN BY: JORGE G. QUALITY REVIEW

DRAWING#: NS17 28384 FABRICATION READY

THIS RENDERING IS THE PROPERTY OF NATIONAL SIGNS, LLC. ANY REPRODUCTION OR EXHIBITION OF THIS DRAWING IS STRICTLY PROHIBITED. ©2017 NATIONAL SIGNS, LLC. THIS RENDERING MAY NOT BE USED TO CONSTRUCT AND/OR BUILD WHAT IS DEPICTED HEREIN WITHOUT THE EXPRESS WRITTEN CONSENT OF NATIONAL SIGNS, LLC.



120 VOLT ELECTRICAL SERVICE

SIGN	LED DISPLAY
ELECTRICAL LOAD:	
20 AMP CIRCUIT(S):	

CLIENT TO PROVIDE ALL PRIMARY ELECTRICAL SERVICES TO THE SIGN UNLESS OTHERWISE SPECIFIED

REVISIONS

A	6.29.17	REVISE LAYOUT	JORGE
B	7.5.17	Revised concrete pad size	Jorge

UL INSTALLATION REQUIREMENTS

THIS SIGN IS INTENDED TO BE INSTALLED IN ACCORDANCE WITH THE REQUIREMENTS OF ARTICLE 600 OF THE NATIONAL ELECTRICAL CODE AND/OR OTHER APPLICABLE LOCAL CODES. THIS INCLUDES PROPER GROUNDING AND BONDING OF THE SIGN.

CLIENT APPROVAL SIGNED: _____

DATE: _____

LANDLORD APPROVAL SIGNED: _____

DATE: _____

SALES APPROVAL _____

Page 1 of 2



2611 EL CAMINO • HOUSTON, TEXAS 77054
TEL: 713.863.0600 • FAX: 713.863.7585
www.NationalSigns.com

PROJECT: DEER PARK ANIMAL CONTROL

LOCATION: 4213 LUELLA - BUILDING G

CITY/STATE: DEER PARK, TX 77536

SALES REP: REBECCA BRUCE

DATE : 6.9.2017

DRAWN BY: JORGE G QUALITY REVIEW

DRAWING#: NS17 28384 FABRICATION READY

THIS RENDERING IS THE PROPERTY OF NATIONAL SIGNS, LLC. ANY REPRODUCTION OR EXHIBITION OF THIS DRAWING IS STRICTLY PROHIBITED. ©2017 NATIONAL SIGNS, LLC. THIS RENDERING MAY NOT BE USED TO CONSTRUCT AND/OR BUILD WHAT IS DEPICTED HEREIN WITHOUT THE EXPRESS WRITTEN CONSENT OF NATIONAL SIGNS, LLC.



120 VOLT ELECTRICAL SERVICE

	SIGN	LED DISPLAY
ELECTRICAL LOAD:		
20 AMP CIRCUIT(S):		

CLIENT TO PROVIDE ALL PRIMARY ELECTRICAL SERVICES TO THE SIGN UNLESS OTHERWISE SPECIFIED

REVISIONS

A	6.29.17	REVISE LAYOUT	JORGE
B	7.5.17	Revised concrete pad size	Jorge

UL INSTALLATION REQUIREMENTS

THIS SIGN IS INTENDED TO BE INSTALLED IN ACCORDANCE WITH THE REQUIREMENTS OF ARTICLE 600 OF THE NATIONAL ELECTRICAL CODE AND/OR OTHER APPLICABLE LOCAL CODES. THIS INCLUDES PROPER GROUNDING AND BONDING OF THE SIGN.



SIGN NIGHT VIEW ELEVATION: **SIDE A**
SCALE: 1/2" = 1'-0"

Page 2 of 2

CLIENT APPROVAL **SIGNED:**

DATE:

LANDLORD APPROVAL **SIGNED:**

DATE:

SALES APPROVAL