



City of Deer Park Annual Report

July 17, 2018

Overview

Our Mission

A non-profit organization, whose mission for over 30 years has been to ***Grow and market a vibrant regional economy.***

Impact Initiatives

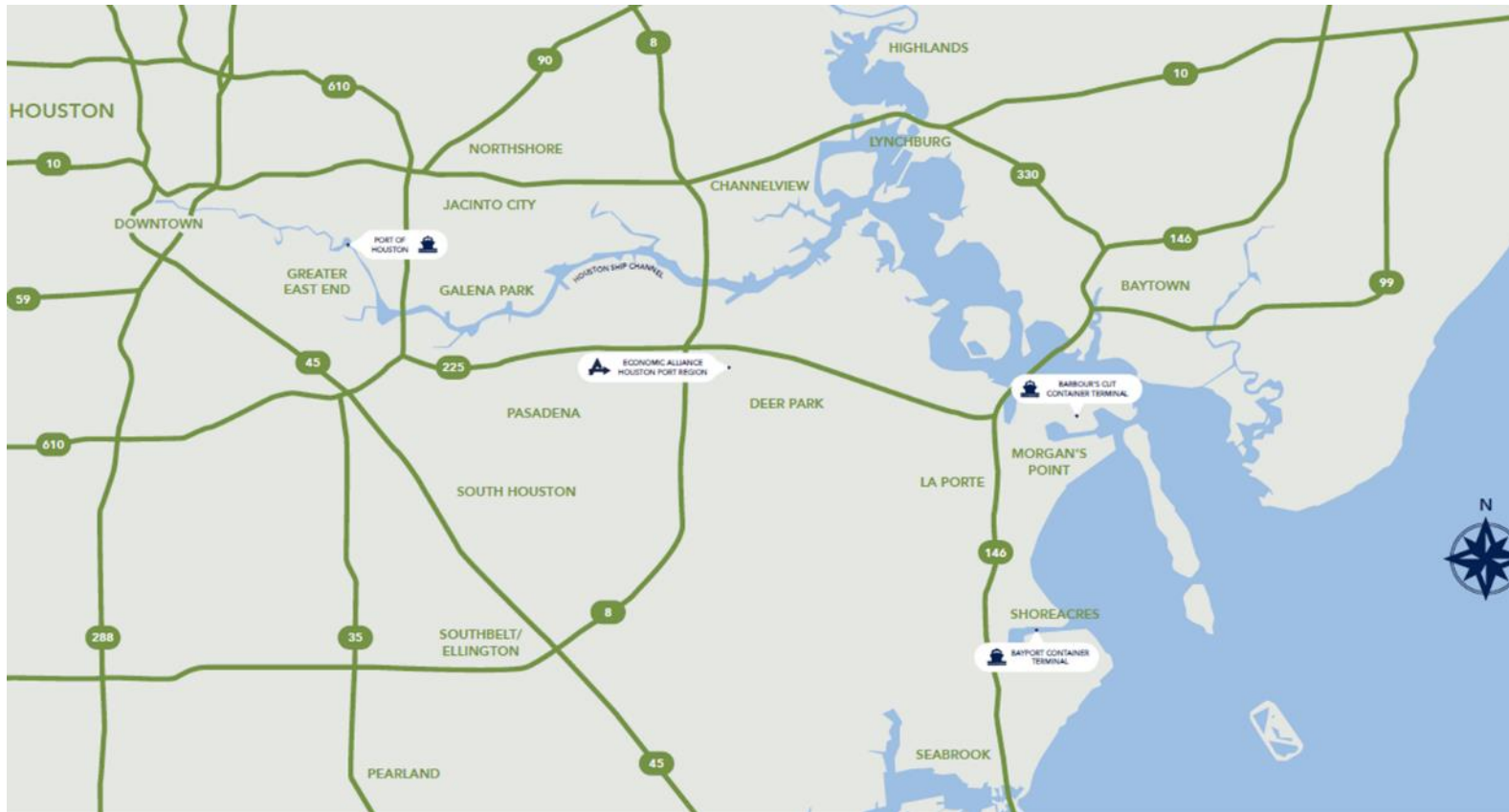
- Economic Development
- Public Policy
- Workforce Development
- Transportation
- Quality of Life



Who We Represent



Most sought-after region in the entire world for petrochemical, manufacturing, maritime and logistics operations



25 miles of the 52 mile
Houston Ship Channel

World's 2nd largest petrochemical complex

Nation's busiest port in terms of foreign tonnage

12 Cities, Harris County
and Port Houston

**250 Private Sector
Members**

Global leaders in refining and petrochemical production

Leadership – Executive Board



Chairman - Glenn Royal, Royal Financial Group Merrill Lynch

Barry Klein, Shell Deer Park, Site Manager

Brenda Hellyer, San Jacinto College District, Chancellor

Roger Blackburn, Wood Group USA, Executive Account Manager

Jeff Garry, Dow Chemical Company, Houston Area Operations Director

Karen Gregory, CenterPoint Energy, Economic Development Regional Manager

Steve Cote, Brady Chapman & Holland, Partner & Chairman PEDC

Mayor Tom Reid, City of Pearland – Ex Officio



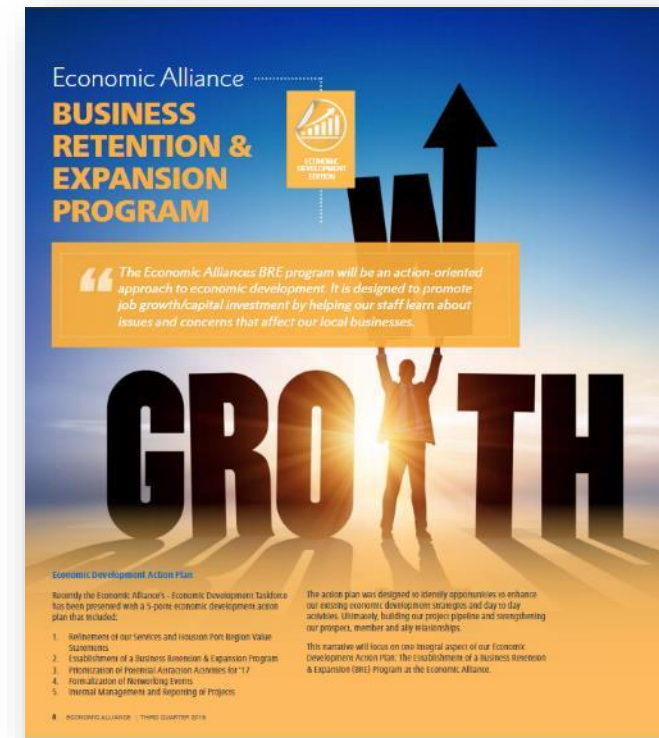
Economic Development

Economic Development

Professional Economic Development Services

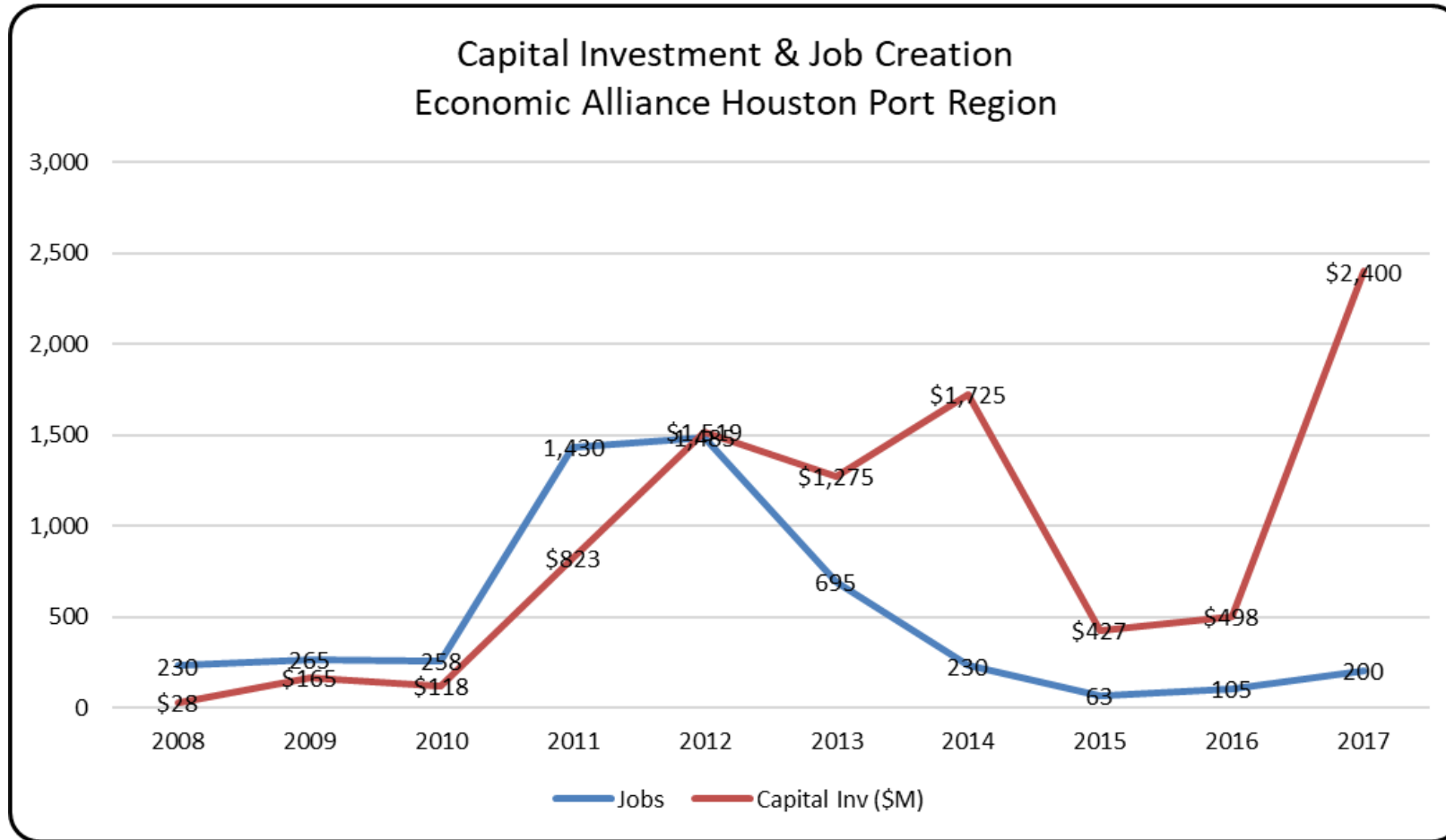
Provide a professional relationship to navigate the multiple facets of the site selection/expansion process, including the facilitation to our economic development support network.

- Conduct **real estate searches**
- Participation and coordination of **site-selection tours**
- Facilitate **access to data**
- Provide guidance in evaluating State and Local **incentive & workforce programs**
- **Advocacy** for projects & **mobilization** of key board members



Economic Development

Impact on the Houston Port Region – Historical



59 “Wins” over a 10-year period:

- **\$8.9B Capital Investment**
- **4,961 Jobs Created**

Economic Development

Impact on the Houston Port Region – ED Projects '17



lyondellbasell

FLINT HILLS
resources

CAPITAL INVESTMENT = \$2.4 Billion

JOBS CREATED

300

JOBS RETAINED

100

INDIRECT JOBS

673

ECONOMIC IMPACT ON THE HOUSTON PORT REGION

TOTAL JOBS

1073

ANNUAL IMPACT CONSTRUCTION JOBS

\$ 551.7 M

1100

ONE TIME
IMPACT

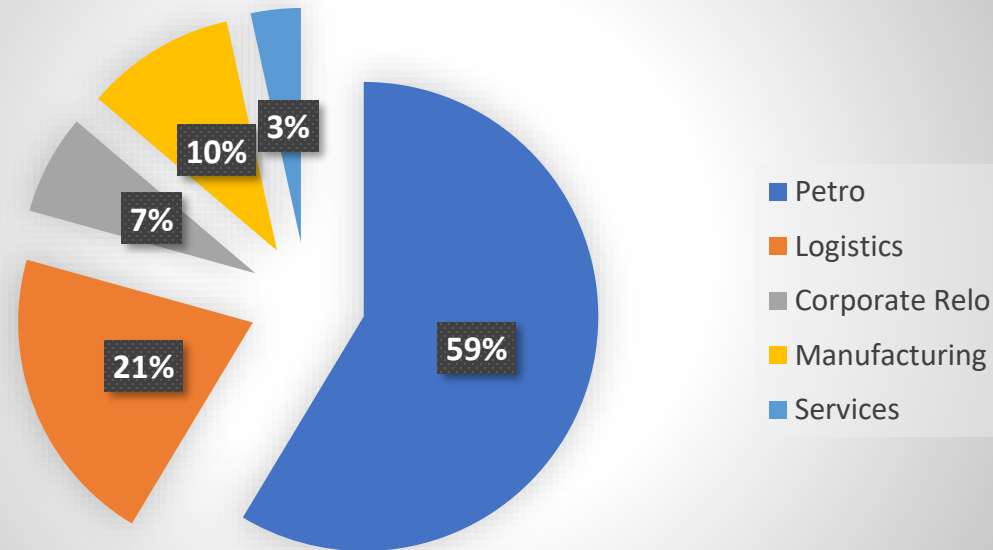
\$ 639.94 M

Economic Development

Current Project Pipeline Breakdown

Total Projects	Potential Direct Job Creation	Potential Capital Investment
34	1,994	\$6.5B

Sector Breakdown by Percentage



Economic Development

Why focus on the Petrochemical Industry?

For every one job created from the business of chemistry, **6.8 jobs are created in other sectors.**

In addition, the average annual salary of a U.S. chemical industry employee is \$94,000, which is 44 percent higher than the average U.S. manufacturing pay.





Public Policy

Public Policy

One Voice, under the Leadership of our Members

32 Economic Alliance
Members Participated in
35 Meetings in
Washington DC



24 Economic Alliance
Members Participated in
31 Meetings in
Austin TX



Workforce Development

Workforce Development

Inspiring & Preparing the Next Generation Workforce

Filling the pipeline of potential workers in the petrochemical, maritime and logistics industries.



Leveraging **partnerships** with the EHCMA and 9 community colleges to **recruit and train a qualified workforce**



Providing **career paths and job opportunities** to address **attrition, skill enhancement and demand**



2018 YTD – 33 presentations = 3,591 contacts

2017 – 72 presentations = 12,909 contacts

2016 – 50 presentations = 5,222 contacts





Transportation

Public Policy - Transportation Taskforce



Committee of Regional Transportation Stakeholders

- Regional Mayors
- East Harris County Mfg's Assoc. (130+ plants)
- Port of Houston Authority
- Harris County
- TxDOT
- HGAC
- BayTran

**Addressing critical issues associated with the
movement of Freight and Commuters**

Public Policy - Transportation Taskforce



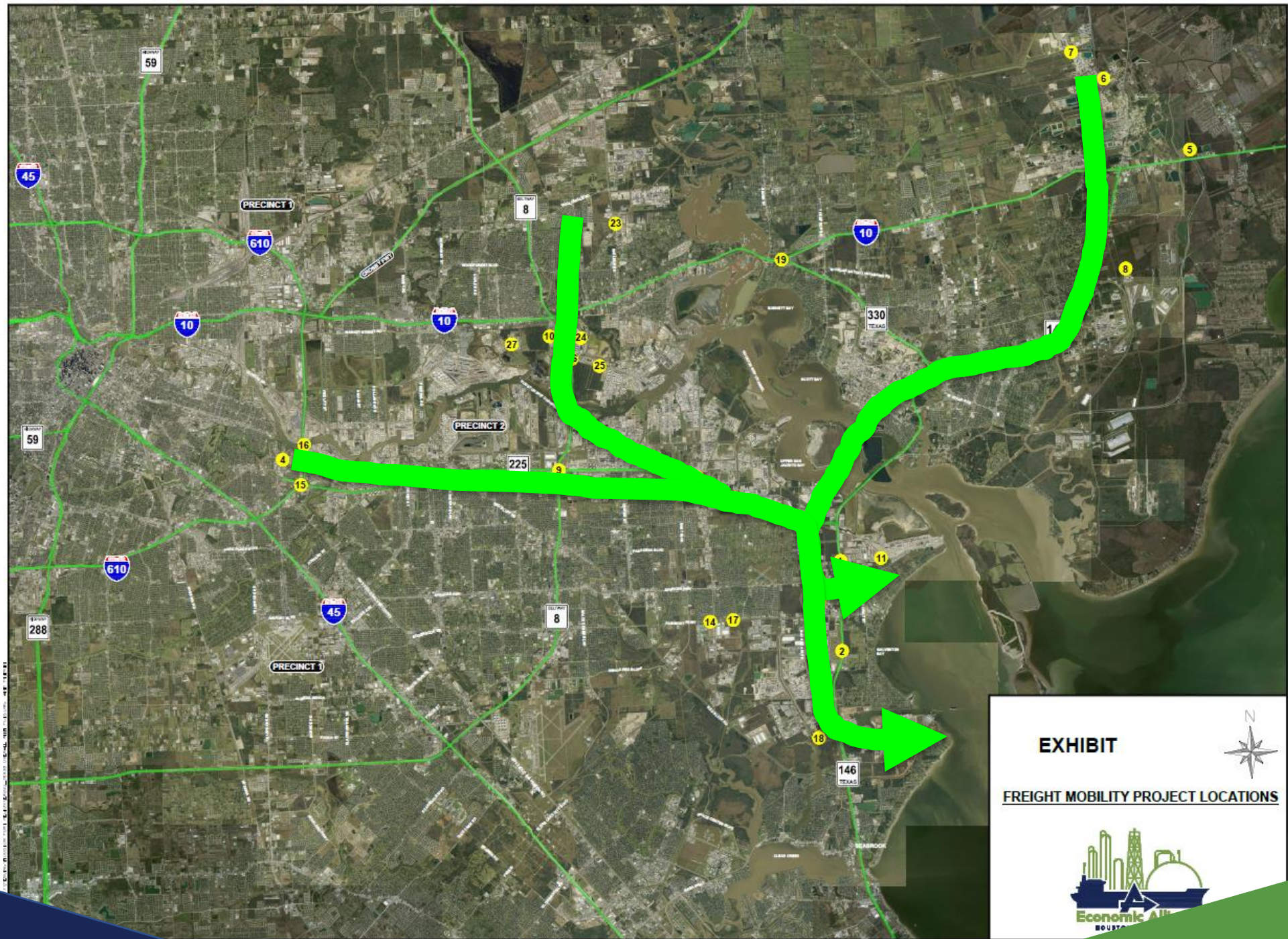
Why the Urgency

1. \$50B in projects in the petrochemical industry over the last 5 years, the first production coming online in 2018
2. Combined with Port of Houston trade via the Panama Canal and increased resin production, container volumes will grow from 2 million TEU to 3 million TEU in 2-3 years
3. Houston Ship Channel activity accounts for 16% of states GDP
4. The state needs to invest in this critical freight infrastructure to avoid congestion & maintain global competitiveness.

Houston Port Region Freight Improvement Strategic Plan



#	Project	Priority	Info & Updates
1	Barbours Cut Direct Connectors	H/S	August of 2019 Intersection improvements (not Direct Connectors) TxDOT is working with Texas A&M Transportation Institute to study Origin/Destinations between the Barbours' Cut Terminal and the SH 146/SH 225 interchange to determine the impacts of a direct connector
2	SH-146 Widening - Fairmont to Red Bluff Road	H/S	Widen to 6 main lanes Environmentally cleared Final design underway/anticipated to let in Fall 2022 The total cost of this project is approximately \$42 million
3	SH-225 expansion/improvement (8-East 146)	H/S	• TxDOT is working on a feasibility study for SH 225 from I-610 to SH 146. completion Q3 2018
4	Broadway Double Track Project	H/S	This may be in the TIP for FY 2017 as MPOID 17017 - please verify
5	Grand Parkway NE Segments H & I	H/S	Design-Build Project/recently awarded The total cost of this project is approximately \$1.4 Billion Estimated completion date is February 2022 Construction to begin Summer 2018
6	FM-1942 from Hatcherville Road to SH-146 – road improvement	H/S	
7	Hatcherville Rd from FM-1942 to Liberty/Chambers Co.Line – road widening	H/S	• No improvements are currently planned
8	FM 565 from SH-146 to SH-99 – widening and addition of turning lanes	H/S	MPOID 17113; FY 2024 Project from FM 1409 to SH 99: Reconstruct and realign roadway is anticipated to let for construction in FY 2018
9	BW-8 Direct Connectors @ SH-225: Westbound on 225 to 8 N, Northbound on 8 to E/W 225, Eastbound on 225 to 8S	H/M	Working with HCTRA Construction of 4 connectors is funded Applying for Federal Grant for the remain work Environmental studies underway No ROW needed Anticipated letting in 2021 Estimate construction cost for entire interchange is \$180 Million
10	SH146 from I10 to Business 146 (Alexander Drive)		The grade separation/freeway starts at Alexander and continues all the way to Red Bluff. There probably needs to be some work on SH146 North of 110 through Mont Belvieu also
11	Penn City Connector	H/M	
12	Barbours Cut Blvd expansion to 6 lanes	H/M	TXDOT in talks with Port Houston
13	SH-225 expansion/improvement (8-West 610)	H/M	
14	I-69 Bypass (feasibility of a bypass on the East side of Houston is being considered)	H/M	Potentially starting as far South as Wharton and tying as far North as Cleveland Potential to use SH 99 Seg. H & I Southern Section of an I-69 Bypass is being discussed through HGAC TxDOT is beginning an Origin-Destination Study (O-D) to determine how many trucks would use the route
15	Fairmont Parkway (Turning improvements)	H/M	Under construction County and La Porte funded through TxDOT Grant
16	SH-225 and I-610 Interchange	H/L	TxDOT is working with H-GAC to begin a feasibility study for SH 225 from I-610 to SH 146
17	I-610 bridge at HSC	H/L	Additional meetings with the Economic Alliance are requested to identify the needs and project scope at this location
18	Fairmont Parkway (Widening)	H/L	Widening is recommended from Canada Rd to SH 146. There are at least 3 major freight generators on the south side of Fairmont in this area.
19	Port Road Phase 3 & Drainage	M/M	Related project: MPOID 10452 in FY 2020 widens Port Rd. from SH 146 to Todville
20	SH-330 (improve northbound connectivity to I-10 - 2 lanes or direct connect)	M/M	Construct Northbound to Eastbound connection Working to secure construction funding Anticipated environmental clearance – Summer 2018 The estimated let date is Spring 2022 The total cost of this project is approximately \$10 million
21	Independence Parkway (improve Northbound connectivity to SH-225)	M/M	dedicated turning lane. Getting those trucks in and out of Ind. Blvd. Increase turning capacity
22	Spencer Highway Bridge (Bayport Rail Mainline) at Fairmont	M/L	MPOID 10532; FY 2018
23	Bayport Mainline Rail Track	M/L	MPOID 10455; FY 2017
24	Sheldon Road expansion	M/L	County updating cost estimate of project
25	Applet Road (Sheldon to Market)	M/L	
26	Jacintoport Road Improvement	L/L	Also on the Primary Highway Freight System, thereby eligible for federal freight funding
27	Jacintoport Direct Connectors	L/L	Direct Connect makes it a TxDOT/HCTRA discussion
28	Haden Rd (extension to Penn City Rd)	L/L	County roadway/POHA
	TxDOT Projects shaded		Priority Level: Time Frame Required:
	Harris County Projects		H - HIGH Priority / S - SHORT Term 0-5 yrs M - MEDIUM Priority / M - MID Term 5-10 yrs L - LOW Priority / L - LONG Term 10+ yrs





Quality of Life

Mini-Mural Matching Grant Program



Cities currently participating:

Seabrook

Pasadena

La Porte

Jacinto City

Deer Park (w/o grant)

Houston (w/o grant)

Coming Soon:

Galena Park

Baytown

\$5,000 Matching Grant
Beautification Projects





Member Involvement

Task Forces



Provide Your Voice, Contribute and Connect

8 Task Forces - Member education/growth, along with setting a public policy agenda, event planning, workforce enhancement and marketing the region through Q of L and economic development initiatives



Business Growth

Provide mechanisms for the education and development of business - **1st Wed 9am**



Public Policy

Info sharing to set a public policy agenda for the region - **4th Tues 3pm**



Gulf Coast Industry Forum

Input and planning of our largest signature event- **3rd Tues 3pm**



Economic Development

Promote job creation and capital investment in the region - **4th Wed 3pm**



Transportation

Prioritize and support local transportation projects - **Invite**



Women's Leadership

Showcasing and empowering women's leadership



Quality of Life

Enhance our regions marketable image – **Bi-monthly**



Workforce Development

Promotion of workforce development initiatives - **3rd Thurs 3pm**

Informing the Nation

Gulf Coast Industry Forum: September 19th & 20th 9th Year



Gulf Coast Industry Forum
AN ECONOMIC ALLIANCE HOUSTON PORT REGION EVENT

2-day Conference Brings Together Industry Leaders focused in Petrochemicals, Energy and Logistics



Networking & Connections

- **1000+** Attendees
- **40** Exhibiting Companies & Institutions



Industry & Market Insight

- Global Chemicals Outlook
- Plant Managers Panel
- Midstream Oil & Gas Report
- Regulations & Policy Update
- Port Houston Update





Thank You

www.allianceportregion.com