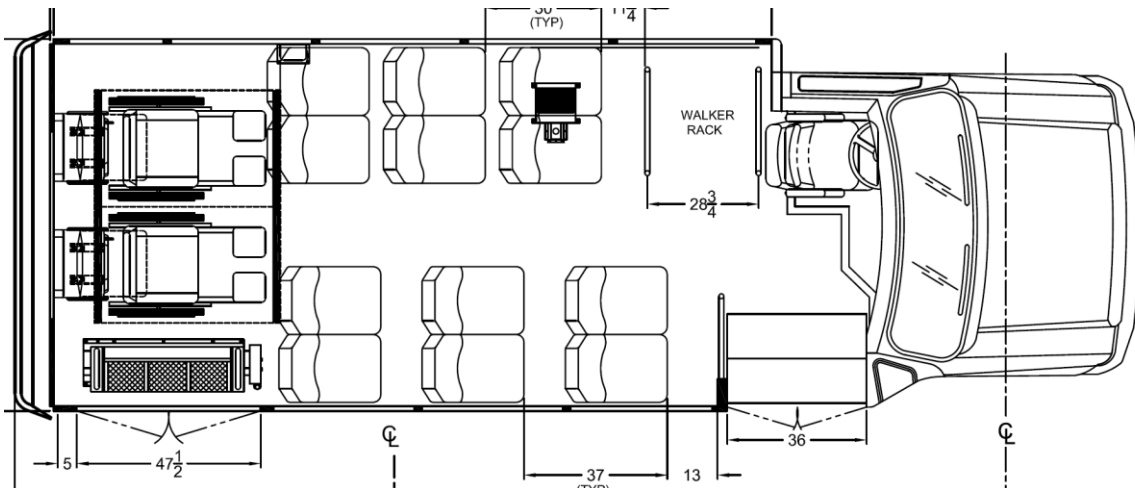




Creative Bus Sales

11/6/18



2018 STARCRAFT ALLSTAR 24 ADA SHUTTLE BUS

- 14 SEATED PASSENGERS OR
- 13 SEATED PASSENGERS + 1 WHEELCHAIR OR
- 12 SEATED PASSENGERS + 2 WHEELCHAIRS

FORD E350 SUPERDUTY CHASSIS

6.2L V8 GASOLINE ENGINE

FIVE SPEED AUTOMATIC TRANSMISSION
225 AMP FORD OEM ALTERNATOR
NON SLIP FLOORING THROUGHOUT
TA 733 SUPER FORD 68,000 BTU WITH DUAL COMPRESSORS
DOOR ACTIVATED INTERIOR LIGHTS
REAR HEATER, 65K BTU
DELUXE AM/FM CD WITH 4 SPEAKERS
PASSENGER DOOR-ELECTRIC
DOUBLE WHEELCHAIR DOORS
BRAUN CENTURY WHEELCHAIR LIFT 34"x54" PLATFORM
FAST IDLE WITH INTERLOCK
QSTRAINT 820L MAX RETRACT WHEELCHAIR TIE DOWN (2)
PRIORITY SEATING SIGN
WHEELCHAIR DECAL
BACK UP ALARM
CEILING GRAB RAIL (1)
1 1/4" GRAB RAIL PARALLEL TO ENTRANCE
STANCHION AND MODESTY PANEL
ADDITIONAL STANCHION AND MODESTY PANEL FOR WALKER STORAGE BEHIND
DRIVER
DRIVER SEAT HIGH BACK, RECLINER, ARMREST
DRIVER SEAT COVER-LEVEL 1 VINYL
MID HIGH DOUBLE SEAT (6)
SINGLE FLIP SEATS (2)
PASSENGER LAP BELTS (14)
SEAT COVER-LEVEL 4 (14)
- REPEL BLUE
ANTI VANDAL GRAB HANDLE BLACK EACH (6)
FORD GPC
FORD MOBILITY DISCOUNT
Two TV System with DVD Player in Dash
Two USB Charges
Spare Tire Shipped Loose in Bus

UNIT PRICE FOB DEER PARK, TX	\$62,024.96*
HGAC Fee	\$600.00
Total Cost	\$62,624.96

*Price does not include tax, license, or DMV fees.

*Prices are good for 30 days.