

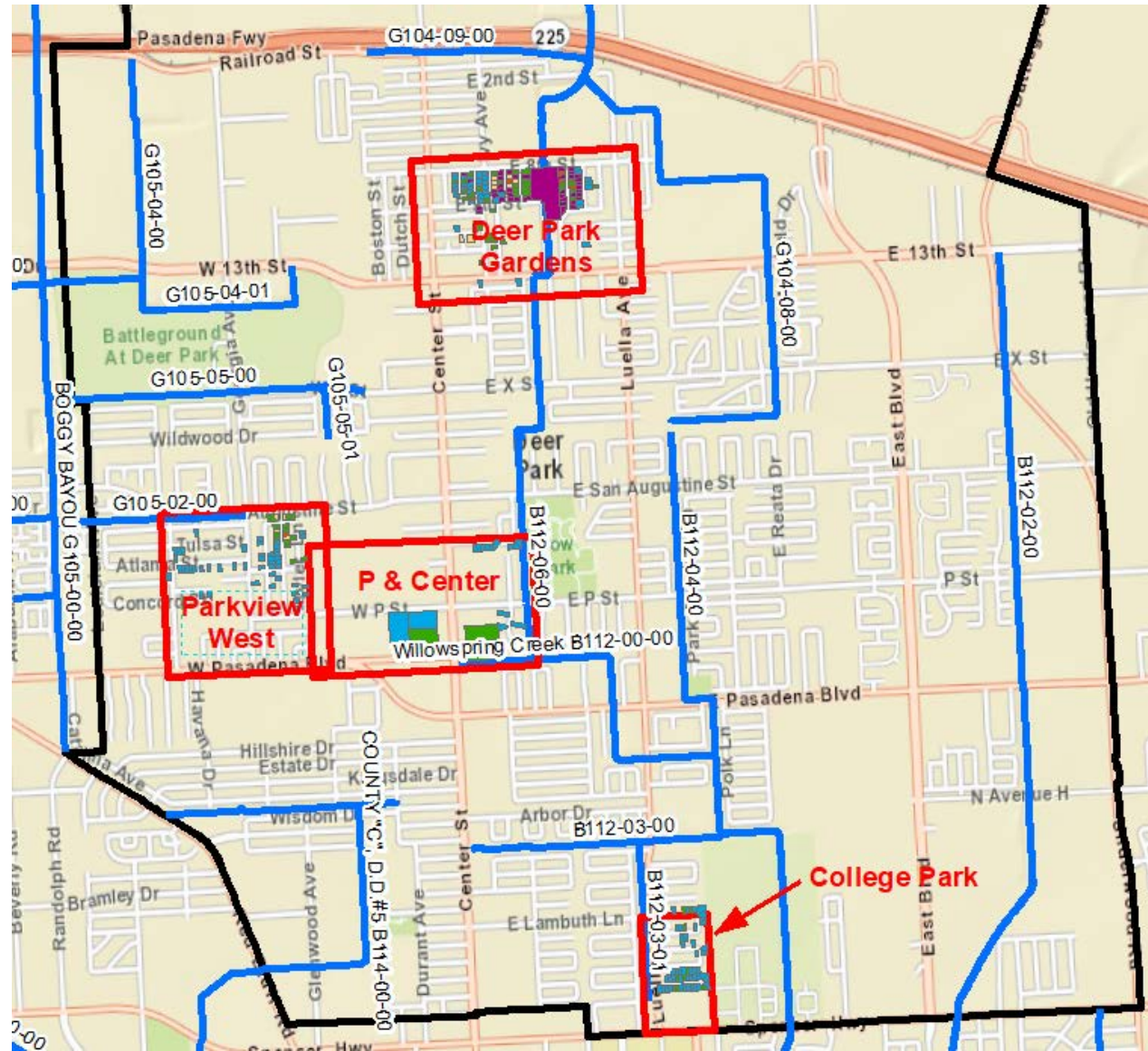
DEER PARK



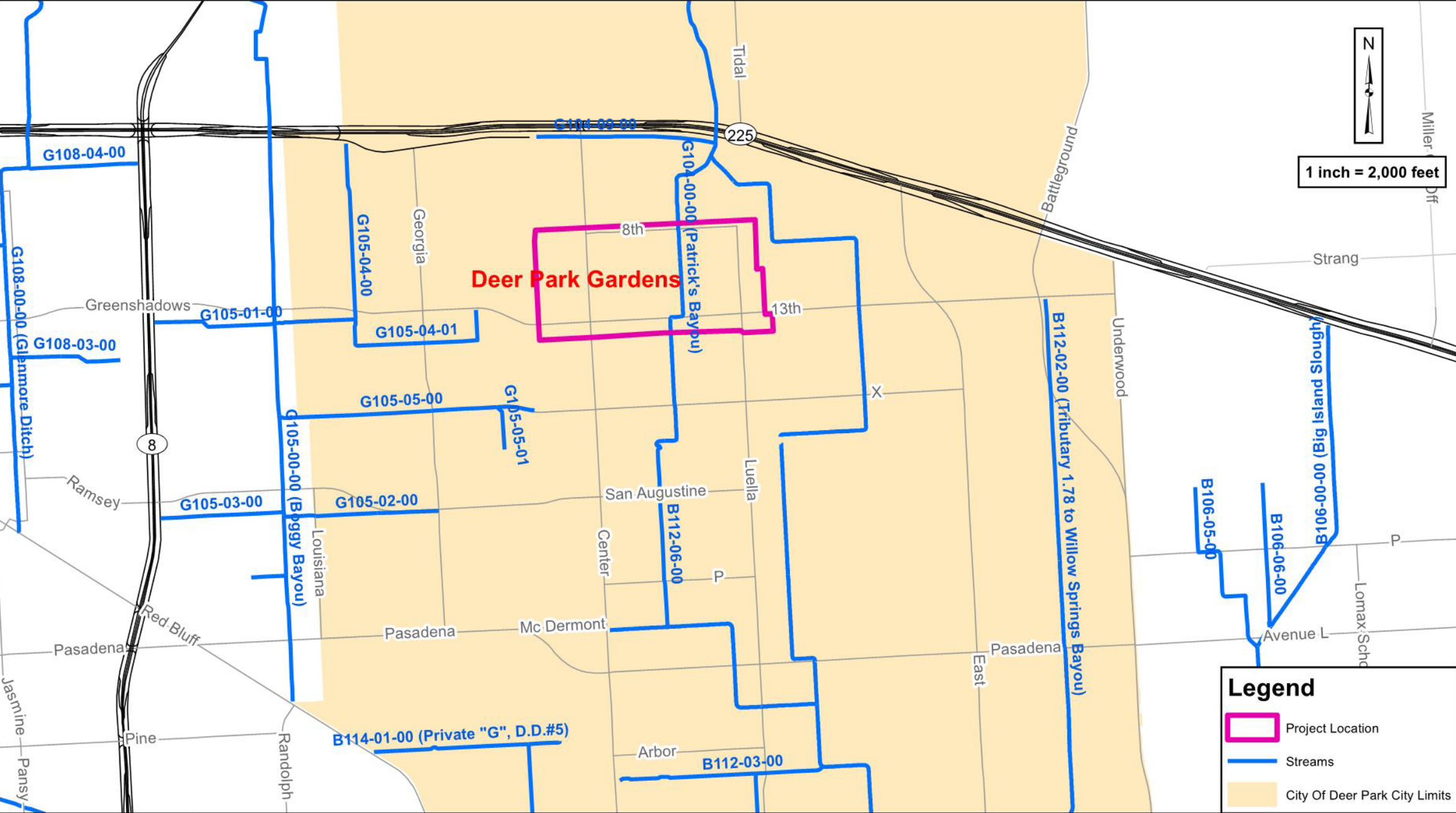
October 1, 2019



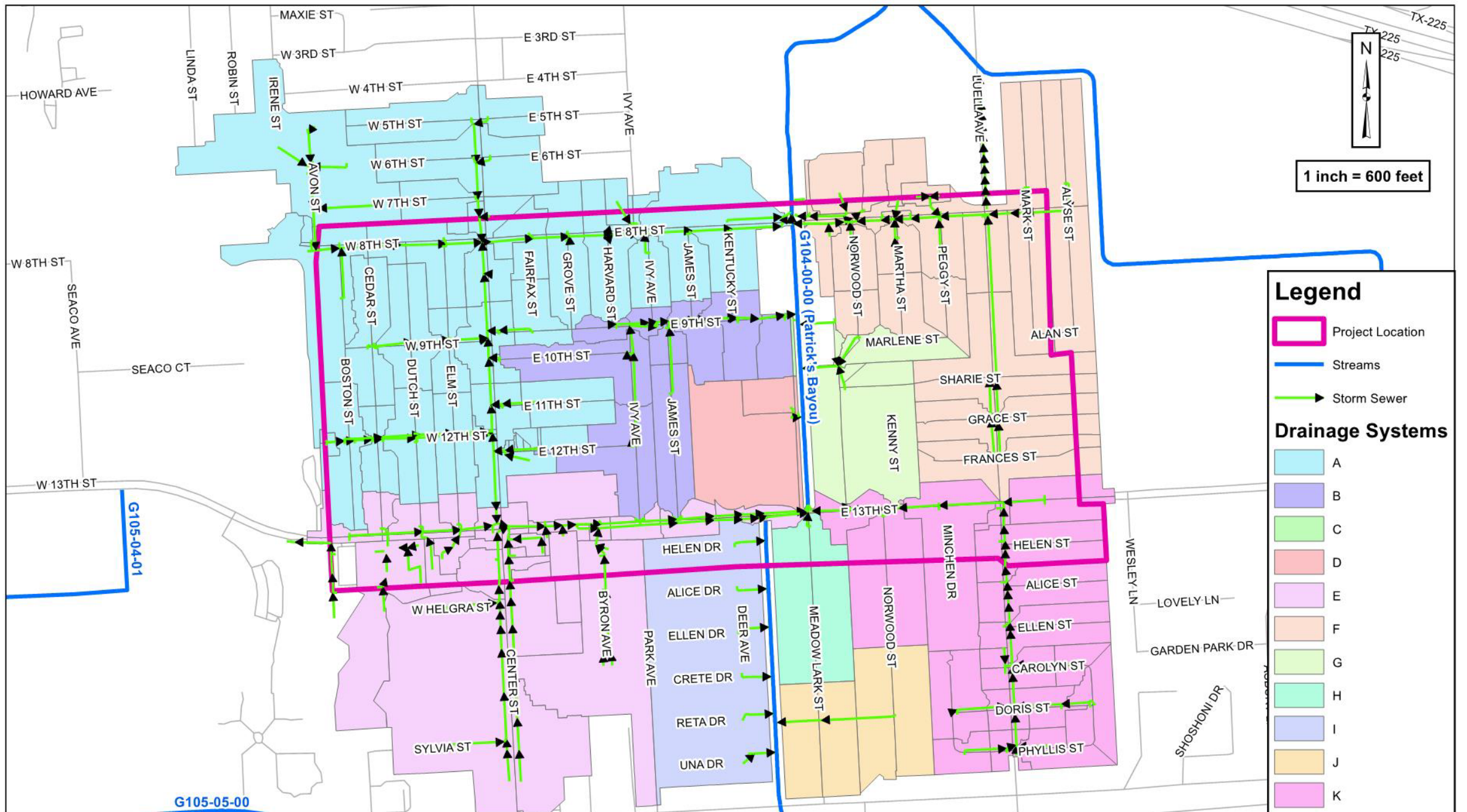
Area Overview

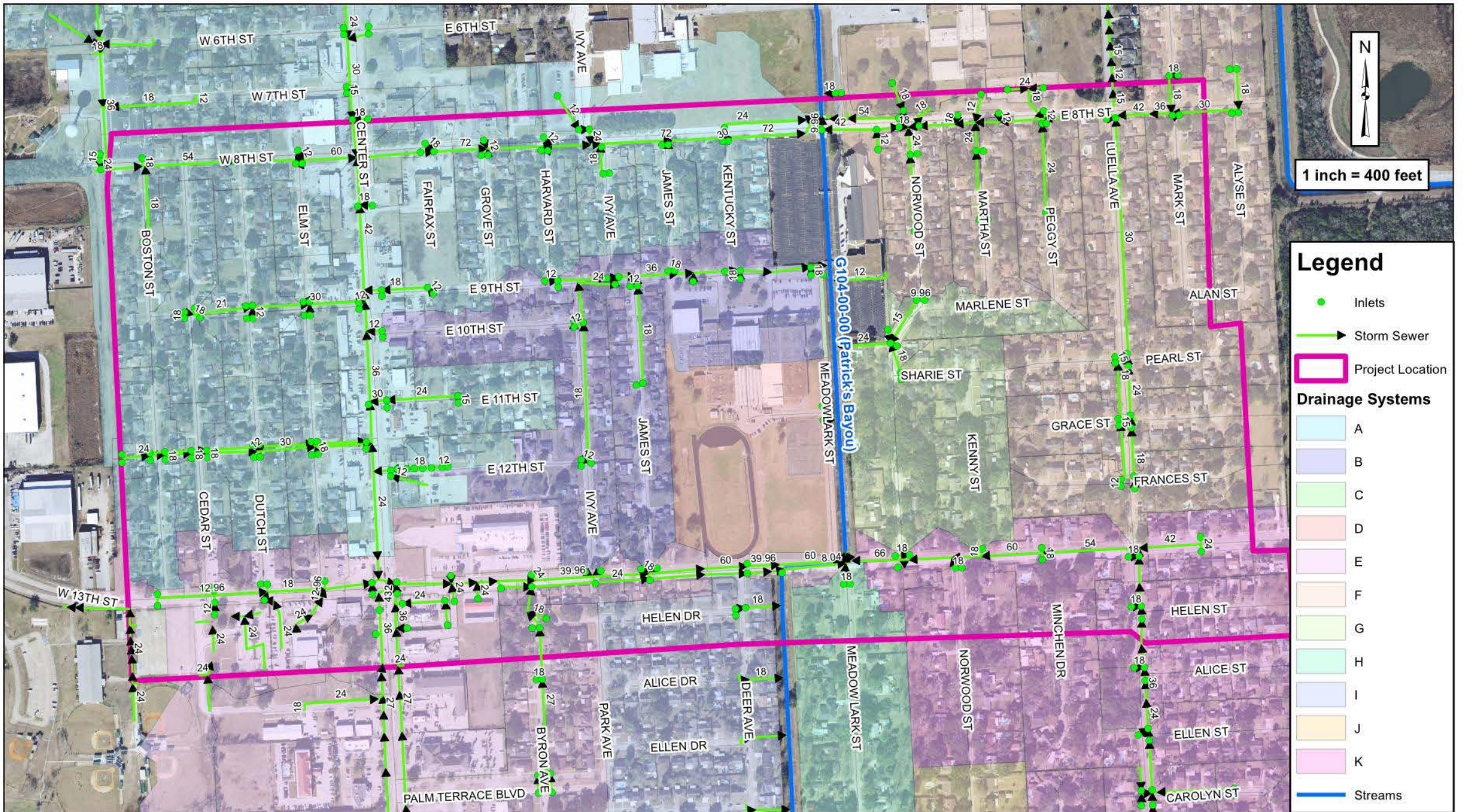


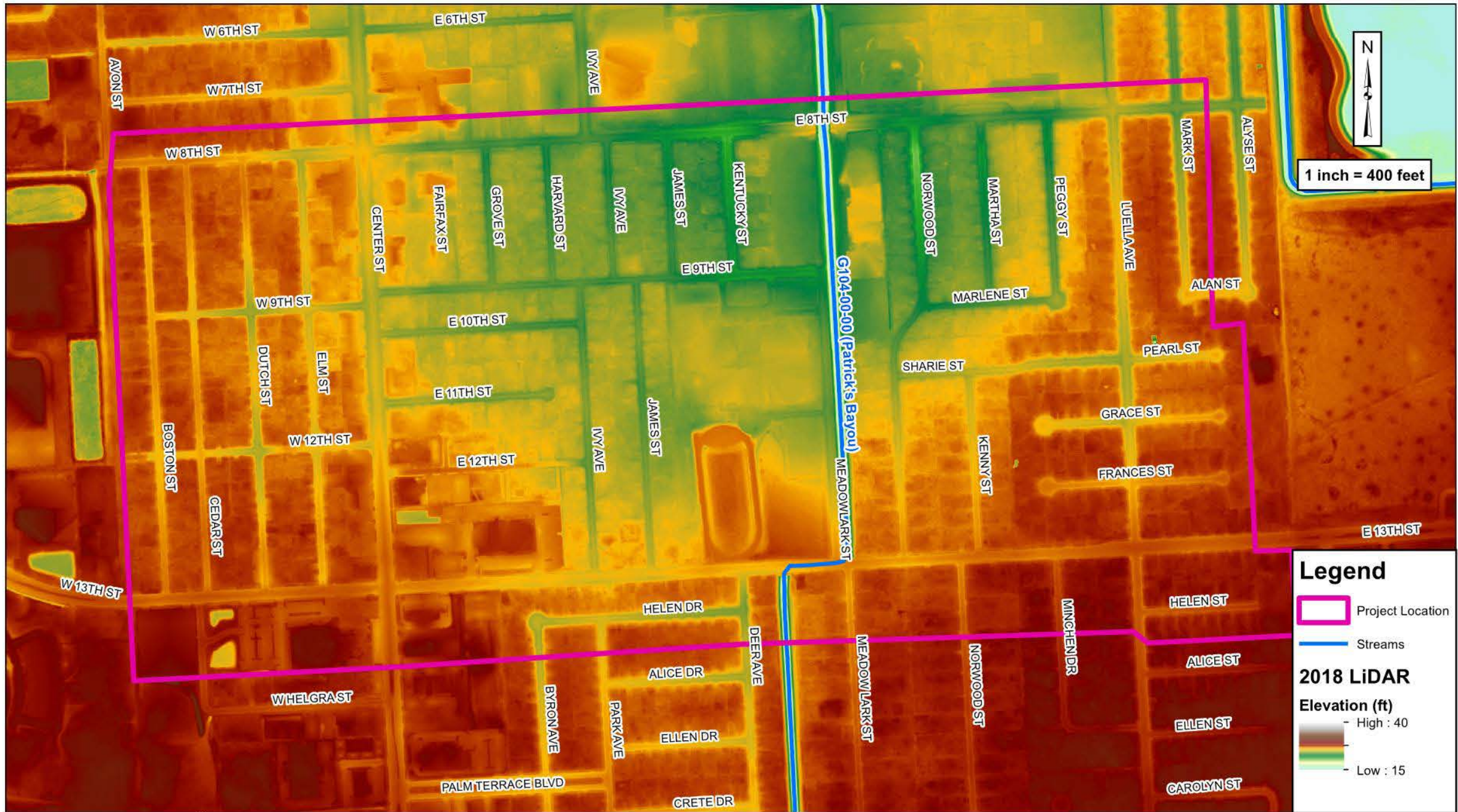
Deer Park Gardens

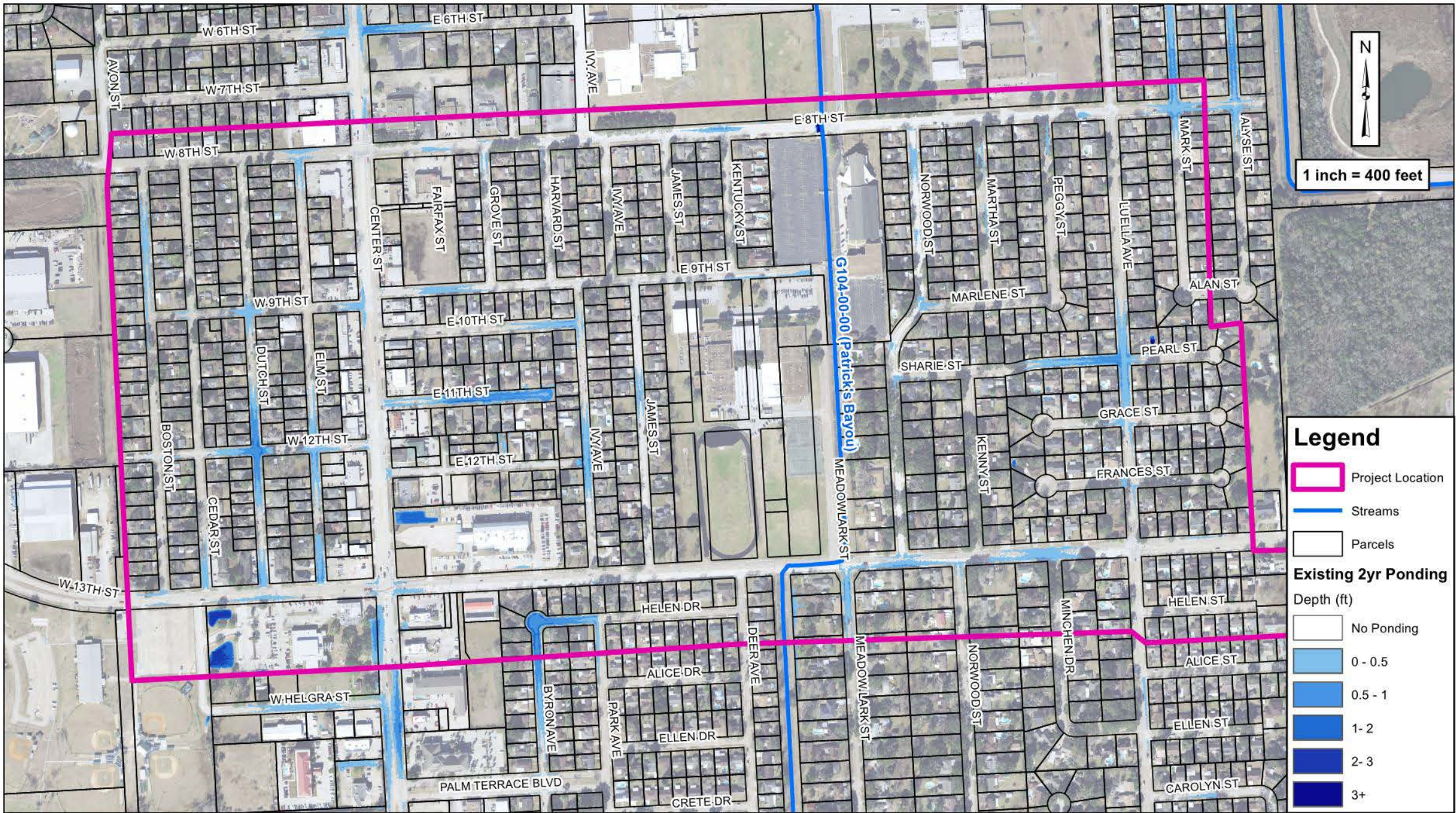


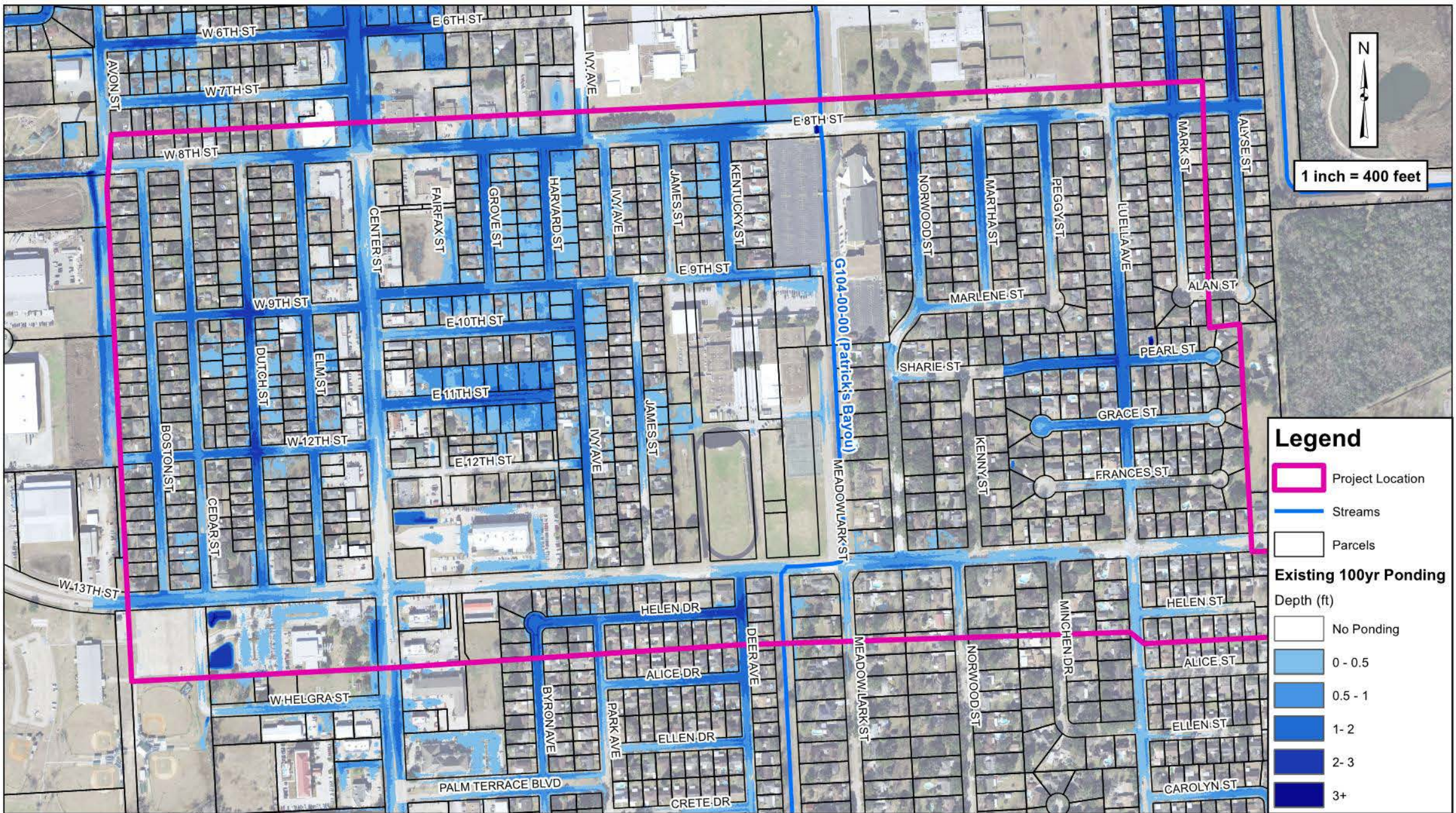


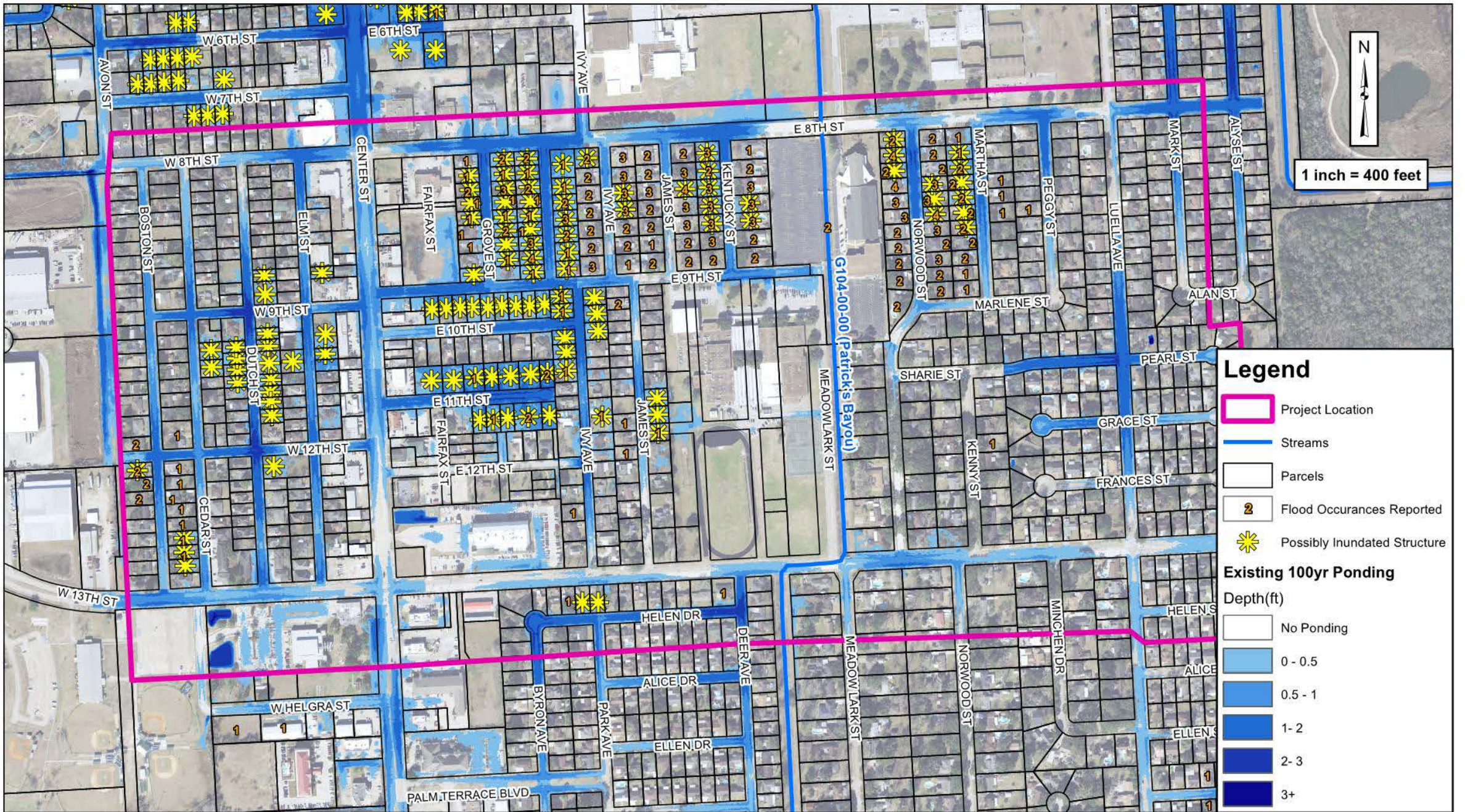






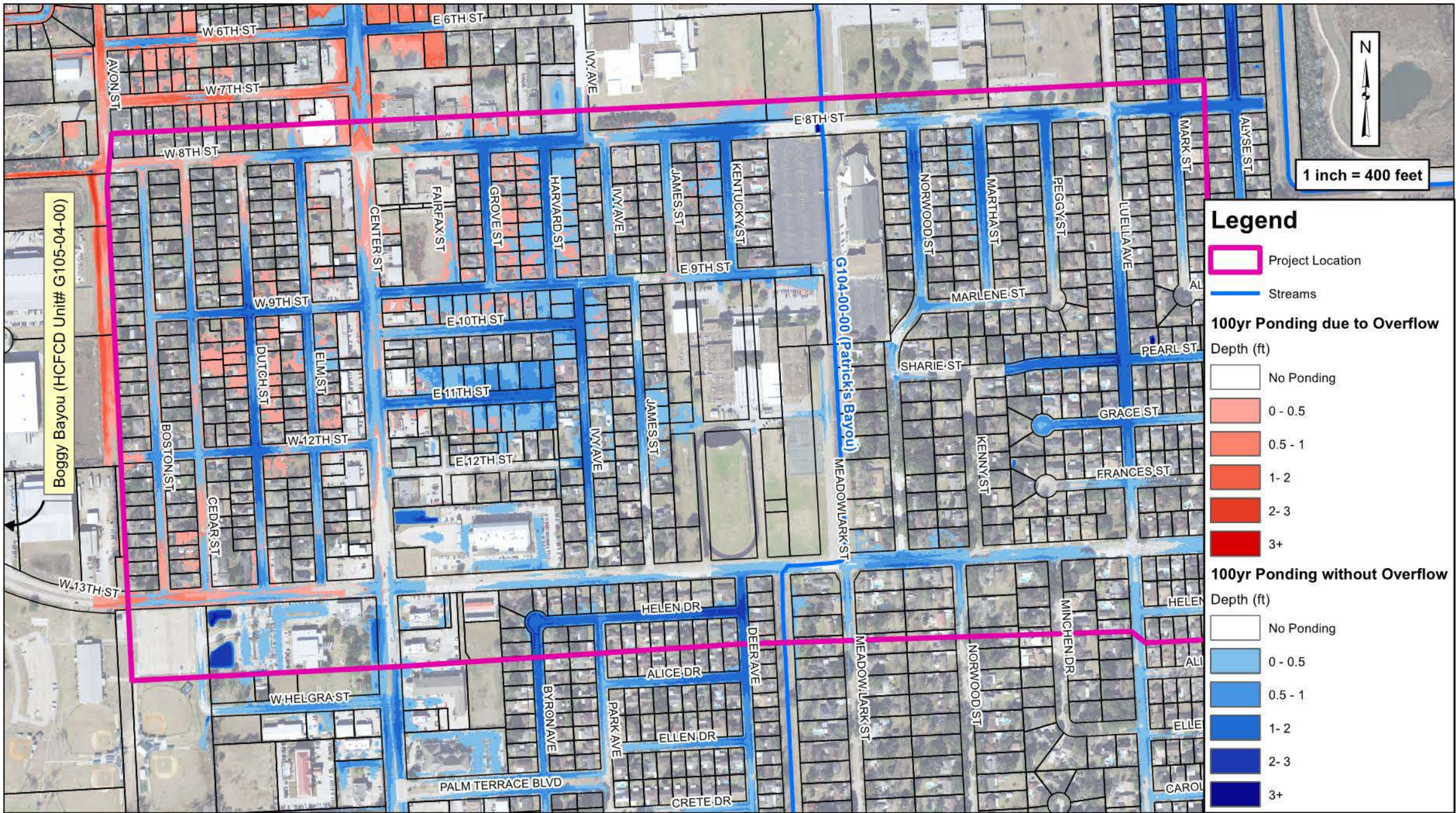






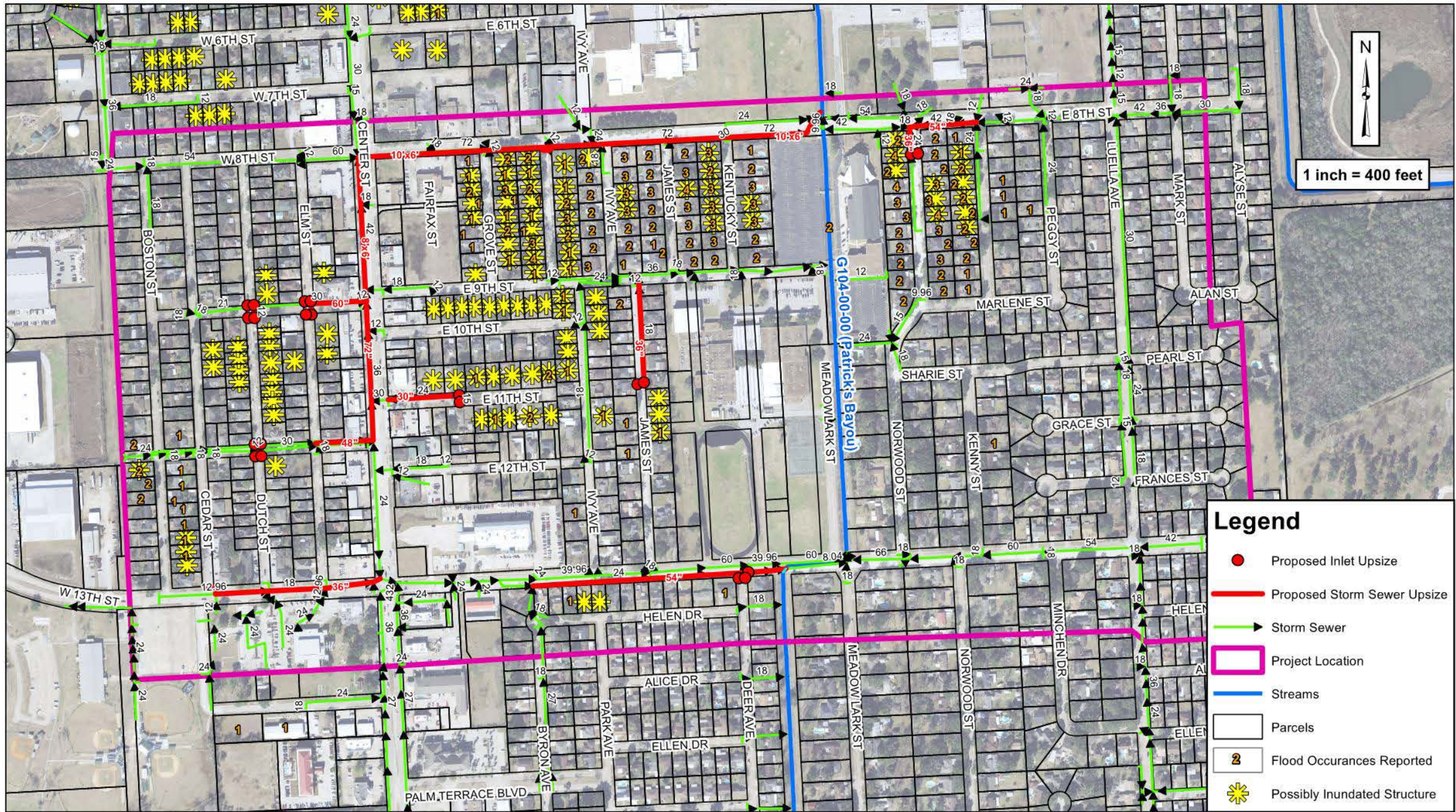
1 inch = 400 feet





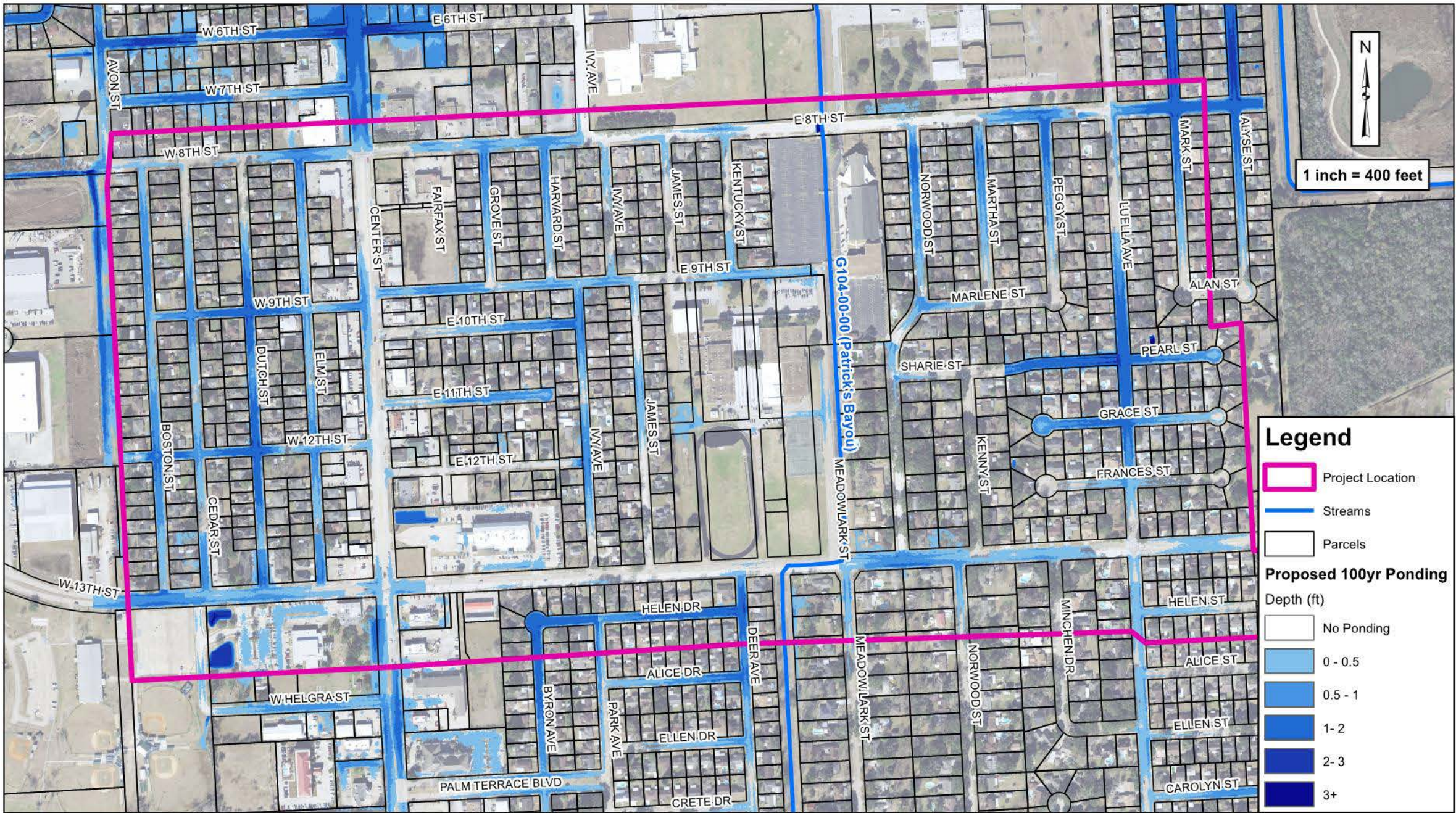
Boggy Bayou (HCFCD Unit# G105-04-00)

G104-00-00 (Patrick's Bayou)



- Legend**
- Proposed Inlet Upsize
 - Proposed Storm Sewer Upsize
 - Storm Sewer
 - Project Location
 - Streams
 - Parcels
 - Flood Occurances Reported
 - Possibly Inundated Structure

City of Deer Park - Deer Park Gardens
Proposed Improvements



Need Approximately 38 ac-ft Detention
to Mitigate Entire Project

