

REF VIN 198523

ATTENTION:
ATC IS NOT RESPONSIBLE FOR CLEARANCE OF VEHICLE
UNTIL CUSTOMER/DEALER COMPLETES VEHICLE CLEARANCE
FORM AND IS VERIFIED BY ATC ENGINEERING DEPARTMENT.

**DIMENSIONS ARE NOMINAL. STRUCTURAL MEMBERS OFTEN DICTATE
WHERE INTERIOR FEATURES CAN BE PLACED. CONSEQUENTLY, SOME
DIMENSIONED ITEMS RETAIN A +/- 2" TOLERANCE. CRITICAL (BUBBLED)
DIMENSIONS WILL RETAIN A TOLERANCE OF +/- 1/4".**

BOM TABLE				
ITEM NO	PART NO	FILE NAME	DESCRIPTION	QTY
1		AIRCONDITIONER	15,000 BTU - GE (3)	2
2		ANTENNA RAIL-223472	84"	1
3		AWNING-223472	25ft LCI Power	1
4		AXLE - TORSION-SIMPLIFIED	6000#, HF-93 OB-78, 22.5° Up	2
5		BATTERY	AGM, 775 CCA	4
7		BOGEY WHEEL	BOGEY WHEEL	2
8		BRACE, FASTCAP	15x18 FastCap Brace	10
9	48260	BREAKER BOX	50 AMP WITH CONVERTER	1
12		CABLE ENTRY, ROOF BOX-223472		1
17	65525	COUPLER - A-FRAME	21K - 2 5/16" BALL	1
21		FIRE EXTINGUISHER		1
22		FUEL FILL		1
23		FURNACE	35K BTU (SF-35)	1
26		GEN START, FUEL GAUGE		1
27		GENERATOR	7.0 KW ONAN GAS	1
28		GRAB HANDLE	GRAB HANDLE - LIGHTED	2
29		JACK - TONGUE	3.5K - POWER	1
30		LADDER, STRAIGHT		1
31		LIGHT, CEILING - SURFACE MOUNT		12
32	131501	LIGHT, LED SCENE	10V-14V - 2300 Lumen	4
33		LIGHT, PUCK	LED	4
34		LP DETECTOR		1
35		LP TANKS	(2) 20# TANKS	1
36		MOTORBASE	50 AMP	1
37		OUTLET STRIP		2
38		OUTLET, ELECTRICAL	120V 15A EXTERIOR	1
39	11978	OUTLET, ELECTRICAL	120V 15A INTERIOR	9
40	11978	OUTLET, ELECTRICAL	120V 15A INT-DEDICATED	2
41		OUTLET, ELECTRICAL	CAT6 - 1 PLUG	9
42		SCISSOR JACK	24"- 5000#	4
43		STEP ASSY, AL - SLIDE IN-OUT		1
44		TANK, FUEL	28 GAL END FILL(ST24-1)G	1
45		THERMOSTAT	AC, GE	2
46		TIRES	235/80/16	4
47		TRANSFER SWITCH	50 AMP	1
48		VENT, ROUND		4
49		WHEEL WELL - AL	8.5 x 12.0 x 80.0	2

**ALL LOCATIONS ARE NOMINAL UNLESS CRITICAL
DIMENSIONS ARE SPECIFICALLY NOTED**

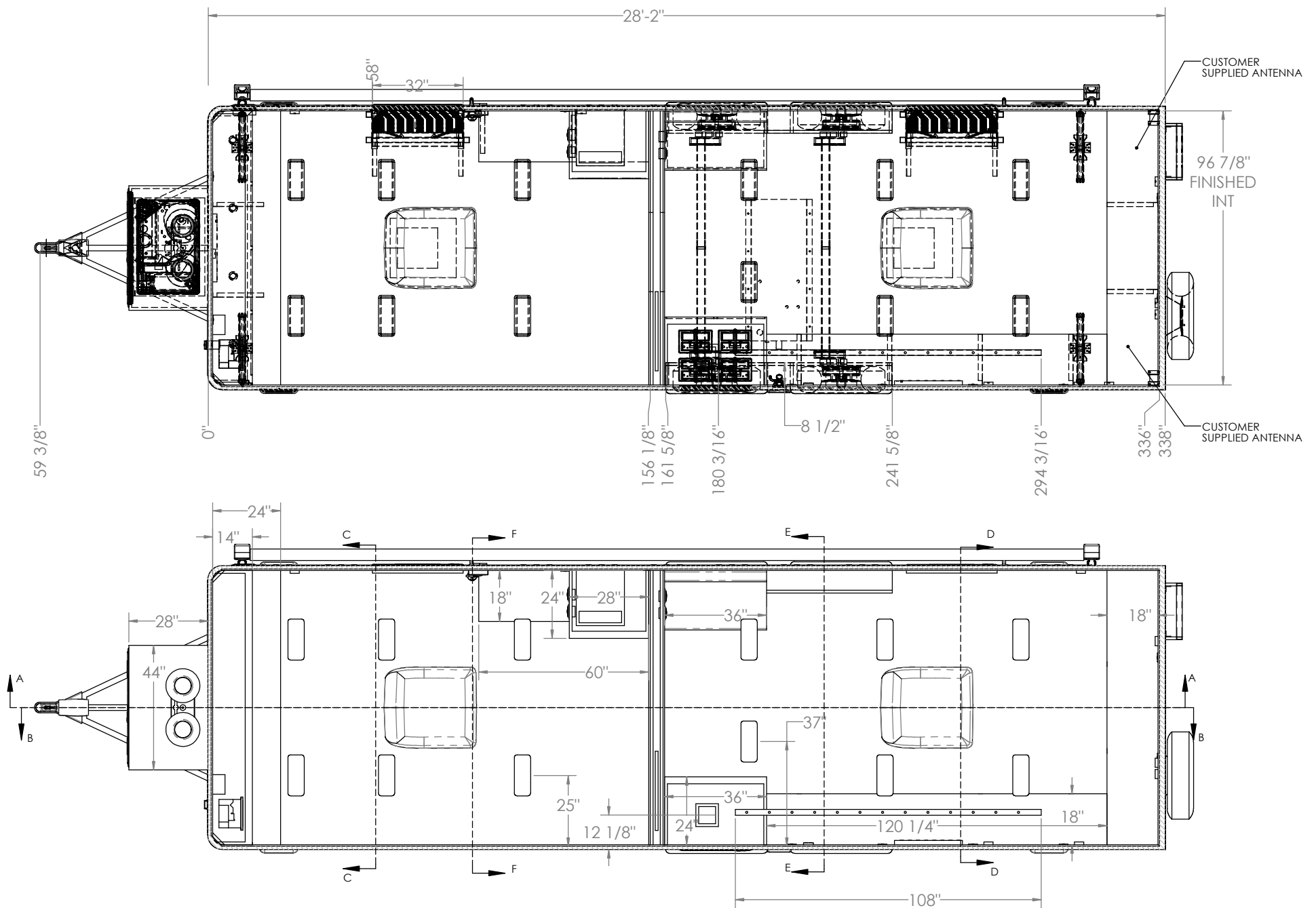
PROPRIETARY AND CONFIDENTIAL:
THE INFORMATION CONTAINED IN THIS DRAWING IS THE SOLE
PROPERTY OF THE ALUMINUM TRAILER COMPANY. ANY
REPRODUCTION IN PART OR AS A WHOLE WITHOUT THE WRITTEN
PERMISSION OF THE ALUMINUM TRAILER COMPANY IS PROHIBITED.



TITLE: 8.5' x 28' QUEST ALUMINUM BP			
DRAWN BY: HTY	DATE: 03/02/21	VIN/PART # 223472	REV. B
FILE NAME: DW-BP 8528-MGD-DEER PARK-223472			
SCALE: 1:21	DATE PRINTED: 5/3/2021	SHEET 1 OF 6	

REVISION TABLE			
REV.	DESCRIPTION	DATE	DONE BY
A	ADJUSTED CEILING LIGHTS; REMOVED WINDOWS; ADDED ACCESS DOOR; REMOVED TUBE FRAMED CABINET; ADDED TV LOCATIONS; MOVED FURNACE; ADDED NOTES AND DIMENSIONS	3/26/2021	HTY
B	ADJUSTED CABLE NOTES	5/3/2021	HTY

DWG PATH: C:\Eng_Vault\Master Records\VIN\223 VINS\223472\

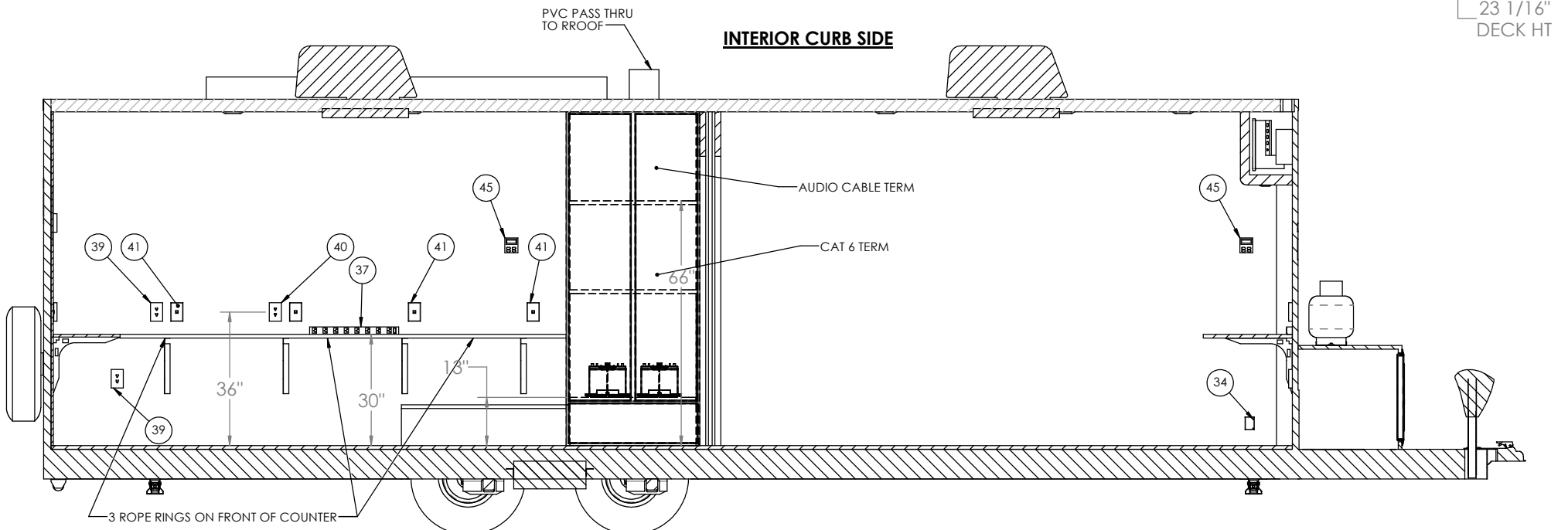
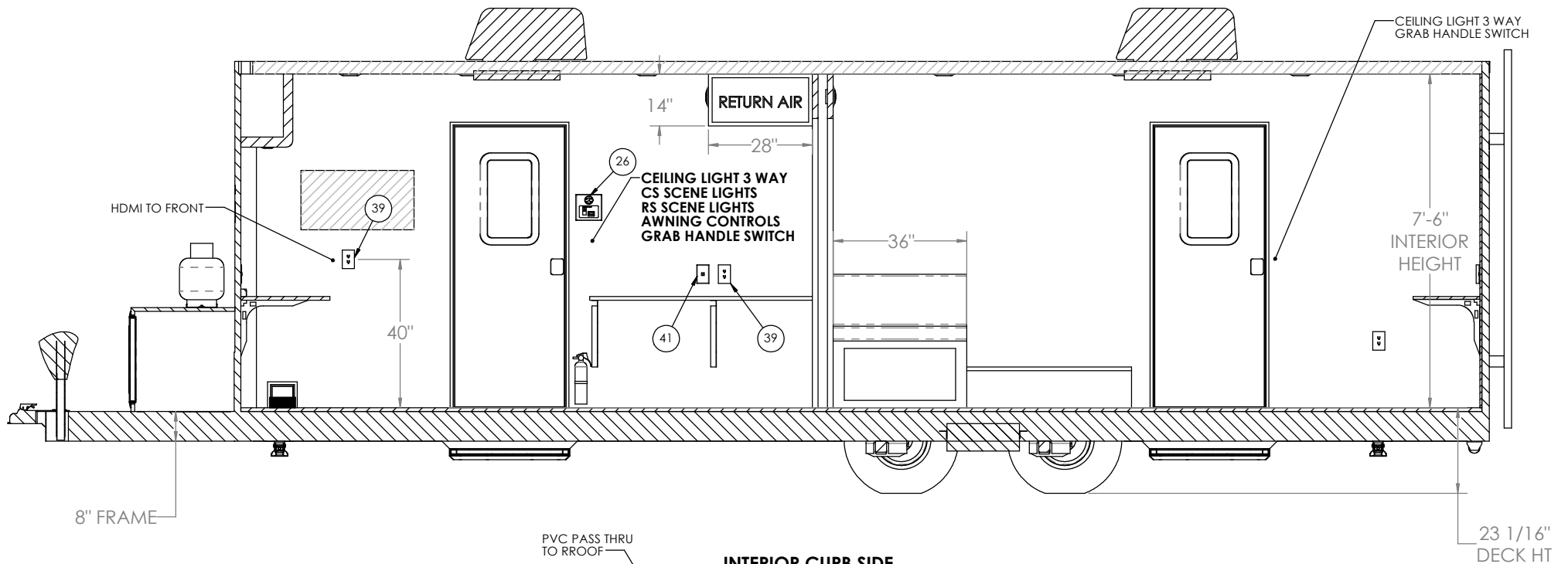


ALL LOCATIONS ARE NOMINAL UNLESS CRITICAL DIMENSIONS ARE SPECIFICALLY NOTED

PROPRIETARY AND CONFIDENTIAL:
THE INFORMATION CONTAINED IN THIS DRAWING IS THE SOLE
PROPERTY OF THE ALUMINUM TRAILER COMPANY. ANY
REPRODUCTION IN PART OR AS A WHOLE WITHOUT THE WRITTEN
PERMISSION OF THE ALUMINUM TRAILER COMPANY IS PROHIBITED.



TITLE: 8.5' x 28' QUEST ALUMINUM BP
DRAWN BY: HTY DATE: 03/02/21 VIN/PART # 223472 REV. B
FILE NAME: DW-BP 8528-MGD-DEER PARK-223472
SCALE: 1:23 DATE PRINTED: 5/3/2021 SHEET 2 OF 6



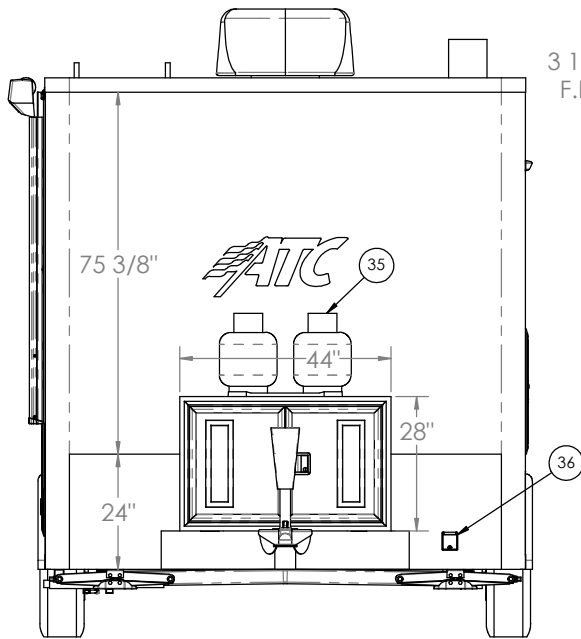
INTERIOR ROAD SIDE

ALL LOCATIONS ARE NOMINAL UNLESS CRITICAL DIMENSIONS ARE SPECIFICALLY NOTED

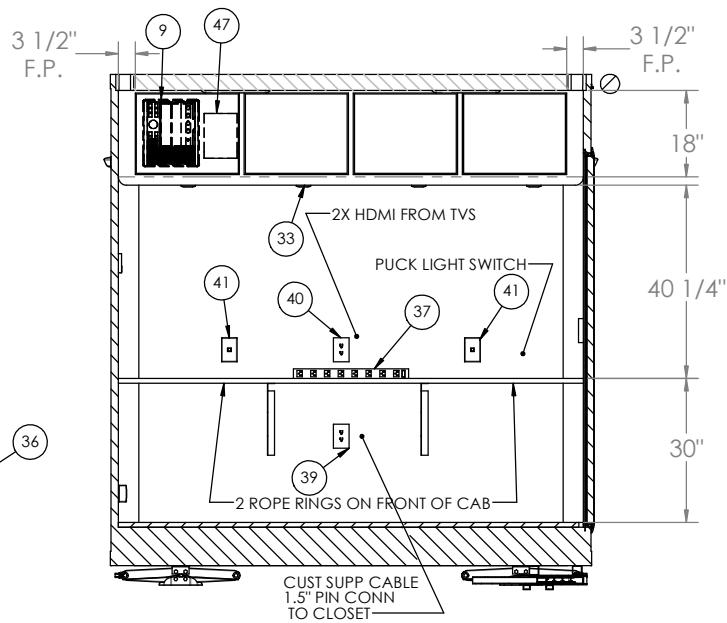
PROPRIETARY AND CONFIDENTIAL:
THE INFORMATION CONTAINED IN THIS DRAWING IS THE SOLE
PROPERTY OF THE ALUMINUM TRAILER COMPANY. ANY
REPRODUCTION IN PART OR AS A WHOLE WITHOUT THE WRITTEN
PERMISSION OF THE ALUMINUM TRAILER COMPANY IS PROHIBITED.



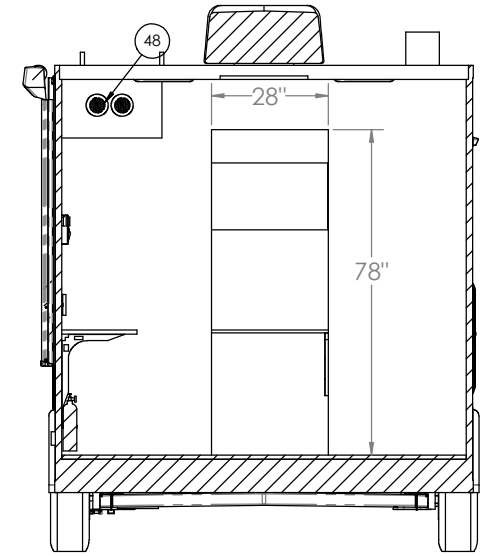
TITLE: 8.5' x 28' QUEST ALUMINUM BP			
DRAWN BY: HTY	DATE: 03/02/21	VIN/PART # 223472	REV. B
FILE NAME: DW-BP 8528-MGD-DEER PARK-223472			
SCALE: 1:20	DATE PRINTED: 5/3/2021	SHEET 3 OF 6	



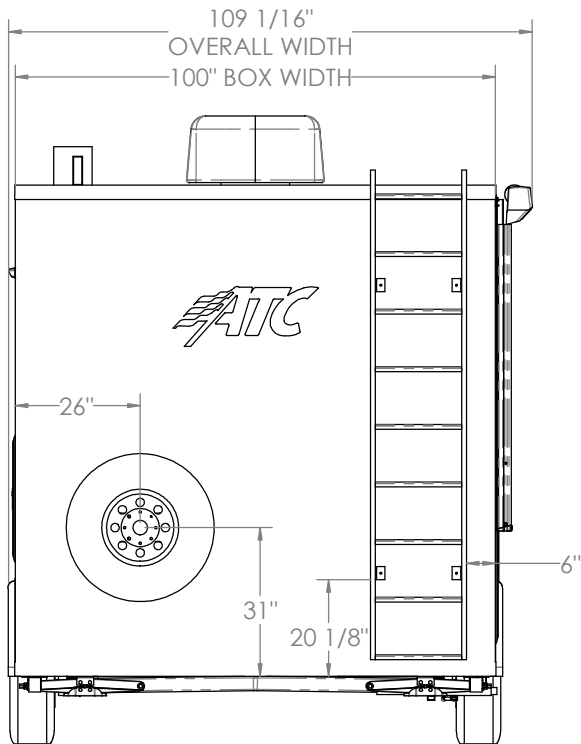
EXTERIOR FRONT



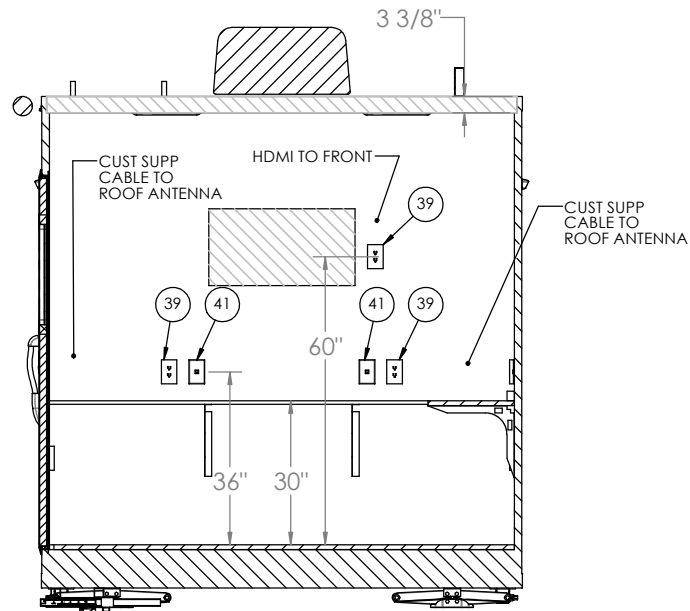
INTERIOR FRONT



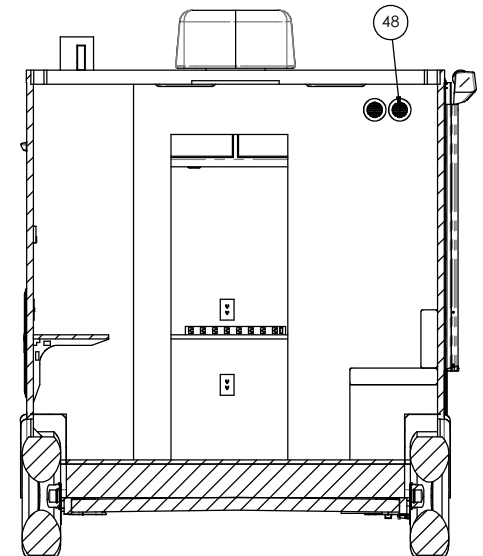
SECTION F-F



EXTERIOR REAR



INTERIOR REAR



SECTION E-E

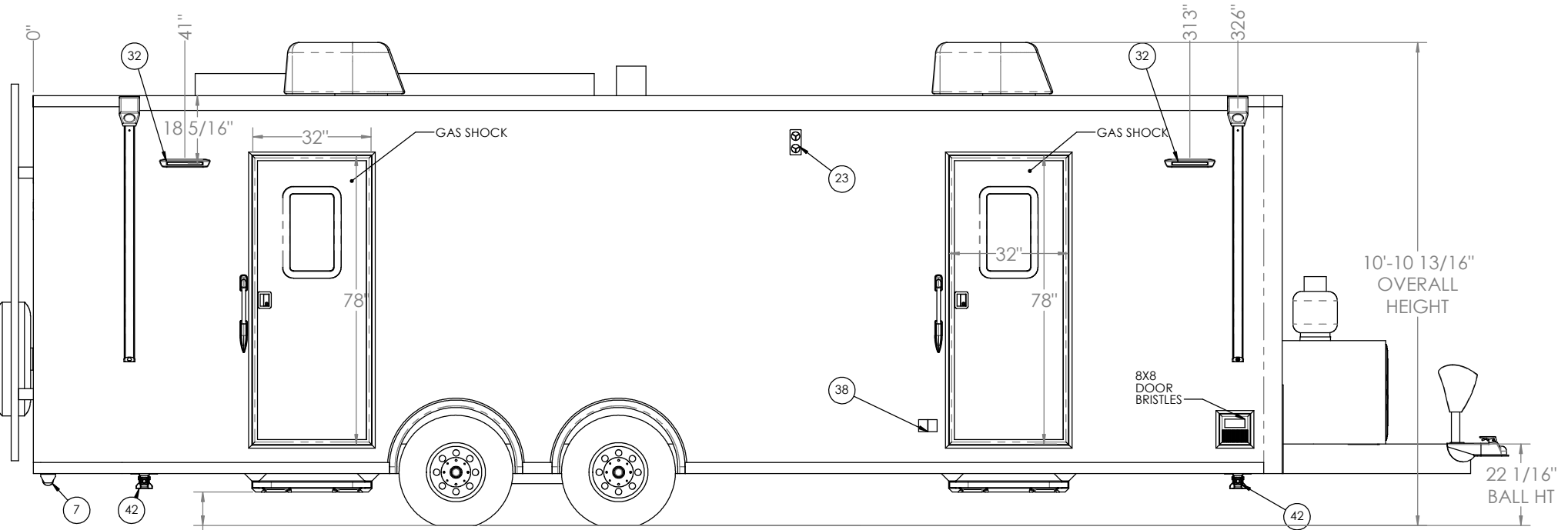
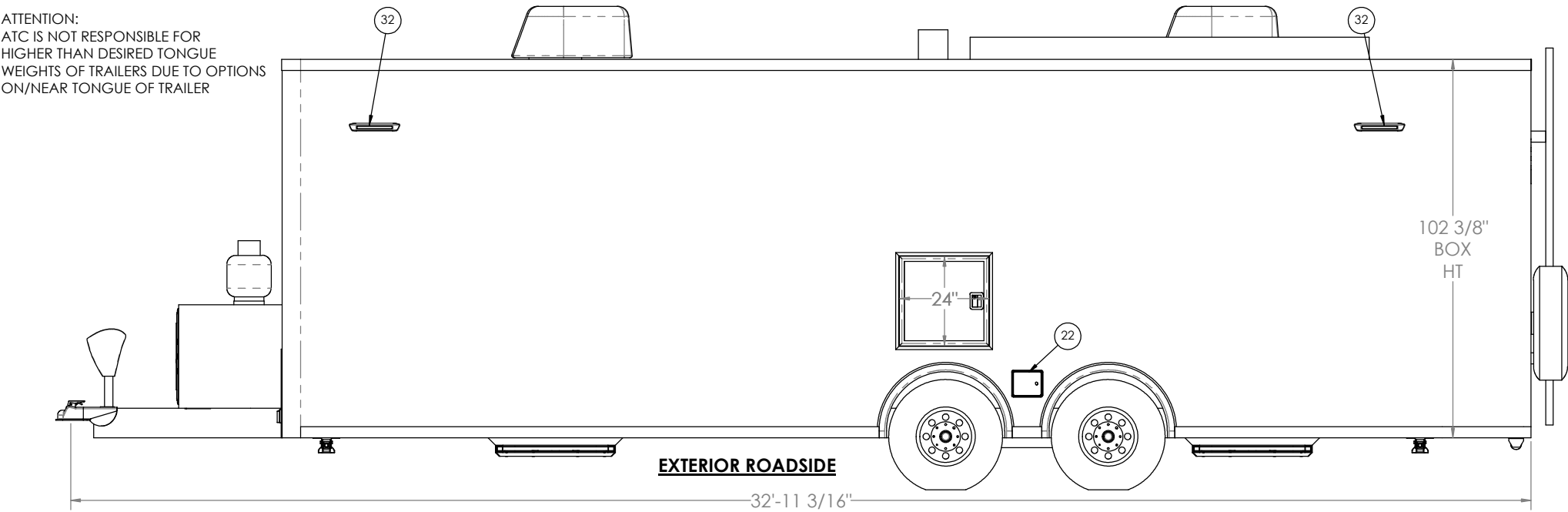
ALL LOCATIONS ARE NOMINAL UNLESS CRITICAL DIMENSIONS ARE SPECIFICALLY NOTED

PROPRIETARY AND CONFIDENTIAL:
THE INFORMATION CONTAINED IN THIS DRAWING IS THE SOLE
PROPERTY OF THE ALUMINUM TRAILER COMPANY. ANY
REPRODUCTION IN PART OR AS A WHOLE WITHOUT THE WRITTEN
PERMISSION OF THE ALUMINUM TRAILER COMPANY IS PROHIBITED.



TITLE: 8.5' x 28' QUEST ALUMINUM BP
DRAWN BY: HTY DATE: 03/02/21 VIN/PART # 223472 REV. B
FILE NAME: DW-BP 8528-MGD-DEER PARK-223472
SCALE: 1:20 DATE PRINTED: 5/3/2021 SHEET 4 OF 6

ATTENTION:
ATC IS NOT RESPONSIBLE FOR
HIGHER THAN DESIRED TONGUE
WEIGHTS OF TRAILERS DUE TO OPTIONS
ON/NEAR TONGUE OF TRAILER



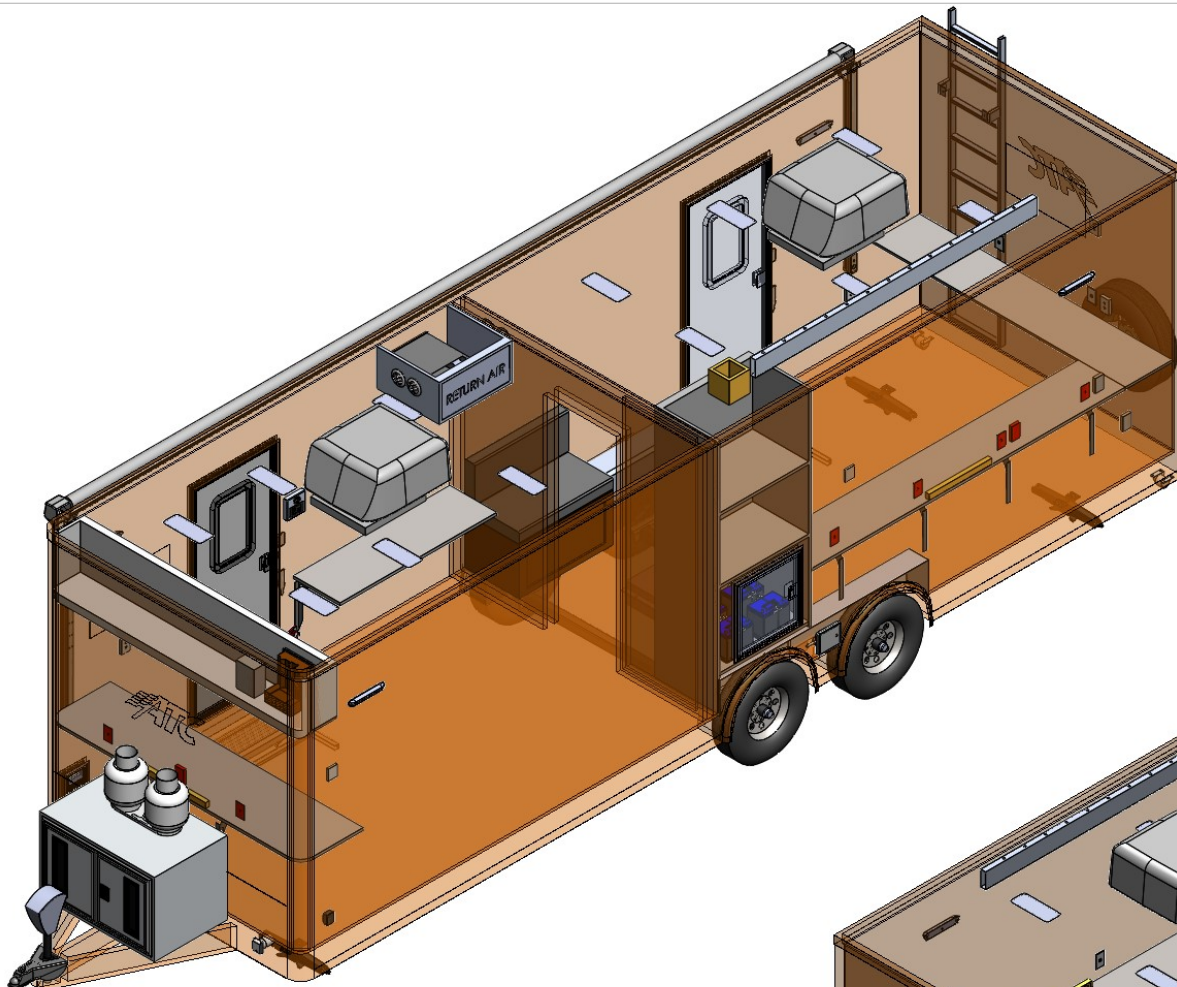
ALL LOCATIONS ARE NOMINAL UNLESS CRITICAL
DIMENSIONS ARE SPECIFICALLY NOTED

PROPRIETARY AND CONFIDENTIAL:
THE INFORMATION CONTAINED IN THIS DRAWING IS THE SOLE
PROPERTY OF THE ALUMINUM TRAILER COMPANY. ANY
REPRODUCTION IN PART OR AS A WHOLE WITHOUT THE WRITTEN
PERMISSION OF THE ALUMINUM TRAILER COMPANY IS PROHIBITED.

EXTERIOR CURB SIDE



TITLE: 8.5' x 28' QUEST ALUMINUM BP			
DRAWN BY: HTY	DATE: 03/02/21	VIN/PART # 223472	REV. B
FILE NAME: DW-BP 8528-MGD-DEER PARK-223472			
SCALE: 1:20	DATE PRINTED: 5/3/2021	SHEET 5 OF 6	



ROAD SIDE VIEW



CURB SIDE VIEW

**ALL LOCATIONS ARE NOMINAL UNLESS CRITICAL
DIMENSIONS ARE SPECIFICALLY NOTED**

PROPRIETARY AND CONFIDENTIAL:
THE INFORMATION CONTAINED IN THIS DRAWING IS THE SOLE
PROPERTY OF THE ALUMINUM TRAILER COMPANY. ANY
REPRODUCTION IN PART OR AS A WHOLE WITHOUT THE WRITTEN
PERMISSION OF THE ALUMINUM TRAILER COMPANY IS PROHIBITED.



TITLE: 8.5' x 28' QUEST ALUMINUM BP			
DRAWN BY: HTY	DATE: 03/02/21	VIN/PART # 223472	REV. B
FILE NAME: DW-BP 8528-MGD-DEER PARK-223472			
SCALE: 1:26	DATE PRINTED: 5/3/2021	SHEET 6 OF 6	