

710 EAST SAN AUGUSTINE STREET

DEER PARK, TEXAS 77536

Minutes

of

A WORKSHOP MEETING OF THE CITY COUNCIL OF THE CITY OF DEER PARK, TEXAS HELD AT CITY HALL, 710 EAST SAN AUGUSTINE STREET, DEER PARK, TEXAS ON MAY 21, 2019, BEGINNING AT 6:15 P.M., WITH THE FOLLOWING MEMBERS PRESENT:

JERRY MOUTON, JR.
SHERRY GARRISON
TJ HAIGHT
TOMMY GINN
BILL PATTERSON
RON MARTIN
RAE SINOR

MAYOR
COUNCILWOMAN
COUNCILMAN
COUNCILMAN
COUNCILMAN
COUNCILMAN
COUNCILWOMAN

OTHER CITY OFFICIALS PRESENT:

JAY STOKES
GARY JACKSON
SHANNON BENNETT
JIM FOX

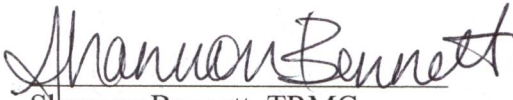
CITY MANAGER
ASSISTANT CITY MANAGER
CITY SECRETARY
CITY ATTORNEY

1. MEETING CALLED TO ORDER – Mayor Mouton called the workshop to order at 6:15 p.m.
2. EXECUTIVE SESSION – PERSONNEL – Mayor Mouton recessed the workshop meeting at 6:15 p.m. for an Executive Session.
3. RECONVENED – Mayor Mouton reconvened the workshop meeting at 6:25 p.m.
4. PRESENTATION OF THE DEER PARK DRAINAGE ANALYSIS OF VARIOUS LOCATIONS BY COBB FENDLEY – Carl Ahrenat of Cobb Fendley gave an overview of the drainage analysis for the various locations including Heritage Addition 2, Deer Meadows Section 2, Deer Park Manor and Delo-Elaine Section 2. The analyzation consisted of using the rational method to determine flows and small watershed method to create hydrographs, utilizing provided plans to obtain storm sewer information. (Exhibit A1-A7)
5. DISCUSSION OF ISSUES RELATING TO THE UPDATE ON THE DEER PARK NATURE PRESERVE – Charlie Sandberg gave an overview of the Deer Park Nature Reserve and the time line of events that were completed in the fall of 2018. The project was experiencing unexpected flooding and a drainage swale was constructed to help

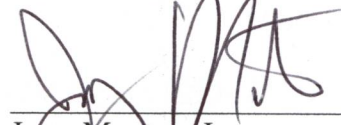
relieve the flooding and dry the sections of trail. Parks and Recreation Parks Supervisor Tiffany McGallian discussed the 150 foot boardwalk approved by the Parks and Recreation Commission, that is being constructed along a section of the trail to allow patrons to access the trail after significant rainfall. (Exhibit B1-B4)

6. DISCUSSION OF ISSUES RELATING TO THE QUARTERLY FINANCIAL REPORT FOR THE FISCAL YEAR 2018-2019 SECOND QUARTER ENDED MARCH 31, 2019 – Finance Director Donna Todd gave an overview of the budget funds for the second quarter, highlighting the expenditures and revenues of each fund.
7. DISCUSSION OF ISSUES RELATING TO THE AUTHORIZATION TO PURCHASE PHASE 2 AND PHASE 3 OF THE WHELEN OUTDOOR SIREN SYSTEM UPGRADE FROM CROSSPOINT COMMUNICATIONS THROUGH THE BUYBOARD COOPERATIVE PURCHASING PROGRAM AND AUTHORIZING THE USE OF THE ASSIGNED FUND BALANCE – Emergency Services Director Robert Hemminger discussed the LEPC decision to replace all outdoor warning sirens over the course of the next three (3) years. Due to operational issues with many of these sirens, especially during the ITC incidents, it is recommended they all be replaced immediately. The total project cost is \$112,590.19, which will be funded out of the fund balanced assigned for Disaster Response/Repair. The LEPC will then reimburse the City of Deer Park over the next two years. The LEPC has hired Crosspoint Communications to complete the project.
8. ADJOURN – Mayor Mouton adjourned the workshop meeting at 7:02 p.m.

ATTEST:


Shannon Bennett, TRMC
City Secretary

APPROVED:

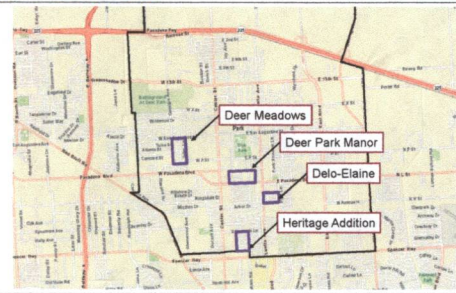

Jerry Mouton, Jr.
Mayor

DEER PARK

May 21, 2019

CobbFendley

Area Overview

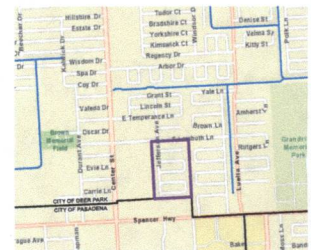


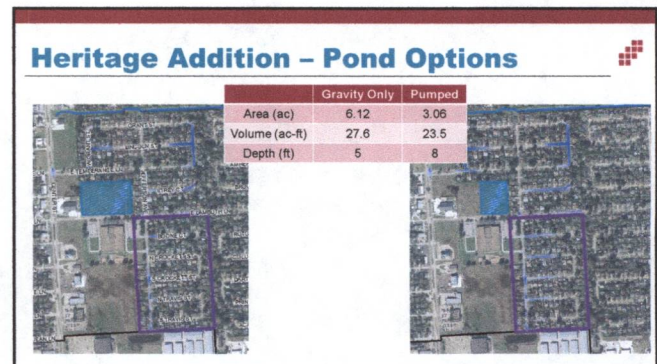
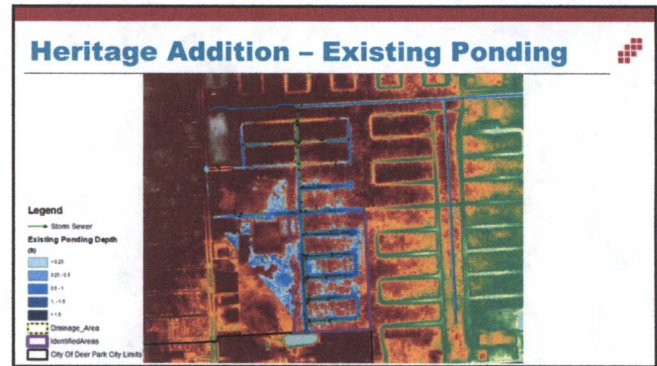
Heritage Addition



Heritage Addition – Existing Condition

- Small Lot Residential
- Approximately 31 acres
- Existing Storm Sewer
 - Mostly Arch Pipes
 - Parallel system
- Outfalls to B112-03-00 (Center St Ditch)
- Neighborhood north of E Lambuth Ln is higher





Deer Meadows

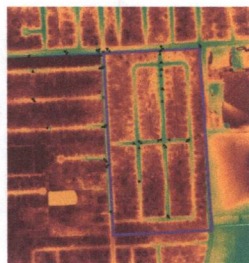


Deer Meadows- Existing Condition

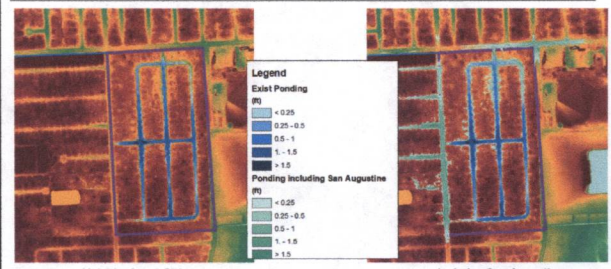
- Small Lot Residential
- Approximately 38 acres
- Existing Storm Sewer
 - Mostly Arch Pipes
 - Parallel system
 - Outfalls to storm sewer along San Augustine
 - Overflow Connection on the eastern side of Albany St
- Ultimately outfalls to G105-03-00 approximately 1.5 miles away



Deer Meadows - Existing Condition



Deer Meadows - Existing Ponding



Neighborhood Only

Includes San Augustine

Deer Meadows – Proposed Solution

- Replace internal storm sewer with larger pipes
- Internal Detention
 - 8.7 ac-ft storage volume
 - 10 ft deep



Deer Park Manor & Delo-Elaine

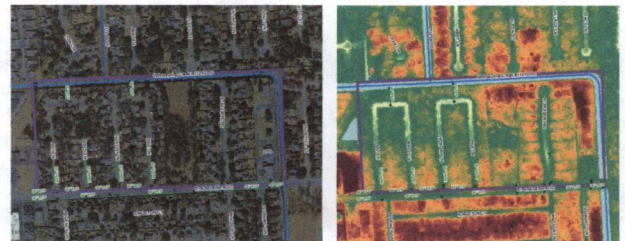


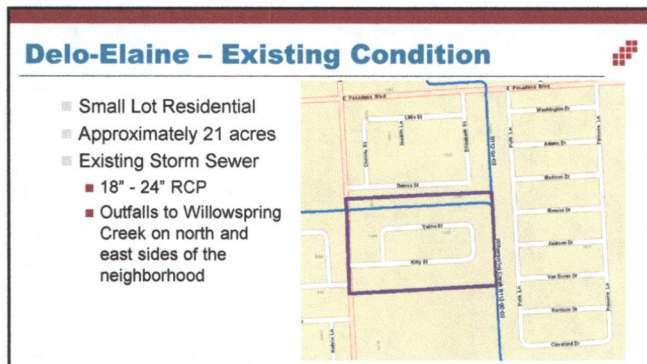
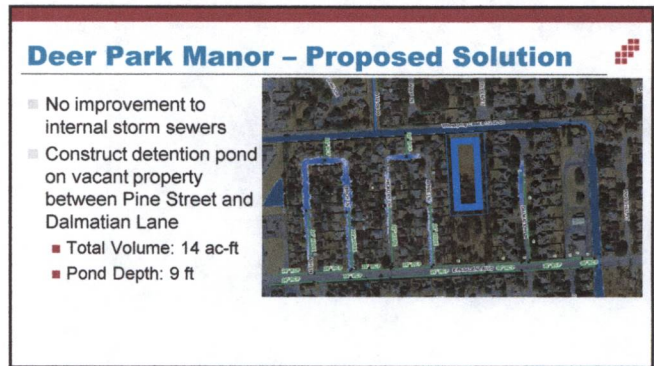
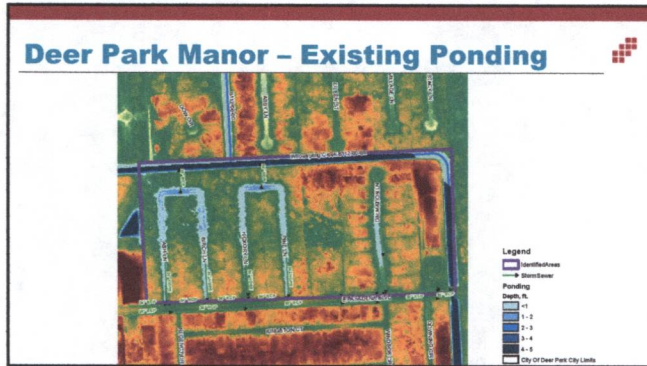
Deer Park Manor– Existing Condition

- Small Lot Residential
- Approximately 30 acres
- Existing Storm Sewer
 - Mostly 24" RCP
 - Outfalls to storm sewer along E Pasadena Blvd on south end
 - Outfalls to Willowspring Creek on north end

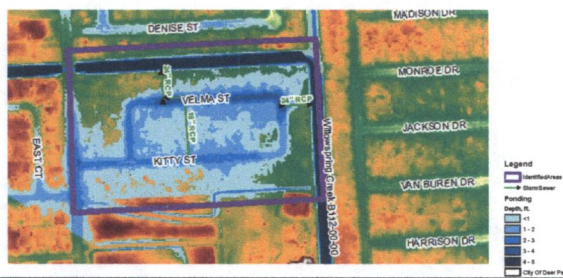


Deer Park Manor – Existing Condition

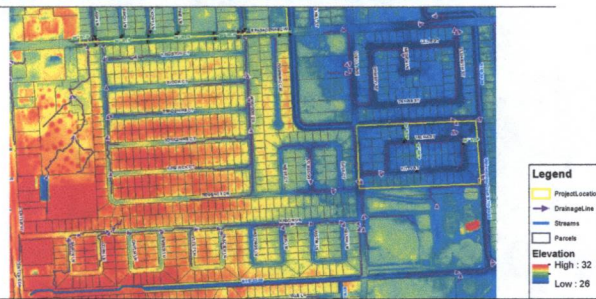




Delo- Elaine - Existing Ponding



Delo- Elaine - Overland Sheetflow



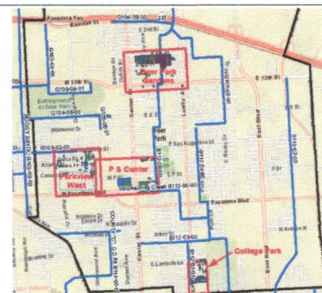
Delo-Elaine - Proposed Solution

- Disconnect 18" RCP to south on Velma St
- Construct new 24" RCP along Kitty St east to outfall into B112-00-00
- Construct overland sheetflow diversion channel just south of neighborhood

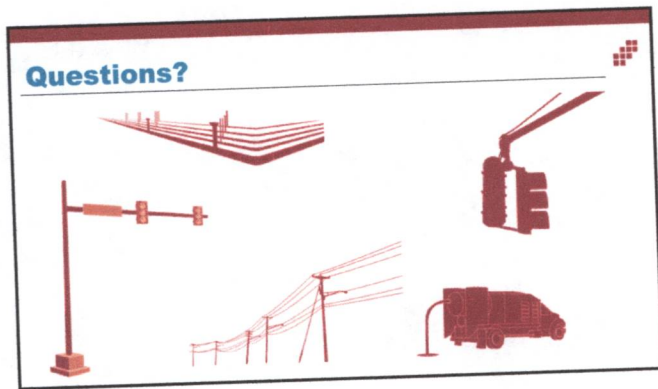


Additional Study Locations

- Perform Drainage Study and recommend proposed improvements to alleviate repetitive flooding in the following locations:
- Deer Park Gardens
- Parkview West
- P & Center
- College Park



Cobb, Fendley & Associates, Inc.





Deer Park Nature Preserve Update

City of Dee Park
Parks and Recreation Department

Overhead view of trails after completed construction



Overhead view of trails with significant flooding



Drainage swale created to assist with trail flooding



Overhead view of boardwalk



Boardwalk construction by PARD staff



Final steps

- Complete 150' section of boardwalk
- Contractor to complete invasive tallow removal by July 1, 2019
- Parks and Recreation staff to add decomposed granite to trails that have been disturbed by flooding or construction.
- Schedule and conduct a ribbon cutting for the facility.



Questions?

