

CITY OF DEER PARK

CC 81-07

710 EAST SAN AUGUSTINE STREET

DEER PARK, TEXAS 77536

Minutes

of

A WORKSHOP MEETING OF THE CITY COUNCIL OF THE CITY OF DEER PARK, TEXAS HELD AT CITY HALL, 710 EAST SAN AUGUSTINE STREET, DEER PARK, TEXAS ON AUGUST 4, 2020 BEGINNING AT 7:00 P.M., WITH THE FOLLOWING MEMBERS PRESENT:

JERRY MOUTON, JR.  
SHERRY GARRISON  
TJ HAIGHT  
TOMMY GINN  
BILL PATTERSON  
RON MARTIN  
RAE SINOR

MAYOR  
COUNCILWOMAN  
COUNCILMAN  
COUNCILMAN  
COUNCILMAN  
COUNCILMAN  
COUNCILWOMAN

OTHER CITY OFFICIALS PRESENT:

JAMES STOKES  
GARY JACKSON  
SHANNON BENNETT  
JIM FOX

CITY MANAGER  
ASSISTANT CITY MANAGER  
CITY SECRETARY  
CITY ATTORNEY

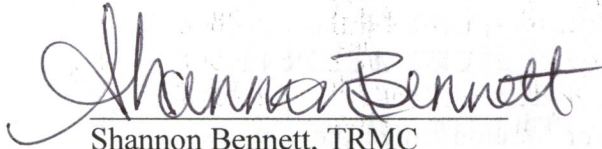
1. MEETING CALLED TO ORDER – Mayor Mouton called the workshop to order at 7:00 p.m.
2. COMMENTS FROM AUDIENCE – No comments received.
3. DISCUSSION OF ISSUES RELATING TO THE CONSTRUCTION UPDATE OF SHELL CREDIT UNION PARKING GARAGE AND SKYWALK –Chris Adams, from SLI Group, introduced SLI Group representatives, Brandon McGee, Ronny Guyote, Nicole Hernandez and Jose Rodriguez. Brandon McGee and Ronny Guyote presented details on the construction of the parking garage to Council. Mr. McGee advised Council of the ADS storm water detention system, spread footings, access road and the options of the timeline schedule for the sky bridge lift plan. The daytime plan includes traffic control set up to begin on Friday, October 2, 2020 at 10:00 a.m. to prepare for the following day. On Saturday October 3, 2020, work will begin at 8:00 a.m. with the crane arrival and will continue through the day setting the truss from garage to and between intermediate columns. Removal of the crane and traffic control should take place in the evening after 5:00 p.m. A nighttime lift was discussed, but is not the safest or most productive plan due to the noise disturbance to the residents with light towers in four corners and the traffic of eighteen wheelers moving in and out of the construction site and additional noise of chains and

sledgehammers. Road closures are proposed during the sky bridge lift to include full closure and partial closure during the construction. Mr. McGee advised Council of the Logistics Plan and presented the general functionality of the pedestrian tunnel, protective fencing, a temporary access drive for the credit union traffic, water filled barriers and netting, the weight of the crane pressure and the proposed Detour Plan during the construction. (Exhibit A1-A8)

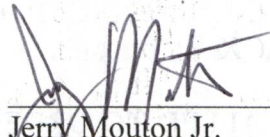
After a lengthy discussion, it is Council's preference to move forward with a daytime plan of construction of the Shell Credit Union parking garage and sky bridge.

4. DISCUSSION OF ISSUES RELATING TO AN AGREEMENT TO RENEW THE SCHOOL RESOURCE OFFICERS (SRO)/CROSSING GUARD INTER-LOCAL AGREEMENT WITH THE DEER PARK INDEPENDENT SCHOOL DISTRICT (DPISD) FOR THE 2020-2021 SCHOOL YEAR – Police Chief Greg Grigg advised Council that the contract has the same specifications as prior years and in addition, the Deer Park Independent School District has agreed to continue to pay the Crossing Guards 90% of their wages and the School Resource Officers 70% of their wages of the hours normally worked during the school year. The City has agreed to continue to pay the remaining 10% for the Crossing Guards, and 30% for the School Resource Officers.
5. ADJOURN – Mayor Mouton adjourned the workshop meeting at 7:29 p.m.

ATTEST:

  
Shannon Bennett, TRMC  
City Secretary

APPROVED:

  
Jerry Mouton Jr.  
Mayor





## PARKING GARAGE & SKY BRIDGE PROJECT

**DEER★PARK**  
*Birthplace of Texas®*

CITY COUNCIL WORKSHOP  
AUGUST 4, 2020



ADS Storm Water Detention System



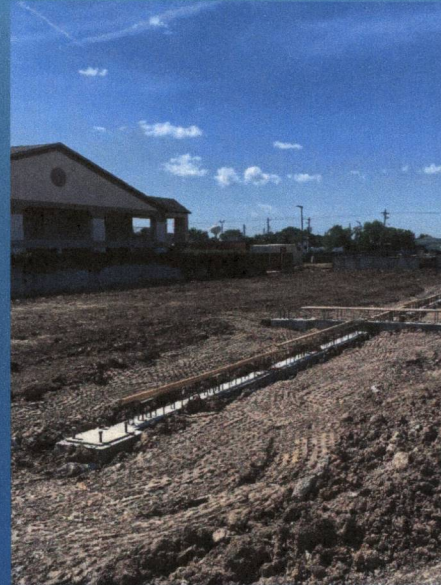


Shell  Federal  
CREDIT UNION



SLI

Shell  Federal  
CREDIT UNION



SLI





## Skybridge Lift Plan

### Friday 10-2

Distribute traffic control for set up the following morning.

### Saturday 10-3

8am-9am Set traffic control for full closure.

8am-10am Crane to arrive and begin set up on CU property.

10am-12am (1<sup>st</sup> Pick) Rig & set Truss 1 - Span from tower to intermediate columns.

12am-1pm Reset crane in roadway for pick 2 & 3.

1pm- 3pm (2<sup>nd</sup> Pick) Set truss from garage to intermediate columns.

3pm- 5pm (3<sup>rd</sup> Pick) Set center truss between intermediate columns.

5pm- 6pm Take down crane for removal.

6pm- 7pm Remove traffic control.



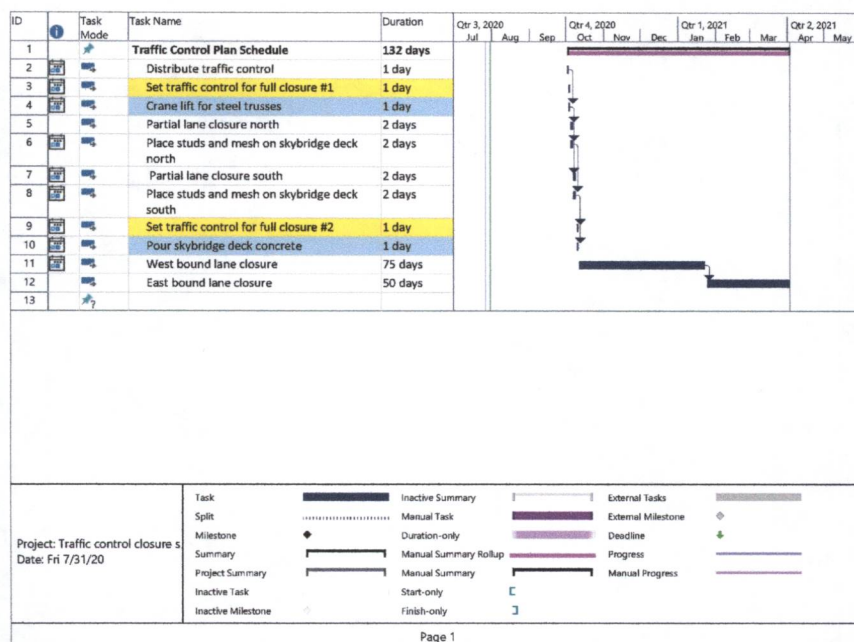




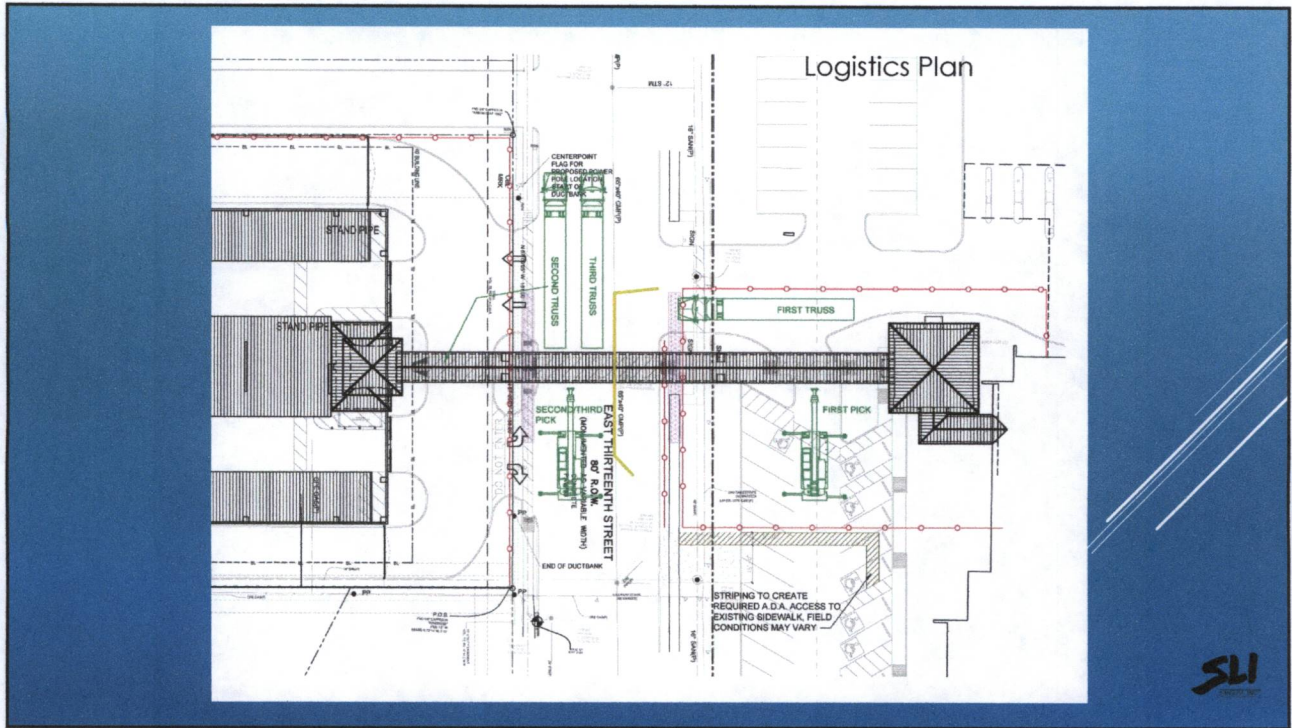
## Proposed Road Closures During Skybridge Construction

Full Closure	10/3 Saturday	Set Skybridge Trusses - Daytime.
Partial Closure	10/5 – 10/6	Prep Deck North Side.
Partial Closure	10/7 – 10/8	Prep Deck South Side.
Full Closure	10/10 Saturday	Pour Deck Concrete - Daytime.
Partial Closure	10/9 – 1/21 +/-	West Bound Lane Closure.
Partial Closure	1/22 – 3/1 +/-	East Bound Lane Closure.

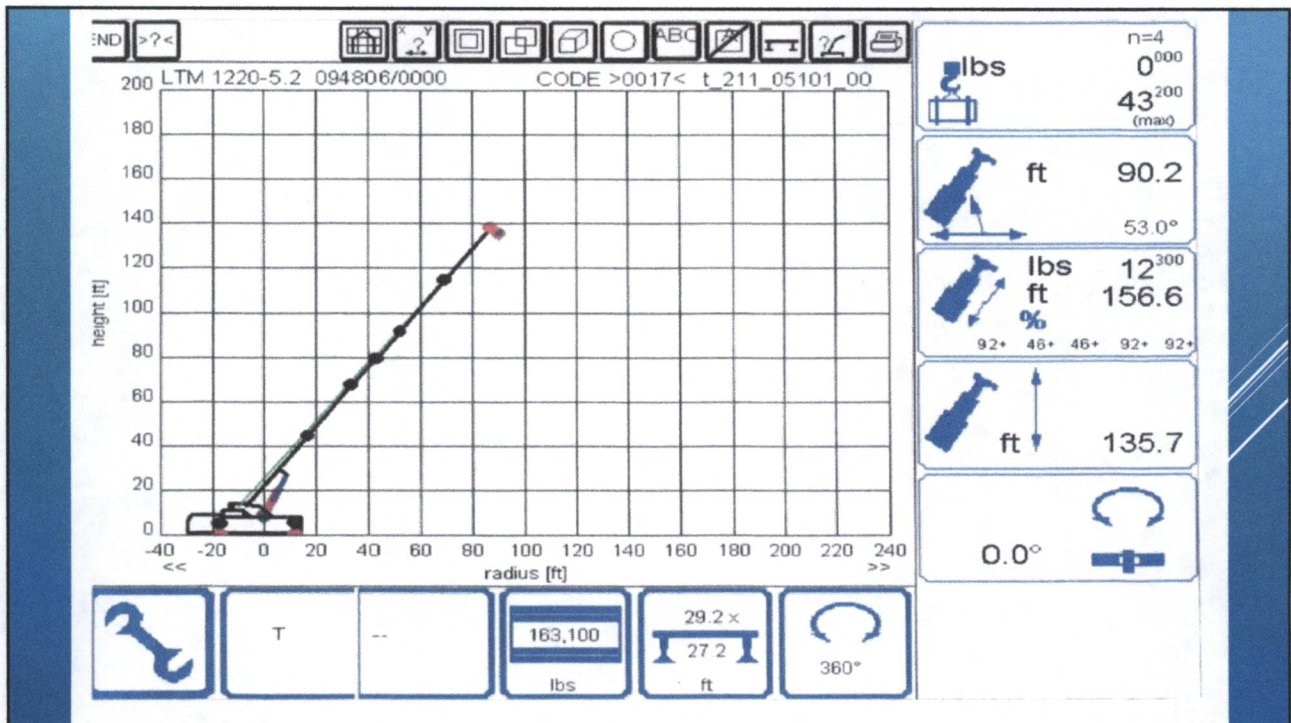
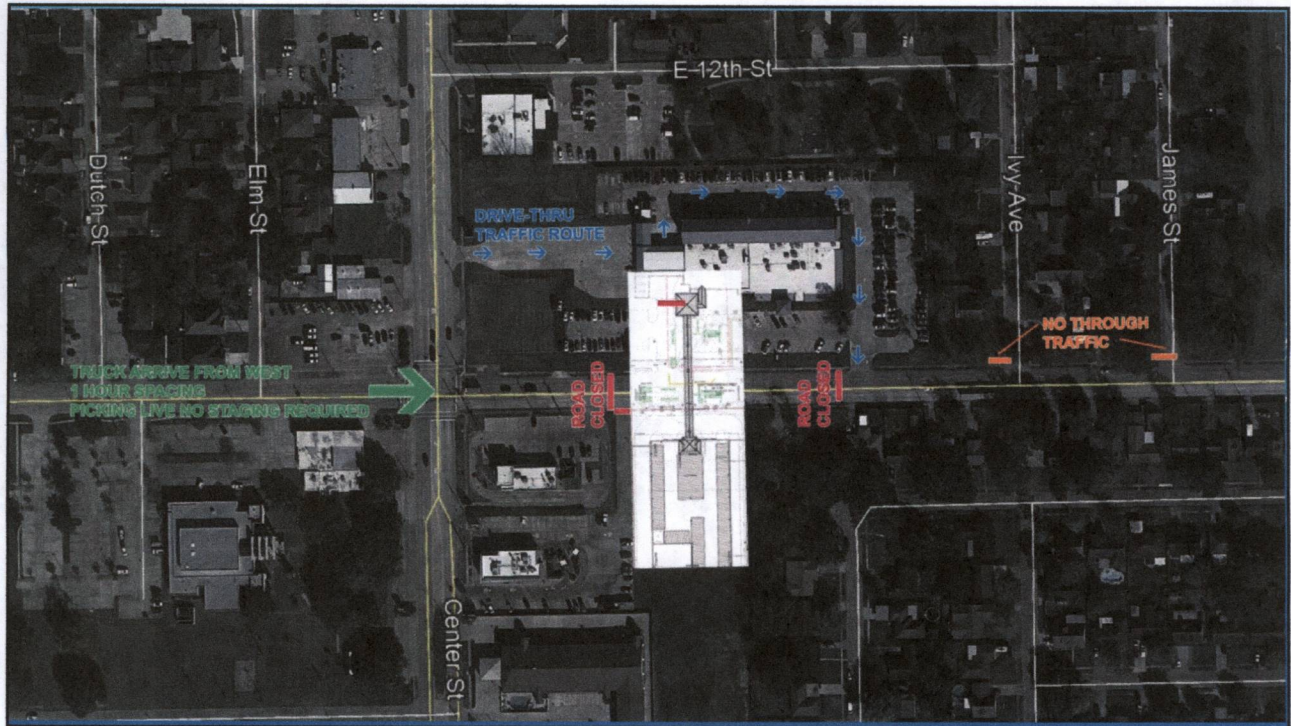
Durations are contingent on weather conditions

















**Shell Federal CREDIT UNION**

# Proposed Detour Plan

**TRAFFIC NOTE**

1. TRAFFIC VOLUME ON E. 15TH ST. AT INTERSECTION WITH E. 1ST ST. IS APPROXIMATELY 1,200 VPH. TRAFFIC VOLUME ON E. 15TH ST. AT INTERSECTION WITH E. 10TH ST. IS APPROXIMATELY 1,200 VPH. TRAFFIC VOLUME ON E. 15TH ST. AT INTERSECTION WITH E. 9TH ST. IS APPROXIMATELY 1,200 VPH. TRAFFIC VOLUME ON E. 15TH ST. AT INTERSECTION WITH E. 8TH ST. IS APPROXIMATELY 1,200 VPH. TRAFFIC VOLUME ON E. 15TH ST. AT INTERSECTION WITH E. 7TH ST. IS APPROXIMATELY 1,200 VPH. TRAFFIC VOLUME ON E. 15TH ST. AT INTERSECTION WITH E. 6TH ST. IS APPROXIMATELY 1,200 VPH. TRAFFIC VOLUME ON E. 15TH ST. AT INTERSECTION WITH E. 5TH ST. IS APPROXIMATELY 1,200 VPH. TRAFFIC VOLUME ON E. 15TH ST. AT INTERSECTION WITH E. 4TH ST. IS APPROXIMATELY 1,200 VPH. TRAFFIC VOLUME ON E. 15TH ST. AT INTERSECTION WITH E. 3TH ST. IS APPROXIMATELY 1,200 VPH. TRAFFIC VOLUME ON E. 15TH ST. AT INTERSECTION WITH E. 2TH ST. IS APPROXIMATELY 1,200 VPH. TRAFFIC VOLUME ON E. 15TH ST. AT INTERSECTION WITH E. 1ST ST. IS APPROXIMATELY 1,200 VPH.

STATION	LANE WIDTH	TRAFFIC VOLUME
0+00 TO 0+50	36' 0"	1,200
0+50 TO 1+00	36' 0"	1,200
1+00 TO 1+50	36' 0"	1,200
1+50 TO 2+00	36' 0"	1,200
2+00 TO 2+50	36' 0"	1,200
2+50 TO 3+00	36' 0"	1,200
3+00 TO 3+50	36' 0"	1,200
3+50 TO 4+00	36' 0"	1,200
4+00 TO 4+50	36' 0"	1,200
4+50 TO 5+00	36' 0"	1,200
5+00 TO 5+50	36' 0"	1,200
5+50 TO 6+00	36' 0"	1,200
6+00 TO 6+50	36' 0"	1,200
6+50 TO 7+00	36' 0"	1,200
7+00 TO 7+50	36' 0"	1,200
7+50 TO 8+00	36' 0"	1,200
8+00 TO 8+50	36' 0"	1,200
8+50 TO 9+00	36' 0"	1,200
9+00 TO 9+50	36' 0"	1,200
9+50 TO 10+00	36' 0"	1,200

**WD Engineering**

**Shell Federal CREDIT UNION**

**DETOUR PLAN**

**C1.09**